

Converting Colors

CIELCh(56, 69.309, 13.492)

Have a look what the booklet for
CIELCh(56, 69.309, 13.492) contains.

CIELCh(56, 69.265, 13.203)	3
<i>Conversions</i>	4
<i>Details</i>	6
<i>Harmonies</i>	11
<i>Previews</i>	20
<i>Color Blindness Simulation</i>	23
<i>CSS Examples</i>	26

Color

CIELCh(56, 69.265, 13.203)

Conversions

Conversions Part 1

Format	Color
Hex	F0446E
RGB	240, 68, 110
RGB Percent	94%, 27%, 43%
CMY	0.0572, 0.7317, 0.5674
CMYK	0.00, 0.72, 0.54, 0.06
HSL	345°, 85%, 61%
HSV	345°, 72%, 94%
XYZ	40.9960, 23.9124, 17.2969
YIQ	124.2160, 89.0300, 49.5260

Conversions

Conversions Part 2

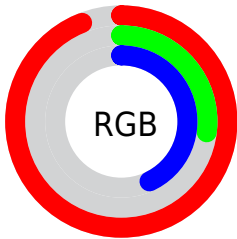
Format	Color
R_{YB}	240, 68, 110
Decimal	15746158
CIE _{Lab}	56.00, 67.43, 15.82
CIE _{LCh}	56, 69.265, 13.203
Yxy	23.9124, 0.4987, 0.2909
Android (android.graphics.Color)	4293936238 (0xFFFF0446E)
YUV	124.2160, -7.0085, 101.5426
Hunter-Lab	48.9003, 64.0715, 13.2583

Details

The CIELCh color **56, 69.265, 13.203** is a dark color, and the websafe version is hex **FF3366**. The color can be described as middle washed rose. A complement of this color would be **86, 53.421, 171.605**, and the grayscale version is **52, 0.007, 296.813**.

A 20% lighter version of the original color is **69, 51.752, 5.748**, and **38, 65.475, 15.937** is the 20% darker color. If you saturate the color by 10%, you get **53, 76.651, 17.342**, and if you desaturate by 10%, it is **60, 60.586, 9.918**.

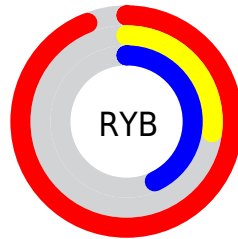
Distribution



Red (94%)

Green (27%)

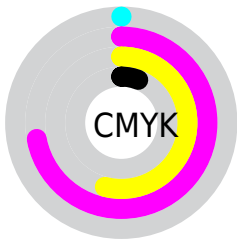
Blue (43%)



Red (94%)

Yellow (27%)

Blue (43%)

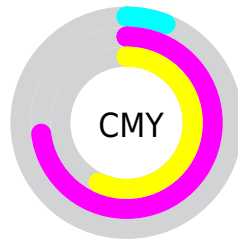


Cyan (0%)

Magenta (72%)

Yellow (54%)

Black (6%)



Cyan (6%)

Magenta (73%)

Yellow (57%)

Brightness & Saturation Gradients

These gradients show how the CIELCh color 56, 69.265, 13.203 changes by changing the brightness by 10 percent. The first figure shows a shift by +10% for each color and the second figure -10%.

Similar to the brightness gradients but the following saturation gradients show a change of the CIELCh color 56, 69.265, 13.203 by changing the saturation by 10% instead.

■ 56, 69.265, 13.203

■ 56, 69.265, 13.203

■ 100, 69.265,
13.203

■ 46, 69.265, 13.203

■ 76, 69.265, 13.203

■ 36, 69.265, 13.203

■ 86, 69.265, 13.203

■ 26, 69.265, 13.203

■ 96, 69.265, 13.203

■ 16, 69.265, 13.203

■ 6, 69.265, 13.203

■ 0, 69.265, 13.203

■ 56, 69.265, 13.203

■ 56, 69.265, 13.203

■ 53, 76.651, 17.342

■ 60, 60.586, 9.918

■ 51, 82.697, 22.367

■ 64, 50.966, 7.328

51, 87.132, 27.031

70, 40.836, 5.271

75, 30.584, 3.607

81, 20.492, 2.231

88, 10.734, 1.057

94, 1.402, 359.721

99, 5.026, 199.219

Harmonies

Complementary

The Complementary color scheme is a pair of colors which are on the opposite of each other on the color wheel.



56, 69.265, 13.203



86, 53.421, 171.605

Rectangle

The Rectangle color scheme consists of four colors that form a rectangle on the color wheel.



56, 69.265, 13.203



56, 69.265, 63.203



56, 69.265, 193.203



56, 69.265, 243.203

Sweetspot

The Sweet Spot groups the original color and five complimentary colors.



56, 69.261, 13.205



86, 20.935, 2.172



54, 96.962, 319.799



44, 14.252, 2.526



0, 0.000, 0.000



53, 0.007, 296.813

Same Dimension

The Same Dimension uses a secret algorithm to generate beautiful new colors.



56, 69.261, 13.205



55, 83.304, 19.615



62, 66.389, 45.018



47, 5.247, 0.830



38, 70.630, 25.977



8, 28.886, 13.457

Inverse Universe

The Inverse Universe completely reimagines the original color for something new.



56, 69.261, 13.205



55, 83.304, 19.615



75, 38.023, 235.703



47, 5.247, 0.830



38, 70.630, 25.977



8, 28.886, 13.457

Previews

White Background



This preview shows how the CIELCh color 56, 69.265, 13.203 looks on a white background.

Color Contrast Check

Large Text (above 18pt) WCAG AA ✓ Pass

Any Text WCAG AA ✗ Fail

Large Text (above 18pt) WCAG AAA ✗ Fail

Any Text WCAG AAA ✗ Fail

Black Background



This preview shows how the CIELCh color 56, 69.265, 13.203 looks on a black background.

Color Contrast Check

Large Text (above 18pt) WCAG AA ✓ Pass

Any Text WCAG AA ✓ Pass

Large Text (above 18pt) WCAG AAA ✓ Pass

Any Text WCAG AAA × Fail

If you want to check with other color combinations, try the [Color Contrast Checker](#).

CIELCh 56, 69.265, 13.203

Background



This preview shows how black text looks on a background with the CIELCh color 56, 69.265, 13.203.



This preview shows how white text looks on a background with the CIELCh color 56, 69.265, 13.203.

Color Blindness Simulation

Color vision deficiency is a very complex topic, and I could not describe the different causes any better than Wikipedia does, so if you want to learn more, you should check out their [article about color blindness](#).

Dichromacy



Original Color

56, 69.265, 13.203

Protanopia

56, 5.154, 290.799

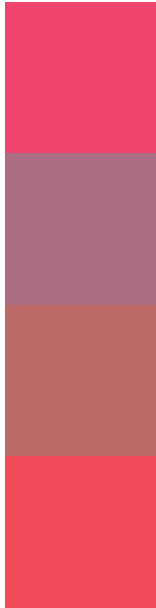
Deuteranopia

56, 20.141, 69.243



Tritanopia
56, 71.405, 28.577

Trichromacy



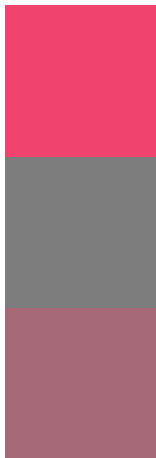
Original Color
56, 69.265, 13.203

Protanomaly
54, 27.978, 357.802

Deuteranomaly
54, 35.434, 25.546

Tritanomaly
56, 70.158, 23.464

Monochromacy



Original Color
56, 69.265, 13.203

Achromatopsia
52, 0.007, 296.813

Achromatomaly
51, 27.490, 3.681

CSS Examples

Text

The CSS property to change the color of the text to CIELCh 56, 69.265, 13.203 is called "color". The color property can be set on classes, ids or directly on the HTML element.

This example shows how text in the color `rgb(240, 68, 110)` looks like.

```
.text, #text, p{  
    color:rgb(240, 68, 110)  
}
```

If you want to add a text shadow in that color use the text-shadow property, you can generate a text shadow directly with our [CSS Text Shadow Generator](#).

Here you see how black text with a 4 pixel rgb(240, 68, 110) colored shadow looks like.

```
.shadow{ text-shadow: 4px 4px 2px rgb(240, 68, 110) }
```

Border

The CSS property to change the border of an element to CIELCh 56, 69.265, 13.203 is called "border". The border property can be set on classes, ids or directly on the HTML element.

This example shows the color as border, it can be applied via the CSS property "border" or "border-color".

```
.border, #border, table{ border:4px solid rgb(240, 68, 110) }
```

If only the border color should be changed use the property `border-color`.

```
.border{ border-color:rgb(240, 68, 110) }
```

If you want to add a box shadow in that color use:

Here you see how a box with a 4 pixel `rgb(240, 68, 110)` colored shadow looks like.

```
.boxshadow{ -moz-box-shadow:4px 4px 4px  
4px rgb(240, 68, 110); -webkit-box-  
shadow:4px 4px 4px 4px rgb(240, 68, 110);  
box-shadow:4px 4px 4px 4px rgb(240, 68,  
110) }
```

Background

The CSS property to change the background color of an element to CIELCh 56, 69.265, 13.203 is called "background". The background property can be set on classes, ids or directly on the HTML element.

```
.background, #background, body{  
background: rgb(240, 68, 110) }
```

If only the background color should be changed can be used:

```
.background{ background-color: rgb(240, 68,  
110) }
```

This example shows the color as background, it is applied via the CSS property "background".

To optimize and compress your CSS code, you can use our [online CSS compressor and optimizer](#) based on csstidy. If you want to create a linear or radial gradient as background or border, check our [CSS Gradient Generator](#).

Hey! You found this booklet interesting? Support Converting Colors with the new Membership Option!

The pro membership hides all ads, plus gives you double the colors in the color bucket, and more awesome pro features!

[Learn more, Memberships starting at \\$2.50/m!](#)

**Follow me
on Twitter!**

@ConvertingColor