

Converting Colors

CIELCh(56, 69.686, 17.963)

Have a look what the booklet for
CIELCh(56, 69.686, 17.963) contains.

CIELCh(56, 69.802, 17.939)	3
<i>Conversions</i>	4
<i>Details</i>	6
<i>Harmonies</i>	11
<i>Previews</i>	20
<i>Color Blindness Simulation</i>	23
<i>CSS Examples</i>	26

Color

CIELCh(56, 69.802, 17.939)

Conversions

Conversions Part 1

Format	Color
Hex	F14665
RGB	241, 70, 101
RGB Percent	95%, 27%, 40%
CMY	0.0563, 0.7268, 0.6050
CMYK	0.00, 0.71, 0.58, 0.06
HSL	349°, 86%, 61%
HSV	349°, 71%, 94%
XYZ	40.6630, 23.9124, 14.7164
YIQ	124.6630, 91.9650, 45.8930

Conversions

Conversions Part 2

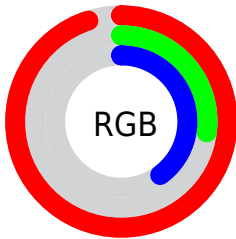
Format	Color
R_{YB}	241, 70, 101
Decimal	15812197
CIE _{Lab}	56.00, 66.41, 21.50
CIE _{LCh}	56, 69.802, 17.939
Yxy	23.9124, 0.5128, 0.3016
Android (android.graphics.Color)	4294002277 (0xFFFF14665)
YUV	124.6630, -11.6659, 102.0275
Hunter-Lab	48.9003, 62.8560, 16.3871

Details

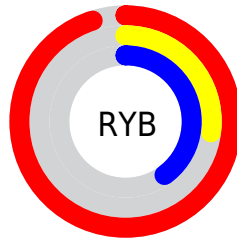
The CIELCh color **56, 69.802, 17.939** is a dark color, and the websafe version is hex **FF3366**. The color can be described as middle washed rose. A complement of this color would be **86, 50.143, 177.109**, and the grayscale version is **52, 0.007, 296.813**.

A 20% lighter version of the original color is **69, 51.057, 11.525**, and **37, 66.619, 20.126** is the 20% darker color. If you saturate the color by 10%, you get **53, 78.103, 22.127**, and if you desaturate by 10%, it is **60, 60.453, 14.582**.

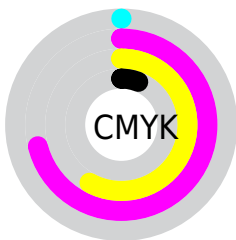
Distribution



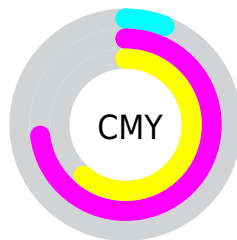
- Red (95%)
- Green (27%)
- Blue (40%)



- Red (95%)
- Yellow (27%)
- Blue (40%)



- Cyan (0%)
- Magenta (71%)
- Yellow (58%)
- Black (6%)



- Cyan (6%)
- Magenta (73%)
- Yellow (61%)


Brightness & Saturation Gradients

These gradients show how the CIELCh color 56, 69.802, 17.939 changes by changing the brightness by 10 percent. The first figure shows a shift by +10% for each color and the second figure -10%.

Similar to the brightness gradients but the following saturation gradients show a change of the CIELCh color 56, 69.802, 17.939 by changing the saturation by 10% instead.

 56, 69.802, 17.939

 56, 69.802, 17.939

 100, 69.802,
17.939

 46, 69.802, 17.939

 76, 69.802, 17.939

 36, 69.802, 17.939

 86, 69.802, 17.939

 26, 69.802, 17.939

 96, 69.802, 17.939

 16, 69.802, 17.939

 6, 69.802, 17.939

 0, 69.802, 17.939

 56, 69.802, 17.939

 56, 69.802, 17.939

 53, 78.103, 22.127

 60, 60.453, 14.582

 51, 85.249, 27.088

 65, 50.396, 11.933

50, 90.847, 31.749

70, 40.029, 9.841

76, 29.702, 8.166

82, 19.660, 6.798

88, 10.048, 5.643

94, 0.931, 4.116

99, 4.940, 199.226

Harmonies

Complementary

The Complementary color scheme is a pair of colors which are on the opposite of each other on the color wheel.



56, 69.802, 17.939



86, 50.143, 177.109

Rectangle

The Rectangle color scheme consists of four colors that form a rectangle on the color wheel.



56, 69.802, 17.939



56, 69.802, 67.939



56, 69.802, 197.939



56, 69.802, 247.939

Sweetspot

The Sweet Spot groups the original color and five complimentary colors.



56, 69.798, 17.941



86, 20.558, 6.800



56, 96.597, 321.892



44, 14.012, 7.153



0, 0.000, 0.000



53, 0.007, 296.813

Same Dimension

The Same Dimension uses a secret algorithm to generate beautiful new colors.



56, 69.798, 17.941



55, 84.896, 24.136



65, 63.914, 50.106



47, 5.128, 5.473



38, 73.476, 30.769



8, 29.057, 16.362

Inverse Universe

The Inverse Universe completely reimagines the original color for something new.



56, 69.798, 17.941



55, 84.896, 24.136



72, 39.509, 246.884



47, 5.128, 5.473



38, 73.476, 30.769



8, 29.057, 16.362

Previews

White Background



This preview shows how the CIELCh color 56, 69.802, 17.939 looks on a white background.

Color Contrast Check

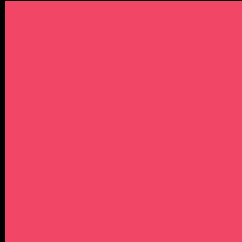
Large Text (above 18pt) WCAG AA ✓ Pass

Any Text WCAG AA ✗ Fail

Large Text (above 18pt) WCAG AAA ✗ Fail

Any Text WCAG AAA ✗ Fail

Black Background



This preview shows how the CIELCh color 56, 69.802, 17.939 looks on a black background.

Color Contrast Check

Large Text (above 18pt) WCAG AA ✓ Pass

Any Text WCAG AA ✓ Pass

Large Text (above 18pt) WCAG AAA ✓ Pass

Any Text WCAG AAA × Fail

If you want to check with other color combinations, try the [Color Contrast Checker](#).

CIELCh 56, 69.802, 17.939

Background



This preview shows how black text looks on a background with the CIELCh color 56, 69.802, 17.939.



This preview shows how white text looks on a background with the CIELCh color 56, 69.802, 17.939.

Color Blindness Simulation

Color vision deficiency is a very complex topic, and I could not describe the different causes any better than Wikipedia does, so if you want to learn more, you should check out their [article about color blindness](#).

Dichromacy



Original Color

56, 69.802, 17.939

Protanopia

56, 2.325, 66.641

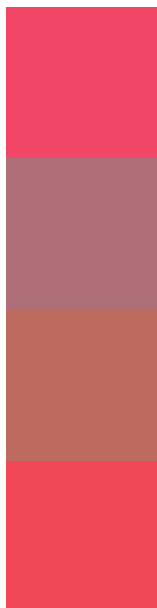
Deuteranopia

56, 25.726, 73.789



Tritanopia
56, 72.264, 28.786

Trichromacy



Original Color
56, 69.802, 17.939

Protanomaly
54, 27.178, 12.048

Deuteranomaly
54, 38.181, 33.782

Tritanomaly
56, 71.129, 24.958

Monochromacy



Original Color
56, 69.802, 17.939

Achromatopsia
52, 0.007, 296.813

Achromatomaly
51, 26.751, 8.127

CSS Examples

Text

The CSS property to change the color of the text to CIELCh 56, 69.802, 17.939 is called "color". The color property can be set on classes, ids or directly on the HTML element.

This example shows how text in the color `rgb(241, 70, 101)` looks like.

```
.text, #text, p{  
    color:rgb(241, 70, 101)  
}
```

If you want to add a text shadow in that color use the text-shadow property, you can generate a text shadow directly with our [CSS Text Shadow Generator](#).

Here you see how black text with a 4 pixel rgb(241, 70, 101) colored shadow looks like.

```
.shadow{ text-shadow: 4px 4px 2px rgb(241, 70, 101) }
```

Border

The CSS property to change the border of an element to CIELCh 56, 69.802, 17.939 is called "border". The border property can be set on classes, ids or directly on the HTML element.

This example shows the color as border, it can be applied via the CSS property "border" or "border-color".

```
.border, #border, table{ border:4px solid rgb(241, 70, 101) }
```

If only the border color should be changed use the property `border-color`.

```
.border{ border-color:rgb(241, 70, 101) }
```

If you want to add a box shadow in that color use:

Here you see how a box with a 4 pixel `rgb(241, 70, 101)` colored shadow looks like.

```
.boxshadow{ -moz-box-shadow:4px 4px 4px  
4px rgb(241, 70, 101); -webkit-box-  
shadow:4px 4px 4px 4px rgb(241, 70, 101);  
box-shadow:4px 4px 4px 4px rgb(241, 70,  
101) }
```

Background

The CSS property to change the background color of an element to CIELCh 56, 69.802, 17.939 is called "background". The background property can be set on classes, ids or directly on the HTML element.

```
.background, #background, body{  
background: rgb(241, 70, 101) }
```

If only the background color should be changed can be used:

```
.background{ background-color: rgb(241, 70,  
101) }
```

This example shows the color as background, it is applied via the CSS property "background".

To optimize and compress your CSS code, you can use our [online CSS compressor and optimizer](#) based on csstidy. If you want to create a linear or radial gradient as background or border, check our [CSS Gradient Generator](#).

Hey! You found this booklet interesting? Support Converting Colors with the new Membership Option!

The pro membership hides all ads, plus gives you double the colors in the color bucket, and more awesome pro features!

[Learn more, Memberships starting at \\$2.50/m!](#)

**Follow me
on Twitter!**

@ConvertingColor