

Converting Colors

CIELCh(56, 73.255, 4.457)

Have a look what the booklet for
CIELCh(56, 73.255, 4.457) contains.

CIELCh(56, 73.249, 4.122)	3
<i>Conversions</i>	4
<i>Details</i>	6
<i>Harmonies</i>	11
<i>Previews</i>	20
<i>Color Blindness Simulation</i>	23
<i>CSS Examples</i>	26

Color

CIELCh(56, 73.249, 4.122)

Conversions

Conversions Part 1

Format	Color
Hex	F43A80
RGB	244, 58, 128
RGB Percent	96%, 23%, 50%
CMY	0.0420, 0.7711, 0.4971
CMYK	0.00, 0.76, 0.48, 0.04
HSL	337°, 90%, 59%
HSV	337°, 76%, 96%
XYZ	42.8548, 23.9124, 22.8622
YIQ	121.5940, 88.3860, 61.2020

Conversions

Conversions Part 2

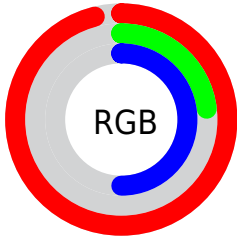
Format	Color
R_{YB}	244, 58, 128
Decimal	16005760
CIE _{Lab}	56.00, 73.06, 5.27
CIE _{LCh}	56, 73.249, 4.122
Yxy	23.9124, 0.4781, 0.2668
Android (android.graphics.Color)	4294195840 (0xFFFF43A80)
YUV	121.5940, 3.1582, 107.3501
Hunter-Lab	48.9003, 70.8566, 6.5106

Details

The CIELCh color **56, 73.249, 4.122** is a dark color, and the websafe version is hex **CC0066**. The color can be described as middle washed rose. A complement of this color would be **86, 64.535, 161.060**, and the grayscale version is **51, 0.007, 296.813**.

A 20% lighter version of the original color is **68, 57.635, 352.879**, and **39, 65.568, 8.299** is the 20% darker color. If you saturate the color by 10%, you get **54, 78.367, 8.081**, and if you desaturate by 10%, it is **59, 66.195, 1.008**.

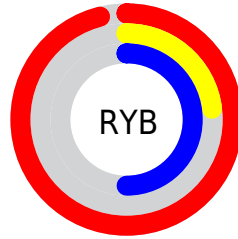
Distribution



Red (96%)

Green (23%)

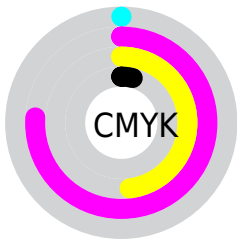
Blue (50%)



Red (96%)

Yellow (23%)

Blue (50%)

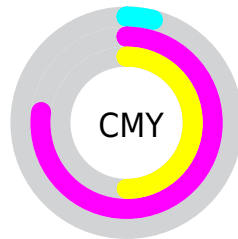


Cyan (0%)

Magenta (76%)

Yellow (48%)

Black (4%)



Cyan (4%)

Magenta (77%)

Yellow (50%)

Brightness & Saturation Gradients

These gradients show how the CIELCh color 56, 73.249, 4.122 changes by changing the brightness by 10 percent. The first figure shows a shift by +10% for each color and the second figure -10%.

Similar to the brightness gradients but the following saturation gradients show a change of the CIELCh color 56, 73.249, 4.122 by changing the saturation by 10% instead.

 56, 73.249, 4.122  56, 73.249, 4.122

 100, 73.249, 4.122  46, 73.249, 4.122

 76, 73.249, 4.122  36, 73.249, 4.122

 86, 73.249, 4.122  26, 73.249, 4.122

 96, 73.249, 4.122  16, 73.249, 4.122

 6, 73.249, 4.122

 0, 73.249, 4.122

 56, 73.249, 4.122  56, 73.249, 4.122

 54, 78.367, 8.081  59, 66.195, 1.008

 52, 81.678, 12.994  64, 57.532,

■ 52, 82.774, 15.053

358.551

■ 69, 47.763,
356.585

■ 74, 37.392,
354.974

■ 80, 26.821,
353.621

■ 86, 16.330,
352.456

■ 92, 6.095, 351.397

■ 99, 3.792, 170.731

■ 99, 3.697, 199.350

Harmonies

Complementary

The Complementary color scheme is a pair of colors which are on the opposite of each other on the color wheel.



56, 73.249, 4.122



86, 64.535, 161.060

Rectangle

The Rectangle color scheme consists of four colors that form a rectangle on the color wheel.



56, 73.249, 4.122



56, 73.249, 54.122



56, 73.249, 184.122



56, 73.249, 234.122

Sweetspot

The Sweet Spot groups the original color and five complimentary colors.



56, 73.245, 4.124



85, 24.371, 353.248



50, 103.243, 315.770



43, 16.940, 353.692



0, 0.000, 0.000



53, 0.007, 296.813

Same Dimension

The Same Dimension uses a secret algorithm to generate beautiful new colors.



56, 73.245, 4.124



55, 82.899, 10.465



57, 77.634, 37.534



48, 5.708, 351.753



39, 67.303, 14.037



9, 29.625, 5.891

Inverse Universe

The Inverse Universe completely reimagines the original color for something new.



56, 73.245, 4.124



55, 82.899, 10.465



82, 40.534, 213.629



48, 5.708, 351.753



39, 67.303, 14.037



9, 29.625, 5.891

Previews

White Background



This preview shows how the CIELCh color 56, 73.249, 4.122 looks on a white background.

Color Contrast Check

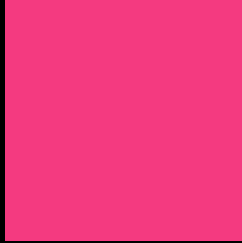
Large Text (above 18pt) WCAG AA ✓ Pass

Any Text WCAG AA ✗ Fail

Large Text (above 18pt) WCAG AAA ✗ Fail

Any Text WCAG AAA ✗ Fail

Black Background



This preview shows how the CIELCh color 56, 73.249, 4.122 looks on a black background.

Color Contrast Check

Large Text (above 18pt) WCAG AA ✓ Pass

Any Text WCAG AA ✓ Pass

Large Text (above 18pt) WCAG AAA ✓ Pass

Any Text WCAG AAA × Fail

If you want to check with other color combinations, try the [Color Contrast Checker](#).

CIELCh 56, 73.249, 4.122

Background



This preview shows how black text looks on a background with the CIELCh color 56, 73.249, 4.122.

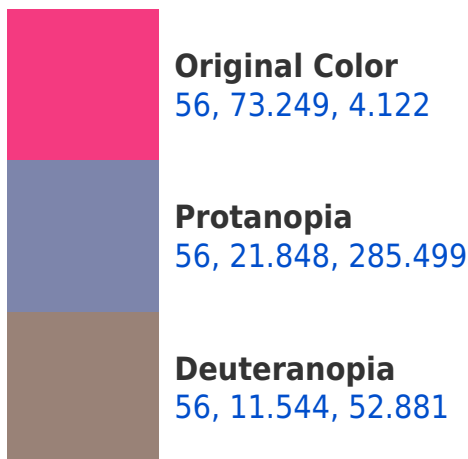


This preview shows how white text looks on a background with the CIELCh color 56, 73.249, 4.122.

Color Blindness Simulation

Color vision deficiency is a very complex topic, and I could not describe the different causes any better than Wikipedia does, so if you want to learn more, you should check out their [article about color blindness](#).

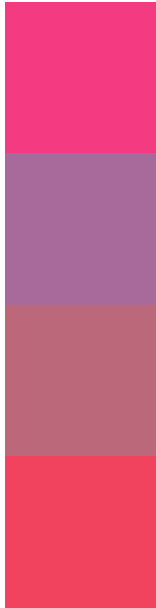
Dichromacy





Tritanopia
56, 73.814, 29.539

Trichromacy



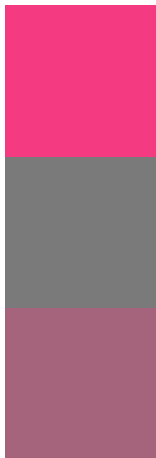
Original Color
56, 73.249, 4.122

Protanomaly
53, 36.254, 333.257

Deuteranomaly
54, 35.118, 7.425

Tritanomaly
56, 71.853, 20.558

Monochromacy



Original Color
56, 73.249, 4.122

Achromatopsia
51, 0.007, 296.813

Achromatomaly
50, 30.523, 355.646

CSS Examples

Text

The CSS property to change the color of the text to CIELCh 56, 73.249, 4.122 is called "color". The color property can be set on classes, ids or directly on the HTML element.

This example shows how text in the color `rgb(244, 58, 128)` looks like.

```
.text, #text, p{  
    color:rgb(244, 58, 128)  
}
```

If you want to add a text shadow in that color use the text-shadow property, you can generate a text shadow directly with our [CSS Text Shadow Generator](#).

Here you see how black text with a 4 pixel rgb(244, 58, 128) colored shadow looks like.

```
.shadow{ text-shadow: 4px 4px 2px rgb(244, 58, 128) }
```

Border

The CSS property to change the border of an element to CIELCh 56, 73.249, 4.122 is called "border". The border property can be set on classes, ids or directly on the HTML element.

This example shows the color as border, it can be applied via the CSS property "border" or "border-color".

```
.border, #border, table{ border:4px solid rgb(244, 58, 128) }
```

If only the border color should be changed use the property `border-color`.

```
.border{ border-color:rgb(244, 58, 128) }
```

If you want to add a box shadow in that color use:

Here you see how a box with a 4 pixel `rgb(244, 58, 128)` colored shadow looks like.

```
.boxshadow{ -moz-box-shadow:4px 4px 4px  
4px rgb(244, 58, 128); -webkit-box-  
shadow:4px 4px 4px 4px rgb(244, 58, 128);  
box-shadow:4px 4px 4px 4px rgb(244, 58,  
128) }
```

Background

The CSS property to change the background color of an element to CIELCh 56, 73.249, 4.122 is called "background". The background property can be set on classes, ids or directly on the HTML element.

```
.background, #background, body{  
background: rgb(244, 58, 128) }
```

If only the background color should be changed can be used:

```
.background{ background-color: rgb(244, 58,  
128) }
```

This example shows the color as background, it is applied via the CSS property "background".

To optimize and compress your CSS code, you can use our [online CSS compressor and optimizer](#) based on csstidy. If you want to create a linear or radial gradient as background or border, check our [CSS Gradient Generator](#).

Hey! You found this booklet interesting? Support Converting Colors with the new Membership Option!

The pro membership hides all ads, plus gives you double the colors in the color bucket, and more awesome pro features!

[Learn more, Memberships starting at \\$2.50/m!](#)

**Follow me
on Twitter!**

@ConvertingColor