

Converting Colors

CIELCh(56, 76.840, 15.308)

Have a look what the booklet for
CIELCh(56, 76.840, 15.308) contains.

CIELCh(56, 76.942, 15.349)	3
<i>Conversions</i>	4
<i>Details</i>	6
<i>Harmonies</i>	11
<i>Previews</i>	20
<i>Color Blindness Simulation</i>	23
<i>CSS Examples</i>	26

Color

CIELCh(56, 76.942, 15.349)

Conversions

Conversions Part 1

Format	Color
Hex	FA3567
RGB	250, 53, 103
RGB Percent	98%, 21%, 40%
CMY	0.0188, 0.7911, 0.5955
CMYK	0.00, 0.79, 0.59, 0.02
HSL	345°, 95%, 60%
HSV	345°, 79%, 98%
XYZ	43.2376, 23.9124, 15.2092
YIQ	117.6030, 101.3620, 57.3140

Conversions

Conversions Part 2

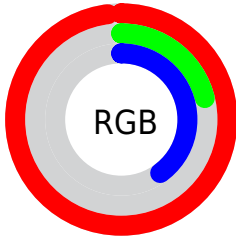
Format	Color
R_{YB}	250, 53, 103
Decimal	16397671
CIE _{Lab}	56.00, 74.20, 20.37
CIE _{LCh}	56, 76.942, 15.349
Yxy	23.9124, 0.5250, 0.2903
Android (android.graphics.Color)	4294587751 (0xFFFA3567)
YUV	117.6030, -7.1993, 116.1122
Hunter-Lab	48.9003, 72.2537, 15.7896

Details

The CIELCh color **56, 76.942, 15.349** is a dark color, and the websafe version is hex **FF3366**. The color can be described as middle washed rose. A complement of this color would be **89, 58.990, 169.552**, and the grayscale version is **50, 0.007, 296.813**.

A 20% lighter version of the original color is **67, 55.825, 6.427**, and **39, 68.979, 20.556** is the 20% darker color. If you saturate the color by 10%, you get **54, 83.375, 20.142**, and if you desaturate by 10%, it is **59, 69.049, 11.471**.

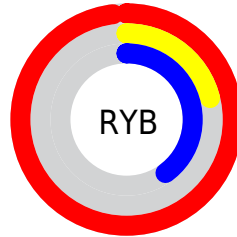
Distribution



Red (98%)

Green (21%)

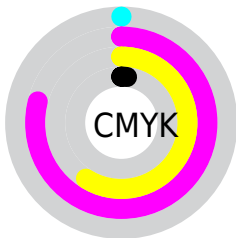
Blue (40%)



Red (98%)

Yellow (21%)

Blue (40%)

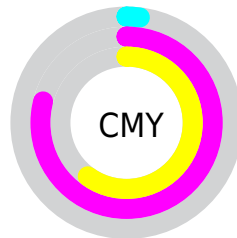


Cyan (0%)

Magenta (79%)

Yellow (59%)

Black (2%)



Cyan (2%)

Magenta (79%)

Yellow (60%)


Brightness & Saturation Gradients

These gradients show how the CIELCh color 56, 76.942, 15.349 changes by changing the brightness by 10 percent. The first figure shows a shift by +10% for each color and the second figure -10%.

Similar to the brightness gradients but the following saturation gradients show a change of the CIELCh color 56, 76.942, 15.349 by changing the saturation by 10% instead.

 56, 76.942, 15.349

 56, 76.942, 15.349

 100, 76.942,
15.349

 46, 76.942, 15.349

 76, 76.942, 15.349

 36, 76.942, 15.349

 86, 76.942, 15.349

 26, 76.942, 15.349

 96, 76.942, 15.349

 16, 76.942, 15.349

 6, 76.942, 15.349

 0, 76.942, 15.349

 56, 76.942, 15.349

 56, 76.942, 15.349

 54, 83.375, 20.142

 59, 69.049, 11.471

 53, 88.669, 25.662

 63, 59.864, 8.406

53, 89.354, 26.359

68, 49.788, 5.989

74, 39.275, 4.059

80, 28.706, 2.488

86, 18.345, 1.177

93, 8.352, 0.039

99, 1.197, 179.650

100, 1.665,
199.698

Harmonies

Complementary

The Complementary color scheme is a pair of colors which are on the opposite of each other on the color wheel.



56, 76.942, 15.349



89, 58.990, 169.552

Rectangle

The Rectangle color scheme consists of four colors that form a rectangle on the color wheel.



56, 76.942, 15.349



56, 76.942, 65.349



56, 76.942, 195.349



56, 76.942, 245.349

Sweetspot

The Sweet Spot groups the original color and five complimentary colors.



56, 76.938, 15.351



84, 24.154, 1.846



53, 106.786, 319.229



43, 16.705, 2.329



0, 0.000, 0.000



53, 0.007, 296.813

Same Dimension

The Same Dimension uses a secret algorithm to generate beautiful new colors.



56, 76.938, 15.351



54, 87.558, 23.064



61, 77.459, 44.282



49, 5.453, 0.125



40, 71.731, 25.284



9, 30.745, 14.939

Inverse Universe

The Inverse Universe completely reimagines the original color for something new.



56, 76.938, 15.351



54, 87.558, 23.064



77, 40.911, 235.061



49, 5.453, 0.125



40, 71.731, 25.284



9, 30.745, 14.939

Previews

White Background



This preview shows how the CIELCh color 56, 76.942, 15.349 looks on a white background.

Color Contrast Check

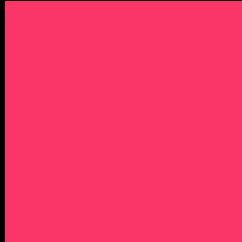
Large Text (above 18pt) WCAG AA ✓ Pass

Any Text WCAG AA ✗ Fail

Large Text (above 18pt) WCAG AAA ✗ Fail

Any Text WCAG AAA ✗ Fail

Black Background



This preview shows how the CIELCh color 56, 76.942, 15.349 looks on a black background.

Color Contrast Check

Large Text (above 18pt) WCAG AA ✓ Pass

Any Text WCAG AA ✓ Pass

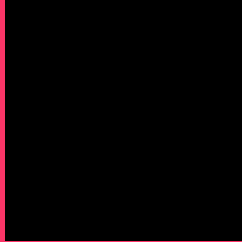
Large Text (above 18pt) WCAG AAA ✓ Pass

Any Text WCAG AAA × Fail

If you want to check with other color combinations, try the [Color Contrast Checker](#).

CIELCh 56, 76.942, 15.349

Background



This preview shows how black text looks on a background with the CIELCh color 56, 76.942, 15.349.



This preview shows how white text looks on a background with the CIELCh color 56, 76.942, 15.349.

Color Blindness Simulation

Color vision deficiency is a very complex topic, and I could not describe the different causes any better than Wikipedia does, so if you want to learn more, you should check out their [article about color blindness](#).

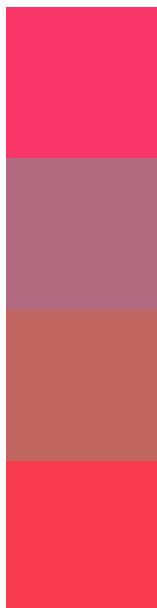
Dichromacy





Tritanopia
56, 81.708, 31.797

Trichromacy



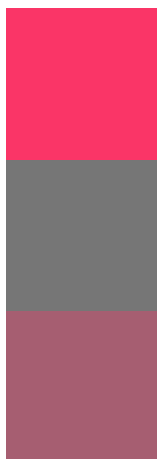
Original Color
56, 76.942, 15.349

Protanomaly
53, 31.627, 0.445

Deuteranomaly
54, 40.958, 27.673

Tritanomaly
56, 79.081, 26.257

Monochromacy



Original Color
56, 76.942, 15.349

Achromatopsia
50, 0.007, 296.813

Achromatomaly
49, 31.705, 3.912

CSS Examples

Text

The CSS property to change the color of the text to CIELCh 56, 76.942, 15.349 is called "color". The color property can be set on classes, ids or directly on the HTML element.

This example shows how text in the color `rgb(250, 53, 103)` looks like.

```
.text, #text, p{  
    color:rgb(250, 53, 103)  
}
```

If you want to add a text shadow in that color use the text-shadow property, you can generate a text shadow directly with our [CSS Text Shadow Generator](#).

Here you see how black text with a 4 pixel rgb(250, 53, 103) colored shadow looks like.

```
.shadow{ text-shadow: 4px 4px 2px rgb(250, 53, 103) }
```

Border

The CSS property to change the border of an element to CIELCh 56, 76.942, 15.349 is called "border". The border property can be set on classes, ids or directly on the HTML element.

This example shows the color as border, it can be applied via the CSS property "border" or "border-color".

```
.border, #border, table{ border:4px solid rgb(250, 53, 103) }
```

If only the border color should be changed use the property border-color.

```
.border{ border-color:rgb(250, 53, 103) }
```

If you want to add a box shadow in that color use:

Here you see how a box with a 4 pixel rgb(250, 53, 103) colored shadow looks like.

```
.boxshadow{ -moz-box-shadow:4px 4px 4px  
4px rgb(250, 53, 103); -webkit-box-  
shadow:4px 4px 4px 4px rgb(250, 53, 103);  
box-shadow:4px 4px 4px 4px rgb(250, 53,  
103) }
```

Background

The CSS property to change the background color of an element to CIELCh 56, 76.942, 15.349 is called "background". The background property can be set on classes, ids or directly on the HTML element.

```
.background, #background, body{  
background: rgb(250, 53, 103) }
```

If only the background color should be changed can be used:

```
.background{ background-color: rgb(250, 53,  
103) }
```

This example shows the color as background, it is applied via the CSS property "background".

To optimize and compress your CSS code, you can use our [online CSS compressor and optimizer](#) based on csstidy. If you want to create a linear or radial gradient as background or border, check our [CSS Gradient Generator](#).

Hey! You found this booklet interesting? Support Converting Colors with the new Membership Option!

The pro membership hides all ads, plus gives you double the colors in the color bucket, and more awesome pro features!

[Learn more, Memberships starting at \\$2.50/m!](#)

**Follow me
on Twitter!**

@ConvertingColor