

Converting Colors

CIELCh(56, 80.082, 7.732)

Have a look what the booklet for
CIELCh(56, 80.082, 7.732) contains.

CIELCh(56, 79.973, 7.930)	3
<i>Conversions</i>	4
<i>Details</i>	6
<i>Harmonies</i>	11
<i>Previews</i>	20
<i>Color Blindness Simulation</i>	23
<i>CSS Examples</i>	26

Color

CIELCh(56, 79.973, 7.930)

Conversions

Conversions Part 1

Format	Color
Hex	FE2877
RGB	254, 40, 119
RGB Percent	100%, 16%, 47%
CMY	0.0040, 0.8432, 0.5334
CMYK	0.00, 0.84, 0.53, 0.00
HSL	338°, 99%, 58%
HSV	338°, 84%, 100%
XYZ	44.9499, 23.9124, 19.6930
YIQ	112.9920, 102.1850, 69.9370

Conversions

Conversions Part 2

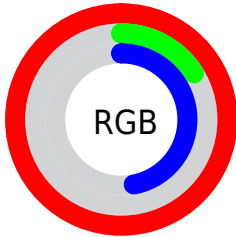
Format	Color
R_{YB}	254, 40, 119
Decimal	16656503
CIE _{Lab}	56.00, 79.21, 11.03
CIE _{LCh}	56, 79.973, 7.930
Yxy	23.9124, 0.5076, 0.2700
Android (android.graphics.Color)	4294846583 (0xFFFE2877)
YUV	112.9920, 2.9619, 123.6640
Hunter-Lab	48.9003, 78.5041, 10.3532

Details

The CIELCh color **56, 79.973, 7.930** is a dark color, and the websafe version is hex **FF0066**. The color can be described as middle washed rose. A complement of this color would be **89, 70.501, 159.821**, and the grayscale version is **48, 0.006, 296.813**.

A 20% lighter version of the original color is **66, 60.255, 355.959**, and **40, 68.391, 14.330** is the 20% darker color. If you saturate the color by 10%, you get **54, 83.763, 12.740**, and if you desaturate by 10%, it is **59, 74.272, 4.078**.

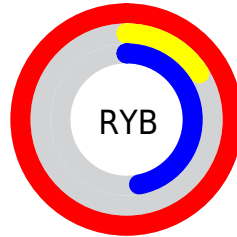
Distribution



Red (100%)

Green (16%)

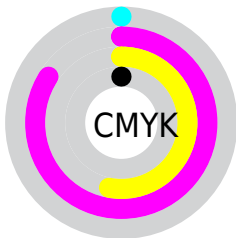
Blue (47%)



Red (100%)

Yellow (16%)

Blue (47%)

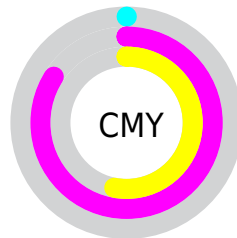


Cyan (0%)

Magenta (84%)

Yellow (53%)

Black (0%)



Cyan (0%)

Magenta (84%)

Yellow (53%)

Brightness & Saturation Gradients

These gradients show how the CIELCh color 56, 79.973, 7.930 changes by changing the brightness by 10 percent. The first figure shows a shift by +10% for each color and the second figure -10%.

Similar to the brightness gradients but the following saturation gradients show a change of the CIELCh color 56, 79.973, 7.930 by changing the saturation by 10% instead.

 56, 79.973, 7.930  56, 79.973, 7.930

 100, 79.973, 7.930  46, 79.973, 7.930

 76, 79.973, 7.930  36, 79.973, 7.930

 86, 79.973, 7.930  26, 79.973, 7.930

 96, 79.973, 7.930  16, 79.973, 7.930

 6, 79.973, 7.930

 0, 79.973, 7.930

 56, 79.973, 7.930  56, 79.973, 7.930

 54, 83.763, 12.740  59, 74.272, 4.078

 54, 85.456, 15.829  62, 66.639, 1.047

67, 57.443,
358.656

72, 47.216,
356.738

78, 36.462,
355.162

84, 25.573,
353.836

90, 14.815,
352.689

97, 4.350, 351.612

100, 0.356,
201.244

Harmonies

Complementary

The Complementary color scheme is a pair of colors which are on the opposite of each other on the color wheel.



56, 79.973, 7.930



89, 70.501, 159.821

Rectangle

The Rectangle color scheme consists of four colors that form a rectangle on the color wheel.



56, 79.973, 7.930



56, 79.973, 57.930



56, 79.973, 187.930



56, 79.973, 237.930

Sweetspot

The Sweet Spot groups the original color and five complimentary colors.



56, 79.969, 7.932



84, 26.466, 353.928



49, 113.694, 315.609



42, 18.127, 354.376



0, 0.000, 0.000



53, 0.007, 296.813

Same Dimension

The Same Dimension uses a secret algorithm to generate beautiful new colors.



56, 79.969, 7.932



54, 85.721, 15.841



57, 89.426, 39.220



50, 5.880, 352.185



41, 68.817, 14.792



10, 31.285, 7.419

Inverse Universe

The Inverse Universe completely reimagines the original color for something new.



56, 79.969, 7.932



54, 85.721, 15.841



84, 43.073, 214.910



50, 5.880, 352.185



41, 68.817, 14.792



10, 31.285, 7.419

Previews

White Background



This preview shows how the CIELCh color 56, 79.973, 7.930 looks on a white background.

Color Contrast Check

Large Text (above 18pt) WCAG AA ✓ Pass

Any Text WCAG AA ✗ Fail

Large Text (above 18pt) WCAG AAA ✗ Fail

Any Text WCAG AAA ✗ Fail

Black Background



This preview shows how the CIELCh color 56, 79.973, 7.930 looks on a black background.

Color Contrast Check

Large Text (above 18pt) WCAG AA ✓ Pass

Any Text WCAG AA ✓ Pass

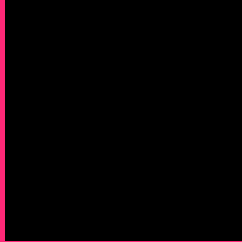
Large Text (above 18pt) WCAG AAA ✓ Pass

Any Text WCAG AAA × Fail

If you want to check with other color combinations, try the [Color Contrast Checker](#).

CIELCh 56, 79.973, 7.930

Background



This preview shows how black text looks on a background with the CIELCh color 56, 79.973, 7.930.



This preview shows how white text looks on a background with the CIELCh color 56, 79.973, 7.930.

Color Blindness Simulation

Color vision deficiency is a very complex topic, and I could not describe the different causes any better than Wikipedia does, so if you want to learn more, you should check out their [article about color blindness](#).

Dichromacy



Original Color
56, 79.973, 7.930

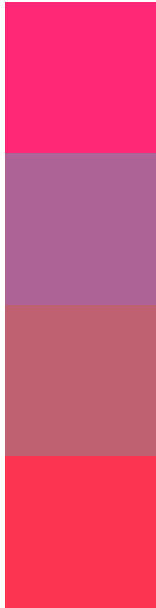
Protanopia
56, 18.958, 286.023

Deuteranopia
56, 16.416, 63.754



Tritanopia
56, 84.235, 32.488

Trichromacy



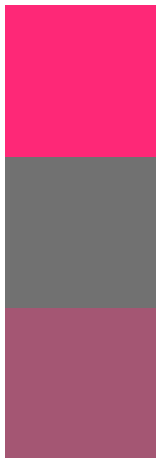
Original Color
56, 79.973, 7.930

Protanomaly
52, 39.610, 338.593

Deuteranomaly
53, 40.582, 12.429

Tritanomaly
56, 81.138, 24.135

Monochromacy



Original Color
56, 79.973, 7.930

Achromatopsia
48, 0.006, 296.813

Achromatomaly
47, 35.570, 356.903

CSS Examples

Text

The CSS property to change the color of the text to CIELCh 56, 79.973, 7.930 is called "color". The color property can be set on classes, ids or directly on the HTML element.

This example shows how text in the color `rgb(254, 40, 119)` looks like.

```
.text, #text, p{  
    color:rgb(254, 40, 119)  
}
```

If you want to add a text shadow in that color use the text-shadow property, you can generate a text shadow directly with our [CSS Text Shadow Generator](#).

Here you see how black text with a 4 pixel rgb(254, 40, 119) colored shadow looks like.

```
.shadow{ text-shadow: 4px 4px 2px rgb(254, 40, 119) }
```

Border

The CSS property to change the border of an element to CIELCh 56, 79.973, 7.930 is called "border". The border property can be set on classes, ids or directly on the HTML element.

This example shows the color as border, it can be applied via the CSS property "border" or "border-color".

```
.border, #border, table{ border:4px solid rgb(254, 40, 119) }
```

If only the border color should be changed use the property border-color.

```
.border{ border-color:rgb(254, 40, 119) }
```

If you want to add a box shadow in that color use:

Here you see how a box with a 4 pixel rgb(254, 40, 119) colored shadow looks like.

```
.boxshadow{ -moz-box-shadow:4px 4px 4px  
4px rgb(254, 40, 119); -webkit-box-  
shadow:4px 4px 4px 4px rgb(254, 40, 119);  
box-shadow:4px 4px 4px 4px rgb(254, 40,  
119) }
```

Background

The CSS property to change the background color of an element to CIELCh 56, 79.973, 7.930 is called "background". The background property can be set on classes, ids or directly on the HTML element.

```
.background, #background, body{  
background: rgb(254, 40, 119) }
```

If only the background color should be changed can be used:

```
.background{ background-color: rgb(254, 40,  
119) }
```

This example shows the color as background, it is applied via the CSS property "background".

To optimize and compress your CSS code, you can use our [online CSS compressor and optimizer](#) based on csstidy. If you want to create a linear or radial gradient as background or border, check our [CSS Gradient Generator](#).

Hey! You found this booklet interesting? Support Converting Colors with the new Membership Option!

The pro membership hides all ads, plus gives you double the colors in the color bucket, and more awesome pro features!

[Learn more, Memberships starting at \\$2.50/m!](#)

**Follow me
on Twitter!**

@ConvertingColor