

Converting Colors

CIELCh(56, 80.508, 13.821)

Have a look what the booklet for
CIELCh(56, 80.508, 13.821) contains.

CIELCh(56, 80.530, 13.978)	3
<i>Conversions</i>	4
<i>Details</i>	6
<i>Harmonies</i>	11
<i>Previews</i>	20
<i>Color Blindness Simulation</i>	23
<i>CSS Examples</i>	26

Color

CIELCh(56, 80.530, 13.978)

Conversions

Conversions Part 1

Format	Color
Hex	FF2A69
RGB	255, 42, 105
RGB Percent	100%, 16%, 41%
CMY	0.0003, 0.8356, 0.5885
CMYK	0.00, 0.84, 0.59, 0.00
HSL	342°, 100%, 58%
HSV	342°, 84%, 100%
XYZ	44.5829, 23.9124, 15.6148
YIQ	112.8690, 106.7250, 64.7490

Conversions

Conversions Part 2

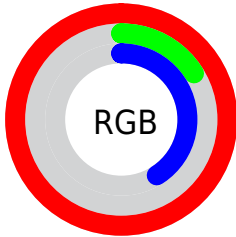
Format	Color
R_{YB}	255, 42, 105
Decimal	16722537
CIE _{Lab}	56.00, 78.15, 19.45
CIE _{LCh}	56, 80.530, 13.978
Yxy	23.9124, 0.5301, 0.2843
Android (android.graphics.Color)	4294912617 (0xFFFF2A69)
YUV	112.8690, -3.8794, 124.6489
Hunter-Lab	48.9003, 77.1647, 15.2979

Details

The CIELCh color **56, 80.530, 13.978** is a dark color, and the websafe version is hex **FF3366**. The color can be described as dark washed rose. A complement of this color would be **90, 64.863, 165.209**, and the grayscale version is **48, 0.006, 296.813**.

A 20% lighter version of the original color is **66, 58.552, 3.600**, and **40, 70.317, 20.449** is the 20% darker color. If you saturate the color by 10%, you get **54, 85.637, 19.101**, and if you desaturate by 10%, it is **59, 73.830, 9.800**.

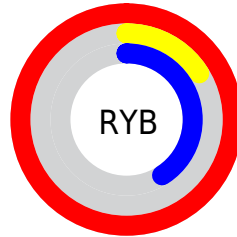
Distribution



Red (100%)

Green (16%)

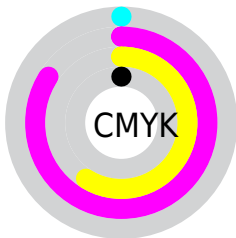
Blue (41%)



Red (100%)

Yellow (16%)

Blue (41%)

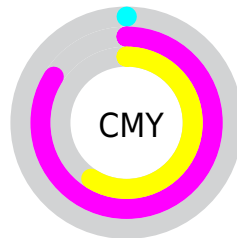


Cyan (0%)

Magenta (84%)

Yellow (59%)

Black (0%)



Cyan (0%)

Magenta (84%)

Yellow (59%)


Brightness & Saturation Gradients

These gradients show how the CIELCh color 56, 80.530, 13.978 changes by changing the brightness by 10 percent. The first figure shows a shift by +10% for each color and the second figure -10%.

Similar to the brightness gradients but the following saturation gradients show a change of the CIELCh color 56, 80.530, 13.978 by changing the saturation by 10% instead.

 56, 80.530, 13.978

 56, 80.530, 13.978

 100, 80.530,
13.978

 46, 80.530, 13.978

 76, 80.530, 13.978

 36, 80.530, 13.978

 86, 80.530, 13.978

 26, 80.530, 13.978

 96, 80.530, 13.978

 16, 80.530, 13.978

 6, 80.530, 13.978

 0, 80.530, 13.978

 56, 80.530, 13.978

 56, 80.530, 13.978

 54, 85.637, 19.101

 59, 73.830, 9.800

 54, 88.463, 22.722

 62, 65.512, 6.492

67, 55.911, 3.889

72, 45.515, 1.817

78, 34.785, 0.136

84, 24.068,
358.739

91, 13.595,
357.546

98, 3.497, 356.411

100, 0.028,
224.073

Harmonies

Complementary

The Complementary color scheme is a pair of colors which are on the opposite of each other on the color wheel.



56, 80.530, 13.978



90, 64.863, 165.209

Rectangle

The Rectangle color scheme consists of four colors that form a rectangle on the color wheel.



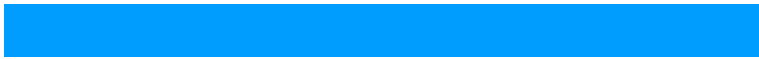
56, 80.530, 13.978



56, 80.530, 63.978



56, 80.530, 193.978



56, 80.530, 243.978

Sweetspot

The Sweet Spot groups the original color and five complimentary colors.



56, 80.526, 13.980



84, 25.607, 358.926



52, 112.432, 318.087



42, 17.566, 359.401



0, 0.000, 0.000



53, 0.007, 296.813

Same Dimension

The Same Dimension uses a secret algorithm to generate beautiful new colors.



56, 80.526, 13.980



54, 88.483, 22.723



60, 85.510, 42.765



50, 5.654, 357.099



40, 70.826, 21.632



10, 31.478, 13.034

Inverse Universe

The Inverse Universe completely reimagines the original color for something new.



56, 80.526, 13.980



54, 88.483, 22.723



79, 42.128, 230.383



50, 5.654, 357.099



40, 70.826, 21.632



10, 31.478, 13.034

Previews

White Background



This preview shows how the CIELCh color 56, 80.530, 13.978 looks on a white background.

Color Contrast Check

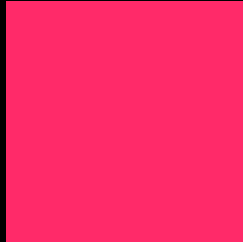
Large Text (above 18pt) WCAG AA ✓ Pass

Any Text WCAG AA ✗ Fail

Large Text (above 18pt) WCAG AAA ✗ Fail

Any Text WCAG AAA ✗ Fail

Black Background



This preview shows how the CIELCh color 56, 80.530, 13.978 looks on a black background.

Color Contrast Check

Large Text (above 18pt) WCAG AA ✓ Pass

Any Text WCAG AA ✓ Pass

Large Text (above 18pt) WCAG AAA ✓ Pass

Any Text WCAG AAA × Fail

If you want to check with other color combinations, try the [Color Contrast Checker](#).

CIELCh 56, 80.530, 13.978

Background



This preview shows how black text looks on a background with the CIELCh color 56, 80.530, 13.978.

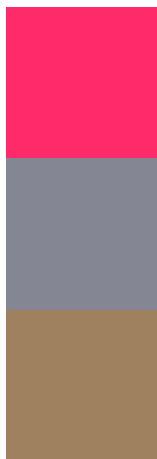


This preview shows how white text looks on a background with the CIELCh color 56, 80.530, 13.978.

Color Blindness Simulation

Color vision deficiency is a very complex topic, and I could not describe the different causes any better than Wikipedia does, so if you want to learn more, you should check out their [article about color blindness](#).

Dichromacy



Original Color

56, 80.530, 13.978

Protanopia

56, 7.445, 288.160

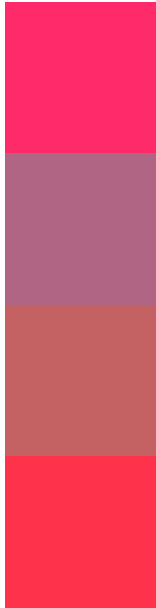
Deuteranopia

56, 24.008, 72.780



Tritanopia
56, 86.545, 33.326

Trichromacy



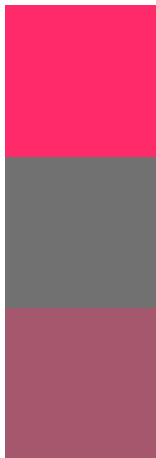
Original Color
56, 80.530, 13.978

Protanomaly
52, 34.733, 353.744

Deuteranomaly
53, 42.901, 23.675

Tritanomaly
56, 83.444, 26.741

Monochromacy



Original Color
56, 80.530, 13.978

Achromatopsia
48, 0.006, 296.813

Achromatomaly
47, 34.698, 2.351

CSS Examples

Text

The CSS property to change the color of the text to CIELCh 56, 80.530, 13.978 is called "color". The color property can be set on classes, ids or directly on the HTML element.

This example shows how text in the color `rgb(255, 42, 105)` looks like.

```
.text, #text, p{  
    color:rgb(255, 42, 105)  
}
```

If you want to add a text shadow in that color use the text-shadow property, you can generate a text shadow directly with our [CSS Text Shadow Generator](#).

Here you see how black text with a 4 pixel rgb(255, 42, 105) colored shadow looks like.

```
.shadow{ text-shadow: 4px 4px 2px rgb(255, 42, 105) }
```

Border

The CSS property to change the border of an element to CIELCh 56, 80.530, 13.978 is called "border". The border property can be set on classes, ids or directly on the HTML element.

This example shows the color as border, it can be applied via the CSS property "border" or "border-color".

```
.border, #border, table{ border:4px solid rgb(255, 42, 105) }
```

If only the border color should be changed use the property border-color.

```
.border{ border-color:rgb(255, 42, 105) }
```

If you want to add a box shadow in that color use:

Here you see how a box with a 4 pixel rgb(255, 42, 105) colored shadow looks like.

```
.boxshadow{ -moz-box-shadow:4px 4px 4px  
4px rgb(255, 42, 105); -webkit-box-  
shadow:4px 4px 4px 4px rgb(255, 42, 105);  
box-shadow:4px 4px 4px 4px rgb(255, 42,  
105) }
```

Background

The CSS property to change the background color of an element to CIELCh 56, 80.530, 13.978 is called "background". The background property can be set on classes, ids or directly on the HTML element.

```
.background, #background, body{  
background: rgb(255, 42, 105) }
```

If only the background color should be changed can be used:

```
.background{ background-color: rgb(255, 42,  
105) }
```

This example shows the color as background, it is applied via the CSS property "background".

To optimize and compress your CSS code, you can use our [online CSS compressor and optimizer](#) based on csstidy. If you want to create a linear or radial gradient as background or border, check our [CSS Gradient Generator](#).

Hey! You found this booklet interesting? Support Converting Colors with the new Membership Option!

The pro membership hides all ads, plus gives you double the colors in the color bucket, and more awesome pro features!

[Learn more, Memberships starting at \\$2.50/m!](#)

**Follow me
on Twitter!**

@ConvertingColor