

Converting Colors

CIELCh(56, 80.958, 8.593)

Have a look what the booklet for
CIELCh(56, 80.958, 8.593) contains.

CIELCh(56, 80.796, 8.672)	3
<i>Conversions</i>	4
<i>Details</i>	6
<i>Harmonies</i>	11
<i>Previews</i>	20
<i>Color Blindness Simulation</i>	23
<i>CSS Examples</i>	26

Color

CIELCh(56, 80.796, 8.672)

Conversions

Conversions Part 1

Format	Color
Hex	FF2575
RGB	255, 37, 117
RGB Percent	100%, 15%, 46%
CMY	0.0000, 0.8539, 0.5407
CMYK	0.00, 0.85, 0.54, 0.00
HSL	338°, 100%, 57%
HSV	338°, 85%, 100%
XYZ	45.1801, 23.9124, 19.0989
YIQ	111.3020, 104.2480, 71.0960

Conversions

Conversions Part 2

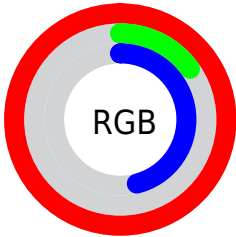
Format	Color
RYB	255, 37, 117
Decimal	16721269
CIELab	56.00, 79.87, 12.18
CIElCh	56, 80.796, 8.672
Yxy	23.9124, 0.5123, 0.2711
Android (android.graphics.Color)	4294911349 (0xFFFF2575)
YUV	111.3020, 2.8091, 126.0231
Hunter-Lab	48.9003, 79.3446, 11.0734

Details

The CIELCh color **56, 80.796, 8.672** is a dark color, and the websafe version is hex **FF0066**. The color can be described as middle washed rose. A complement of this color would be **89, 71.097, 159.739**, and the grayscale version is **47, 0.006, 296.813**.

A 20% lighter version of the original color is **66, 60.880, 356.523**, and **40, 68.909, 15.544** is the 20% darker color. If you saturate the color by 10%, you get **55, 84.404, 13.584**, and if you desaturate by 10%, it is **58, 75.241, 4.672**.

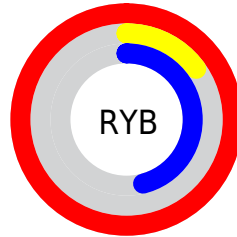
Distribution



Red (100%)

Green (15%)

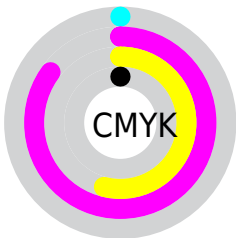
Blue (46%)



Red (100%)

Yellow (15%)

Blue (46%)

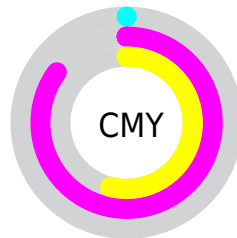


Cyan (0%)

Magenta (85%)

Yellow (54%)

Black (0%)



Cyan (0%)

Magenta (85%)

Yellow (54%)


Brightness & Saturation Gradients

These gradients show how the CIELCh color 56, 80.796, 8.672 changes by changing the brightness by 10 percent. The first figure shows a shift by +10% for each color and the second figure -10%.

Similar to the brightness gradients but the following saturation gradients show a change of the CIELCh color 56, 80.796, 8.672 by changing the saturation by 10% instead.

 56, 80.796, 8.672  56, 80.796, 8.672

 100, 80.796, 8.672  46, 80.796, 8.672

 76, 80.796, 8.672  36, 80.796, 8.672

 86, 80.796, 8.672  26, 80.796, 8.672

 96, 80.796, 8.672  16, 80.796, 8.672

 6, 80.796, 8.672

 0, 80.796, 8.672

 56, 80.796, 8.672  56, 80.796, 8.672

 55, 84.404, 13.584  58, 75.241, 4.672

 54, 85.788, 16.076  62, 67.776, 1.543

67, 58.695,
359.078

72, 48.524,
357.105

77, 37.776,
355.491

83, 26.858,
354.136

90, 16.052,
352.969

96, 5.527, 351.900

100, 0.012,
296.813

Harmonies

Complementary

The Complementary color scheme is a pair of colors which are on the opposite of each other on the color wheel.



56, 80.796, 8.672



89, 71.097, 159.739

Rectangle

The Rectangle color scheme consists of four colors that form a rectangle on the color wheel.



56, 80.796, 8.672



56, 80.796, 58.672



56, 80.796, 188.672



56, 80.796, 238.672

Sweetspot

The Sweet Spot groups the original color and five complimentary colors.



56, 80.751, 8.647



83, 27.524, 354.213



49, 114.890, 315.568



42, 18.727, 354.662



0, 0.000, 0.000



53, 0.007, 296.813

Same Dimension

The Same Dimension uses a secret algorithm to generate beautiful new colors.



56, 80.751, 8.647



54, 85.788, 16.076



57, 90.924, 39.437



50, 5.872, 352.341



40, 68.864, 15.024



10, 31.287, 7.622

Inverse Universe

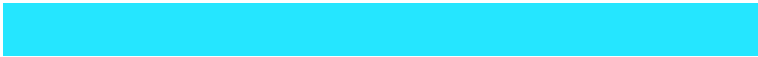
The Inverse Universe completely reimagines the original color for something new.



56, 80.751, 8.647



54, 85.788, 16.076



84, 43.336, 215.109



50, 5.872, 352.341



40, 68.864, 15.024



10, 31.287, 7.622

Previews

White Background



This preview shows how the CIELCh color 56, 80.796, 8.672 looks on a white background.

Color Contrast Check

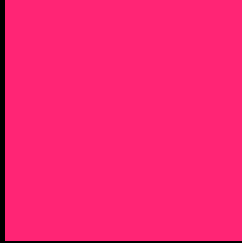
Large Text (above 18pt) WCAG AA ✓ Pass

Any Text WCAG AA ✗ Fail

Large Text (above 18pt) WCAG AAA ✗ Fail

Any Text WCAG AAA ✗ Fail

Black Background



This preview shows how the CIELCh color 56, 80.796, 8.672 looks on a black background.

Color Contrast Check

Large Text (above 18pt) WCAG AA ✓ Pass

Any Text WCAG AA ✓ Pass

Large Text (above 18pt) WCAG AAA ✓ Pass

Any Text WCAG AAA × Fail

If you want to check with other color combinations, try the [Color Contrast Checker](#).

CIELCh 56, 80.796, 8.672

Background



This preview shows how black text looks on a background with the CIELCh color 56, 80.796, 8.672.

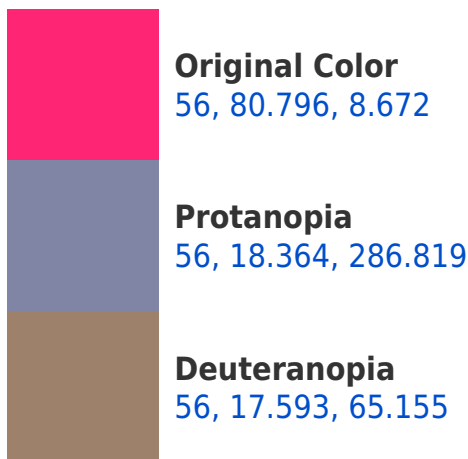


This preview shows how white text looks on a background with the CIELCh color 56, 80.796, 8.672.

Color Blindness Simulation

Color vision deficiency is a very complex topic, and I could not describe the different causes any better than Wikipedia does, so if you want to learn more, you should check out their [article about color blindness](#).

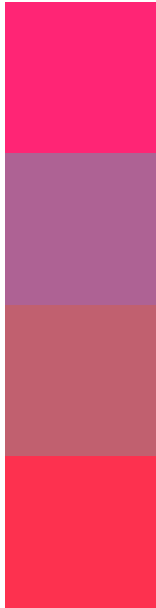
Dichromacy





Tritanopia
56, 85.740, 33.139

Trichromacy



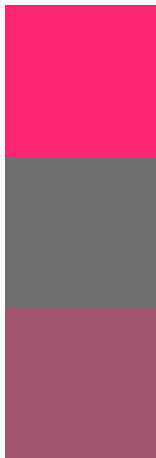
Original Color
56, 80.796, 8.672

Protanomaly
52, 40.124, 339.523

Deuteranomaly
53, 41.460, 13.656

Tritanomaly
56, 82.236, 24.703

Monochromacy



Original Color
56, 80.796, 8.672

Achromatopsia
47, 0.006, 296.813

Achromatomaly
46, 35.991, 357.387

CSS Examples

Text

The CSS property to change the color of the text to CIELCh 56, 80.796, 8.672 is called "color". The color property can be set on classes, ids or directly on the HTML element.

This example shows how text in the color `rgb(255, 37, 117)` looks like.

```
.text, #text, p{  
    color:rgb(255, 37, 117)  
}
```

If you want to add a text shadow in that color use the text-shadow property, you can generate a text shadow directly with our [CSS Text Shadow Generator](#).

Here you see how black text with a 4 pixel rgb(255, 37, 117) colored shadow looks like.

```
.shadow{ text-shadow: 4px 4px 2px rgb(255, 37, 117) }
```

Border

The CSS property to change the border of an element to CIELCh 56, 80.796, 8.672 is called "border". The border property can be set on classes, ids or directly on the HTML element.

This example shows the color as border, it can be applied via the CSS property "border" or "border-color".

```
.border, #border, table{ border:4px solid rgb(255, 37, 117) }
```

If only the border color should be changed use the property `border-color`.

```
.border{ border-color:rgb(255, 37, 117) }
```

If you want to add a box shadow in that color use:

Here you see how a box with a 4 pixel `rgb(255, 37, 117)` colored shadow looks like.

```
.boxshadow{ -moz-box-shadow:4px 4px 4px 4px rgb(255, 37, 117); -webkit-box-shadow:4px 4px 4px 4px rgb(255, 37, 117); box-shadow:4px 4px 4px 4px rgb(255, 37, 117) }
```

Background

The CSS property to change the background color of an element to CIELCh 56, 80.796, 8.672 is called "background". The background property can be set on classes, ids or directly on the HTML element.

```
.background, #background, body{  
background: rgb(255, 37, 117) }
```

If only the background color should be changed can be used:

```
.background{ background-color: rgb(255, 37,  
117) }
```

This example shows the color as background, it is applied via the CSS property "background".

To optimize and compress your CSS code, you can use our [online CSS compressor and optimizer](#) based on csstidy. If you want to create a linear or radial gradient as background or border, check our [CSS Gradient Generator](#).

Hey! You found this booklet interesting? Support Converting Colors with the new Membership Option!

The pro membership hides all ads, plus gives you double the colors in the color bucket, and more awesome pro features!

[Learn more, Memberships starting at \\$2.50/m!](#)

**Follow me
on Twitter!**

@ConvertingColor