

Converting Colors

CIELCh(56, 81.029, 15.876)

Have a look what the booklet for
CIELCh(56, 81.029, 15.876) contains.

CIELCh(56, 80.982, 15.984)	3
<i>Conversions</i>	4
<i>Details</i>	6
<i>Harmonies</i>	11
<i>Previews</i>	20
<i>Color Blindness Simulation</i>	23
<i>CSS Examples</i>	26

Color

CIELCh(56, 80.982, 15.984)

Conversions

Conversions Part 1

Format	Color
Hex	FF2A64
RGB	255, 42, 100
RGB Percent	100%, 16%, 39%
CMY	0.0000, 0.8338, 0.6071
CMYK	0.00, 0.83, 0.61, 0.00
HSL	344°, 100%, 58%
HSV	344°, 83%, 100%
XYZ	44.4817, 23.9124, 14.3747
YIQ	112.2990, 108.3300, 63.1940

Conversions

Conversions Part 2

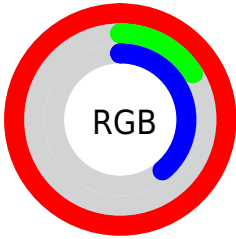
Format	Color
R_{YB}	255, 42, 100
Decimal	16722532
CIE _{Lab}	56.00, 77.85, 22.30
CIE _{LCh}	56, 80.982, 15.984
Yxy	23.9124, 0.5374, 0.2889
Android (android.graphics.Color)	4294912612 (0xFFFF2A64)
YUV	112.2990, -6.0634, 125.1488
Hunter-Lab	48.9003, 76.7952, 16.8014

Details

The CIELCh color **56, 80.982, 15.984** is a dark color, and the websafe version is hex **FF3366**. The color can be described as dark washed rose. A complement of this color would be **90, 63.079, 167.148**, and the grayscale version is **47, 0.006, 296.813**.

A 20% lighter version of the original color is **66, 58.221, 6.781**, and **40, 70.889, 22.647** is the 20% darker color. If you saturate the color by 10%, you get **54, 86.461, 21.122**, and if you desaturate by 10%, it is **59, 73.851, 11.693**.

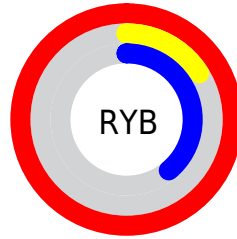
Distribution



Red (100%)

Green (16%)

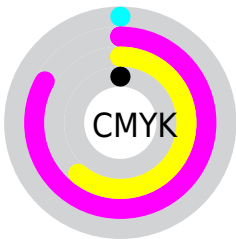
Blue (39%)



Red (100%)

Yellow (16%)

Blue (39%)

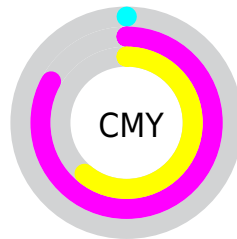


Cyan (0%)

Magenta (83%)

Yellow (61%)

Black (0%)



Cyan (0%)

Magenta (83%)

Yellow (61%)


Brightness & Saturation Gradients

These gradients show how the CIELCh color 56, 80.982, 15.984 changes by changing the brightness by 10 percent. The first figure shows a shift by +10% for each color and the second figure -10%.

Similar to the brightness gradients but the following saturation gradients show a change of the CIELCh color 56, 80.982, 15.984 by changing the saturation by 10% instead.

 56, 80.982, 15.984

 56, 80.982, 15.984

 100, 80.982,
15.984

 46, 80.982, 15.984

 76, 80.982, 15.984

 36, 80.982, 15.984

 86, 80.982, 15.984

 26, 80.982, 15.984

 96, 80.982, 15.984

 16, 80.982, 15.984

 6, 80.982, 15.984

 0, 80.982, 15.984

 56, 80.982, 15.984

 56, 80.982, 15.984

 54, 86.461, 21.122

 59, 73.851, 11.693

 54, 89.683, 24.845

 62, 65.286, 8.315

67, 55.535, 5.656

72, 45.069, 3.544

78, 34.332, 1.837

85, 23.660, 0.425

91, 13.269,
359.223

98, 3.280, 358.075

100, 0.012,
296.813

Harmonies

Complementary

The Complementary color scheme is a pair of colors which are on the opposite of each other on the color wheel.



56, 80.982, 15.984



90, 63.079, 167.148

Rectangle

The Rectangle color scheme consists of four colors that form a rectangle on the color wheel.



56, 80.982, 15.984



56, 80.982, 65.984



56, 80.982, 195.984



56, 80.982, 245.984

Sweetspot

The Sweet Spot groups the original color and five complimentary colors.



56, 80.899, 15.949



84, 25.373, 0.637



52, 112.146, 318.605



42, 17.415, 1.119



0, 0.000, 0.000



53, 0.007, 296.813

Same Dimension

The Same Dimension uses a secret algorithm to generate beautiful new colors.



56, 80.899, 15.949



54, 89.683, 24.845



60, 84.627, 43.612



50, 5.590, 358.794



40, 71.721, 23.757



10, 31.587, 14.635

Inverse Universe

The Inverse Universe completely reimagines the original color for something new.



56, 80.899, 15.949



54, 89.683, 24.845



78, 42.263, 233.533



50, 5.590, 358.794



40, 71.721, 23.757



10, 31.587, 14.635

Previews

White Background



This preview shows how the CIELCh color 56, 80.982, 15.984 looks on a white background.

Color Contrast Check

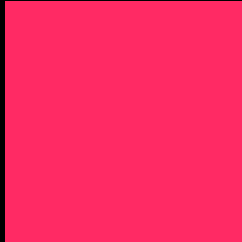
Large Text (above 18pt) WCAG AA ✓ Pass

Any Text WCAG AA ✗ Fail

Large Text (above 18pt) WCAG AAA ✗ Fail

Any Text WCAG AAA ✗ Fail

Black Background



This preview shows how the CIELCh color 56, 80.982, 15.984 looks on a black background.

Color Contrast Check

Large Text (above 18pt) WCAG AA ✓ Pass

Any Text WCAG AA ✓ Pass

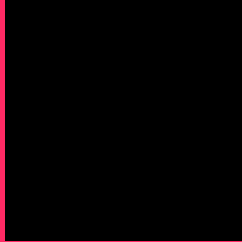
Large Text (above 18pt) WCAG AAA ✓ Pass

Any Text WCAG AAA × Fail

If you want to check with other color combinations, try the [Color Contrast Checker](#).

CIELCh 56, 80.982, 15.984

Background



This preview shows how black text looks on a background with the CIELCh color 56, 80.982, 15.984.



This preview shows how white text looks on a background with the CIELCh color 56, 80.982, 15.984.

Color Blindness Simulation

Color vision deficiency is a very complex topic, and I could not describe the different causes any better than Wikipedia does, so if you want to learn more, you should check out their [article about color blindness](#).

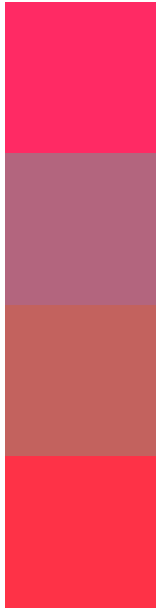
Dichromacy





Tritanopia
56, 86.975, 33.473

Trichromacy



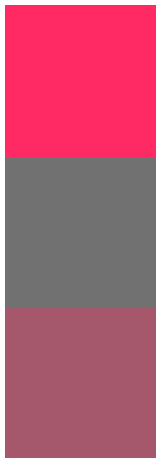
Original Color
56, 80.982, 15.984

Protanomaly
52, 34.399, 359.874

Deuteranomaly
53, 43.358, 27.913

Tritanomaly
56, 84.100, 27.794

Monochromacy



Original Color
56, 80.982, 15.984

Achromatopsia
48, 0.006, 296.813

Achromatomaly
47, 34.502, 4.242

CSS Examples

Text

The CSS property to change the color of the text to CIELCh 56, 80.982, 15.984 is called "color". The color property can be set on classes, ids or directly on the HTML element.

This example shows how text in the color `rgb(255, 42, 100)` looks like.

```
.text, #text, p{  
    color:rgb(255, 42, 100)  
}
```

If you want to add a text shadow in that color use the text-shadow property, you can generate a text shadow directly with our [CSS Text Shadow Generator](#).

Here you see how black text with a 4 pixel rgb(255, 42, 100) colored shadow looks like.

```
.shadow{ text-shadow: 4px 4px 2px rgb(255, 42, 100) }
```

Border

The CSS property to change the border of an element to CIELCh 56, 80.982, 15.984 is called "border". The border property can be set on classes, ids or directly on the HTML element.

This example shows the color as border, it can be applied via the CSS property "border" or "border-color".

```
.border, #border, table{ border:4px solid rgb(255, 42, 100) }
```

If only the border color should be changed use the property border-color.

```
.border{ border-color:rgb(255, 42, 100) }
```

If you want to add a box shadow in that color use:

Here you see how a box with a 4 pixel rgb(255, 42, 100) colored shadow looks like.

```
.boxshadow{ -moz-box-shadow:4px 4px 4px  
4px rgb(255, 42, 100); -webkit-box-  
shadow:4px 4px 4px 4px rgb(255, 42, 100);  
box-shadow:4px 4px 4px 4px rgb(255, 42,  
100) }
```

Background

The CSS property to change the background color of an element to CIELCh 56, 80.982, 15.984 is called "background". The background property can be set on classes, ids or directly on the HTML element.

```
.background, #background, body{  
background: rgb(255, 42, 100) }
```

If only the background color should be changed can be used:

```
.background{ background-color: rgb(255, 42,  
100) }
```

This example shows the color as background, it is applied via the CSS property "background".

To optimize and compress your CSS code, you can use our [online CSS compressor and optimizer](#) based on csstidy. If you want to create a linear or radial gradient as background or border, check our [CSS Gradient Generator](#).

Hey! You found this booklet interesting? Support Converting Colors with the new Membership Option!

The pro membership hides all ads, plus gives you double the colors in the color bucket, and more awesome pro features!

[Learn more, Memberships starting at \\$2.50/m!](#)

**Follow me
on Twitter!**

@ConvertingColor