

Converting Colors

CIELCh(57, 15.734, 65.020)

Have a look what the booklet for
CIELCh(57, 15.734, 65.020) contains.

CIELCh(57, 16.019, 64.875)	3
<i>Conversions</i>	4
<i>Details</i>	6
<i>Harmonies</i>	11
<i>Previews</i>	20
<i>Color Blindness Simulation</i>	23
<i>CSS Examples</i>	26

Color

CIELCh(57, 16.019, 64.875)

Conversions

Conversions Part 1

Format	Color
Hex	9E8470
RGB	158, 132, 112
RGB Percent	62%, 52%, 44%
CMY	0.3806, 0.4825, 0.5610
CMYK	0.00, 0.16, 0.29, 0.38
HSL	26°, 19%, 53%
HSV	26°, 29%, 62%
XYZ	25.2578, 24.9227, 18.7950
YIQ	137.4940, 21.9160, -0.7080

Conversions

Conversions Part 2

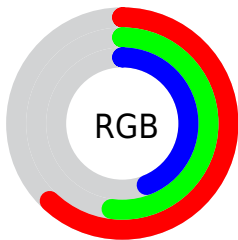
Format	Color
R_YB	158, 147, 112
Decimal	10388592
CIE _{Lab}	57.00, 6.80, 14.50
CIE _{LCh}	57, 16.019, 64.875
Yxy	24.9227, 0.3662, 0.3613
Android (android.graphics.Color)	4288578672 (0xFF9E8470)
YUV	137.4940, -12.5685, 17.9838
Hunter-Lab	49.9226, 2.9457, 12.6241

Details

The CIELCh color $57, 16.019, 64.875$ is a dark color, and the websafe version is hex 999999 . A complement of this color would be $56, 14.336, 252.191$, and the grayscale version is $57, 0.007, 296.813$.

A 20% lighter version of the original color is $77, 15.853, 64.778$, and $37, 16.196, 65.800$ is the 20% darker color. If you saturate the color by 10%, you get $54, 22.154, 63.828$, and if you desaturate by 10%, it is $60, 10.220, 65.948$.

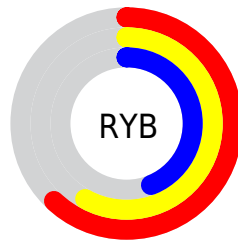
Distribution



Red (62%)

Green (52%)

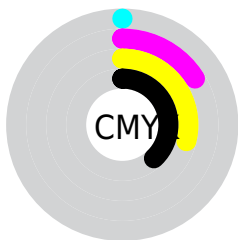
Blue (44%)



Red (62%)

Yellow (58%)

Blue (44%)

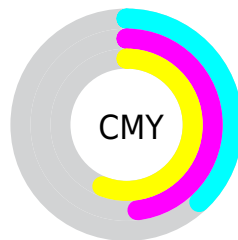


Cyan (0%)

Magenta (16%)

Yellow (29%)

Black (38%)



Cyan (38%)

Magenta (48%)

Yellow (56%)

Brightness & Saturation Gradients

These gradients show how the CIELCh color 57, 16.019, 64.875 changes by changing the brightness by 10 percent. The first figure shows a shift by +10% for each color and the second figure -10%.

Similar to the brightness gradients but the following saturation gradients show a change of the CIELCh color 57, 16.019, 64.875 by changing the saturation by 10% instead.

■ 57, 16.019, 64.875

■ 57, 16.019, 64.875

■ 100, 16.019,
64.875

■ 47, 16.019, 64.875

■ 77, 16.019, 64.875

■ 37, 16.019, 64.875

■ 87, 16.019, 64.875

■ 27, 16.019, 64.875

■ 97, 16.019, 64.875

■ 17, 16.019, 64.875

■ 7, 16.019, 64.875

■ 0, 16.019, 64.875

■ 57, 16.019, 64.875

■ 57, 16.019, 64.875

■ 54, 22.154, 63.828

■ 60, 10.220, 65.948

■ 52, 28.626, 62.791

■ 63, 4.739, 66.993

49, 35.394, 61.765

65, 0.451, 248.929

47, 42.345, 60.714

68, 5.378, 249.284

45, 49.209, 59.541

71, 10.072,
250.303

42, 55.450, 58.027

74, 14.560,
251.315

41, 60.718, 56.152

40, 61.221, 56.037

77, 18.866,
252.301

80, 23.012,
253.254

83, 27.018,
254.172

Harmonies

Complementary

The Complementary color scheme is a pair of colors which are on the opposite of each other on the color wheel.



57, 16.019, 64.875



56, 14.336, 252.191

Rectangle

The Rectangle color scheme consists of four colors that form a rectangle on the color wheel.



57, 16.019, 64.875



57, 16.019, 114.875



57, 16.019, 244.875



57, 16.019, 294.875

Sweetspot

The Sweet Spot groups the original color and five complimentary colors.



57, 16.019, 64.883



80, 5.819, 66.988



53, 23.473, 342.651



42, 4.092, 66.847



92, 0.011, 296.813



44, 0.006, 296.813

Same Dimension

The Same Dimension uses a secret algorithm to generate beautiful new colors.



57, 16.019, 64.883



71, 24.416, 64.189



63, 23.724, 104.433



32, 2.941, 66.981



37, 56.730, 56.390



2, 3.730, 65.388

Inverse Universe

The Inverse Universe completely reimagines the original color for something new.



56, 14.336, 252.191



70, 21.232, 253.459



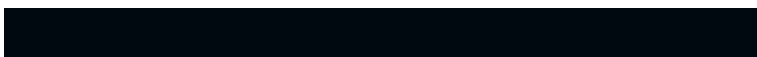
50, 25.166, 290.983



32, 2.853, 249.207



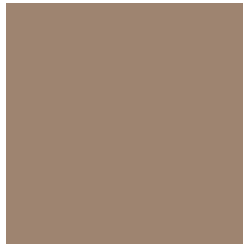
34, 40.341, 275.791



2, 3.830, 251.428

Previews

White Background



This preview shows how the CIELCh color 57, 16.019, 64.875 looks on a white background.

Color Contrast Check

Large Text (above 18pt) WCAG AA ✓ Pass

Any Text WCAG AA × Fail

Large Text (above 18pt) WCAG AAA × Fail

Any Text WCAG AAA × Fail

Black Background



This preview shows how the CIELCh color 57, 16.019, 64.875 looks on a black background.

Color Contrast Check

Large Text (above 18pt) WCAG AA ✓ Pass

Any Text WCAG AA ✓ Pass

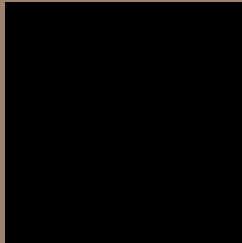
Large Text (above 18pt) WCAG AAA ✓ Pass

Any Text WCAG AAA × Fail

If you want to check with other color combinations, try the [Color Contrast Checker](#).

CIELCh 57, 16.019, 64.875

Background



This preview shows how black text looks on a background with the CIELCh color 57, 16.019, 64.875.



This preview shows how white text looks on a background with the CIELCh color 57, 16.019, 64.875.

Color Blindness Simulation

Color vision deficiency is a very complex topic, and I could not describe the different causes any better than Wikipedia does, so if you want to learn more, you should check out their [article about color blindness](#).

Dichromacy



Original Color

57, 16.019, 64.875

Protanopia

57, 13.462, 94.168

Deuteranopia

57, 16.333, 63.808



Tritanopia
57, 14.362, 357.783

Trichromacy



Original Color
57, 16.019, 64.875

Protanomaly
57, 14.044, 81.795

Deuteranomaly
57, 16.333, 63.808

Tritanomaly
57, 12.718, 20.737

Monochromacy



Original Color
57, 16.019, 64.875

Achromatopsia
57, 0.007, 296.813

Achromatomaly
57, 5.674, 64.059

CSS Examples

Text

The CSS property to change the color of the text to CIELCh 57, 16.019, 64.875 is called "color". The color property can be set on classes, ids or directly on the HTML element.

This example shows how text in the color `rgb(158, 132, 112)` looks like.

```
.text, #text, p{  
    color:rgb(158, 132, 112)  
}
```

If you want to add a text shadow in that color use the text-shadow property, you can generate a text shadow directly with our [CSS Text Shadow Generator](#).

Here you see how black text with a 4 pixel rgb(158, 132, 112) colored shadow looks like.

```
.shadow{ text-shadow: 4px 4px 2px rgb(158, 132, 112) }
```

Border

The CSS property to change the border of an element to CIELCh 57, 16.019, 64.875 is called "border". The border property can be set on classes, ids or directly on the HTML element.

This example shows the color as border, it can be applied via the CSS property "border" or "border-color".

```
.border, #border, table{ border:4px solid rgb(158, 132, 112) }
```

If only the border color should be changed use the property `border-color`.

```
.border{ border-color:rgb(158, 132, 112) }
```

If you want to add a box shadow in that color use:

Here you see how a box with a 4 pixel `rgb(158, 132, 112)` colored shadow looks like.

```
.boxshadow{ -moz-box-shadow:4px 4px 4px  
4px rgb(158, 132, 112); -webkit-box-  
shadow:4px 4px 4px 4px rgb(158, 132, 112);  
box-shadow:4px 4px 4px 4px rgb(158, 132,  
112) }
```

Background

The CSS property to change the background color of an element to CIELCh 57, 16.019, 64.875 is called "background". The background property can be set on classes, ids or directly on the HTML element.

```
.background, #background, body{  
background: rgb(158, 132, 112) }
```

If only the background color should be changed can be used:

```
.background{ background-color: rgb(158,  
132, 112) }
```

This example shows the color as background, it is applied via the CSS property "background".

To optimize and compress your CSS code, you can use our [online CSS compressor and optimizer](#) based on csstidy. If you want to create a linear or radial gradient as background or border, check our [CSS Gradient Generator](#).

Hey! You found this booklet interesting? Support Converting Colors with the new Membership Option!

The pro membership hides all ads, plus gives you double the colors in the color bucket, and more awesome pro features!

[Learn more, Memberships starting at \\$2.50/m!](#)

**Follow me
on Twitter!**

@ConvertingColor