

Converting Colors

CIELCh(57, 22.494, 21.887)

Have a look what the booklet for
CIELCh(57, 22.494, 21.887) contains.

CIELCh(57, 22.691, 21.926)	3
<i>Conversions</i>	4
<i>Details</i>	6
<i>Harmonies</i>	11
<i>Previews</i>	20
<i>Color Blindness Simulation</i>	23
<i>CSS Examples</i>	26

Color

CIELCh(57, 22.691, 21.926)

Conversions

Conversions Part 1

Format	Color
Hex	B17B7B
RGB	177, 123, 123
RGB Percent	69%, 48%, 48%
CMY	0.3061, 0.5178, 0.5178
CMYK	0.00, 0.31, 0.31, 0.31
HSL	0°, 26%, 59%
HSV	0°, 31%, 69%
XYZ	28.7674, 24.9227, 22.0167
YIQ	139.1460, 32.1840, 11.4480

Conversions

Conversions Part 2

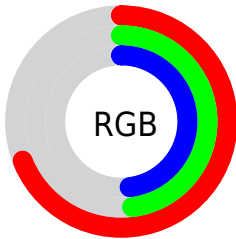
Format	Color
R_{YB}	177, 123, 123
Decimal	11631483
CIE _{Lab}	57.00, 21.05, 8.47
CIE _{LCh}	57, 22.691, 21.926
Yxy	24.9227, 0.3800, 0.3292
Android (android.graphics.Color)	4289821563 (0xFFB17B7B)
YUV	139.1460, -7.9600, 33.1980
Hunter-Lab	49.9226, 15.4944, 8.7979

Details

The CIELCh color $57, 22.691, 21.926$ is a dark color, and the websafe version is hex 996666 . A complement of this color would be $69, 18.462, 197.925$, and the grayscale version is $58, 0.007, 296.813$.

A 20% lighter version of the original color is $77, 22.743, 22.654$, and $37, 22.642, 23.018$ is the 20% darker color. If you saturate the color by 10%, you get $52, 31.197, 23.317$, and if you desaturate by 10%, it is $62, 14.690, 20.861$.

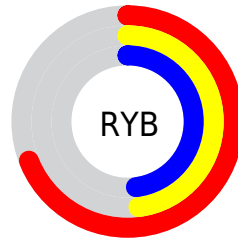
Distribution



Red (69%)

Green (48%)

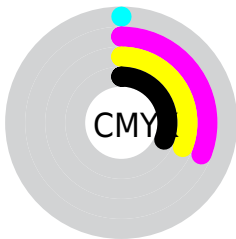
Blue (48%)



Red (69%)

Yellow (48%)

Blue (48%)

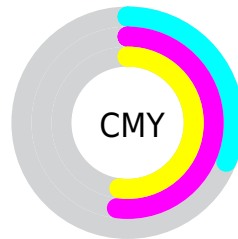


Cyan (0%)

Magenta (31%)

Yellow (31%)

Black (31%)



Cyan (31%)

Magenta (52%)

Yellow (52%)

Brightness & Saturation Gradients

These gradients show how the CIELCh color 57, 22.691, 21.926 changes by changing the brightness by 10 percent. The first figure shows a shift by +10% for each color and the second figure -10%.

Similar to the brightness gradients but the following saturation gradients show a change of the CIELCh color 57, 22.691, 21.926 by changing the saturation by 10% instead.

■ 57, 22.691, 21.926

■ 57, 22.691, 21.926

■ 100, 22.691,
21.926

■ 47, 22.691, 21.926

■ 77, 22.691, 21.926

■ 37, 22.691, 21.926

■ 87, 22.691, 21.926

■ 27, 22.691, 21.926

■ 97, 22.691, 21.926

■ 17, 22.691, 21.926

■ 7, 22.691, 21.926

■ 0, 22.691, 21.926

■ 57, 22.691, 21.926

■ 57, 22.691, 21.926

■ 52, 31.197, 23.317

■ 62, 14.690, 20.861

■ 48, 40.101, 25.121

■ 67, 7.243, 20.010

44, 49.208, 27.450

72, 0.342, 17.972

41, 58.234, 30.371

77, 6.044, 199.029

39, 66.782, 33.799

82, 11.960,
198.592

37, 74.117, 37.247

88, 17.457,
198.260

37, 79.453, 39.961

93, 22.584,
197.996

95, 24.846,
197.885

Harmonies

Complementary

The Complementary color scheme is a pair of colors which are on the opposite of each other on the color wheel.



57, 22.691, 21.926



69, 18.462, 197.925

Rectangle

The Rectangle color scheme consists of four colors that form a rectangle on the color wheel.



57, 22.691, 21.926



57, 22.691, 71.926



57, 22.691, 201.926



57, 22.691, 251.926

Sweetspot

The Sweet Spot groups the original color and five complimentary colors.



57, 22.689, 21.931



85, 7.618, 19.903



59, 36.204, 326.071



44, 5.318, 20.015



96, 0.011, 296.813



48, 0.006, 296.813

Same Dimension

The Same Dimension uses a secret algorithm to generate beautiful new colors.



57, 22.689, 21.931



69, 34.859, 22.879



64, 18.949, 71.672



35, 3.911, 19.917



31, 70.930, 39.527



2, 9.155, 19.408

Inverse Universe

The Inverse Universe completely reimagines the original color for something new.



69, 18.462, 197.925



86, 26.854, 197.631



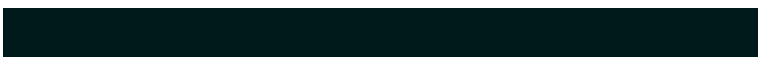
61, 17.434, 260.159



37, 3.690, 198.992



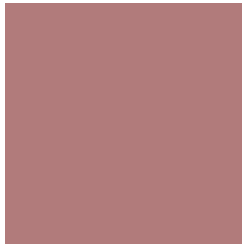
57, 34.224, 196.395



7, 9.137, 199.109

Previews

White Background



This preview shows how the CIELCh color 57, 22.691, 21.926 looks on a white background.

Color Contrast Check

Large Text (above 18pt) WCAG AA ✓ Pass

Any Text WCAG AA ✗ Fail

Large Text (above 18pt) WCAG AAA ✗ Fail

Any Text WCAG AAA ✗ Fail

Black Background



This preview shows how the CIE LCh color 57, 22.691, 21.926 looks on a black background.

Color Contrast Check

Large Text (above 18pt) WCAG AA ✓ Pass

Any Text WCAG AA ✓ Pass

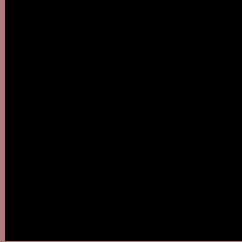
Large Text (above 18pt) WCAG AAA ✓ Pass

Any Text WCAG AAA × Fail

If you want to check with other color combinations, try the [Color Contrast Checker](#).

CIELCh 57, 22.691, 21.926

Background



This preview shows how black text looks on a background with the CIELCh color 57, 22.691, 21.926.



This preview shows how white text looks on a background with the CIELCh color 57, 22.691, 21.926.

Color Blindness Simulation

Color vision deficiency is a very complex topic, and I could not describe the different causes any better than Wikipedia does, so if you want to learn more, you should check out their [article about color blindness](#).

Dichromacy



Original Color

57, 22.691, 21.926

Protanopia

57, 4.275, 87.634

Deuteranopia

57, 11.868, 51.805



Tritanopia
57, 23.472, 9.733

Trichromacy



Original Color
57, 22.691, 21.926

Protanomaly
57, 9.483, 37.590

Deuteranomaly
57, 15.264, 35.806

Tritanomaly
57, 23.381, 13.842

Monochromacy



Original Color
57, 22.691, 21.926

Achromatopsia
58, 0.007, 296.813

Achromatomaly
57, 8.073, 20.197

CSS Examples

Text

The CSS property to change the color of the text to CIELCh 57, 22.691, 21.926 is called "color". The color property can be set on classes, ids or directly on the HTML element.

This example shows how text in the color `rgb(177, 123, 123)` looks like.

```
.text, #text, p{  
    color:rgb(177, 123, 123)  
}
```

If you want to add a text shadow in that color use the text-shadow property, you can generate a text shadow directly with our [CSS Text Shadow Generator](#).

Here you see how black text with a 4 pixel rgb(177, 123, 123) colored shadow looks like.

```
.shadow{ text-shadow: 4px 4px 2px rgb(177, 123, 123) }
```

Border

The CSS property to change the border of an element to CIELCh 57, 22.691, 21.926 is called "border". The border property can be set on classes, ids or directly on the HTML element.

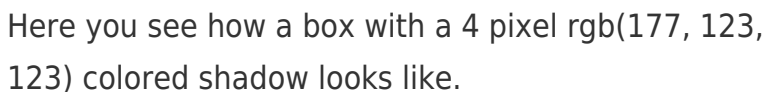
This example shows the color as border, it can be applied via the CSS property "border" or "border-color".

```
.border, #border, table{ border:4px solid rgb(177, 123, 123) }
```

If only the border color should be changed use the property `border-color`.

```
.border{ border-color:rgb(177, 123, 123) }
```

If you want to add a box shadow in that color use:



Here you see how a box with a 4 pixel `rgb(177, 123, 123)` colored shadow looks like.

```
.boxshadow{ -moz-box-shadow:4px 4px 4px 4px rgb(177, 123, 123); -webkit-box-shadow:4px 4px 4px 4px rgb(177, 123, 123); box-shadow:4px 4px 4px 4px rgb(177, 123, 123) }
```

Background

The CSS property to change the background color of an element to CIELCh 57, 22.691, 21.926 is called "background". The background property can be set on classes, ids or directly on the HTML element.

```
.background, #background, body{  
background: rgb(177, 123, 123) }
```

If only the background color should be changed can be used:

```
.background{ background-color: rgb(177,  
123, 123) }
```

This example shows the color as background, it is applied via the CSS property "background".

To optimize and compress your CSS code, you can use our [online CSS compressor and optimizer](#) based on csstidy. If you want to create a linear or radial gradient as background or border, check our [CSS Gradient Generator](#).

Hey! You found this booklet interesting? Support Converting Colors with the new Membership Option!

The pro membership hides all ads, plus gives you double the colors in the color bucket, and more awesome pro features!

[Learn more, Memberships starting at \\$2.50/m!](#)

**Follow me
on Twitter!**

@ConvertingColor