

Converting Colors

CIELCh(57, 23.449, 20.630)

Have a look what the booklet for
CIELCh(57, 23.449, 20.630) contains.

CIELCh(57, 23.519, 20.691)	3
<i>Conversions</i>	4
<i>Details</i>	6
<i>Harmonies</i>	11
<i>Previews</i>	20
<i>Color Blindness Simulation</i>	23
<i>CSS Examples</i>	26

Color

CIELCh(57, 23.519, 20.691)

Conversions

Conversions Part 1

Format	Color
Hex	B27A7B
RGB	178, 122, 123
RGB Percent	70%, 48%, 48%
CMY	0.3008, 0.5205, 0.5166
CMYK	0.00, 0.31, 0.31, 0.30
HSL	359°, 27%, 59%
HSV	359°, 31%, 70%
XYZ	29.0130, 24.9227, 22.1086
YIQ	138.8580, 33.0550, 12.1830

Conversions

Conversions Part 2

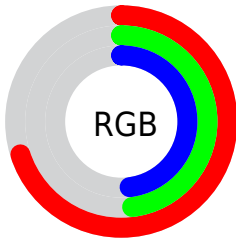
Format	Color
RYB	178, 122, 123
Decimal	11696763
CIELab	57.00, 22.00, 8.31
CIELCh	57, 23.519, 20.691
Yxy	24.9227, 0.3815, 0.3277
Android (android.graphics.Color)	4289886843 (0xFFB27A7B)
YUV	138.8580, -7.8180, 34.3275
Hunter-Lab	49.9226, 16.3723, 8.6888

Details

The CIELCh color **57, 23.519, 20.691** is a dark color, and the websafe version is hex **996666**. A complement of this color would be **69, 19.138, 196.221**, and the grayscale version is **58, 0.007, 296.813**.

A 20% lighter version of the original color is **77, 23.514, 21.411**, and **37, 23.525, 21.764** is the 20% darker color. If you saturate the color by 10%, you get **52, 32.048, 22.157**, and if you desaturate by 10%, it is **62, 15.463, 19.559**.

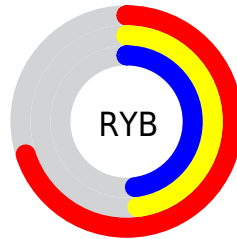
Distribution



Red (70%)

Green (48%)

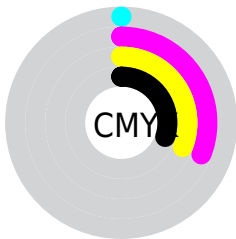
Blue (48%)



Red (70%)

Yellow (48%)

Blue (48%)

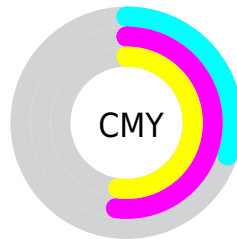


Cyan (0%)

Magenta (31%)

Yellow (31%)

Black (30%)



Cyan (30%)

Magenta (52%)

Yellow (52%)

Brightness & Saturation Gradients

These gradients show how the CIELCh color 57, 23.519, 20.691 changes by changing the brightness by 10 percent. The first figure shows a shift by +10% for each color and the second figure -10%.

Similar to the brightness gradients but the following saturation gradients show a change of the CIELCh color 57, 23.519, 20.691 by changing the saturation by 10% instead.

■ 57, 23.519, 20.691

■ 57, 23.519, 20.691

■ 100, 23.519,
20.691

■ 47, 23.519, 20.691

■ 77, 23.519, 20.691

■ 37, 23.519, 20.691

■ 87, 23.519, 20.691

■ 27, 23.519, 20.691

■ 97, 23.519, 20.691

■ 17, 23.519, 20.691

■ 7, 23.519, 20.691

■ 0, 23.519, 20.691

■ 57, 23.519, 20.691

■ 57, 23.519, 20.691

■ 52, 32.048, 22.157

■ 62, 15.463, 19.559

■ 48, 40.931, 24.047

■ 67, 7.939, 18.650

44, 49.958, 26.477

72, 0.951, 17.490

41, 58.844, 29.519

77, 5.528, 197.559

39, 67.212, 33.098

82, 11.540,
197.065

38, 74.406, 36.749

88, 17.133,
196.685

37, 79.124, 39.242

93, 22.355,
196.375

95, 24.468,
197.909

Harmonies

Complementary

The Complementary color scheme is a pair of colors which are on the opposite of each other on the color wheel.



57, 23.519, 20.691



69, 19.138, 196.221

Rectangle

The Rectangle color scheme consists of four colors that form a rectangle on the color wheel.



57, 23.519, 20.691



57, 23.519, 70.691



57, 23.519, 200.691



57, 23.519, 250.691

Sweetspot

The Sweet Spot groups the original color and five complimentary colors.



57, 23.517, 20.696



86, 7.686, 18.462



59, 37.168, 325.161



45, 5.414, 18.581



96, 0.011, 296.813



49, 0.007, 296.813

Same Dimension

The Same Dimension uses a secret algorithm to generate beautiful new colors.



57, 23.517, 20.696



69, 36.108, 21.714



64, 19.407, 68.044



35, 3.910, 18.476



31, 70.268, 38.817



2, 9.160, 18.264

Inverse Universe

The Inverse Universe completely reimagines the original color for something new.



57, 23.517, 20.696



69, 36.108, 21.714



62, 17.480, 256.525



35, 3.910, 18.476



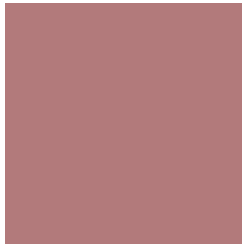
31, 70.268, 38.817



2, 9.160, 18.264

Previews

White Background



This preview shows how the CIELCh color 57, 23.519, 20.691 looks on a white background.

Color Contrast Check

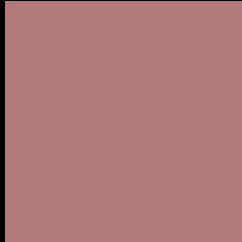
Large Text (above 18pt) WCAG AA ✓ Pass

Any Text WCAG AA ✗ Fail

Large Text (above 18pt) WCAG AAA ✗ Fail

Any Text WCAG AAA ✗ Fail

Black Background



This preview shows how the CIE LCh color 57, 23.519, 20.691 looks on a black background.

Color Contrast Check

Large Text (above 18pt) WCAG AA ✓ Pass

Any Text WCAG AA ✓ Pass

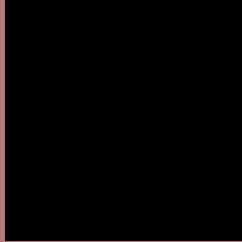
Large Text (above 18pt) WCAG AAA ✓ Pass

Any Text WCAG AAA × Fail

If you want to check with other color combinations, try the [Color Contrast Checker](#).

CIELCh 57, 23.519, 20.691

Background



This preview shows how black text looks on a background with the CIELCh color 57, 23.519, 20.691.



This preview shows how white text looks on a background with the CIELCh color 57, 23.519, 20.691.

Color Blindness Simulation

Color vision deficiency is a very complex topic, and I could not describe the different causes any better than Wikipedia does, so if you want to learn more, you should check out their [article about color blindness](#).

Dichromacy



Original Color

57, 23.519, 20.691

Protanopia

57, 3.751, 84.495

Deuteranopia

57, 11.868, 51.805



Tritanopia
57, 24.324, 10.297

Trichromacy



Original Color
57, 23.519, 20.691

Protanomaly
57, 9.708, 33.765

Deuteranomaly
57, 15.524, 33.490

Tritanomaly
57, 24.263, 12.939

Monochromacy



Original Color
57, 23.519, 20.691

Achromatopsia
58, 0.007, 296.813

Achromatomaly
57, 8.073, 20.197

CSS Examples

Text

The CSS property to change the color of the text to CIELCh 57, 23.519, 20.691 is called "color". The color property can be set on classes, ids or directly on the HTML element.

This example shows how text in the color `rgb(178, 122, 123)` looks like.

```
.text, #text, p{  
    color:rgb(178, 122, 123)  
}
```

If you want to add a text shadow in that color use the text-shadow property, you can generate a text shadow directly with our [CSS Text Shadow Generator](#).

Here you see how black text with a 4 pixel rgb(178, 122, 123) colored shadow looks like.

```
.shadow{ text-shadow: 4px 4px 2px rgb(178, 122, 123) }
```

Border

The CSS property to change the border of an element to CIELCh 57, 23.519, 20.691 is called "border". The border property can be set on classes, ids or directly on the HTML element.

This example shows the color as border, it can be applied via the CSS property "border" or "border-color".

```
.border, #border, table{ border:4px solid rgb(178, 122, 123) }
```

If only the border color should be changed use the property `border-color`.

```
.border{ border-color:rgb(178, 122, 123) }
```

If you want to add a box shadow in that color use:

Here you see how a box with a 4 pixel `rgb(178, 122, 123)` colored shadow looks like.

```
.boxshadow{ -moz-box-shadow:4px 4px 4px  
4px rgb(178, 122, 123); -webkit-box-  
shadow:4px 4px 4px 4px rgb(178, 122, 123);  
box-shadow:4px 4px 4px 4px rgb(178, 122,  
123) }
```

Background

The CSS property to change the background color of an element to CIELCh 57, 23.519, 20.691 is called "background". The background property can be set on classes, ids or directly on the HTML element.

```
.background, #background, body{  
background: rgb(178, 122, 123) }
```

If only the background color should be changed can be used:

```
.background{ background-color: rgb(178,  
122, 123) }
```

This example shows the color as background, it is applied via the CSS property "background".

To optimize and compress your CSS code, you can use our [online CSS compressor and optimizer](#) based on csstidy. If you want to create a linear or radial gradient as background or border, check our [CSS Gradient Generator](#).

Hey! You found this booklet interesting? Support Converting Colors with the new Membership Option!

The pro membership hides all ads, plus gives you double the colors in the color bucket, and more awesome pro features!

[Learn more, Memberships starting at \\$2.50/m!](#)

**Follow me
on Twitter!**

@ConvertingColor