

Converting Colors

CIELCh(57, 26.879, 26.263)

Have a look what the booklet for
CIELCh(57, 26.879, 26.263) contains.

CIELCh(57, 27.014, 25.958)	3
<i>Conversions</i>	4
<i>Details</i>	6
<i>Harmonies</i>	11
<i>Previews</i>	20
<i>Color Blindness Simulation</i>	23
<i>CSS Examples</i>	26

Color

CIELCh(57, 27.014, 25.958)

Conversions

Conversions Part 1

Format	Color
Hex	B77875
RGB	183, 120, 117
RGB Percent	72%, 47%, 46%
CMY	0.2809, 0.5280, 0.5398
CMYK	0.00, 0.34, 0.36, 0.28
HSL	3°, 32%, 59%
HSV	3°, 36%, 72%
XYZ	29.6082, 24.9227, 20.1844
YIQ	138.4950, 38.5110, 12.4230

Conversions

Conversions Part 2

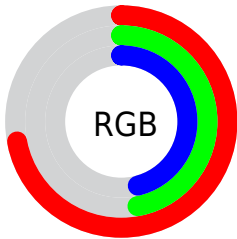
Format	Color
R_{YB}	183, 120, 117
Decimal	12023925
CIE _{Lab}	57.00, 24.29, 11.82
CIE _{LCh}	57, 27.014, 25.958
Yxy	24.9227, 0.3963, 0.3336
Android (android.graphics.Color)	4290214005 (0xFFB77875)
YUV	138.4950, -10.5970, 39.0309
Hunter-Lab	49.9226, 18.5005, 10.9741

Details

The CIELCh color **57, 27.014, 25.958** is a dark color, and the websafe version is hex **996666**. A complement of this color would be **69, 20.920, 202.337**, and the grayscale version is **58, 0.007, 296.813**.

A 20% lighter version of the original color is **77, 27.146, 26.148**, and **37, 26.852, 26.294** is the 20% darker color. If you saturate the color by 10%, you get **53, 35.770, 27.303**, and if you desaturate by 10%, it is **62, 18.774, 24.947**.

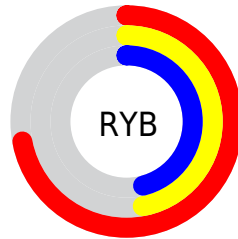
Distribution



Red (72%)

Green (47%)

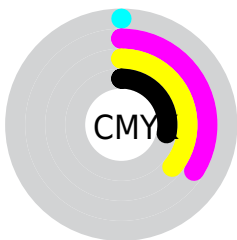
Blue (46%)



Red (72%)

Yellow (47%)

Blue (46%)

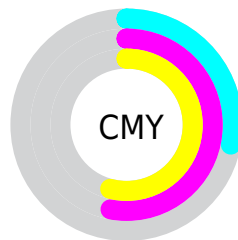


Cyan (0%)

Magenta (34%)

Yellow (36%)

Black (28%)



Cyan (28%)

Magenta (53%)

Yellow (54%)

Brightness & Saturation Gradients

These gradients show how the CIELCh color 57, 27.014, 25.958 changes by changing the brightness by 10 percent. The first figure shows a shift by +10% for each color and the second figure -10%.

Similar to the brightness gradients but the following saturation gradients show a change of the CIELCh color 57, 27.014, 25.958 by changing the saturation by 10% instead.

■ 57, 27.014, 25.958

■ 57, 27.014, 25.958

■ 100, 27.014,
25.958

■ 47, 27.014, 25.958

■ 77, 27.014, 25.958

■ 37, 27.014, 25.958

■ 87, 27.014, 25.958

■ 27, 27.014, 25.958

■ 97, 27.014, 25.958

■ 17, 27.014, 25.958

■ 7, 27.014, 25.958

■ 0, 27.014, 25.958

■ 57, 27.014, 25.958

■ 57, 27.014, 25.958

■ 53, 35.770, 27.303

■ 62, 18.774, 24.947

■ 49, 44.930, 29.057

■ 67, 11.106, 24.173

45, 54.288, 31.294

72, 4.007, 23.526

42, 63.521, 34.005

77, 2.552, 203.440

40, 72.057, 36.943

82, 8.616, 202.985

39, 78.706, 39.387

87, 14.236,
202.731

38, 80.998, 40.483

92, 19.461,
202.553

96, 23.024,
197.998

Harmonies

Complementary

The Complementary color scheme is a pair of colors which are on the opposite of each other on the color wheel.



57, 27.014, 25.958



69, 20.920, 202.337

Rectangle

The Rectangle color scheme consists of four colors that form a rectangle on the color wheel.



57, 27.014, 25.958



57, 27.014, 75.958



57, 27.014, 205.958



57, 27.014, 255.958

Sweetspot

The Sweet Spot groups the original color and five complimentary colors.



57, 27.012, 25.963



87, 9.221, 23.858



58, 42.858, 327.304



46, 6.280, 23.943



97, 0.011, 296.813



50, 0.007, 296.813

Same Dimension

The Same Dimension uses a secret algorithm to generate beautiful new colors.



57, 27.012, 25.963



68, 40.870, 26.960



65, 23.699, 74.351



36, 3.829, 23.743



32, 71.249, 40.257



2, 10.289, 22.277

Inverse Universe

The Inverse Universe completely reimagines the original color for something new.



69, 20.920, 202.337



87, 29.697, 202.241



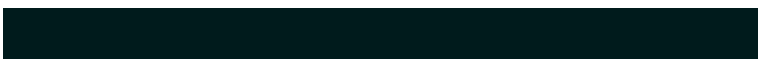
60, 21.886, 264.912



38, 3.609, 203.112



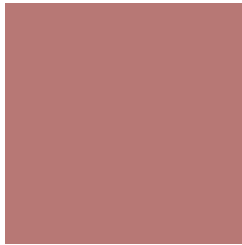
56, 32.610, 203.796



8, 9.792, 204.145

Previews

White Background



This preview shows how the CIELCh color 57, 27.014, 25.958 looks on a white background.

Color Contrast Check

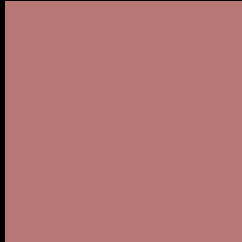
Large Text (above 18pt) WCAG AA ✓ Pass

Any Text WCAG AA ✗ Fail

Large Text (above 18pt) WCAG AAA ✗ Fail

Any Text WCAG AAA ✗ Fail

Black Background



This preview shows how the CIE LCh color 57, 27.014, 25.958 looks on a black background.

Color Contrast Check

Large Text (above 18pt) WCAG AA ✓ Pass

Any Text WCAG AA ✓ Pass

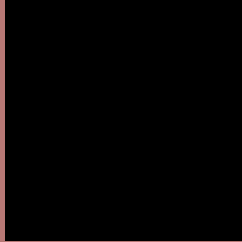
Large Text (above 18pt) WCAG AAA ✓ Pass

Any Text WCAG AAA × Fail

If you want to check with other color combinations, try the [Color Contrast Checker](#).

CIELCh 57, 27.014, 25.958

Background



This preview shows how black text looks on a background with the CIELCh color 57, 27.014, 25.958.



This preview shows how white text looks on a background with the CIELCh color 57, 27.014, 25.958.

Color Blindness Simulation

Color vision deficiency is a very complex topic, and I could not describe the different causes any better than Wikipedia does, so if you want to learn more, you should check out their [article about color blindness](#).

Dichromacy



Original Color

57, 27.014, 25.958

Protanopia

57, 6.556, 91.384

Deuteranopia

57, 14.772, 60.675



Tritanopia
57, 27.275, 12.035

Trichromacy



Original Color
57, 27.014, 25.958

Protanomaly
57, 11.775, 42.957

Deuteranomaly
57, 18.110, 42.835

Tritanomaly
57, 27.294, 16.743

Monochromacy



Original Color
57, 27.014, 25.958

Achromatopsia
58, 0.007, 296.813

Achromatomaly
57, 9.370, 23.790

CSS Examples

Text

The CSS property to change the color of the text to CIELCh 57, 27.014, 25.958 is called "color". The color property can be set on classes, ids or directly on the HTML element.

This example shows how text in the color `rgb(183, 120, 117)` looks like.

```
.text, #text, p{  
    color:rgb(183, 120, 117)  
}
```

If you want to add a text shadow in that color use the text-shadow property, you can generate a text shadow directly with our [CSS Text Shadow Generator](#).

Here you see how black text with a 4 pixel rgb(183, 120, 117) colored shadow looks like.

```
.shadow{ text-shadow: 4px 4px 2px rgb(183, 120, 117) }
```

Border

The CSS property to change the border of an element to CIELCh 57, 27.014, 25.958 is called "border". The border property can be set on classes, ids or directly on the HTML element.

This example shows the color as border, it can be applied via the CSS property "border" or "border-color".

```
.border, #border, table{ border:4px solid rgb(183, 120, 117) }
```

If only the border color should be changed use the property `border-color`.

```
.border{ border-color:rgb(183, 120, 117) }
```

If you want to add a box shadow in that color use:

Here you see how a box with a 4 pixel `rgb(183, 120, 117)` colored shadow looks like.

```
.boxshadow{ -moz-box-shadow:4px 4px 4px  
4px rgb(183, 120, 117); -webkit-box-  
shadow:4px 4px 4px 4px rgb(183, 120, 117);  
box-shadow:4px 4px 4px 4px rgb(183, 120,  
117) }
```

Background

The CSS property to change the background color of an element to CIELCh 57, 27.014, 25.958 is called "background". The background property can be set on classes, ids or directly on the HTML element.

```
.background, #background, body{  
background: rgb(183, 120, 117) }
```

If only the background color should be changed can be used:

```
.background{ background-color: rgb(183,  
120, 117) }
```

This example shows the color as background, it is applied via the CSS property "background".

To optimize and compress your CSS code, you can use our [online CSS compressor and optimizer](#) based on csstidy. If you want to create a linear or radial gradient as background or border, check our [CSS Gradient Generator](#).

Hey! You found this booklet interesting? Support Converting Colors with the new Membership Option!

The pro membership hides all ads, plus gives you double the colors in the color bucket, and more awesome pro features!

[Learn more, Memberships starting at \\$2.50/m!](#)

**Follow me
on Twitter!**

@ConvertingColor