

Converting Colors

CIELCh(57, 57.768, 5.475)

Have a look what the booklet for
CIELCh(57, 57.768, 5.475) contains.

CIELCh(57, 57.761, 5.242)	3
<i>Conversions</i>	4
<i>Details</i>	6
<i>Harmonies</i>	11
<i>Previews</i>	20
<i>Color Blindness Simulation</i>	23
<i>CSS Examples</i>	26

Color

CIELCh(57, 57.761, 5.242)

Conversions

Conversions Part 1

Format	Color
Hex	E35882
RGB	227, 88, 130
RGB Percent	89%, 35%, 51%
CMY	0.1098, 0.6549, 0.4902
CMYK	0.00, 0.61, 0.43, 0.11
HSL	342°, 71%, 62%
HSV	342°, 61%, 89%
XYZ	39.1984, 24.9227, 23.8643
YIQ	134.3490, 69.3620, 42.5300

Conversions

Conversions Part 2

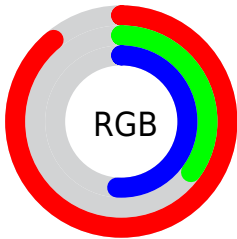
Format	Color
R_{YB}	227, 88, 130
Decimal	14899330
CIE _{Lab}	57.00, 57.52, 5.28
CIE _{LCh}	57, 57.761, 5.242
Yxy	24.9227, 0.4455, 0.2833
Android (android.graphics.Color)	4293089410 (0xFFE35882)
YUV	134.3490, -2.1441, 81.2549
Hunter-Lab	49.9226, 52.7907, 6.6037

Details

The CIELCh color **57, 57.761, 5.242** is a light color, and the websafe version is hex **FF6699**. The color can be described as light muted rose. A complement of this color would be **82, 48.373, 168.743**, and the grayscale version is **56, 0.007, 296.813**.

A 20% lighter version of the original color is **73, 46.290, 357.851**, and **37, 57.728, 5.271** is the 20% darker color. If you saturate the color by 10%, you get **53, 65.648, 8.297**, and if you desaturate by 10%, it is **61, 48.803, 2.832**.

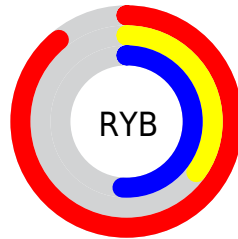
Distribution



Red (89%)

Green (35%)

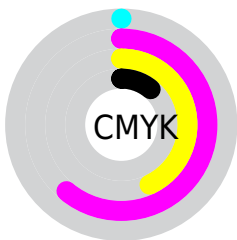
Blue (51%)



Red (89%)

Yellow (35%)

Blue (51%)

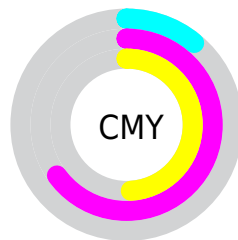


Cyan (0%)

Magenta (61%)

Yellow (43%)

Black (11%)



Cyan (11%)


Magenta (65%)

Yellow (49%)

Brightness & Saturation Gradients

These gradients show how the CIELCh color 57, 57.761, 5.242 changes by changing the brightness by 10 percent. The first figure shows a shift by +10% for each color and the second figure -10%.

Similar to the brightness gradients but the following saturation gradients show a change of the CIELCh color 57, 57.761, 5.242 by changing the saturation by 10% instead.

 57, 57.761, 5.242  57, 57.761, 5.242

 100, 57.761, 5.242  47, 57.761, 5.242

 77, 57.761, 5.242  37, 57.761, 5.242

 87, 57.761, 5.242  27, 57.761, 5.242


 97, 57.761, 5.242  17, 57.761, 5.242

 7, 57.761, 5.242

 0, 57.761, 5.242

 57, 57.761, 5.242  57, 57.761, 5.242

 53, 65.648, 8.297  61, 48.803, 2.832

 51, 72.108, 12.166  66, 39.231, 0.900

49, 77.054, 16.966

72, 29.437,
359.318

48, 80.588, 21.755

77, 19.708,
357.993

83, 10.229,
356.847

89, 1.101, 355.450

96, 7.631, 175.140

98, 9.513, 198.874

Harmonies

Complementary

The Complementary color scheme is a pair of colors which are on the opposite of each other on the color wheel.



57, 57.761, 5.242



82, 48.373, 168.743

Rectangle

The Rectangle color scheme consists of four colors that form a rectangle on the color wheel.



57, 57.761, 5.242



57, 57.761, 55.242



57, 57.761, 185.242



57, 57.761, 235.242

Sweetspot

The Sweet Spot groups the original color and five complimentary colors.



57, 57.758, 5.244



88, 18.260, 357.621



55, 81.441, 317.624



45, 12.756, 357.971



0, 0.000, 0.000



53, 0.007, 296.813

Same Dimension

The Same Dimension uses a secret algorithm to generate beautiful new colors.



57, 57.758, 5.244



59, 73.406, 9.087



61, 54.358, 39.364



45, 5.201, 356.656



37, 66.973, 20.763



7, 26.660, 8.383

Inverse Universe

The Inverse Universe completely reimagines the original color for something new.



57, 57.758, 5.244



59, 73.406, 9.087



76, 33.231, 222.078



45, 5.201, 356.656



37, 66.973, 20.763



7, 26.660, 8.383

Previews

White Background



This preview shows how the CIELCh color 57, 57.761, 5.242 looks on a white background.

Color Contrast Check

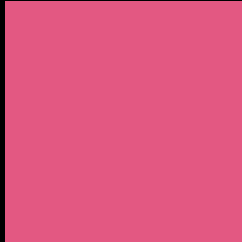
Large Text (above 18pt) WCAG AA ✓ Pass

Any Text WCAG AA ✗ Fail

Large Text (above 18pt) WCAG AAA ✗ Fail

Any Text WCAG AAA ✗ Fail

Black Background



This preview shows how the CIELCh color 57, 57.761, 5.242 looks on a black background.

Color Contrast Check

Large Text (above 18pt) WCAG AA ✓ Pass

Any Text WCAG AA ✓ Pass

Large Text (above 18pt) WCAG AAA ✓ Pass

Any Text WCAG AAA × Fail

If you want to check with other color combinations, try the [Color Contrast Checker](#).

CIELCh 57, 57.761, 5.242

Background



This preview shows how black text looks on a background with the CIELCh color 57, 57.761, 5.242.

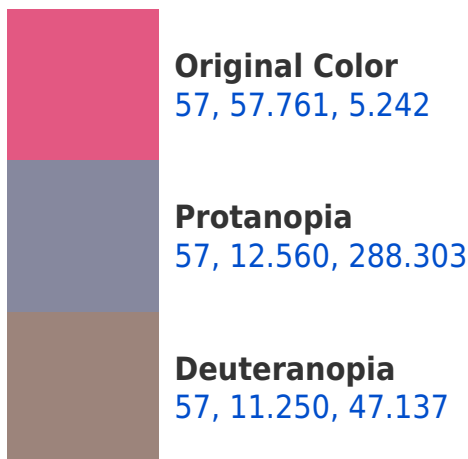


This preview shows how white text looks on a background with the CIELCh color 57, 57.761, 5.242.

Color Blindness Simulation

Color vision deficiency is a very complex topic, and I could not describe the different causes any better than Wikipedia does, so if you want to learn more, you should check out their [article about color blindness](#).

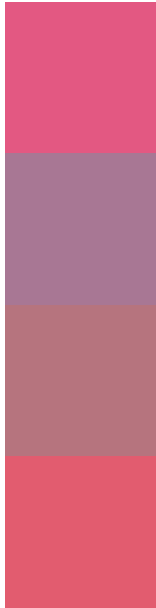
Dichromacy





Tritanopia
57, 56.369, 23.875

Trichromacy



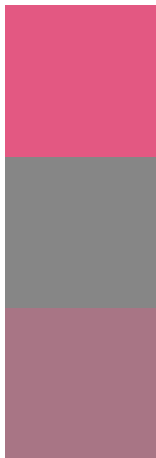
Original Color
57, 57.761, 5.242

Protanomaly
56, 25.132, 341.382

Deuteranomaly
56, 27.829, 11.184

Tritanomaly
57, 56.152, 17.064

Monochromacy



Original Color
57, 57.761, 5.242

Achromatopsia
56, 0.007, 296.813

Achromatomaly
55, 22.458, 358.293

CSS Examples

Text

The CSS property to change the color of the text to CIELCh 57, 57.761, 5.242 is called "color". The color property can be set on classes, ids or directly on the HTML element.

This example shows how text in the color `rgb(227, 88, 130)` looks like.

```
.text, #text, p{  
    color:rgb(227, 88, 130)  
}
```

If you want to add a text shadow in that color use the text-shadow property, you can generate a text shadow directly with our [CSS Text Shadow Generator](#).

Here you see how black text with a 4 pixel rgb(227, 88, 130) colored shadow looks like.

```
.shadow{ text-shadow: 4px 4px 2px rgb(227, 88, 130) }
```

Border

The CSS property to change the border of an element to CIELCh 57, 57.761, 5.242 is called "border". The border property can be set on classes, ids or directly on the HTML element.

This example shows the color as border, it can be applied via the CSS property "border" or "border-color".

```
.border, #border, table{ border:4px solid rgb(227, 88, 130) }
```

If only the border color should be changed use the property `border-color`.

```
.border{ border-color:rgb(227, 88, 130) }
```

If you want to add a box shadow in that color use:

Here you see how a box with a 4 pixel `rgb(227, 88, 130)` colored shadow looks like.

```
.boxshadow{ -moz-box-shadow:4px 4px 4px  
4px rgb(227, 88, 130); -webkit-box-  
shadow:4px 4px 4px 4px rgb(227, 88, 130);  
box-shadow:4px 4px 4px 4px rgb(227, 88,  
130) }
```

Background

The CSS property to change the background color of an element to CIELCh 57, 57.761, 5.242 is called "background". The background property can be set on classes, ids or directly on the HTML element.

```
.background, #background, body{  
background: rgb(227, 88, 130) }
```

If only the background color should be changed can be used:

```
.background{ background-color: rgb(227, 88,  
130) }
```

This example shows the color as background, it is applied via the CSS property "background".

To optimize and compress your CSS code, you can use our [online CSS compressor and optimizer](#) based on csstidy. If you want to create a linear or radial gradient as background or border, check our [CSS Gradient Generator](#).

Hey! You found this booklet interesting? Support Converting Colors with the new Membership Option!

The pro membership hides all ads, plus gives you double the colors in the color bucket, and more awesome pro features!

[Learn more, Memberships starting at \\$2.50/m!](#)

**Follow me
on Twitter!**

@ConvertingColor