

Converting Colors

CIELCh(57, 63.042, 18.127)

Have a look what the booklet for
CIELCh(57, 63.042, 18.127) contains.

CIELCh(57, 63.140, 18.024)	3
<i>Conversions</i>	4
<i>Details</i>	6
<i>Harmonies</i>	11
<i>Previews</i>	20
<i>Color Blindness Simulation</i>	23
<i>CSS Examples</i>	26

Color

CIELCh(57, 63.140, 18.024)

Conversions

Conversions Part 1

Format	Color
Hex	EB536A
RGB	235, 83, 106
RGB Percent	92%, 33%, 42%
CMY	0.0780, 0.6741, 0.5840
CMYK	0.00, 0.65, 0.55, 0.08
HSL	351°, 79%, 62%
HSV	351°, 65%, 92%
XYZ	40.0007, 24.9227, 16.3600
YIQ	131.0700, 83.2090, 39.3770

Conversions

Conversions Part 2

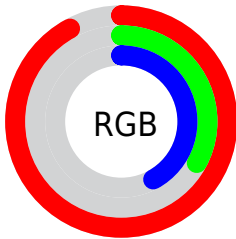
Format	Color
R _Y B	235, 83, 106
Decimal	15422314
CIE Lab	57.00, 60.04, 19.54
CIE LCh	57, 63.140, 18.024
Yxy	24.9227, 0.4921, 0.3066
Android (android.graphics.Color)	4293612394 (0xFFEB536A)
YUV	131.0700, -12.3595, 91.1466
Hunter-Lab	49.9226, 55.6594, 15.5161

Details

The CIELCh color **57, 63.140, 18.024** is a dark color, and the websafe version is hex **FF6666**. The color can be described as middle muted rose. A complement of this color would be **85, 45.194, 180.808**, and the grayscale version is **55, 0.007, 296.813**.

A 20% lighter version of the original color is **71, 46.369, 13.235**, and **37, 63.073, 18.051** is the 20% darker color. If you saturate the color by 10%, you get **54, 72.342, 21.677**, and if you desaturate by 10%, it is **61, 53.209, 15.129**.

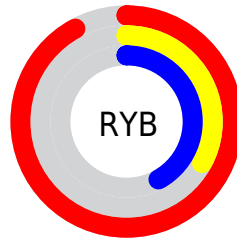
Distribution



Red (92%)

Green (33%)

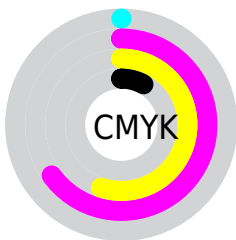
Blue (42%)



Red (92%)

Yellow (33%)

Blue (42%)

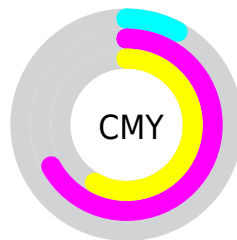


Cyan (0%)

Magenta (65%)

Yellow (55%)

Black (8%)



Cyan (8%)

Magenta (67%)

Yellow (58%)


Brightness & Saturation Gradients

These gradients show how the CIELCh color 57, 63.140, 18.024 changes by changing the brightness by 10 percent. The first figure shows a shift by +10% for each color and the second figure -10%.

Similar to the brightness gradients but the following saturation gradients show a change of the CIELCh color 57, 63.140, 18.024 by changing the saturation by 10% instead.

 57, 63.140, 18.024

 57, 63.140, 18.024

 100, 63.140,
18.024

 47, 63.140, 18.024

 77, 63.140, 18.024

 37, 63.140, 18.024

 87, 63.140, 18.024

 27, 63.140, 18.024

 97, 63.140, 18.024

 17, 63.140, 18.024

 7, 63.140, 18.024

 0, 63.140, 18.024

 57, 63.140, 18.024

 57, 63.140, 18.024

 54, 72.342, 21.677

 61, 53.209, 15.129

 51, 80.552, 26.120

 66, 42.935, 12.849

50, 87.638, 31.123

72, 32.667, 11.042

49, 91.042, 33.692

78, 22.668, 9.588

84, 13.099, 8.388

90, 4.039, 7.304

97, 4.494, 186.751

99, 6.817, 199.071

Harmonies

Complementary

The Complementary color scheme is a pair of colors which are on the opposite of each other on the color wheel.



57, 63.140, 18.024



85, 45.194, 180.808

Rectangle

The Rectangle color scheme consists of four colors that form a rectangle on the color wheel.



57, 63.140, 18.024



57, 63.140, 68.024



57, 63.140, 198.024



57, 63.140, 248.024

Sweetspot

The Sweet Spot groups the original color and five complimentary colors.



57, 63.137, 18.026



87, 18.376, 8.894



58, 88.415, 322.346



45, 12.749, 9.244



0, 0.000, 0.000



53, 0.007, 296.813

Same Dimension

The Same Dimension uses a secret algorithm to generate beautiful new colors.



57, 63.137, 18.026



57, 80.285, 23.230



66, 55.642, 51.709



46, 4.993, 7.831



38, 74.164, 32.792



7, 28.010, 16.499

Inverse Universe

The Inverse Universe completely reimagines the original color for something new.



57, 63.137, 18.026



57, 80.285, 23.230



71, 36.828, 247.302



46, 4.993, 7.831



38, 74.164, 32.792



7, 28.010, 16.499

Previews

White Background



This preview shows how the CIELCh color 57, 63.140, 18.024 looks on a white background.

Color Contrast Check

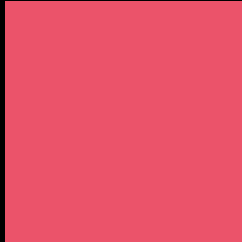
Large Text (above 18pt) WCAG AA ✓ Pass

Any Text WCAG AA ✗ Fail

Large Text (above 18pt) WCAG AAA ✗ Fail

Any Text WCAG AAA ✗ Fail

Black Background



This preview shows how the CIELCh color 57, 63.140, 18.024 looks on a black background.

Color Contrast Check

Large Text (above 18pt) WCAG AA ✓ Pass

Any Text WCAG AA ✓ Pass

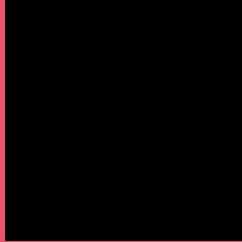
Large Text (above 18pt) WCAG AAA ✓ Pass

Any Text WCAG AAA × Fail

If you want to check with other color combinations, try the [Color Contrast Checker](#).

CIELCh 57, 63.140, 18.024

Background



This preview shows how black text looks on a background with the CIELCh color 57, 63.140, 18.024.

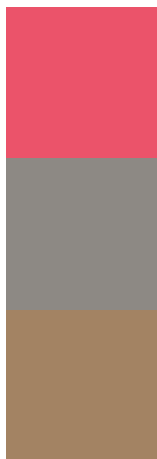


This preview shows how white text looks on a background with the CIELCh color 57, 63.140, 18.024.

Color Blindness Simulation

Color vision deficiency is a very complex topic, and I could not describe the different causes any better than Wikipedia does, so if you want to learn more, you should check out their [article about color blindness](#).

Dichromacy



Original Color

57, 63.140, 18.024

Protanopia

57, 3.244, 80.335

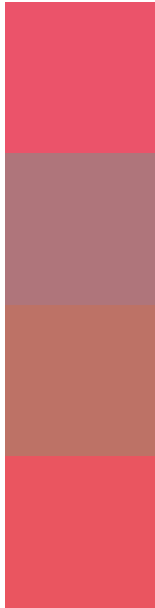
Deuteranopia

57, 23.263, 70.613



Tritanopia
57, 64.017, 26.198

Trichromacy



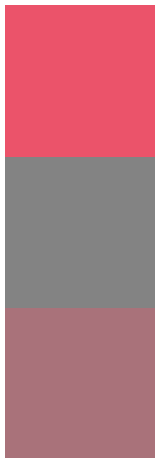
Original Color
57, 63.140, 18.024

Protanomaly
55, 24.401, 14.365

Deuteranomaly
56, 34.192, 34.312

Tritanomaly
57, 63.441, 23.481

Monochromacy



Original Color
57, 63.140, 18.024

Achromatopsia
55, 0.007, 296.813

Achromatomaly
54, 23.291, 11.041

CSS Examples

Text

The CSS property to change the color of the text to CIELCh 57, 63.140, 18.024 is called "color". The color property can be set on classes, ids or directly on the HTML element.

This example shows how text in the color `rgb(235, 83, 106)` looks like.

```
.text, #text, p{  
    color:rgb(235, 83, 106)  
}
```

If you want to add a text shadow in that color use the text-shadow property, you can generate a text shadow directly with our [CSS Text Shadow Generator](#).

Here you see how black text with a 4 pixel rgb(235, 83, 106) colored shadow looks like.

```
.shadow{ text-shadow: 4px 4px 2px rgb(235, 83, 106) }
```

Border

The CSS property to change the border of an element to CIELCh 57, 63.140, 18.024 is called "border". The border property can be set on classes, ids or directly on the HTML element.

This example shows the color as border, it can be applied via the CSS property "border" or "border-color".

```
.border, #border, table{ border:4px solid rgb(235, 83, 106) }
```

If only the border color should be changed use the property `border-color`.

```
.border{ border-color:rgb(235, 83, 106) }
```

If you want to add a box shadow in that color use:

Here you see how a box with a 4 pixel `rgb(235, 83, 106)` colored shadow looks like.

```
.boxshadow{ -moz-box-shadow:4px 4px 4px  
4px rgb(235, 83, 106); -webkit-box-  
shadow:4px 4px 4px 4px rgb(235, 83, 106);  
box-shadow:4px 4px 4px 4px rgb(235, 83,  
106) }
```

Background

The CSS property to change the background color of an element to CIELCh 57, 63.140, 18.024 is called "background". The background property can be set on classes, ids or directly on the HTML element.

```
.background, #background, body{  
background: rgb(235, 83, 106) }
```

If only the background color should be changed can be used:

```
.background{ background-color: rgb(235, 83,  
106) }
```

This example shows the color as background, it is applied via the CSS property "background".

To optimize and compress your CSS code, you can use our [online CSS compressor and optimizer](#) based on csstidy. If you want to create a linear or radial gradient as background or border, check our [CSS Gradient Generator](#).

Hey! You found this booklet interesting? Support Converting Colors with the new Membership Option!

The pro membership hides all ads, plus gives you double the colors in the color bucket, and more awesome pro features!

[Learn more, Memberships starting at \\$2.50/m!](#)

**Follow me
on Twitter!**

@ConvertingColor