

Converting Colors

CIELCh(57, 63.297, 9.145)

Have a look what the booklet for
CIELCh(57, 63.297, 9.145) contains.

CIELCh(57, 63.327, 9.089)	3
<i>Conversions</i>	4
<i>Details</i>	6
<i>Harmonies</i>	11
<i>Previews</i>	20
<i>Color Blindness Simulation</i>	23
<i>CSS Examples</i>	26

Color

CIELCh(57, 63.327, 9.089)

Conversions

Conversions Part 1

Format	Color
Hex	EB507A
RGB	235, 80, 122
RGB Percent	92%, 31%, 48%
CMY	0.0770, 0.6849, 0.5204
CMYK	0.00, 0.66, 0.48, 0.08
HSL	344°, 80%, 62%
HSV	344°, 66%, 92%
XYZ	40.8036, 24.9227, 21.1667
YIQ	131.1330, 78.8980, 45.9220

Conversions

Conversions Part 2

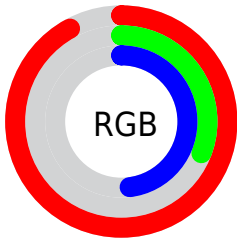
Format	Color
R_{YB}	235, 80, 122
Decimal	15421562
CIE _{Lab}	57.00, 62.53, 10.00
CIE _{LCh}	57, 63.327, 9.089
Yxy	24.9227, 0.4696, 0.2868
Android (android.graphics.Color)	4293611642 (0xFFEB507A)
YUV	131.1330, -4.5026, 91.0914
Hunter-Lab	49.9226, 58.5302, 9.8075

Details

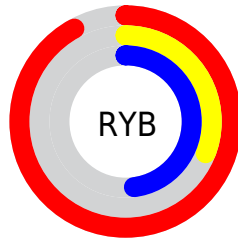
The CIELCh color **57, 63.327, 9.089** is a dark color, and the websafe version is hex **CC3366**. The color can be described as middle muted rose. A complement of this color would be **85, 51.005, 170.364**, and the grayscale version is **55, 0.007, 296.813**.

A 20% lighter version of the original color is **71, 48.622, 1.049**, and **37, 63.342, 9.036** is the 20% darker color. If you saturate the color by 10%, you get **54, 71.070, 12.637**, and if you desaturate by 10%, it is **61, 54.387, 6.296**.

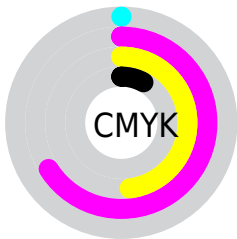
Distribution



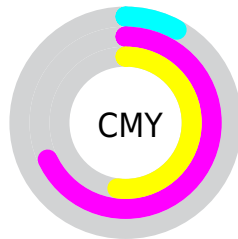
- Red (92%)
- Green (31%)
- Blue (48%)



- Red (92%)
- Yellow (31%)
- Blue (48%)



- Cyan (0%)
- Magenta (66%)
- Yellow (48%)
- Black (8%)



- Cyan (8%)
- Magenta (68%)
- Yellow (52%)

Brightness & Saturation Gradients

These gradients show how the CIELCh color 57, 63.327, 9.089 changes by changing the brightness by 10 percent. The first figure shows a shift by +10% for each color and the second figure -10%.

Similar to the brightness gradients but the following saturation gradients show a change of the CIELCh color 57, 63.327, 9.089 by changing the saturation by 10% instead.

 57, 63.327, 9.089

 57, 63.327, 9.089

 100, 63.327, 9.089

 47, 63.327, 9.089

 77, 63.327, 9.089

 37, 63.327, 9.089

 87, 63.327, 9.089

 27, 63.327, 9.089

 97, 63.327, 9.089

 17, 63.327, 9.089

 7, 63.327, 9.089

 0, 63.327, 9.089

 57, 63.327, 9.089

 57, 63.327, 9.089

 54, 71.070, 12.637

 61, 54.387, 6.296

 51, 77.379, 17.078

 66, 44.688, 4.082

50, 82.368, 22.401

71, 34.652, 2.299

50, 84.313, 24.683

77, 24.616, 0.831

83, 14.806,
359.591

89, 5.353, 358.479

96, 3.682, 177.822

99, 6.731, 199.078

Harmonies

Complementary

The Complementary color scheme is a pair of colors which are on the opposite of each other on the color wheel.



57, 63.327, 9.089



85, 51.005, 170.364

Rectangle

The Rectangle color scheme consists of four colors that form a rectangle on the color wheel.



57, 63.327, 9.089



57, 63.327, 59.089



57, 63.327, 189.089



57, 63.327, 239.089

Sweetspot

The Sweet Spot groups the original color and five complimentary colors.



57, 63.323, 9.091



87, 20.097, 0.092



55, 89.360, 318.728



44, 13.786, 0.445



0, 0.000, 0.000



53, 0.007, 296.813

Same Dimension

The Same Dimension uses a secret algorithm to generate beautiful new colors.



57, 63.323, 9.091



57, 78.026, 14.078



62, 60.049, 42.243



46, 5.216, 358.878



38, 68.799, 23.627



7, 27.811, 11.007

Inverse Universe

The Inverse Universe completely reimagines the original color for something new.



57, 63.323, 9.091



57, 78.026, 14.078



76, 35.494, 228.454



46, 5.216, 358.878



38, 68.799, 23.627



7, 27.811, 11.007

Previews

White Background



This preview shows how the CIELCh color 57, 63.327, 9.089 looks on a white background.

Color Contrast Check

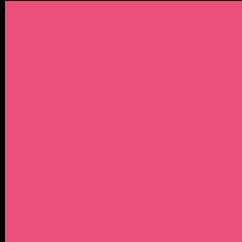
Large Text (above 18pt) WCAG AA ✓ Pass

Any Text WCAG AA ✗ Fail

Large Text (above 18pt) WCAG AAA ✗ Fail

Any Text WCAG AAA ✗ Fail

Black Background



This preview shows how the CIELCh color 57, 63.327, 9.089 looks on a black background.

Color Contrast Check

Large Text (above 18pt) WCAG AA ✓ Pass

Any Text WCAG AA ✓ Pass

Large Text (above 18pt) WCAG AAA ✓ Pass

Any Text WCAG AAA × Fail

If you want to check with other color combinations, try the [Color Contrast Checker](#).

CIELCh 57, 63.327, 9.089

Background



This preview shows how black text looks on a background with the CIELCh color 57, 63.327, 9.089.

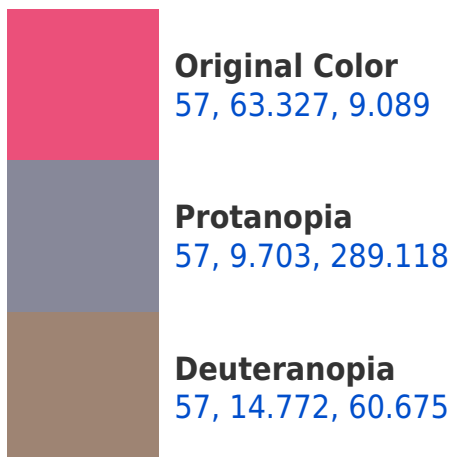


This preview shows how white text looks on a background with the CIELCh color 57, 63.327, 9.089.

Color Blindness Simulation

Color vision deficiency is a very complex topic, and I could not describe the different causes any better than Wikipedia does, so if you want to learn more, you should check out their [article about color blindness](#).

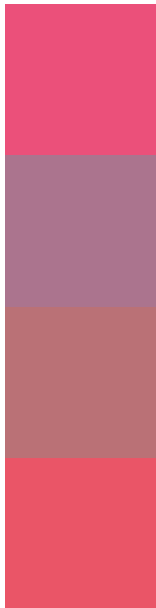
Dichromacy





Tritanopia
57, 63.138, 25.986

Trichromacy



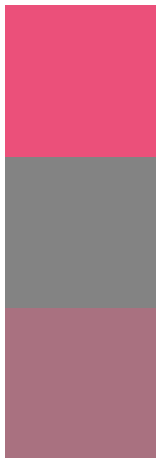
Original Color
57, 63.327, 9.089

Protanomaly
55, 26.138, 348.224

Deuteranomaly
56, 30.959, 18.015

Tritanomaly
57, 62.452, 20.010

Monochromacy



Original Color
57, 63.327, 9.089

Achromatopsia
55, 0.007, 296.813

Achromatomaly
54, 24.328, 1.960

CSS Examples

Text

The CSS property to change the color of the text to CIELCh 57, 63.327, 9.089 is called "color". The color property can be set on classes, ids or directly on the HTML element.

This example shows how text in the color `rgb(235, 80, 122)` looks like.

```
.text, #text, p{  
    color:rgb(235, 80, 122)  
}
```

If you want to add a text shadow in that color use the text-shadow property, you can generate a text shadow directly with our [CSS Text Shadow Generator](#).

Here you see how black text with a 4 pixel rgb(235, 80, 122) colored shadow looks like.

```
.shadow{ text-shadow: 4px 4px 2px rgb(235, 80, 122) }
```

Border

The CSS property to change the border of an element to CIELCh 57, 63.327, 9.089 is called "border". The border property can be set on classes, ids or directly on the HTML element.

This example shows the color as border, it can be applied via the CSS property "border" or "border-color".

```
.border, #border, table{ border:4px solid rgb(235, 80, 122) }
```

If only the border color should be changed use the property `border-color`.

```
.border{ border-color:rgb(235, 80, 122) }
```

If you want to add a box shadow in that color use:

Here you see how a box with a 4 pixel `rgb(235, 80, 122)` colored shadow looks like.

```
.boxshadow{ -moz-box-shadow:4px 4px 4px  
4px rgb(235, 80, 122); -webkit-box-  
shadow:4px 4px 4px 4px rgb(235, 80, 122);  
box-shadow:4px 4px 4px 4px rgb(235, 80,  
122) }
```

Background

The CSS property to change the background color of an element to CIELCh 57, 63.327, 9.089 is called "background". The background property can be set on classes, ids or directly on the HTML element.

```
.background, #background, body{  
background: rgb(235, 80, 122) }
```

If only the background color should be changed can be used:

```
.background{ background-color: rgb(235, 80,  
122) }
```

This example shows the color as background, it is applied via the CSS property "background".

To optimize and compress your CSS code, you can use our [online CSS compressor and optimizer](#) based on csstidy. If you want to create a linear or radial gradient as background or border, check our [CSS Gradient Generator](#).

Hey! You found this booklet interesting? Support Converting Colors with the new Membership Option!

The pro membership hides all ads, plus gives you double the colors in the color bucket, and more awesome pro features!

[Learn more, Memberships starting at \\$2.50/m!](#)

**Follow me
on Twitter!**

@ConvertingColor