

Converting Colors

CIELCh(57, 63.951, 9.211)

Have a look what the booklet for
CIELCh(57, 63.951, 9.211) contains.

CIELCh(57, 64.018, 9.043)	3
<i>Conversions</i>	4
<i>Details</i>	6
<i>Harmonies</i>	11
<i>Previews</i>	20
<i>Color Blindness Simulation</i>	23
<i>CSS Examples</i>	26

Color

CIELCh(57, 64.018, 9.043)

Conversions

Conversions Part 1

Format	Color
Hex	EC4F7A
RGB	236, 79, 122
RGB Percent	93%, 31%, 48%
CMY	0.0734, 0.6891, 0.5207
CMYK	0.00, 0.66, 0.48, 0.07
HSL	344°, 81%, 62%
HSV	344°, 66%, 93%
XYZ	41.0281, 24.9227, 21.1347
YIQ	130.8450, 79.7690, 46.6570

Conversions

Conversions Part 2

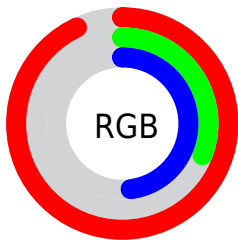
Format	Color
R_{YB}	236, 79, 122
Decimal	15486842
CIE _{Lab}	57.00, 63.22, 10.06
CIE _{LCh}	57, 64.018, 9.043
Yxy	24.9227, 0.4711, 0.2862
Android (android.graphics.Color)	4293676922 (0xFFEC4F7A)
YUV	130.8450, -4.3606, 92.2209
Hunter-Lab	49.9226, 59.3328, 9.8455

Details

The CIELCh color **57, 64.018, 9.043** is a dark color, and the websafe version is hex **CC3366**. The color can be described as middle muted rose. A complement of this color would be **85, 51.633, 170.038**, and the grayscale version is **55, 0.007, 296.813**.

A 20% lighter version of the original color is **71, 48.622, 1.049**, and **37, 63.734, 9.228** is the 20% darker color. If you saturate the color by 10%, you get **54, 71.673, 12.633**, and if you desaturate by 10%, it is **61, 55.129, 6.218**.

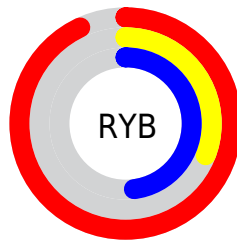
Distribution



Red (93%)

Green (31%)

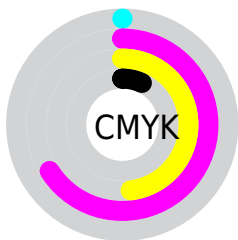
Blue (48%)



Red (93%)

Yellow (31%)

Blue (48%)

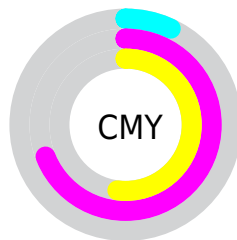


Cyan (0%)

Magenta (66%)

Yellow (48%)

Black (7%)



Cyan (7%)

Magenta (69%)


Yellow (52%)

Brightness & Saturation Gradients

These gradients show how the CIELCh color 57, 64.018, 9.043 changes by changing the brightness by 10 percent. The first figure shows a shift by +10% for each color and the second figure -10%.

Similar to the brightness gradients but the following saturation gradients show a change of the CIELCh color 57, 64.018, 9.043 by changing the saturation by 10% instead.

 57, 64.018, 9.043  57, 64.018, 9.043

 100, 64.018, 9.043  47, 64.018, 9.043

 77, 64.018, 9.043  37, 64.018, 9.043


 87, 64.018, 9.043  27, 64.018, 9.043

 97, 64.018, 9.043  17, 64.018, 9.043

 7, 64.018, 9.043

 0, 64.018, 9.043

 57, 64.018, 9.043  57, 64.018, 9.043

 54, 71.673, 12.633  61, 55.129, 6.218

 51, 77.873, 17.120  66, 45.442, 3.979

50, 82.761, 22.484

71, 35.386, 2.177

50, 84.425, 24.438

77, 25.308, 0.696

83, 15.442,
359.446

89, 5.924, 358.333

96, 3.179, 177.683

99, 6.420, 199.102

Harmonies

Complementary

The Complementary color scheme is a pair of colors which are on the opposite of each other on the color wheel.



57, 64.018, 9.043



85, 51.633, 170.038

Rectangle

The Rectangle color scheme consists of four colors that form a rectangle on the color wheel.



57, 64.018, 9.043



57, 64.018, 59.043



57, 64.018, 189.043



57, 64.018, 239.043

Sweetspot

The Sweet Spot groups the original color and five complimentary colors.



57, 64.014, 9.045



87, 20.121, 359.878



55, 90.295, 318.736



44, 13.802, 0.230



0, 0.000, 0.000



53, 0.007, 296.813

Same Dimension

The Same Dimension uses a secret algorithm to generate beautiful new colors.



57, 64.014, 9.045



57, 78.666, 14.264



62, 60.897, 42.287



46, 5.224, 358.665



38, 68.688, 23.367



7, 27.809, 10.846

Inverse Universe

The Inverse Universe completely reimagines the original color for something new.



57, 64.014, 9.045



57, 78.666, 14.264



76, 35.786, 228.593



46, 5.224, 358.665



38, 68.688, 23.367



7, 27.809, 10.846

Previews

White Background



This preview shows how the CIELCh color 57, 64.018, 9.043 looks on a white background.

Color Contrast Check

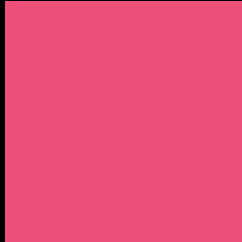
Large Text (above 18pt) WCAG AA ✓ Pass

Any Text WCAG AA ✗ Fail

Large Text (above 18pt) WCAG AAA ✗ Fail

Any Text WCAG AAA ✗ Fail

Black Background



This preview shows how the CIELCh color 57, 64.018, 9.043 looks on a black background.

Color Contrast Check

Large Text (above 18pt) WCAG AA ✓ Pass

Any Text WCAG AA ✓ Pass

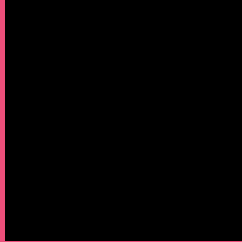
Large Text (above 18pt) WCAG AAA ✓ Pass

Any Text WCAG AAA × Fail

If you want to check with other color combinations, try the [Color Contrast Checker](#).

CIELCh 57, 64.018, 9.043

Background



This preview shows how black text looks on a background with the CIELCh color 57, 64.018, 9.043.



This preview shows how white text looks on a background with the CIELCh color 57, 64.018, 9.043.

Color Blindness Simulation

Color vision deficiency is a very complex topic, and I could not describe the different causes any better than Wikipedia does, so if you want to learn more, you should check out their [article about color blindness](#).

Dichromacy



Original Color

57, 64.018, 9.043

Protanopia

57, 9.703, 289.118

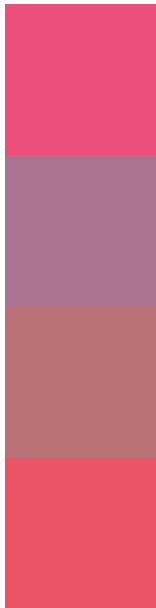
Deuteranopia

57, 14.772, 60.675



Tritanopia
57, 64.017, 26.198

Trichromacy



Original Color
57, 64.018, 9.043

Protanomaly
55, 27.082, 348.284

Deuteranomaly
56, 30.959, 18.015

Tritanomaly
57, 63.278, 20.321

Monochromacy



Original Color
57, 64.018, 9.043

Achromatopsia
55, 0.007, 296.813

Achromatomaly
54, 24.883, 1.119

CSS Examples

Text

The CSS property to change the color of the text to CIELCh 57, 64.018, 9.043 is called "color". The color property can be set on classes, ids or directly on the HTML element.

This example shows how text in the color `rgb(236, 79, 122)` looks like.

```
.text, #text, p{  
    color:rgb(236, 79, 122)  
}
```

If you want to add a text shadow in that color use the text-shadow property, you can generate a text shadow directly with our [CSS Text Shadow Generator](#).

Here you see how black text with a 4 pixel rgb(236, 79, 122) colored shadow looks like.

```
.shadow{ text-shadow: 4px 4px 2px rgb(236, 79, 122) }
```

Border

The CSS property to change the border of an element to CIELCh 57, 64.018, 9.043 is called "border". The border property can be set on classes, ids or directly on the HTML element.

This example shows the color as border, it can be applied via the CSS property "border" or "border-color".

```
.border, #border, table{ border:4px solid rgb(236, 79, 122) }
```

If only the border color should be changed use the property `border-color`.

```
.border{ border-color:rgb(236, 79, 122) }
```

If you want to add a box shadow in that color use:

Here you see how a box with a 4 pixel `rgb(236, 79, 122)` colored shadow looks like.

```
.boxshadow{ -moz-box-shadow:4px 4px 4px  
4px rgb(236, 79, 122); -webkit-box-  
shadow:4px 4px 4px 4px rgb(236, 79, 122);  
box-shadow:4px 4px 4px 4px rgb(236, 79,  
122) }
```

Background

The CSS property to change the background color of an element to CIELCh 57, 64.018, 9.043 is called "background". The background property can be set on classes, ids or directly on the HTML element.

```
.background, #background, body{  
background: rgb(236, 79, 122) }
```

If only the background color should be changed can be used:

```
.background{ background-color: rgb(236, 79,  
122) }
```

This example shows the color as background, it is applied via the CSS property "background".

To optimize and compress your CSS code, you can use our [online CSS compressor and optimizer](#) based on csstidy. If you want to create a linear or radial gradient as background or border, check our [CSS Gradient Generator](#).

Hey! You found this booklet interesting? Support Converting Colors with the new Membership Option!

The pro membership hides all ads, plus gives you double the colors in the color bucket, and more awesome pro features!

[Learn more, Memberships starting at \\$2.50/m!](#)

**Follow me
on Twitter!**

@ConvertingColor