

Converting Colors

CIELCh(57, 67.745, 9.074)

Have a look what the booklet for
CIELCh(57, 67.745, 9.074) contains.

CIELCh(57, 67.701, 9.176)	3
<i>Conversions</i>	4
<i>Details</i>	6
<i>Harmonies</i>	11
<i>Previews</i>	20
<i>Color Blindness Simulation</i>	23
<i>CSS Examples</i>	26

Color

CIELCh(57, 67.701, 9.176)

Conversions

Conversions Part 1

Format	Color
Hex	F14979
RGB	241, 73, 121
RGB Percent	95%, 29%, 47%
CMY	0.0540, 0.7128, 0.5247
CMYK	0.00, 0.70, 0.50, 0.05
HSL	343°, 86%, 62%
HSV	343°, 70%, 95%
XYZ	42.2160, 24.9227, 20.7353
YIQ	128.7040, 84.7200, 50.5440

Conversions

Conversions Part 2

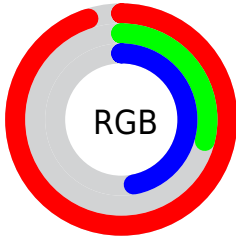
Format	Color
R_{YB}	241, 73, 121
Decimal	15812985
CIE _{Lab}	57.00, 66.83, 10.80
CIE _{LCh}	57, 67.701, 9.176
Yxy	24.9227, 0.4804, 0.2836
Android (android.graphics.Color)	4294003065 (0xFFFF14979)
YUV	128.7040, -3.7981, 98.4836
Hunter-Lab	49.9226, 63.5802, 10.3198

Details

The CIELCh color **57, 67.701, 9.176** is a dark color, and the websafe version is hex **CC3366**. The color can be described as middle washed rose. A complement of this color would be **86, 54.855, 168.597**, and the grayscale version is **54, 0.007, 296.813**.

A 20% lighter version of the original color is **70, 50.950, 0.002**, and **38, 64.932, 10.780** is the 20% darker color. If you saturate the color by 10%, you get **54, 74.878, 13.010**, and if you desaturate by 10%, it is **61, 59.113, 6.155**.

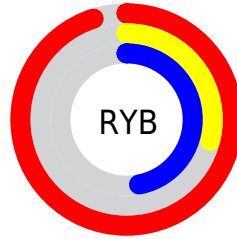
Distribution



Red (95%)

Green (29%)

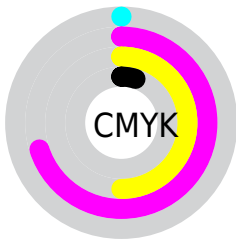
Blue (47%)



Red (95%)

Yellow (29%)

Blue (47%)

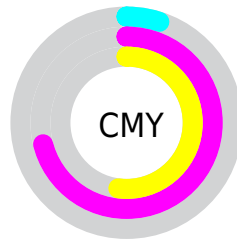


Cyan (0%)

Magenta (70%)

Yellow (50%)

Black (5%)



Cyan (5%)

Magenta (71%)

Yellow (52%)

Brightness & Saturation Gradients

These gradients show how the CIELCh color 57, 67.701, 9.176 changes by changing the brightness by 10 percent. The first figure shows a shift by +10% for each color and the second figure -10%.


Similar to the brightness gradients but the following saturation gradients show a change of the CIELCh color 57, 67.701, 9.176 by changing the saturation by 10% instead.

 57, 67.701, 9.176  57, 67.701, 9.176

 100, 67.701, 9.176  47, 67.701, 9.176


 77, 67.701, 9.176  37, 67.701, 9.176

 87, 67.701, 9.176  27, 67.701, 9.176


 97, 67.701, 9.176  17, 67.701, 9.176

 7, 67.701, 9.176

 0, 67.701, 9.176

 57, 67.701, 9.176  57, 67.701, 9.176

 54, 74.878, 13.010  61, 59.113, 6.155

 52, 80.521, 17.769  66, 49.525, 3.769

51, 85.060, 23.276

71, 39.394, 1.857

51, 85.229, 23.472

77, 29.113, 0.294

83, 18.964,
358.984

89, 9.119, 357.846

95, 0.329, 178.638

99, 4.743, 199.244

Harmonies

Complementary

The Complementary color scheme is a pair of colors which are on the opposite of each other on the color wheel.



57, 67.701, 9.176



86, 54.855, 168.597

Rectangle

The Rectangle color scheme consists of four colors that form a rectangle on the color wheel.



57, 67.701, 9.176



57, 67.701, 59.176



57, 67.701, 189.176



57, 67.701, 239.176

Sweetspot

The Sweet Spot groups the original color and five complimentary colors.



57, 67.697, 9.178



86, 21.269, 359.158



54, 95.295, 318.253



44, 14.468, 359.508



0, 0.000, 0.000



53, 0.007, 296.813

Same Dimension

The Same Dimension uses a secret algorithm to generate beautiful new colors.



57, 67.697, 9.178



56, 80.997, 15.088



61, 66.163, 41.394



47, 5.347, 357.828



39, 69.000, 22.389



8, 28.801, 11.162

Inverse Universe

The Inverse Universe completely reimagines the original color for something new.



57, 67.697, 9.178



56, 80.997, 15.088



78, 37.345, 226.523



47, 5.347, 357.828



39, 69.000, 22.389



8, 28.801, 11.162

Previews

White Background



This preview shows how the CIELCh color 57, 67.701, 9.176 looks on a white background.

Color Contrast Check

Large Text (above 18pt) WCAG AA ✓ Pass

Any Text WCAG AA ✗ Fail

Large Text (above 18pt) WCAG AAA ✗ Fail

Any Text WCAG AAA ✗ Fail

Black Background



This preview shows how the CIELCh color 57, 67.701, 9.176 looks on a black background.

Color Contrast Check

Large Text (above 18pt) WCAG AA ✓ Pass

Any Text WCAG AA ✓ Pass

Large Text (above 18pt) WCAG AAA ✓ Pass

Any Text WCAG AAA × Fail

If you want to check with other color combinations, try the [Color Contrast Checker](#).

CIELCh 57, 67.701, 9.176

Background



This preview shows how black text looks on a background with the CIELCh color 57, 67.701, 9.176.

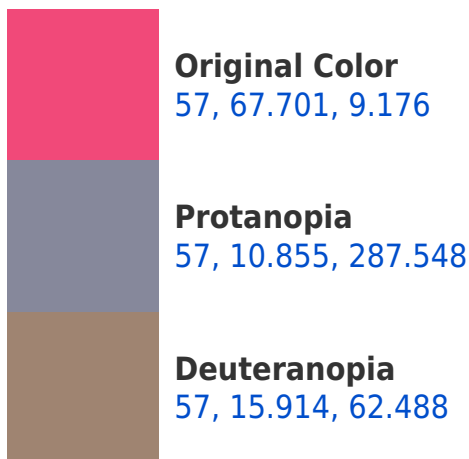


This preview shows how white text looks on a background with the CIELCh color 57, 67.701, 9.176.

Color Blindness Simulation

Color vision deficiency is a very complex topic, and I could not describe the different causes any better than Wikipedia does, so if you want to learn more, you should check out their [article about color blindness](#).

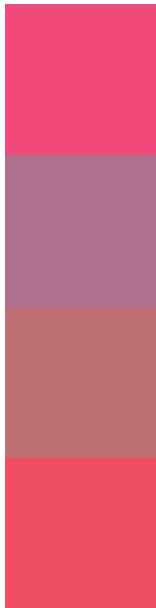
Dichromacy





Tritanopia
57, 68.585, 27.694

Trichromacy



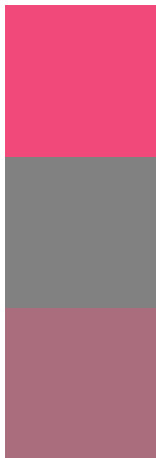
Original Color
57, 67.701, 9.176

Protanomaly
55, 28.916, 346.923

Deuteranomaly
56, 33.188, 18.699

Tritanomaly
57, 67.534, 21.114

Monochromacy



Original Color
57, 67.701, 9.176

Achromatopsia
54, 0.007, 296.813

Achromatomaly
53, 26.654, 1.592

CSS Examples

Text

The CSS property to change the color of the text to CIELCh 57, 67.701, 9.176 is called "color". The color property can be set on classes, ids or directly on the HTML element.

This example shows how text in the color `rgb(241, 73, 121)` looks like.

```
.text, #text, p{  
    color:rgb(241, 73, 121)  
}
```

If you want to add a text shadow in that color use the text-shadow property, you can generate a text shadow directly with our [CSS Text Shadow Generator](#).

Here you see how black text with a 4 pixel rgb(241, 73, 121) colored shadow looks like.

```
.shadow{ text-shadow: 4px 4px 2px rgb(241, 73, 121) }
```

Border

The CSS property to change the border of an element to CIELCh 57, 67.701, 9.176 is called "border". The border property can be set on classes, ids or directly on the HTML element.

This example shows the color as border, it can be applied via the CSS property "border" or "border-color".

```
.border, #border, table{ border:4px solid rgb(241, 73, 121) }
```

If only the border color should be changed use the property `border-color`.

```
.border{ border-color:rgb(241, 73, 121) }
```

If you want to add a box shadow in that color use:

Here you see how a box with a 4 pixel `rgb(241, 73, 121)` colored shadow looks like.

```
.boxshadow{ -moz-box-shadow:4px 4px 4px 4px rgb(241, 73, 121); -webkit-box-shadow:4px 4px 4px 4px rgb(241, 73, 121); box-shadow:4px 4px 4px 4px rgb(241, 73, 121) }
```

Background

The CSS property to change the background color of an element to CIELCh 57, 67.701, 9.176 is called "background". The background property can be set on classes, ids or directly on the HTML element.

```
.background, #background, body{  
background: rgb(241, 73, 121) }
```

If only the background color should be changed can be used:

```
.background{ background-color: rgb(241, 73,  
121) }
```

This example shows the color as background, it is applied via the CSS property "background".

To optimize and compress your CSS code, you can use our [online CSS compressor and optimizer](#) based on csstidy. If you want to create a linear or radial gradient as background or border, check our [CSS Gradient Generator](#).

Hey! You found this booklet interesting? Support Converting Colors with the new Membership Option!

The pro membership hides all ads, plus gives you double the colors in the color bucket, and more awesome pro features!

[Learn more, Memberships starting at \\$2.50/m!](#)

**Follow me
on Twitter!**

@ConvertingColor