

Converting Colors

CIELCh(57, 68.022, 8.979)

Have a look what the booklet for
CIELCh(57, 68.022, 8.979) contains.

CIELCh(57, 68.020, 8.886)	3
<i>Conversions</i>	4
<i>Details</i>	6
<i>Harmonies</i>	11
<i>Previews</i>	20
<i>Color Blindness Simulation</i>	23
<i>CSS Examples</i>	26

Color

CIELCh(57, 68.020, 8.886)

Conversions

Conversions Part 1

Format	Color
Hex	F2497A
RGB	242, 73, 122
RGB Percent	95%, 29%, 48%
CMY	0.0525, 0.7152, 0.5228
CMYK	0.00, 0.70, 0.50, 0.05
HSL	343°, 86%, 62%
HSV	343°, 70%, 95%
XYZ	42.3386, 24.9227, 20.8920
YIQ	129.1170, 84.9950, 51.0670

Conversions

Conversions Part 2

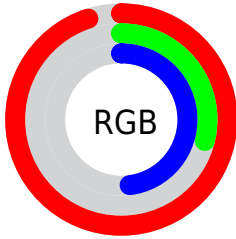
Format	Color
R_{YB}	242, 73, 122
Decimal	15878522
CIE _{Lab}	57.00, 67.20, 10.51
CIE _{LCh}	57, 68.020, 8.886
Yxy	24.9227, 0.4803, 0.2827
Android (android.graphics.Color)	4294068602 (0xFFFF2497A)
YUV	129.1170, -3.5087, 98.9984
Hunter-Lab	49.9226, 64.0186, 10.1337

Details

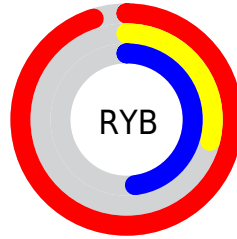
The CIELCh color **57, 68.020, 8.886** is a dark color, and the websafe version is hex **FF6699**. The color can be described as middle washed rose. A complement of this color would be **86, 55.357, 168.172**, and the grayscale version is **54, 0.007, 296.813**.

A 20% lighter version of the original color is **70, 51.074, 359.418**, and **38, 65.174, 10.484** is the 20% darker color. If you saturate the color by 10%, you get **54, 75.104, 12.729**, and if you desaturate by 10%, it is **61, 59.494, 5.859**.

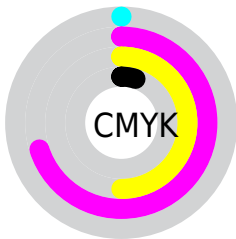
Distribution



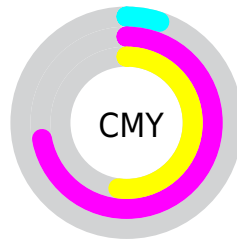
- Red (95%)
- Green (29%)
- Blue (48%)



- Red (95%)
- Yellow (29%)
- Blue (48%)



- Cyan (0%)
- Magenta (70%)
- Yellow (50%)
- Black (5%)




- Cyan (5%)
- Magenta (72%)
- Yellow (52%)


Brightness & Saturation Gradients

These gradients show how the CIELCh color 57, 68.020, 8.886 changes by changing the brightness by 10 percent. The first figure shows a shift by +10% for each color and the second figure -10%.

Similar to the brightness gradients but the following saturation gradients show a change of the CIELCh color 57, 68.020, 8.886 by changing the saturation by 10% instead.

 57, 68.020, 8.886  57, 68.020, 8.886

 100, 68.020, 8.886  47, 68.020, 8.886

 77, 68.020, 8.886  37, 68.020, 8.886

 87, 68.020, 8.886  27, 68.020, 8.886

 97, 68.020, 8.886  17, 68.020, 8.886

 7, 68.020, 8.886

 0, 68.020, 8.886

 57, 68.020, 8.886  57, 68.020, 8.886

 54, 75.104, 12.729  61, 59.494, 5.859

 52, 80.634, 17.499  66, 49.937, 3.468

■ 51, 85.078, 23.007

■ 71, 39.810, 1.553

■ 51, 85.105, 23.039

■ 77, 29.512,
359.986

■ 83, 19.331,
358.672

■ 89, 9.445, 357.533

■ 95, 0.051, 187.478

■ 99, 4.612, 199.257

Harmonies

Complementary

The Complementary color scheme is a pair of colors which are on the opposite of each other on the color wheel.



57, 68.020, 8.886



86, 55.357, 168.172

Rectangle

The Rectangle color scheme consists of four colors that form a rectangle on the color wheel.



57, 68.020, 8.886



57, 68.020, 58.886



57, 68.020, 188.886



57, 68.020, 238.886

Sweetspot

The Sweet Spot groups the original color and five complimentary colors.



57, 68.016, 8.888



86, 21.313, 358.810



54, 95.738, 318.255



44, 14.496, 359.158



0, 0.000, 0.000



53, 0.007, 296.813

Same Dimension

The Same Dimension uses a secret algorithm to generate beautiful new colors.



57, 68.016, 8.888



56, 80.902, 14.666



61, 66.595, 41.424



47, 5.359, 357.482



39, 68.828, 21.951



8, 28.793, 10.874

Inverse Universe

The Inverse Universe completely reimagines the original color for something new.



57, 68.016, 8.888



56, 80.902, 14.666



78, 37.475, 226.594



47, 5.359, 357.482



39, 68.828, 21.951



8, 28.793, 10.874

Previews

White Background



This preview shows how the CIELCh color 57, 68.020, 8.886 looks on a white background.

Color Contrast Check

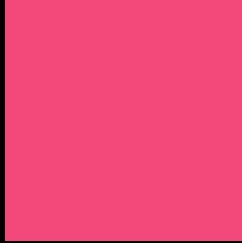
Large Text (above 18pt) WCAG AA ✓ Pass

Any Text WCAG AA ✗ Fail

Large Text (above 18pt) WCAG AAA ✗ Fail

Any Text WCAG AAA ✗ Fail

Black Background



This preview shows how the CIELCh color 57, 68.020, 8.886 looks on a black background.

Color Contrast Check

Large Text (above 18pt) WCAG AA ✓ Pass

Any Text WCAG AA ✓ Pass

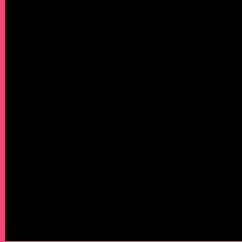
Large Text (above 18pt) WCAG AAA ✓ Pass

Any Text WCAG AAA × Fail

If you want to check with other color combinations, try the [Color Contrast Checker](#).

CIELCh 57, 68.020, 8.886

Background



This preview shows how black text looks on a background with the CIELCh color 57, 68.020, 8.886.

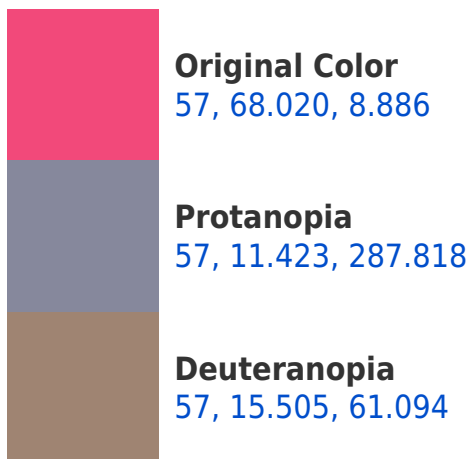


This preview shows how white text looks on a background with the CIELCh color 57, 68.020, 8.886.

Color Blindness Simulation

Color vision deficiency is a very complex topic, and I could not describe the different causes any better than Wikipedia does, so if you want to learn more, you should check out their [article about color blindness](#).

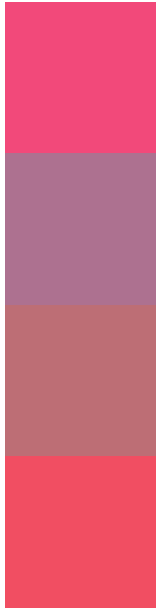
Dichromacy





Tritanopia
57, 68.982, 27.754

Trichromacy



Original Color
57, 68.020, 8.886

Protanomaly
55, 29.202, 345.969

Deuteranomaly
55, 33.554, 16.942

Tritanomaly
57, 67.913, 21.224

Monochromacy



Original Color
57, 68.020, 8.886

Achromatopsia
54, 0.007, 296.813

Achromatomaly
53, 26.654, 1.592

CSS Examples

Text

The CSS property to change the color of the text to CIELCh 57, 68.020, 8.886 is called "color". The color property can be set on classes, ids or directly on the HTML element.

This example shows how text in the color `rgb(242, 73, 122)` looks like.

```
.text, #text, p{  
    color:rgb(242, 73, 122)  
}
```

If you want to add a text shadow in that color use the text-shadow property, you can generate a text shadow directly with our [CSS Text Shadow Generator](#).

Here you see how black text with a 4 pixel rgb(242, 73, 122) colored shadow looks like.

```
.shadow{ text-shadow: 4px 4px 2px rgb(242, 73, 122) }
```

Border

The CSS property to change the border of an element to CIELCh 57, 68.020, 8.886 is called "border". The border property can be set on classes, ids or directly on the HTML element.

This example shows the color as border, it can be applied via the CSS property "border" or "border-color".

```
.border, #border, table{ border:4px solid rgb(242, 73, 122) }
```

If only the border color should be changed use the property `border-color`.

```
.border{ border-color:rgb(242, 73, 122) }
```

If you want to add a box shadow in that color use:

Here you see how a box with a 4 pixel `rgb(242, 73, 122)` colored shadow looks like.

```
.boxshadow{ -moz-box-shadow:4px 4px 4px  
4px rgb(242, 73, 122); -webkit-box-  
shadow:4px 4px 4px 4px rgb(242, 73, 122);  
box-shadow:4px 4px 4px 4px rgb(242, 73,  
122) }
```

Background

The CSS property to change the background color of an element to CIELCh 57, 68.020, 8.886 is called "background". The background property can be set on classes, ids or directly on the HTML element.

```
.background, #background, body{  
background: rgb(242, 73, 122) }
```

If only the background color should be changed can be used:

```
.background{ background-color: rgb(242, 73,  
122) }
```

This example shows the color as background, it is applied via the CSS property "background".

To optimize and compress your CSS code, you can use our [online CSS compressor and optimizer](#) based on csstidy. If you want to create a linear or radial gradient as background or border, check our [CSS Gradient Generator](#).

Hey! You found this booklet interesting? Support Converting Colors with the new Membership Option!

The pro membership hides all ads, plus gives you double the colors in the color bucket, and more awesome pro features!

[Learn more, Memberships starting at \\$2.50/m!](#)

**Follow me
on Twitter!**

@ConvertingColor