

Converting Colors

CIELCh(57, 72.935, 1.419)

Have a look what the booklet for
CIELCh(57, 72.935, 1.419) contains.

CIELCh(57, 72.894, 1.257)	3
<i>Conversions</i>	4
<i>Details</i>	6
<i>Harmonies</i>	11
<i>Previews</i>	20
<i>Color Blindness Simulation</i>	23
<i>CSS Examples</i>	26

Color

CIELCh(57, 72.894, 1.257)

Conversions

Conversions Part 1

Format	Color
Hex	F63F89
RGB	246, 63, 137
RGB Percent	96%, 25%, 54%
CMY	0.0357, 0.7533, 0.4631
CMYK	0.00, 0.74, 0.44, 0.04
HSL	336°, 91%, 61%
HSV	336°, 74%, 96%
XYZ	44.2537, 24.9227, 26.1153
YIQ	126.1530, 85.3140, 61.8100

Conversions

Conversions Part 2

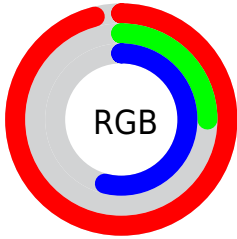
Format	Color
R_{YB}	246, 63, 137
Decimal	16138121
CIE _{Lab}	57.00, 72.88, 1.60
CIE _{LCh}	57, 72.894, 1.257
Yxy	24.9227, 0.4644, 0.2615
Android (android.graphics.Color)	4294328201 (0xFFFF63F89)
YUV	126.1530, 5.3476, 105.1058
Hunter-Lab	49.9226, 70.8661, 3.9303

Details

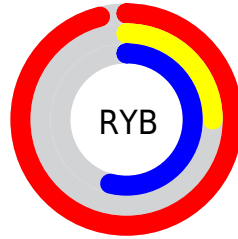
The CIELCh color **57, 72.894, 1.257** is a dark color, and the websafe version is hex **FF3399**. The color can be described as middle washed rose. A complement of this color would be **87, 65.771, 159.581**, and the grayscale version is **53, 0.007, 296.813**.

A 20% lighter version of the original color is **69, 57.474, 349.254**, and **39, 66.119, 4.586** is the 20% darker color. If you saturate the color by 10%, you get **54, 78.109, 4.874**, and if you desaturate by 10%, it is **61, 65.653, 358.417**.

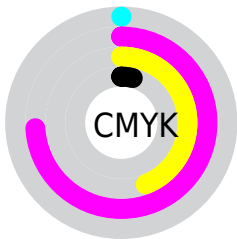
Distribution



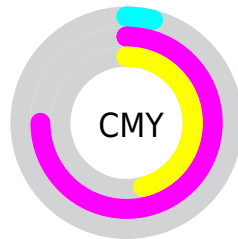
- Red (96%)
- Green (25%)
- Blue (54%)



- Red (96%)
- Yellow (25%)
- Blue (54%)



- Cyan (0%)
- Magenta (74%)
- Yellow (44%)
- Black (4%)



- Cyan (4%)
- Magenta (75%)
- Yellow (46%)

Brightness & Saturation Gradients

These gradients show how the CIELCh color 57, 72.894, 1.257 changes by changing the brightness by 10 percent. The first figure shows a shift by +10% for each color and the second figure -10%.

Similar to the brightness gradients but the following saturation gradients show a change of the CIELCh color 57, 72.894, 1.257 by changing the saturation by 10% instead.

 57, 72.894, 1.257

 57, 72.894, 1.257

 100, 72.894, 1.257

 47, 72.894, 1.257

 77, 72.894, 1.257

 37, 72.894, 1.257

 87, 72.894, 1.257

 27, 72.894, 1.257

 97, 72.894, 1.257

 17, 72.894, 1.257


 7, 72.894, 1.257

 0, 72.894, 1.257

 57, 72.894, 1.257

 57, 72.894, 1.257

 54, 78.109, 4.874

 61, 65.653,
358.417

 53, 81.318, 9.416

52, 82.602, 12.269

65, 56.786,
356.168

70, 46.826,
354.351

76, 36.280,
352.849

81, 25.545,
351.574

88, 14.894,
350.464

94, 4.495, 349.420

99, 3.192, 190.966

99, 3.147, 199.416

Harmonies

Complementary

The Complementary color scheme is a pair of colors which are on the opposite of each other on the color wheel.



57, 72.894, 1.257



87, 65.771, 159.581

Rectangle

The Rectangle color scheme consists of four colors that form a rectangle on the color wheel.



57, 72.894, 1.257



57, 72.894, 51.257



57, 72.894, 181.257



57, 72.894, 231.257

Sweetspot

The Sweet Spot groups the original color and five complimentary colors.



57, 72.890, 1.258



86, 23.641, 351.298



50, 102.280, 314.823



44, 15.932, 351.615



0, 0.000, 0.000



53, 0.007, 296.813

Same Dimension

The Same Dimension uses a secret algorithm to generate beautiful new colors.



57, 72.890, 1.258



56, 82.092, 6.913



57, 77.420, 35.584



48, 5.806, 349.955



40, 66.901, 11.268



9, 29.677, 3.625

Inverse Universe

The Inverse Universe completely reimagines the original color for something new.



57, 72.890, 1.258



56, 82.092, 6.913



84, 41.480, 208.147



48, 5.806, 349.955



40, 66.901, 11.268



9, 29.677, 3.625

Previews

White Background



This preview shows how the CIELCh color 57, 72.894, 1.257 looks on a white background.

Color Contrast Check

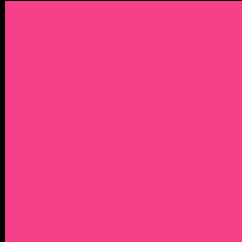
Large Text (above 18pt) WCAG AA ✓ Pass

Any Text WCAG AA ✗ Fail

Large Text (above 18pt) WCAG AAA ✗ Fail

Any Text WCAG AAA ✗ Fail

Black Background



This preview shows how the CIELCh color 57, 72.894, 1.257 looks on a black background.

Color Contrast Check

Large Text (above 18pt) WCAG AA ✓ Pass

Any Text WCAG AA ✓ Pass

Large Text (above 18pt) WCAG AAA ✓ Pass

Any Text WCAG AAA × Fail

If you want to check with other color combinations, try the [Color Contrast Checker](#).

CIELCh 57, 72.894, 1.257

Background



This preview shows how black text looks on a background with the CIELCh color 57, 72.894, 1.257.

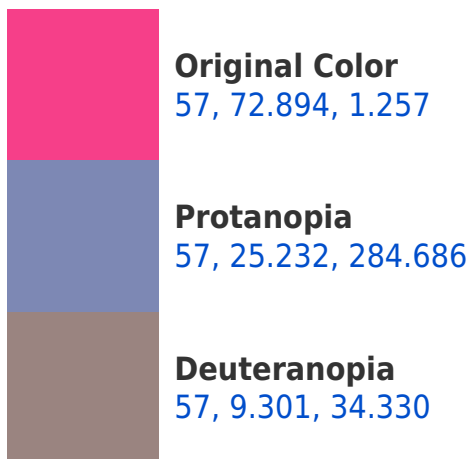


This preview shows how white text looks on a background with the CIELCh color 57, 72.894, 1.257.

Color Blindness Simulation

Color vision deficiency is a very complex topic, and I could not describe the different causes any better than Wikipedia does, so if you want to learn more, you should check out their [article about color blindness](#).

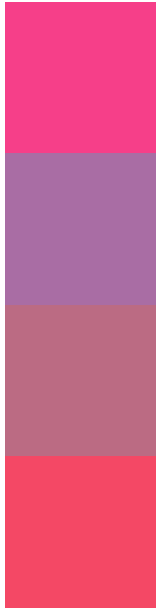
Dichromacy





Tritanopia
57, 72.044, 28.515

Trichromacy



Original Color
57, 72.894, 1.257

Protanomaly
54, 38.243, 328.777

Deuteranomaly
55, 34.771, 1.233

Tritanomaly
57, 70.333, 18.771

Monochromacy



Original Color
57, 72.894, 1.257

Achromatopsia
53, 0.007, 296.813

Achromatomaly
52, 30.787, 353.525

CSS Examples

Text

The CSS property to change the color of the text to CIELCh 57, 72.894, 1.257 is called "color". The color property can be set on classes, ids or directly on the HTML element.

This example shows how text in the color `rgb(246, 63, 137)` looks like.

```
.text, #text, p{  
    color:rgb(246, 63, 137)  
}
```

If you want to add a text shadow in that color use the text-shadow property, you can generate a text shadow directly with our [CSS Text Shadow Generator](#).

Here you see how black text with a 4 pixel rgb(246, 63, 137) colored shadow looks like.

```
.shadow{ text-shadow: 4px 4px 2px rgb(246, 63, 137) }
```

Border

The CSS property to change the border of an element to CIELCh 57, 72.894, 1.257 is called "border". The border property can be set on classes, ids or directly on the HTML element.

This example shows the color as border, it can be applied via the CSS property "border" or "border-color".

```
.border, #border, table{ border:4px solid rgb(246, 63, 137) }
```

If only the border color should be changed use the property `border-color`.

```
.border{ border-color:rgb(246, 63, 137) }
```

If you want to add a box shadow in that color use:

Here you see how a box with a 4 pixel `rgb(246, 63, 137)` colored shadow looks like.

```
.boxshadow{ -moz-box-shadow:4px 4px 4px  
4px rgb(246, 63, 137); -webkit-box-  
shadow:4px 4px 4px 4px rgb(246, 63, 137);  
box-shadow:4px 4px 4px 4px rgb(246, 63,  
137) }
```

Background

The CSS property to change the background color of an element to CIELCh 57, 72.894, 1.257 is called "background". The background property can be set on classes, ids or directly on the HTML element.

```
.background, #background, body{  
background: rgb(246, 63, 137) }
```

If only the background color should be changed can be used:

```
.background{ background-color: rgb(246, 63,  
137) }
```

This example shows the color as background, it is applied via the CSS property "background".

To optimize and compress your CSS code, you can use our [online CSS compressor and optimizer](#) based on csstidy. If you want to create a linear or radial gradient as background or border, check our [CSS Gradient Generator](#).

Hey! You found this booklet interesting? Support Converting Colors with the new Membership Option!

The pro membership hides all ads, plus gives you double the colors in the color bucket, and more awesome pro features!

[Learn more, Memberships starting at \\$2.50/m!](#)

**Follow me
on Twitter!**

@ConvertingColor