

Converting Colors

CIELCh(57, 76.335, 17.159)

Have a look what the booklet for
CIELCh(57, 76.335, 17.159) contains.

CIELCh(57, 76.123, 17.114)	3
<i>Conversions</i>	4
<i>Details</i>	6
<i>Harmonies</i>	11
<i>Previews</i>	20
<i>Color Blindness Simulation</i>	23
<i>CSS Examples</i>	26

Color

CIELCh(57, 76.123, 17.114)

Conversions

Conversions Part 1

Format	Color
Hex	FC3C66
RGB	252, 60, 102
RGB Percent	99%, 24%, 40%
CMY	0.0113, 0.7642, 0.5997
CMYK	0.00, 0.76, 0.60, 0.01
HSL	347°, 97%, 61%
HSV	347°, 76%, 99%
XYZ	44.2112, 24.9227, 15.0730
YIQ	122.1960, 100.9500, 53.7660

Conversions

Conversions Part 2

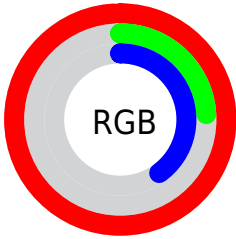
Format	Color
R_{YB}	252, 60, 102
Decimal	16530534
CIE _{Lab}	57.00, 72.75, 22.40
CIE _{LCh}	57, 76.123, 17.114
Yxy	24.9227, 0.5250, 0.2960
Android (android.graphics.Color)	4294720614 (0xFFFC3C66)
YUV	122.1960, -9.9566, 113.8381
Hunter-Lab	49.9226, 70.7142, 17.0445

Details

The CIELCh color **57, 76.123, 17.114** is a dark color, and the websafe version is hex **FF3366**. The color can be described as middle washed rose. A complement of this color would be **90, 56.147, 172.975**, and the grayscale version is **51, 0.007, 296.813**.

A 20% lighter version of the original color is **68, 53.628, 8.660**, and **40, 69.831, 21.380** is the 20% darker color. If you saturate the color by 10%, you get **55, 83.507, 21.741**, and if you desaturate by 10%, it is **60, 67.417, 13.370**.

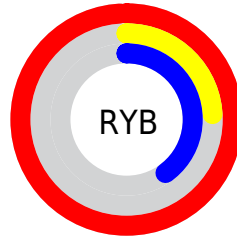
Distribution



Red (99%)

Green (24%)

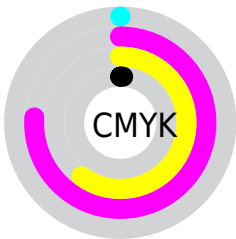
Blue (40%)



Red (99%)

Yellow (24%)

Blue (40%)

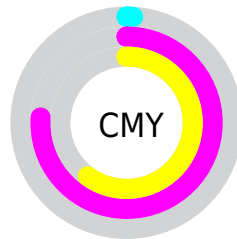


Cyan (0%)

Magenta (76%)

Yellow (60%)

Black (1%)



Cyan (1%)

Magenta (76%)

Yellow (60%)


Brightness & Saturation Gradients

These gradients show how the CIELCh color 57, 76.123, 17.114 changes by changing the brightness by 10 percent. The first figure shows a shift by +10% for each color and the second figure -10%.

Similar to the brightness gradients but the following saturation gradients show a change of the CIELCh color 57, 76.123, 17.114 by changing the saturation by 10% instead.

 57, 76.123, 17.114

 57, 76.123, 17.114

 100, 76.123,
17.114

 47, 76.123, 17.114

 77, 76.123, 17.114

 37, 76.123, 17.114

 87, 76.123, 17.114

 27, 76.123, 17.114

 97, 76.123, 17.114

 17, 76.123, 17.114

 7, 76.123, 17.114

 0, 76.123, 17.114

 57, 76.123, 17.114

 57, 76.123, 17.114

 55, 83.507, 21.741

 60, 67.417, 13.370

 53, 89.674, 27.115

 65, 57.633, 10.411

■ 53, 91.924, 29.190

■ 70, 47.185, 8.078

■ 76, 36.498, 6.216

■ 82, 25.909, 4.701

■ 88, 15.636, 3.438

■ 95, 5.804, 2.320

■ 100, 1.003,
200.002

Harmonies

Complementary

The Complementary color scheme is a pair of colors which are on the opposite of each other on the color wheel.



57, 76.123, 17.114



90, 56.147, 172.975

Rectangle

The Rectangle color scheme consists of four colors that form a rectangle on the color wheel.



57, 76.123, 17.114



57, 76.123, 67.114



57, 76.123, 197.114



57, 76.123, 247.114

Sweetspot

The Sweet Spot groups the original color and five complimentary colors.



57, 76.119, 17.116



85, 22.846, 4.283



56, 105.059, 320.303



43, 15.937, 4.768



0, 0.000, 0.000



53, 0.007, 296.813

Same Dimension

The Same Dimension uses a secret algorithm to generate beautiful new colors.



57, 76.119, 17.116



54, 87.420, 24.308



64, 73.747, 46.354



49, 5.376, 2.691



39, 73.281, 28.121



9, 30.903, 16.849

Inverse Universe

The Inverse Universe completely reimagines the original color for something new.



57, 76.119, 17.116



54, 87.420, 24.308



76, 41.158, 240.232



49, 5.376, 2.691



39, 73.281, 28.121



9, 30.903, 16.849

Previews

White Background



This preview shows how the CIELCh color 57, 76.123, 17.114 looks on a white background.

Color Contrast Check

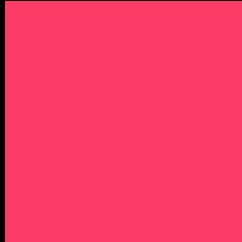
Large Text (above 18pt) WCAG AA ✓ Pass

Any Text WCAG AA ✗ Fail

Large Text (above 18pt) WCAG AAA ✗ Fail

Any Text WCAG AAA ✗ Fail

Black Background



This preview shows how the CIELCh color 57, 76.123, 17.114 looks on a black background.

Color Contrast Check

Large Text (above 18pt) WCAG AA ✓ Pass

Any Text WCAG AA ✓ Pass

Large Text (above 18pt) WCAG AAA ✓ Pass

Any Text WCAG AAA × Fail

If you want to check with other color combinations, try the [Color Contrast Checker](#).

CIELCh 57, 76.123, 17.114

Background



This preview shows how black text looks on a background with the CIELCh color 57, 76.123, 17.114.



This preview shows how white text looks on a background with the CIELCh color 57, 76.123, 17.114.

Color Blindness Simulation

Color vision deficiency is a very complex topic, and I could not describe the different causes any better than Wikipedia does, so if you want to learn more, you should check out their [article about color blindness](#).

Dichromacy



Original Color

57, 76.123, 17.114

Protanopia

57, 1.319, 353.611

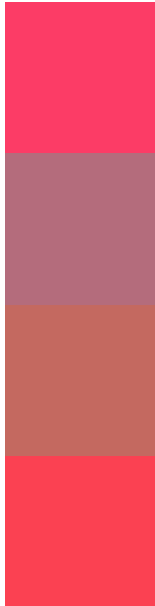
Deuteranopia

57, 26.395, 73.623



Tritanopia
57, 79.974, 30.804

Trichromacy



Original Color
57, 76.123, 17.114

Protanomaly
54, 30.879, 6.459

Deuteranomaly
55, 41.189, 31.218

Tritanomaly
57, 77.732, 25.998

Monochromacy



Original Color
57, 76.123, 17.114

Achromatopsia
51, 0.007, 296.813

Achromatomaly
50, 29.942, 6.933

CSS Examples

Text

The CSS property to change the color of the text to CIELCh 57, 76.123, 17.114 is called "color". The color property can be set on classes, ids or directly on the HTML element.

This example shows how text in the color `rgb(252, 60, 102)` looks like.

```
.text, #text, p{  
    color:rgb(252, 60, 102)  
}
```

If you want to add a text shadow in that color use the text-shadow property, you can generate a text shadow directly with our [CSS Text Shadow Generator](#).

Here you see how black text with a 4 pixel rgb(252, 60, 102) colored shadow looks like.

```
.shadow{ text-shadow: 4px 4px 2px rgb(252, 60, 102) }
```

Border

The CSS property to change the border of an element to CIELCh 57, 76.123, 17.114 is called "border". The border property can be set on classes, ids or directly on the HTML element.

This example shows the color as border, it can be applied via the CSS property "border" or "border-color".

```
.border, #border, table{ border:4px solid rgb(252, 60, 102) }
```

If only the border color should be changed use the property `border-color`.

```
.border{ border-color:rgb(252, 60, 102) }
```

If you want to add a box shadow in that color use:

Here you see how a box with a 4 pixel `rgb(252, 60, 102)` colored shadow looks like.

```
.boxshadow{ -moz-box-shadow:4px 4px 4px  
4px rgb(252, 60, 102); -webkit-box-  
shadow:4px 4px 4px 4px rgb(252, 60, 102);  
box-shadow:4px 4px 4px 4px rgb(252, 60,  
102) }
```

Background

The CSS property to change the background color of an element to CIELCh 57, 76.123, 17.114 is called "background". The background property can be set on classes, ids or directly on the HTML element.

```
.background, #background, body{  
background: rgb(252, 60, 102) }
```

If only the background color should be changed can be used:

```
.background{ background-color: rgb(252, 60,  
102) }
```

This example shows the color as background, it is applied via the CSS property "background".

To optimize and compress your CSS code, you can use our [online CSS compressor and optimizer](#) based on csstidy. If you want to create a linear or radial gradient as background or border, check our [CSS Gradient Generator](#).

Hey! You found this booklet interesting? Support Converting Colors with the new Membership Option!

The pro membership hides all ads, plus gives you double the colors in the color bucket, and more awesome pro features!

[Learn more, Memberships starting at \\$2.50/m!](#)

**Follow me
on Twitter!**

@ConvertingColor