

# Converting Colors

CIELCh(57, 76.450, 5.519)

Have a look what the booklet for  
CIELCh(57, 76.450, 5.519) contains.

<b>CIELCh(57, 76.503, 5.657)</b> .....	3
<i><b>Conversions</b></i> .....	4
<i><b>Details</b></i> .....	6
<i><b>Harmonies</b></i> .....	11
<i><b>Previews</b></i> .....	20
<i><b>Color Blindness Simulation</b></i> .....	23
<i><b>CSS Examples</b></i> .....	26

**Color**

**CIELCh(57, 76.503, 5.657)**

# Conversions

## Conversions Part 1

<b>Format</b>	<b>Color</b>
Hex	FC367F
RGB	252, 54, 127
RGB Percent	99%, 21%, 50%
CMY	0.0111, 0.7873, 0.5014
CMYK	0.00, 0.78, 0.50, 0.01
HSL	338°, 97%, 60%
HSV	338°, 78%, 99%
XYZ	45.3779, 24.9227, 22.5452
YIQ	121.5240, 94.5750, 64.6790

# Conversions

## Conversions Part 2

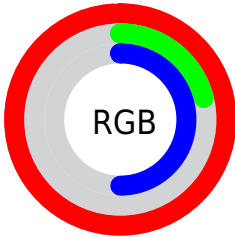
<b>Format</b>	<b>Color</b>
<b>R<sub>YB</sub></b>	252, 54, 127
Decimal	16529023
CIE <sub>Lab</sub>	57.00, 76.13, 7.54
CIE <sub>LCh</sub>	57, 76.503, 5.657
Yxy	24.9227, 0.4887, 0.2684
Android (android.graphics.Color)	4294719103 (0xFFFC367F)
YUV	121.5240, 2.6997, 114.4275
Hunter-Lab	49.9226, 74.8855, 8.1702

# Details

The CIELCh color **57, 76.503, 5.657** is a dark color, and the websafe version is hex **FF0066**. The color can be described as middle washed rose. A complement of this color would be **89, 67.015, 161.059**, and the grayscale version is **51, 0.007, 296.813**.

A 20% lighter version of the original color is **68, 57.760, 353.667**, and **40, 67.585, 10.527** is the 20% darker color. If you saturate the color by 10%, you get **55, 81.342, 9.910**, and if you desaturate by 10%, it is **60, 69.686, 2.300**.

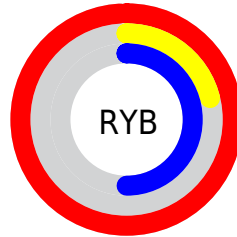
# Distribution



Red (99%)

Green (21%)

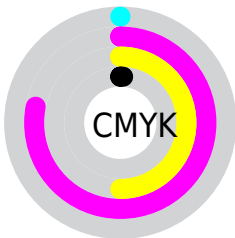
Blue (50%)



Red (99%)

Yellow (21%)

Blue (50%)

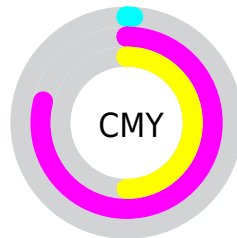


Cyan (0%)

Magenta (78%)

Yellow (50%)

Black (1%)



Cyan (1%)

Magenta (79%)

Yellow (50%)


# Brightness & Saturation Gradients


These gradients show how the CIELCh color 57, 76.503, 5.657 changes by changing the brightness by 10 percent. The first figure shows a shift by +10% for each color and the second figure -10%.


Similar to the brightness gradients but the following saturation gradients show a change of the CIELCh color 57, 76.503, 5.657 by changing the saturation by 10% instead.



 57, 76.503, 5.657       57, 76.503, 5.657

 100, 76.503, 5.657       47, 76.503, 5.657

 77, 76.503, 5.657       37, 76.503, 5.657

 87, 76.503, 5.657       27, 76.503, 5.657

 97, 76.503, 5.657       17, 76.503, 5.657

 7, 76.503, 5.657

 0, 76.503, 5.657

 57, 76.503, 5.657       57, 76.503, 5.657

 55, 81.342, 9.910       60, 69.686, 2.300

 54, 84.546, 15.084       64, 61.134,

■ 54, 85.013, 15.886

359.659

■ 69, 51.331,  
357.557

■ 75, 40.805,  
355.849

■ 81, 29.998,  
354.426

■ 87, 19.226,  
353.211

■ 93, 8.688, 352.132

■ 100, 1.006,  
187.579

■ 100, 0.981,  
200.018

# Harmonies

# Complementary

The Complementary color scheme is a pair of colors which are on the opposite of each other on the color wheel.



57, 76.503, 5.657



89, 67.015, 161.059

# Rectangle

The Rectangle color scheme consists of four colors that form a rectangle on the color wheel.



57, 76.503, 5.657



57, 76.503, 55.657



57, 76.503, 185.657



57, 76.503, 235.657

# Sweetspot

The Sweet Spot groups the original color and five complimentary colors.



57, 76.499, 5.659



84, 25.366, 353.860



51, 108.193, 315.744



43, 17.498, 354.307



0, 0.000, 0.000



53, 0.007, 296.813



# Same Dimension

The Same Dimension uses a secret algorithm to generate beautiful new colors.



57, 76.499, 5.659



55, 83.962, 12.693



58, 82.463, 38.053



49, 5.781, 352.236



40, 68.137, 14.816



9, 30.456, 7.025





# Inverse Universe

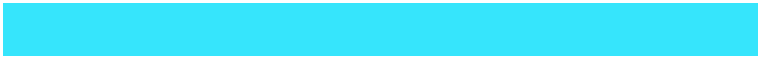
The Inverse Universe completely reimagines the original color for something new.



57, 76.499, 5.659



55, 83.962, 12.693



84, 41.993, 213.988



49, 5.781, 352.236



40, 68.137, 14.816



9, 30.456, 7.025



# Previews

## White Background



This preview shows how the CIELCh color 57, 76.503, 5.657 looks on a white background.

## Color Contrast Check

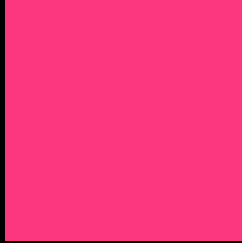
Large Text (above 18pt) WCAG AA ✓ Pass

Any Text WCAG AA ✗ Fail

Large Text (above 18pt) WCAG AAA ✗ Fail

Any Text WCAG AAA ✗ Fail

# Black Background



This preview shows how the CIELCh color 57, 76.503, 5.657 looks on a black background.

## Color Contrast Check

Large Text (above 18pt) WCAG AA ✓ Pass

Any Text WCAG AA ✓ Pass

Large Text (above 18pt) WCAG AAA ✓ Pass

Any Text WCAG AAA × Fail

If you want to check with other color combinations, try the [Color Contrast Checker](#).

# CIELCh 57, 76.503, 5.657

## Background



This preview shows how black text looks on a background with the CIELCh color 57, 76.503, 5.657.



This preview shows how white text looks on a background with the CIELCh color 57, 76.503, 5.657.

# Color Blindness Simulation

Color vision deficiency is a very complex topic, and I could not describe the different causes any better than Wikipedia does, so if you want to learn more, you should check out their [article about color blindness](#).

## Dichromacy



### Original Color

57, 76.503, 5.657

### Protanopia

57, 20.639, 284.857

### Deuteranopia

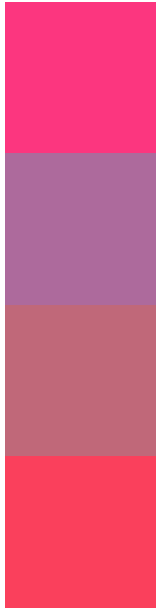
57, 13.275, 56.755



**Tritanopia**  
57, 78.299, 30.407



# Trichromacy



**Original Color**  
57, 76.503, 5.657

**Protanomaly**  
54, 37.753, 335.151

**Deuteranomaly**  
55, 37.450, 9.778

**Tritanomaly**  
57, 75.800, 21.725

# Monochromacy



**Original Color**  
57, 76.503, 5.657

**Achromatopsia**  
51, 0.007, 296.813

**Achromatomaly**  
50, 32.726, 355.877

# CSS Examples

## Text

The CSS property to change the color of the text to CIELCh 57, 76.503, 5.657 is called "color". The color property can be set on classes, ids or directly on the HTML element.

This example shows how text in the color `rgb(252, 54, 127)` looks like.

```
.text, #text, p{  
    color:rgb(252, 54, 127)  
}
```

If you want to add a text shadow in that color use the text-shadow property, you can generate a text shadow directly with our [CSS Text Shadow Generator](#).

Here you see how black text with a 4 pixel rgb(252, 54, 127) colored shadow looks like.

```
.shadow{ text-shadow: 4px 4px 2px rgb(252, 54, 127) }
```

## Border

The CSS property to change the border of an element to CIELCh 57, 76.503, 5.657 is called "border". The border property can be set on classes, ids or directly on the HTML element.

This example shows the color as border, it can be applied via the CSS property "border" or "border-color".

```
.border, #border, table{ border:4px solid rgb(252, 54, 127) }
```

If only the border color should be changed use the property border-color.

```
.border{ border-color:rgb(252, 54, 127) }
```

If you want to add a box shadow in that color use:

Here you see how a box with a 4 pixel rgb(252, 54, 127) colored shadow looks like.

```
.boxshadow{ -moz-box-shadow:4px 4px 4px  
4px rgb(252, 54, 127); -webkit-box-  
shadow:4px 4px 4px 4px rgb(252, 54, 127);  
box-shadow:4px 4px 4px 4px rgb(252, 54,  
127) }
```

# Background

The CSS property to change the background color of an element to CIELCh 57, 76.503, 5.657 is called "background". The background property can be set on classes, ids or directly on the HTML element.

```
.background, #background, body{  
background: rgb(252, 54, 127) }
```

If only the background color should be changed can be used:

```
.background{ background-color: rgb(252, 54,  
127) }
```

This example shows the color as background, it is applied via the CSS property "background".

To optimize and compress your CSS code, you can use our [online CSS compressor and optimizer](#) based on csstidy. If you want to create a linear or radial gradient as background or border, check our [CSS Gradient Generator](#).

Hey! You found this booklet interesting? Support Converting Colors with the new Membership Option!

The pro membership hides all ads, plus gives you double the colors in the color bucket, and more awesome pro features!

**[Learn more, Memberships starting at \\$2.50/m!](#)**

**Follow me  
on Twitter!**

@ConvertingColor