

Converting Colors

CIELCh(57, 76.680, 4.385)

Have a look what the booklet for
CIELCh(57, 76.680, 4.385) contains.

CIELCh(57, 76.591, 4.396)	3
<i>Conversions</i>	4
<i>Details</i>	6
<i>Harmonies</i>	11
<i>Previews</i>	20
<i>Color Blindness Simulation</i>	23
<i>CSS Examples</i>	26

Color

CIELCh(57, 76.591, 4.396)

Conversions

Conversions Part 1

Format	Color
Hex	FC3682
RGB	252, 54, 130
RGB Percent	99%, 21%, 51%
CMY	0.0120, 0.7885, 0.4904
CMYK	0.00, 0.79, 0.48, 0.01
HSL	337°, 97%, 60%
HSV	337°, 79%, 99%
XYZ	45.4599, 24.9227, 23.5137
YIQ	121.8660, 93.6120, 65.6120

Conversions

Conversions Part 2

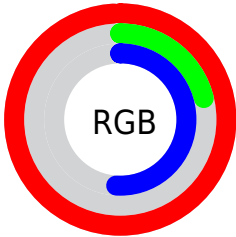
Format	Color
R_{YB}	252, 54, 130
Decimal	16529026
CIE _{Lab}	57.00, 76.37, 5.87
CIE _{LCh}	57, 76.591, 4.396
Yxy	24.9227, 0.4842, 0.2654
Android (android.graphics.Color)	4294719106 (0xFFFC3682)
YUV	121.8660, 4.0101, 114.1275
Hunter-Lab	49.9226, 75.1787, 7.0201

Details

The CIELCh color **57, 76.591, 4.396** is a dark color, and the websafe version is hex **FF3399**. The color can be described as middle washed rose. A complement of this color would be **89, 68.126, 160.029**, and the grayscale version is **51, 0.007, 296.813**.

A 20% lighter version of the original color is **68, 58.519, 351.703**, and **40, 67.468, 8.980** is the 20% darker color. If you saturate the color by 10%, you get **55, 81.223, 8.551**, and if you desaturate by 10%, it is **60, 69.915, 1.121**.

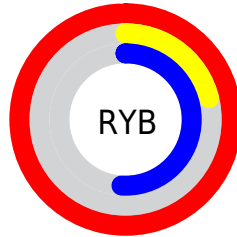
Distribution



Red (99%)

Green (21%)

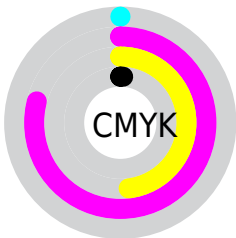
Blue (51%)



Red (99%)

Yellow (21%)

Blue (51%)

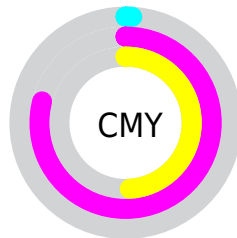


Cyan (0%)

Magenta (79%)

Yellow (48%)

Black (1%)



Cyan (1%)

Magenta (79%)

Yellow (49%)

Brightness & Saturation Gradients

These gradients show how the CIELCh color 57, 76.591, 4.396 changes by changing the brightness by 10 percent. The first figure shows a shift by +10% for each color and the second figure -10%.

Similar to the brightness gradients but the following saturation gradients show a change of the CIELCh color 57, 76.591, 4.396 by changing the saturation by 10% instead.

 57, 76.591, 4.396

 57, 76.591, 4.396

 100, 76.591, 4.396

 47, 76.591, 4.396

 77, 76.591, 4.396

 37, 76.591, 4.396

 87, 76.591, 4.396

 27, 76.591, 4.396

 97, 76.591, 4.396

 17, 76.591, 4.396

 7, 76.591, 4.396


 0, 76.591, 4.396

 57, 76.591, 4.396

 57, 76.591, 4.396

 55, 81.223, 8.551

 60, 69.915, 1.121

 54, 84.159, 13.627

 64, 61.447,

■ 54, 84.555, 14.365

358.543

■ 69, 51.680,
356.488

■ 75, 41.151,
354.813

■ 81, 30.309,
353.414

■ 87, 19.478,
352.215

■ 93, 8.864, 351.148

■ 100, 1.161,
177.100

■ 100, 1.067,
199.959

Harmonies

Complementary

The Complementary color scheme is a pair of colors which are on the opposite of each other on the color wheel.



57, 76.591, 4.396



89, 68.126, 160.029

Rectangle

The Rectangle color scheme consists of four colors that form a rectangle on the color wheel.



57, 76.591, 4.396



57, 76.591, 54.396



57, 76.591, 184.396



57, 76.591, 234.396

Sweetspot

The Sweet Spot groups the original color and five complimentary colors.



57, 76.587, 4.398



84, 25.568, 352.844



50, 108.361, 315.269



43, 17.633, 353.284



0, 0.000, 0.000



53, 0.007, 296.813

Same Dimension

The Same Dimension uses a secret algorithm to generate beautiful new colors.



57, 76.587, 4.398



55, 83.733, 11.231



58, 83.179, 37.342



49, 5.833, 351.241



40, 67.864, 13.315



10, 30.462, 5.759

Inverse Universe

The Inverse Universe completely reimagines the original color for something new.



57, 76.587, 4.398



55, 83.733, 11.231



85, 42.497, 211.223



49, 5.833, 351.241



40, 67.864, 13.315



10, 30.462, 5.759

Previews

White Background



This preview shows how the CIELCh color 57, 76.591, 4.396 looks on a white background.

Color Contrast Check

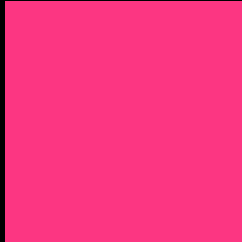
Large Text (above 18pt) WCAG AA ✓ Pass

Any Text WCAG AA × Fail

Large Text (above 18pt) WCAG AAA × Fail

Any Text WCAG AAA × Fail

Black Background



This preview shows how the CIELCh color 57, 76.591, 4.396 looks on a black background.

Color Contrast Check

Large Text (above 18pt) WCAG AA ✓ Pass

Any Text WCAG AA ✓ Pass

Large Text (above 18pt) WCAG AAA ✓ Pass

Any Text WCAG AAA × Fail

If you want to check with other color combinations, try the [Color Contrast Checker](#).

CIELCh 57, 76.591, 4.396

Background



This preview shows how black text looks on a background with the CIELCh color 57, 76.591, 4.396.

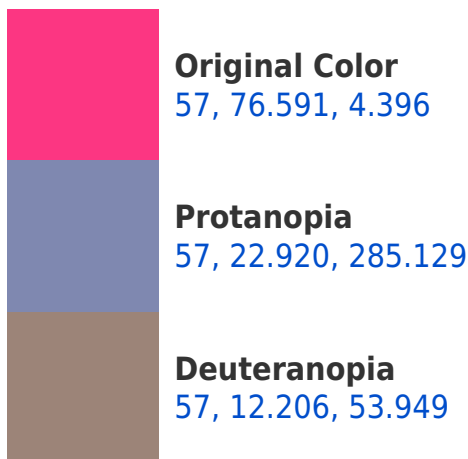


This preview shows how white text looks on a background with the CIELCh color 57, 76.591, 4.396.

Color Blindness Simulation

Color vision deficiency is a very complex topic, and I could not describe the different causes any better than Wikipedia does, so if you want to learn more, you should check out their [article about color blindness](#).

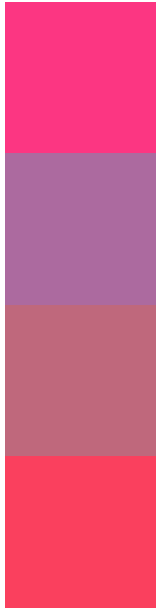
Dichromacy





Tritanopia
57, 77.843, 30.259

Trichromacy



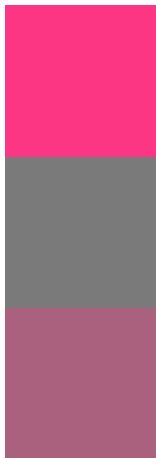
Original Color
57, 76.591, 4.396

Protanomaly
54, 38.708, 332.879

Deuteranomaly
54, 37.181, 6.944

Tritanomaly
57, 75.496, 20.899

Monochromacy



Original Color
57, 76.591, 4.396

Achromatopsia
51, 0.007, 296.813

Achromatomaly
50, 32.915, 354.937

CSS Examples

Text

The CSS property to change the color of the text to CIELCh 57, 76.591, 4.396 is called "color". The color property can be set on classes, ids or directly on the HTML element.

This example shows how text in the color `rgb(252, 54, 130)` looks like.

```
.text, #text, p{  
    color:rgb(252, 54, 130)  
}
```

If you want to add a text shadow in that color use the text-shadow property, you can generate a text shadow directly with our [CSS Text Shadow Generator](#).

Here you see how black text with a 4 pixel rgb(252, 54, 130) colored shadow looks like.

```
.shadow{ text-shadow: 4px 4px 2px rgb(252, 54, 130) }
```

Border

The CSS property to change the border of an element to CIELCh 57, 76.591, 4.396 is called "border". The border property can be set on classes, ids or directly on the HTML element.

This example shows the color as border, it can be applied via the CSS property "border" or "border-color".

```
.border, #border, table{ border:4px solid rgb(252, 54, 130) }
```

If only the border color should be changed use the property border-color.

```
.border{ border-color:rgb(252, 54, 130) }
```

If you want to add a box shadow in that color use:

Here you see how a box with a 4 pixel rgb(252, 54, 130) colored shadow looks like.

```
.boxshadow{ -moz-box-shadow:4px 4px 4px  
4px rgb(252, 54, 130); -webkit-box-  
shadow:4px 4px 4px 4px rgb(252, 54, 130);  
box-shadow:4px 4px 4px 4px rgb(252, 54,  
130) }
```

Background

The CSS property to change the background color of an element to CIELCh 57, 76.591, 4.396 is called "background". The background property can be set on classes, ids or directly on the HTML element.

```
.background, #background, body{  
background: rgb(252, 54, 130) }
```

If only the background color should be changed can be used:

```
.background{ background-color: rgb(252, 54,  
130) }
```

This example shows the color as background, it is applied via the CSS property "background".

To optimize and compress your CSS code, you can use our [online CSS compressor and optimizer](#) based on csstidy. If you want to create a linear or radial gradient as background or border, check our [CSS Gradient Generator](#).

Hey! You found this booklet interesting? Support Converting Colors with the new Membership Option!

The pro membership hides all ads, plus gives you double the colors in the color bucket, and more awesome pro features!

[Learn more, Memberships starting at \\$2.50/m!](#)

**Follow me
on Twitter!**

@ConvertingColor