

Converting Colors

CIELCh(57, 77.202, 5.899)

Have a look what the booklet for
CIELCh(57, 77.202, 5.899) contains.

CIELCh(57, 77.262, 5.625)	3
<i>Conversions</i>	4
<i>Details</i>	6
<i>Harmonies</i>	11
<i>Previews</i>	20
<i>Color Blindness Simulation</i>	23
<i>CSS Examples</i>	26

Color

CIELCh(57, 77.262, 5.625)

Conversions

Conversions Part 1

Format	Color
Hex	FD347F
RGB	253, 52, 127
RGB Percent	99%, 20%, 50%
CMY	0.0072, 0.7952, 0.5015
CMYK	0.00, 0.79, 0.50, 0.01
HSL	338°, 98%, 60%
HSV	338°, 79%, 99%
XYZ	45.6430, 24.9227, 22.5270
YIQ	120.6490, 95.7210, 65.9370

Conversions

Conversions Part 2

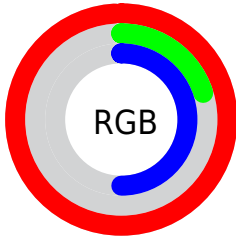
Format	Color
R_{YB}	253, 52, 127
Decimal	16594047
CIE _{Lab}	57.00, 76.89, 7.57
CIE _{LCh}	57, 77.262, 5.625
Yxy	24.9227, 0.4903, 0.2677
Android (android.graphics.Color)	4294784127 (0xFFFD347F)
YUV	120.6490, 3.1310, 116.0718
Hunter-Lab	49.9226, 75.8334, 8.1919

Details

The CIELCh color **57, 77.262, 5.625** is a dark color, and the websafe version is hex **FF0066**. The color can be described as middle washed rose. A complement of this color would be **89, 68.027, 160.588**, and the grayscale version is **51, 0.007, 296.813**.

A 20% lighter version of the original color is **68, 58.250, 353.461**, and **40, 67.874, 10.759** is the 20% darker color. If you saturate the color by 10%, you get **55, 81.888, 9.935**, and if you desaturate by 10%, it is **60, 70.633, 2.220**.

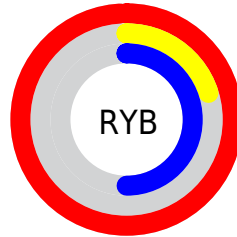
Distribution



Red (99%)

Green (20%)

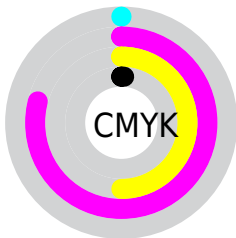
Blue (50%)



Red (99%)

Yellow (20%)

Blue (50%)

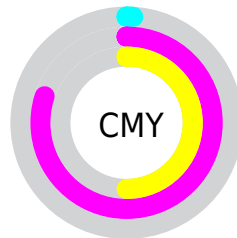


Cyan (0%)

Magenta (79%)

Yellow (50%)

Black (1%)



Cyan (1%)


Magenta (80%)

Yellow (50%)

Brightness & Saturation Gradients

These gradients show how the CIELCh color 57, 77.262, 5.625 changes by changing the brightness by 10 percent. The first figure shows a shift by +10% for each color and the second figure -10%.

Similar to the brightness gradients but the following saturation gradients show a change of the CIELCh color 57, 77.262, 5.625 by changing the saturation by 10% instead.

 57, 77.262, 5.625  57, 77.262, 5.625

 100, 77.262, 5.625  47, 77.262, 5.625

 77, 77.262, 5.625  37, 77.262, 5.625


 87, 77.262, 5.625  27, 77.262, 5.625

 97, 77.262, 5.625  17, 77.262, 5.625

 7, 77.262, 5.625

 0, 77.262, 5.625

 57, 77.262, 5.625  57, 77.262, 5.625

 55, 81.888, 9.935  60, 70.633, 2.220

 54, 84.955, 15.134  64, 62.211,

■ 54, 85.148, 15.466

359.542

■ 69, 52.474,
357.413

■ 75, 41.956,
355.685

■ 80, 31.114,
354.247

■ 87, 20.276,
353.021

■ 93, 9.656, 351.938

100, 0.626,
171.927

100, 0.639,
200.402

Harmonies

Complementary

The Complementary color scheme is a pair of colors which are on the opposite of each other on the color wheel.



57, 77.262, 5.625



89, 68.027, 160.588

Rectangle

The Rectangle color scheme consists of four colors that form a rectangle on the color wheel.



57, 77.262, 5.625



57, 77.262, 55.625



57, 77.262, 185.625



57, 77.262, 235.625

Sweetspot

The Sweet Spot groups the original color and five complimentary colors.



57, 77.258, 5.627



84, 25.423, 353.568



50, 109.339, 315.730



43, 17.536, 354.013



0, 0.000, 0.000



53, 0.007, 296.813

Same Dimension

The Same Dimension uses a secret algorithm to generate beautiful new colors.



57, 77.258, 5.627



55, 84.181, 12.805



58, 83.742, 38.237



50, 5.893, 351.952



41, 68.748, 14.443



10, 31.283, 7.113

Inverse Universe

The Inverse Universe completely reimagines the original color for something new.



57, 77.258, 5.627



55, 84.181, 12.805



84, 42.270, 214.122



50, 5.893, 351.952



41, 68.748, 14.443



10, 31.283, 7.113

Previews

White Background



This preview shows how the CIELCh color 57, 77.262, 5.625 looks on a white background.

Color Contrast Check

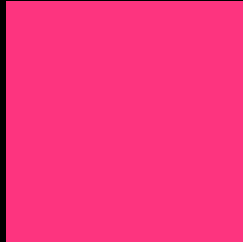
Large Text (above 18pt) WCAG AA ✓ Pass

Any Text WCAG AA ✗ Fail

Large Text (above 18pt) WCAG AAA ✗ Fail

Any Text WCAG AAA ✗ Fail

Black Background



This preview shows how the CIELCh color 57, 77.262, 5.625 looks on a black background.

Color Contrast Check

Large Text (above 18pt) WCAG AA ✓ Pass

Any Text WCAG AA ✓ Pass

Large Text (above 18pt) WCAG AAA ✓ Pass

Any Text WCAG AAA × Fail

If you want to check with other color combinations, try the [Color Contrast Checker](#).

CIELCh 57, 77.262, 5.625

Background



This preview shows how black text looks on a background with the CIELCh color 57, 77.262, 5.625.



This preview shows how white text looks on a background with the CIELCh color 57, 77.262, 5.625.

Color Blindness Simulation

Color vision deficiency is a very complex topic, and I could not describe the different causes any better than Wikipedia does, so if you want to learn more, you should check out their [article about color blindness](#).

Dichromacy



Original Color

57, 77.262, 5.625

Protanopia

57, 21.201, 285.149

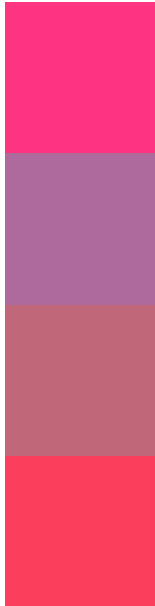
Deuteranopia

57, 13.652, 58.529



Tritanopia
57, 79.381, 30.958

Trichromacy



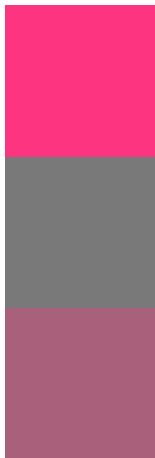
Original Color
57, 77.262, 5.625

Protanomaly
54, 37.980, 335.637

Deuteranomaly
54, 37.920, 9.196

Tritanomaly
57, 76.781, 21.879

Monochromacy



Original Color
57, 77.262, 5.625

Achromatopsia
51, 0.007, 296.813

Achromatomaly
50, 33.112, 356.323

CSS Examples

Text

The CSS property to change the color of the text to CIELCh 57, 77.262, 5.625 is called "color". The color property can be set on classes, ids or directly on the HTML element.

This example shows how text in the color `rgb(253, 52, 127)` looks like.

```
.text, #text, p{  
    color:rgb(253, 52, 127)  
}
```

If you want to add a text shadow in that color use the text-shadow property, you can generate a text shadow directly with our [CSS Text Shadow Generator](#).

Here you see how black text with a 4 pixel rgb(253, 52, 127) colored shadow looks like.

```
.shadow{ text-shadow: 4px 4px 2px rgb(253, 52, 127) }
```

Border

The CSS property to change the border of an element to CIELCh 57, 77.262, 5.625 is called "border". The border property can be set on classes, ids or directly on the HTML element.

This example shows the color as border, it can be applied via the CSS property "border" or "border-color".

```
.border, #border, table{ border:4px solid rgb(253, 52, 127) }
```

If only the border color should be changed use the property border-color.

```
.border{ border-color:rgb(253, 52, 127) }
```

If you want to add a box shadow in that color use:

Here you see how a box with a 4 pixel rgb(253, 52, 127) colored shadow looks like.

```
.boxshadow{ -moz-box-shadow:4px 4px 4px  
4px rgb(253, 52, 127); -webkit-box-  
shadow:4px 4px 4px 4px rgb(253, 52, 127);  
box-shadow:4px 4px 4px 4px rgb(253, 52,  
127) }
```

Background

The CSS property to change the background color of an element to CIELCh 57, 77.262, 5.625 is called "background". The background property can be set on classes, ids or directly on the HTML element.

```
.background, #background, body{  
background: rgb(253, 52, 127) }
```

If only the background color should be changed can be used:

```
.background{ background-color: rgb(253, 52,  
127) }
```

This example shows the color as background, it is applied via the CSS property "background".

To optimize and compress your CSS code, you can use our [online CSS compressor and optimizer](#) based on csstidy. If you want to create a linear or radial gradient as background or border, check our [CSS Gradient Generator](#).

Hey! You found this booklet interesting? Support Converting Colors with the new Membership Option!

The pro membership hides all ads, plus gives you double the colors in the color bucket, and more awesome pro features!

[Learn more, Memberships starting at \\$2.50/m!](#)

**Follow me
on Twitter!**

@ConvertingColor