

# Converting Colors

CIELCh(57, 77.691, 9.984)

Have a look what the booklet for  
CIELCh(57, 77.691, 9.984) contains.

<b>CIELCh(57, 77.588, 9.992)</b> .....	3
<i><b>Conversions</b></i> .....	4
<i><b>Details</b></i> .....	6
<i><b>Harmonies</b></i> .....	11
<i><b>Previews</b></i> .....	20
<i><b>Color Blindness Simulation</b></i> .....	23
<i><b>CSS Examples</b></i> .....	26

**Color**

**CIELCh(57, 77.588, 9.992)**

# Conversions

## Conversions Part 1

Format	Color
Hex	FE3475
RGB	254, 52, 117
RGB Percent	100%, 20%, 46%
CMY	0.0025, 0.7943, 0.5401
CMYK	0.00, 0.79, 0.54, 0.00
HSL	341°, 99%, 60%
HSV	341°, 79%, 100%
XYZ	45.4757, 24.9227, 19.3271
YIQ	119.8080, 99.5270, 63.0390

# Conversions

## Conversions Part 2

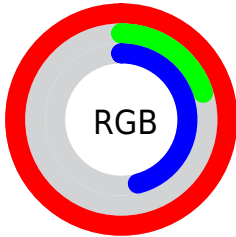
<b>Format</b>	<b>Color</b>
<b>R<sub>YB</sub></b>	254, 52, 117
Decimal	16659573
CIE <sub>Lab</sub>	57.00, 76.41, 13.46
CIE <sub>LCh</sub>	57, 77.588, 9.992
Yxy	24.9227, 0.5068, 0.2778
Android (android.graphics.Color)	4294849653 (0xFFFE3475)
YUV	119.8080, -1.3843, 117.6864
Hunter-Lab	49.9226, 75.2354, 11.9923

# Details

The CIELCh color **57, 77.588, 9.992** is a dark color, and the websafe version is hex **FF3366**. The color can be described as middle washed rose. A complement of this color would be **90, 64.603, 164.148**, and the grayscale version is **50, 0.007, 296.813**.

A 20% lighter version of the original color is **67, 57.161, 358.324**, and **40, 68.595, 15.340** is the 20% darker color. If you saturate the color by 10%, you get **55, 82.931, 14.612**, and if you desaturate by 10%, it is **60, 70.467, 6.309**.

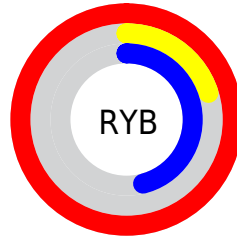
# Distribution



Red (100%)

Green (20%)

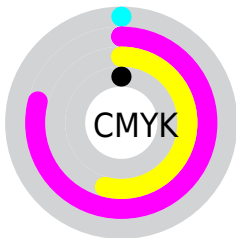
Blue (46%)



Red (100%)

Yellow (20%)

Blue (46%)

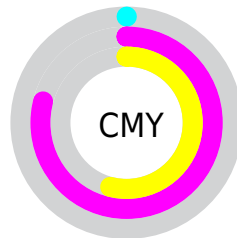


Cyan (0%)

Magenta (79%)

Yellow (54%)

Black (0%)



Cyan (0%)

Magenta (79%)

Yellow (54%)

# Brightness & Saturation Gradients

These gradients show how the CIELCh color 57, 77.588, 9.992 changes by changing the brightness by 10 percent. The first figure shows a shift by +10% for each color and the second figure -10%.

Similar to the brightness gradients but the following saturation gradients show a change of the CIELCh color 57, 77.588, 9.992 by changing the saturation by 10% instead.



 57, 77.588, 9.992       57, 77.588, 9.992

 100, 77.588, 9.992       47, 77.588, 9.992

 77, 77.588, 9.992       37, 77.588, 9.992


 87, 77.588, 9.992       27, 77.588, 9.992


 97, 77.588, 9.992       17, 77.588, 9.992

 7, 77.588, 9.992

 0, 77.588, 9.992

 57, 77.588, 9.992       57, 77.588, 9.992

 55, 82.931, 14.612       60, 70.467, 6.309

 54, 86.948, 20.073       64, 61.740, 3.411

■ 54, 87.202, 20.413

■ 69, 51.850, 1.120

■ 75, 41.302,  
359.275

■ 81, 30.529,  
357.757

■ 87, 19.838,  
356.476

■ 94, 9.425, 355.355

100, 0.225,  
202.332

# Harmonies

# Complementary

The Complementary color scheme is a pair of colors which are on the opposite of each other on the color wheel.



57, 77.588, 9.992



90, 64.603, 164.148

# Rectangle

The Rectangle color scheme consists of four colors that form a rectangle on the color wheel.



57, 77.588, 9.992



57, 77.588, 59.992



57, 77.588, 189.992



57, 77.588, 239.992

# Sweetspot

The Sweet Spot groups the original color and five complimentary colors.



57, 77.584, 9.994



84, 24.806, 357.044



52, 109.269, 317.189



43, 17.129, 357.509



0, 0.000, 0.000



53, 0.007, 296.813



# Same Dimension

The Same Dimension uses a secret algorithm to generate beautiful new colors.



57, 77.584, 9.994



54, 85.432, 17.629



60, 82.013, 40.611



50, 5.727, 355.368



40, 70.008, 19.337



10, 31.384, 11.232





# Inverse Universe

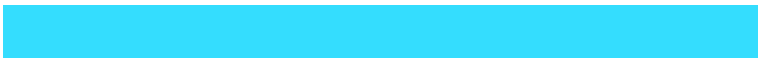
The Inverse Universe completely reimagines the original color for something new.



57, 77.584, 9.994



54, 85.432, 17.629



82, 41.431, 222.968



50, 5.727, 355.368



40, 70.008, 19.337



10, 31.384, 11.232



# Previews

## White Background



This preview shows how the CIELCh color 57, 77.588, 9.992 looks on a white background.

## Color Contrast Check

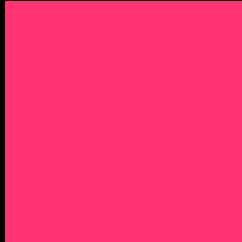
Large Text (above 18pt) WCAG AA ✓ Pass

Any Text WCAG AA ✗ Fail

Large Text (above 18pt) WCAG AAA ✗ Fail

Any Text WCAG AAA ✗ Fail

# Black Background



This preview shows how the CIELCh color 57, 77.588, 9.992 looks on a black background.

## Color Contrast Check

Large Text (above 18pt) WCAG AA ✓ Pass

Any Text WCAG AA ✓ Pass

Large Text (above 18pt) WCAG AAA ✓ Pass

Any Text WCAG AAA × Fail

If you want to check with other color combinations, try the [Color Contrast Checker](#).

**CIELCh 57, 77.588, 9.992**

## **Background**



This preview shows how black text looks on a background with the CIELCh color 57, 77.588, 9.992.



This preview shows how white text looks on a background with the CIELCh color 57, 77.588, 9.992.

# Color Blindness Simulation

Color vision deficiency is a very complex topic, and I could not describe the different causes any better than Wikipedia does, so if you want to learn more, you should check out their [article about color blindness](#).

## Dichromacy



### Original Color

57, 77.588, 9.992

### Protanopia

57, 13.714, 287.222

### Deuteranopia

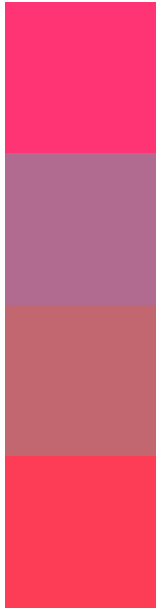
57, 18.386, 67.402



**Tritanopia**  
57, 81.256, 31.152



# Trichromacy



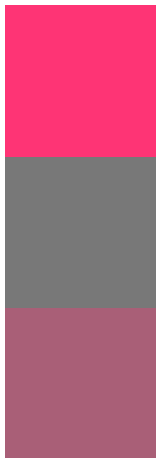
**Original Color**  
57, 77.588, 9.992

**Protanomaly**  
54, 34.733, 345.556

**Deuteranomaly**  
54, 38.928, 17.991

**Tritanomaly**  
57, 78.792, 23.725

# Monochromacy



**Original Color**  
57, 77.588, 9.992

**Achromatopsia**  
50, 0.007, 296.813

**Achromatomaly**  
49, 33.024, 359.606

# CSS Examples

## Text

The CSS property to change the color of the text to CIELCh 57, 77.588, 9.992 is called "color". The color property can be set on classes, ids or directly on the HTML element.

This example shows how text in the color `rgb(254, 52, 117)` looks like.

```
.text, #text, p{  
    color:rgb(254, 52, 117)  
}
```

If you want to add a text shadow in that color use the text-shadow property, you can generate a text shadow directly with our [CSS Text Shadow Generator](#).

Here you see how black text with a 4 pixel rgb(254, 52, 117) colored shadow looks like.

```
.shadow{ text-shadow: 4px 4px 2px rgb(254, 52, 117) }
```

## Border

The CSS property to change the border of an element to CIELCh 57, 77.588, 9.992 is called "border". The border property can be set on classes, ids or directly on the HTML element.

This example shows the color as border, it can be applied via the CSS property "border" or "border-color".

```
.border, #border, table{ border:4px solid rgb(254, 52, 117) }
```

If only the border color should be changed use the property `border-color`.

```
.border{ border-color:rgb(254, 52, 117) }
```

If you want to add a box shadow in that color use:

Here you see how a box with a 4 pixel `rgb(254, 52, 117)` colored shadow looks like.

```
.boxshadow{ -moz-box-shadow:4px 4px 4px  
4px rgb(254, 52, 117); -webkit-box-  
shadow:4px 4px 4px 4px rgb(254, 52, 117);  
box-shadow:4px 4px 4px 4px rgb(254, 52,  
117) }
```

# Background

The CSS property to change the background color of an element to CIELCh 57, 77.588, 9.992 is called "background". The background property can be set on classes, ids or directly on the HTML element.

```
.background, #background, body{  
background: rgb(254, 52, 117) }
```

If only the background color should be changed can be used:

```
.background{ background-color: rgb(254, 52,  
117) }
```

This example shows the color as background, it is applied via the CSS property "background".

To optimize and compress your CSS code, you can use our [online CSS compressor and optimizer](#) based on csstidy. If you want to create a linear or radial gradient as background or border, check our [CSS Gradient Generator](#).

Hey! You found this booklet interesting? Support Converting Colors with the new Membership Option!

The pro membership hides all ads, plus gives you double the colors in the color bucket, and more awesome pro features!

**[Learn more, Memberships starting at \\$2.50/m!](#)**

**Follow me  
on Twitter!**

@ConvertingColor