

Converting Colors

CIELCh(57, 78.073, 5.029)

Have a look what the booklet for
CIELCh(57, 78.073, 5.029) contains.

CIELCh(57, 78.023, 5.190)	3
<i>Conversions</i>	4
<i>Details</i>	6
<i>Harmonies</i>	11
<i>Previews</i>	20
<i>Color Blindness Simulation</i>	23
<i>CSS Examples</i>	26

Color

CIELCh(57, 78.023, 5.190)

Conversions

Conversions Part 1

Format	Color
Hex	FE3280
RGB	254, 50, 128
RGB Percent	100%, 20%, 50%
CMY	0.0038, 0.8037, 0.4979
CMYK	0.00, 0.80, 0.50, 0.00
HSL	337°, 99%, 60%
HSV	337°, 80%, 100%
XYZ	45.9279, 24.9227, 22.8226
YIQ	119.8880, 96.5460, 67.5060

Conversions

Conversions Part 2

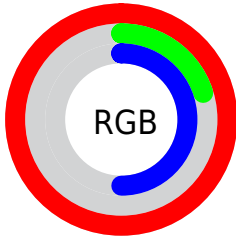
Format	Color
R_{YB}	254, 50, 128
Decimal	16659072
CIE Lab	57.00, 77.70, 7.06
CIE LCh	57, 78.023, 5.190
Yxy	24.9227, 0.4903, 0.2661
Android (android.graphics.Color)	4294849152 (0xFFFE3280)
YUV	119.8880, 3.9992, 117.6162
Hunter-Lab	49.9226, 76.8523, 7.8408

Details

The CIELCh color **57, 78.023, 5.190** is a dark color, and the websafe version is hex **FF0066**. The color can be described as middle washed rose. A complement of this color would be **89, 69.412, 159.788**, and the grayscale version is **50, 0.007, 296.813**.

A 20% lighter version of the original color is **68, 59.606, 352.101**, and **41, 68.113, 10.479** is the 20% darker color. If you saturate the color by 10%, you get **55, 82.362, 9.525**, and if you desaturate by 10%, it is **60, 71.638, 1.763**.

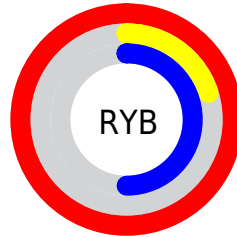
Distribution



Red (100%)

Green (20%)

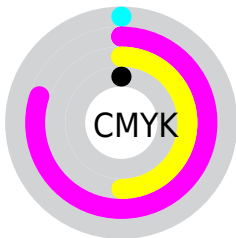
Blue (50%)



Red (100%)

Yellow (20%)

Blue (50%)

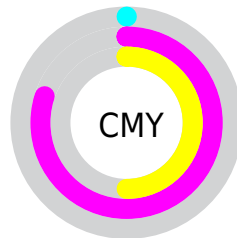


Cyan (0%)

Magenta (80%)

Yellow (50%)

Black (0%)



Cyan (0%)

Magenta (80%)

Yellow (50%)

Brightness & Saturation Gradients

These gradients show how the CIELCh color 57, 78.023, 5.190 changes by changing the brightness by 10 percent. The first figure shows a shift by +10% for each color and the second figure -10%.

Similar to the brightness gradients but the following saturation gradients show a change of the CIELCh color 57, 78.023, 5.190 by changing the saturation by 10% instead.

 57, 78.023, 5.190  57, 78.023, 5.190

 100, 78.023, 5.190  47, 78.023, 5.190

 77, 78.023, 5.190  37, 78.023, 5.190


 87, 78.023, 5.190  27, 78.023, 5.190

 97, 78.023, 5.190  17, 78.023, 5.190

 7, 78.023, 5.190

 0, 78.023, 5.190

 57, 78.023, 5.190  57, 78.023, 5.190

 55, 82.362, 9.525  60, 71.638, 1.763

 54, 85.137, 14.555  64, 63.385,

359.069

69, 53.735,
356.928

74, 43.233,
355.191

80, 32.349,
353.747

86, 21.432,
352.516

93, 10.707,
351.431

99, 0.305, 348.787

100, 0.334,
201.368

Harmonies

Complementary

The Complementary color scheme is a pair of colors which are on the opposite of each other on the color wheel.



57, 78.023, 5.190



89, 69.412, 159.788

Rectangle

The Rectangle color scheme consists of four colors that form a rectangle on the color wheel.



57, 78.023, 5.190



57, 78.023, 55.190



57, 78.023, 185.190



57, 78.023, 235.190

Sweetspot

The Sweet Spot groups the original color and five complimentary colors.



57, 78.019, 5.192



84, 25.546, 352.952



50, 110.464, 315.713



43, 17.618, 353.394



0, 0.000, 0.000



53, 0.007, 296.813

Same Dimension

The Same Dimension uses a secret algorithm to generate beautiful new colors.



57, 78.019, 5.192



55, 84.290, 12.443



58, 85.034, 38.429



50, 5.925, 351.350



41, 68.582, 13.532



10, 31.283, 6.305

Inverse Universe

The Inverse Universe completely reimagines the original color for something new.



57, 78.019, 5.192



55, 84.290, 12.443



84, 42.533, 214.265



50, 5.925, 351.350



41, 68.582, 13.532



10, 31.283, 6.305

Previews

White Background



This preview shows how the CIELCh color 57, 78.023, 5.190 looks on a white background.

Color Contrast Check

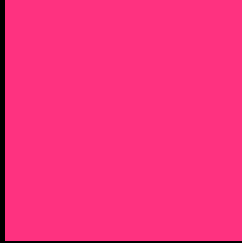
Large Text (above 18pt) WCAG AA ✓ Pass

Any Text WCAG AA ✗ Fail

Large Text (above 18pt) WCAG AAA ✗ Fail

Any Text WCAG AAA ✗ Fail

Black Background



This preview shows how the CIELCh color 57, 78.023, 5.190 looks on a black background.

Color Contrast Check

Large Text (above 18pt) WCAG AA ✓ Pass

Any Text WCAG AA ✓ Pass

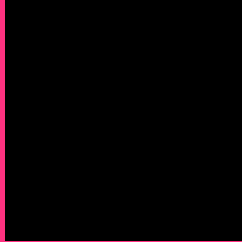
Large Text (above 18pt) WCAG AAA ✓ Pass

Any Text WCAG AAA × Fail

If you want to check with other color combinations, try the [Color Contrast Checker](#).

CIELCh 57, 78.023, 5.190

Background



This preview shows how black text looks on a background with the CIELCh color 57, 78.023, 5.190.



This preview shows how white text looks on a background with the CIELCh color 57, 78.023, 5.190.

Color Blindness Simulation

Color vision deficiency is a very complex topic, and I could not describe the different causes any better than Wikipedia does, so if you want to learn more, you should check out their [article about color blindness](#).

Dichromacy



Original Color

57, 78.023, 5.190

Protanopia

57, 22.359, 284.847

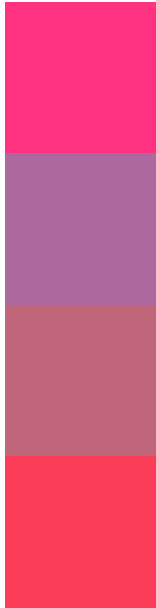
Deuteranopia

57, 13.275, 56.755



Tritanopia
57, 80.218, 31.152

Trichromacy



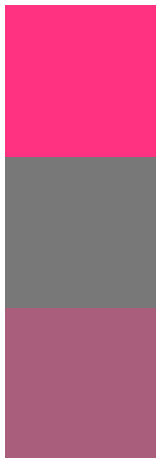
Original Color
57, 78.023, 5.190

Protanomaly
53, 39.167, 333.857

Deuteranomaly
54, 38.434, 7.790

Tritanomaly
57, 77.526, 22.215

Monochromacy



Original Color
57, 78.023, 5.190

Achromatopsia
50, 0.007, 296.813

Achromatomaly
50, 33.679, 355.836

CSS Examples

Text

The CSS property to change the color of the text to CIELCh 57, 78.023, 5.190 is called "color". The color property can be set on classes, ids or directly on the HTML element.

This example shows how text in the color `rgb(254, 50, 128)` looks like.

```
.text, #text, p{  
    color:rgb(254, 50, 128)  
}
```

If you want to add a text shadow in that color use the text-shadow property, you can generate a text shadow directly with our [CSS Text Shadow Generator](#).

Here you see how black text with a 4 pixel rgb(254, 50, 128) colored shadow looks like.

```
.shadow{ text-shadow: 4px 4px 2px rgb(254, 50, 128) }
```

Border

The CSS property to change the border of an element to CIELCh 57, 78.023, 5.190 is called "border". The border property can be set on classes, ids or directly on the HTML element.

This example shows the color as border, it can be applied via the CSS property "border" or "border-color".

```
.border, #border, table{ border:4px solid rgb(254, 50, 128) }
```

If only the border color should be changed use the property `border-color`.

```
.border{ border-color:rgb(254, 50, 128) }
```

If you want to add a box shadow in that color use:

Here you see how a box with a 4 pixel `rgb(254, 50, 128)` colored shadow looks like.

```
.boxshadow{ -moz-box-shadow:4px 4px 4px  
4px rgb(254, 50, 128); -webkit-box-  
shadow:4px 4px 4px 4px rgb(254, 50, 128);  
box-shadow:4px 4px 4px 4px rgb(254, 50,  
128) }
```

Background

The CSS property to change the background color of an element to CIELCh 57, 78.023, 5.190 is called "background". The background property can be set on classes, ids or directly on the HTML element.

```
.background, #background, body{  
background: rgb(254, 50, 128) }
```

If only the background color should be changed can be used:

```
.background{ background-color: rgb(254, 50,  
128) }
```

This example shows the color as background, it is applied via the CSS property "background".

To optimize and compress your CSS code, you can use our [online CSS compressor and optimizer](#) based on csstidy. If you want to create a linear or radial gradient as background or border, check our [CSS Gradient Generator](#).

Hey! You found this booklet interesting? Support Converting Colors with the new Membership Option!

The pro membership hides all ads, plus gives you double the colors in the color bucket, and more awesome pro features!

[Learn more, Memberships starting at \\$2.50/m!](#)

**Follow me
on Twitter!**

@ConvertingColor