

Converting Colors

CIELCh(57, 78.155, 17.325)

Have a look what the booklet for
CIELCh(57, 78.155, 17.325) contains.

CIELCh(57, 78.155, 17.325)	3
<i>Conversions</i>	4
<i>Details</i>	6
<i>Harmonies</i>	11
<i>Previews</i>	20
<i>Color Blindness Simulation</i>	23
<i>CSS Examples</i>	26

Color

CIELCh(57, 78.155, 17.325)

Conversions

Conversions Part 1

Format	Color
Hex	FF3865
RGB	255, 56, 101
RGB Percent	100%, 22%, 40%
CMY	0.0013, 0.7818, 0.6049
CMYK	0.00, 0.78, 0.60, 0.00
HSL	346°, 100%, 61%
HSV	346°, 78%, 100%
XYZ	44.8500, 24.9227, 14.6947
YIQ	120.6310, 104.1590, 56.1830

Conversions

Conversions Part 2

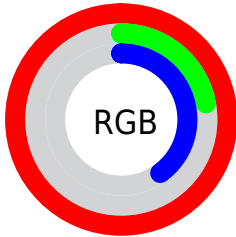
Format	Color
R_{YB}	255, 56, 101
Decimal	16726117
CIE _{Lab}	57.00, 74.61, 23.27
CIE _{LCh}	57, 78.155, 17.325
Yxy	24.9227, 0.5310, 0.2951
Android (android.graphics.Color)	4294916197 (0xFFFF3865)
YUV	120.6310, -9.6781, 117.8416
Hunter-Lab	49.9226, 72.9981, 17.4938

Details

The CIELCh color **57, 78.155, 17.325** is a dark color, and the websafe version is hex **FF3366**. The color can be described as middle washed rose. A complement of this color would be **90, 57.916, 171.913**, and the grayscale version is **51, 0.007, 296.813**.

A 20% lighter version of the original color is **67, 54.462, 8.536**, and **40, 71.038, 22.337** is the 20% darker color. If you saturate the color by 10%, you get **55, 85.190, 22.123**, and if you desaturate by 10%, it is **60, 69.746, 13.419**.

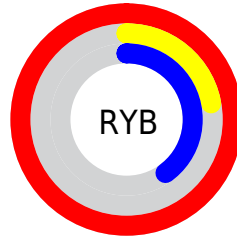
Distribution



Red (100%)

Green (22%)

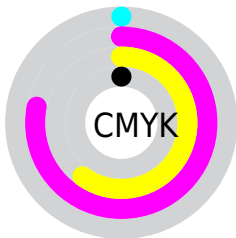
Blue (40%)



Red (100%)

Yellow (22%)

Blue (40%)

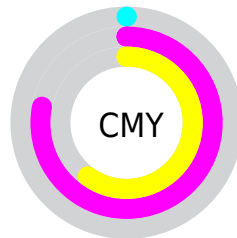


Cyan (0%)

Magenta (78%)

Yellow (60%)

Black (0%)



Cyan (0%)

Magenta (78%)

Yellow (60%)


Brightness & Saturation Gradients

These gradients show how the CIELCh color 57, 78.155, 17.325 changes by changing the brightness by 10 percent. The first figure shows a shift by +10% for each color and the second figure -10%.

Similar to the brightness gradients but the following saturation gradients show a change of the CIELCh color 57, 78.155, 17.325 by changing the saturation by 10% instead.

 57, 78.155, 17.325

 57, 78.155, 17.325

 100, 78.155,
17.325

 47, 78.155, 17.325

 77, 78.155, 17.325

 37, 78.155, 17.325

 87, 78.155, 17.325

 27, 78.155, 17.325

 97, 78.155, 17.325

 17, 78.155, 17.325

 7, 78.155, 17.325

 0, 78.155, 17.325

 57, 78.155, 17.325

 57, 78.155, 17.325

 55, 85.190, 22.123

 60, 69.746, 13.419

 54, 91.080, 27.598

 65, 60.147, 10.326

■ 53, 92.154, 28.582

■ 70, 49.758, 7.889

■ 75, 39.023, 5.948

■ 81, 28.308, 4.375

■ 88, 17.863, 3.068

■ 94, 7.831, 1.935

100, 0.115,
205.155

Harmonies

Complementary

The Complementary color scheme is a pair of colors which are on the opposite of each other on the color wheel.



57, 78.155, 17.325



90, 57.916, 171.913

Rectangle

The Rectangle color scheme consists of four colors that form a rectangle on the color wheel.



57, 78.155, 17.325



57, 78.155, 67.325



57, 78.155, 197.325



57, 78.155, 247.325

Sweetspot

The Sweet Spot groups the original color and five complimentary colors.



57, 78.151, 17.327



85, 22.902, 3.673



56, 107.627, 320.281



43, 15.973, 4.158



0, 0.000, 0.000



53, 0.007, 296.813

Same Dimension

The Same Dimension uses a secret algorithm to generate beautiful new colors.



57, 78.151, 17.327



54, 88.822, 25.285



64, 76.652, 46.396



50, 5.483, 2.083



40, 73.667, 27.529



10, 31.829, 17.329

Inverse Universe

The Inverse Universe completely reimagines the original color for something new.



57, 78.151, 17.327



54, 88.822, 25.285



76, 42.056, 240.982



50, 5.483, 2.083



40, 73.667, 27.529



10, 31.829, 17.329

Previews

White Background



This preview shows how the CIELCh color 57, 78.155, 17.325 looks on a white background.

Color Contrast Check

Large Text (above 18pt) WCAG AA ✓ Pass

Any Text WCAG AA ✗ Fail

Large Text (above 18pt) WCAG AAA ✗ Fail

Any Text WCAG AAA ✗ Fail

Black Background



This preview shows how the CIELCh color 57, 78.155, 17.325 looks on a black background.

Color Contrast Check

Large Text (above 18pt) WCAG AA ✓ Pass

Any Text WCAG AA ✓ Pass

Large Text (above 18pt) WCAG AAA ✓ Pass

Any Text WCAG AAA × Fail

If you want to check with other color combinations, try the [Color Contrast Checker](#).

CIELCh 57, 78.155, 17.325

Background



This preview shows how black text looks on a background with the CIELCh color 57, 78.155, 17.325.



This preview shows how white text looks on a background with the CIELCh color 57, 78.155, 17.325.

Color Blindness Simulation

Color vision deficiency is a very complex topic, and I could not describe the different causes any better than Wikipedia does, so if you want to learn more, you should check out their [article about color blindness](#).

Dichromacy



Original Color

57, 78.155, 17.325

Protanopia

57, 1.319, 353.611

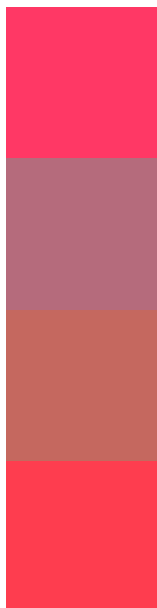
Deuteranopia

57, 27.363, 74.702



Tritanopia
57, 82.331, 31.683

Trichromacy



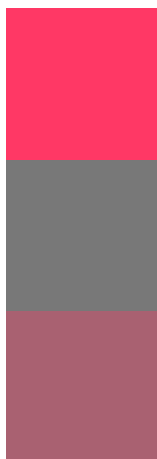
Original Color
57, 78.155, 17.325

Protanomaly
54, 31.782, 6.055

Deuteranomaly
55, 42.140, 31.205

Tritanomaly
57, 80.312, 26.640

Monochromacy



Original Color
57, 78.155, 17.325

Achromatopsia
50, 0.007, 296.813

Achromatomaly
50, 31.336, 6.888

CSS Examples

Text

The CSS property to change the color of the text to CIELCh 57, 78.155, 17.325 is called "color". The color property can be set on classes, ids or directly on the HTML element.

This example shows how text in the color `rgb(255, 56, 101)` looks like.

```
.text, #text, p{  
    color:rgb(255, 56, 101)  
}
```

If you want to add a text shadow in that color use the text-shadow property, you can generate a text shadow directly with our [CSS Text Shadow Generator](#).

Here you see how black text with a 4 pixel rgb(255, 56, 101) colored shadow looks like.

```
.shadow{ text-shadow: 4px 4px 2px rgb(255, 56, 101) }
```

Border

The CSS property to change the border of an element to CIELCh 57, 78.155, 17.325 is called "border". The border property can be set on classes, ids or directly on the HTML element.

This example shows the color as border, it can be applied via the CSS property "border" or "border-color".

```
.border, #border, table{ border:4px solid rgb(255, 56, 101) }
```

If only the border color should be changed use the property `border-color`.

```
.border{ border-color:rgb(255, 56, 101) }
```

If you want to add a box shadow in that color use:

Here you see how a box with a 4 pixel `rgb(255, 56, 101)` colored shadow looks like.

```
.boxshadow{ -moz-box-shadow:4px 4px 4px  
4px rgb(255, 56, 101); -webkit-box-  
shadow:4px 4px 4px 4px rgb(255, 56, 101);  
box-shadow:4px 4px 4px 4px rgb(255, 56,  
101) }
```

Background

The CSS property to change the background color of an element to CIELCh 57, 78.155, 17.325 is called "background". The background property can be set on classes, ids or directly on the HTML element.

```
.background, #background, body{  
background: rgb(255, 56, 101) }
```

If only the background color should be changed can be used:

```
.background{ background-color: rgb(255, 56,  
101) }
```

This example shows the color as background, it is applied via the CSS property "background".

To optimize and compress your CSS code, you can use our [online CSS compressor and optimizer](#) based on csstidy. If you want to create a linear or radial gradient as background or border, check our [CSS Gradient Generator](#).

Hey! You found this booklet interesting? Support Converting Colors with the new Membership Option!

The pro membership hides all ads, plus gives you double the colors in the color bucket, and more awesome pro features!

[Learn more, Memberships starting at \\$2.50/m!](#)

**Follow me
on Twitter!**

@ConvertingColor