

Converting Colors

CIELCh(57, 78.167, 3.498)

Have a look what the booklet for
CIELCh(57, 78.167, 3.498) contains.

CIELCh(57, 78.164, 3.545)	3
<i>Conversions</i>	4
<i>Details</i>	6
<i>Harmonies</i>	11
<i>Previews</i>	20
<i>Color Blindness Simulation</i>	23
<i>CSS Examples</i>	26

Color

CIELCh(57, 78.164, 3.545)

Conversions

Conversions Part 1

Format	Color
Hex	FE3284
RGB	254, 50, 132
RGB Percent	100%, 20%, 52%
CMY	0.0051, 0.8054, 0.4833
CMYK	0.00, 0.80, 0.48, 0.01
HSL	336°, 99%, 59%
HSV	336°, 80%, 99%
XYZ	46.0373, 24.9227, 24.1289
YIQ	120.3440, 95.2620, 68.7500

Conversions

Conversions Part 2

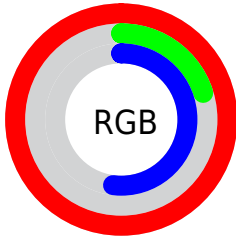
Format	Color
R_{YB}	254, 50, 132
Decimal	16659076
CIE _{Lab}	57.00, 78.01, 4.83
CIE _{LCh}	57, 78.164, 3.545
Yxy	24.9227, 0.4842, 0.2621
Android (android.graphics.Color)	4294849156 (0xFFFE3284)
YUV	120.3440, 5.7464, 117.2163
Hunter-Lab	49.9226, 77.2435, 6.2894

Details

The CIELCh color **57, 78.164, 3.545** is a dark color, and the websafe version is hex **FF3399**. The color can be described as middle washed rose. A complement of this color would be **89, 70.920, 158.486**, and the grayscale version is **50, 0.007, 296.813**.

A 20% lighter version of the original color is **68, 59.925, 350.391**, and **41, 67.971, 8.437** is the 20% darker color. If you saturate the color by 10%, you get **55, 82.228, 7.744**, and if you desaturate by 10%, it is **60, 71.968, 0.233**.

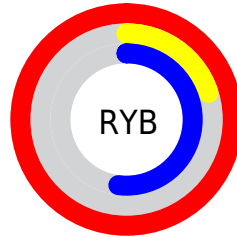
Distribution



Red (100%)

Green (20%)

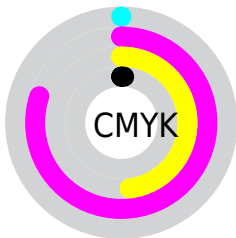
Blue (52%)



Red (100%)

Yellow (20%)

Blue (52%)

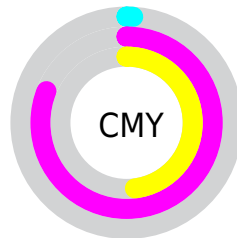


Cyan (0%)

Magenta (80%)

Yellow (48%)

Black (1%)



Cyan (1%)

Magenta (81%)

Yellow (48%)

Brightness & Saturation Gradients

These gradients show how the CIELCh color 57, 78.164, 3.545 changes by changing the brightness by 10 percent. The first figure shows a shift by +10% for each color and the second figure -10%.

Similar to the brightness gradients but the following saturation gradients show a change of the CIELCh color 57, 78.164, 3.545 by changing the saturation by 10% instead.

 57, 78.164, 3.545  57, 78.164, 3.545

 100, 78.164, 3.545  47, 78.164, 3.545

 77, 78.164, 3.545  37, 78.164, 3.545


 87, 78.164, 3.545  27, 78.164, 3.545

 97, 78.164, 3.545  17, 78.164, 3.545

 7, 78.164, 3.545

 0, 78.164, 3.545

 57, 78.164, 3.545  57, 78.164, 3.545

 55, 82.228, 7.744  60, 71.968, 0.233

 54, 84.630, 12.563  64, 63.830,

357.628

69, 54.232,
355.552

74, 43.727,
353.863

80, 32.800,
352.452

86, 21.806,
351.245

93, 10.980,
350.178

99, 0.459, 348.153

100, 0.451,
200.848

Harmonies

Complementary

The Complementary color scheme is a pair of colors which are on the opposite of each other on the color wheel.



57, 78.164, 3.545



89, 70.920, 158.486

Rectangle

The Rectangle color scheme consists of four colors that form a rectangle on the color wheel.



57, 78.164, 3.545



57, 78.164, 53.545



57, 78.164, 183.545



57, 78.164, 233.545

Sweetspot

The Sweet Spot groups the original color and five complimentary colors.



57, 78.160, 3.546



84, 25.820, 351.656



49, 110.859, 314.774



43, 17.800, 352.088



0, 0.000, 0.000



53, 0.007, 296.813

Same Dimension

The Same Dimension uses a secret algorithm to generate beautiful new colors.



57, 78.160, 3.546



55, 84.235, 11.030



57, 86.417, 37.120



50, 5.997, 350.082



41, 68.296, 11.570



10, 31.306, 4.580

Inverse Universe

The Inverse Universe completely reimagines the original color for something new.



57, 78.160, 3.546



55, 84.235, 11.030



86, 43.647, 208.716



50, 5.997, 350.082



41, 68.296, 11.570



10, 31.306, 4.580

Previews

White Background



This preview shows how the CIELCh color 57, 78.164, 3.545 looks on a white background.

Color Contrast Check

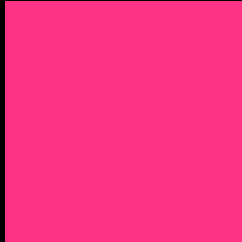
Large Text (above 18pt) WCAG AA ✓ Pass

Any Text WCAG AA ✗ Fail

Large Text (above 18pt) WCAG AAA ✗ Fail

Any Text WCAG AAA ✗ Fail

Black Background



This preview shows how the CIELCh color 57, 78.164, 3.545 looks on a black background.

Color Contrast Check

Large Text (above 18pt) WCAG AA ✓ Pass

Any Text WCAG AA ✓ Pass

Large Text (above 18pt) WCAG AAA ✓ Pass

Any Text WCAG AAA × Fail

If you want to check with other color combinations, try the [Color Contrast Checker](#).

CIELCh 57, 78.164, 3.545

Background



This preview shows how black text looks on a background with the CIELCh color 57, 78.164, 3.545.

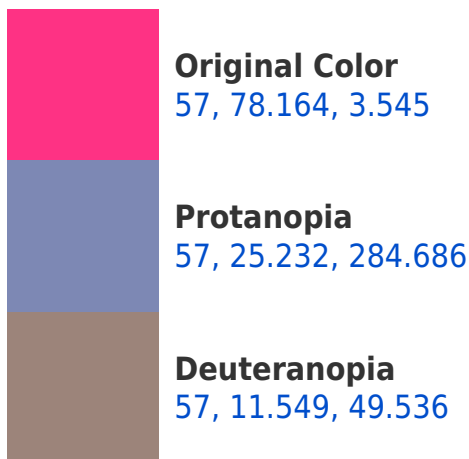


This preview shows how white text looks on a background with the CIELCh color 57, 78.164, 3.545.

Color Blindness Simulation

Color vision deficiency is a very complex topic, and I could not describe the different causes any better than Wikipedia does, so if you want to learn more, you should check out their [article about color blindness](#).

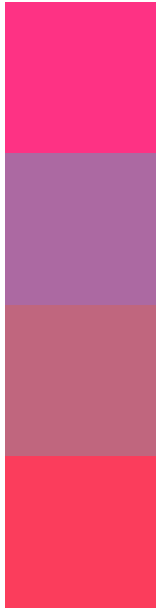
Dichromacy





Tritanopia
57, 79.381, 30.958

Trichromacy



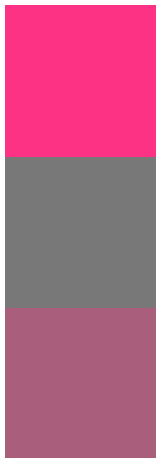
Original Color
57, 78.164, 3.545

Protanomaly
53, 40.571, 331.177

Deuteranomaly
54, 38.690, 4.457

Tritanomaly
57, 76.851, 21.297

Monochromacy



Original Color
57, 78.164, 3.545

Achromatopsia
50, 0.007, 296.813

Achromatomaly
49, 34.439, 354.470

CSS Examples

Text

The CSS property to change the color of the text to CIELCh 57, 78.164, 3.545 is called "color". The color property can be set on classes, ids or directly on the HTML element.

This example shows how text in the color `rgb(254, 50, 132)` looks like.

```
.text, #text, p{  
    color:rgb(254, 50, 132)  
}
```

If you want to add a text shadow in that color use the text-shadow property, you can generate a text shadow directly with our [CSS Text Shadow Generator](#).

Here you see how black text with a 4 pixel rgb(254, 50, 132) colored shadow looks like.

```
.shadow{ text-shadow: 4px 4px 2px rgb(254, 50, 132) }
```

Border

The CSS property to change the border of an element to CIELCh 57, 78.164, 3.545 is called "border". The border property can be set on classes, ids or directly on the HTML element.

This example shows the color as border, it can be applied via the CSS property "border" or "border-color".

```
.border, #border, table{ border:4px solid rgb(254, 50, 132) }
```

If only the border color should be changed use the property `border-color`.

```
.border{ border-color:rgb(254, 50, 132) }
```

If you want to add a box shadow in that color use:

Here you see how a box with a 4 pixel `rgb(254, 50, 132)` colored shadow looks like.

```
.boxshadow{ -moz-box-shadow:4px 4px 4px  
4px rgb(254, 50, 132); -webkit-box-  
shadow:4px 4px 4px 4px rgb(254, 50, 132);  
box-shadow:4px 4px 4px 4px rgb(254, 50,  
132) }
```

Background

The CSS property to change the background color of an element to CIELCh 57, 78.164, 3.545 is called "background". The background property can be set on classes, ids or directly on the HTML element.

```
.background, #background, body{  
background: rgb(254, 50, 132) }
```

If only the background color should be changed can be used:

```
.background{ background-color: rgb(254, 50,  
132) }
```

This example shows the color as background, it is applied via the CSS property "background".

To optimize and compress your CSS code, you can use our [online CSS compressor and optimizer](#) based on csstidy. If you want to create a linear or radial gradient as background or border, check our [CSS Gradient Generator](#).

Hey! You found this booklet interesting? Support Converting Colors with the new Membership Option!

The pro membership hides all ads, plus gives you double the colors in the color bucket, and more awesome pro features!

[Learn more, Memberships starting at \\$2.50/m!](#)

**Follow me
on Twitter!**

@ConvertingColor