

Converting Colors

CIELCh(57, 78.209, 3.742)

Have a look what the booklet for
CIELCh(57, 78.209, 3.742) contains.

CIELCh(57, 78.349, 3.857)	3
<i>Conversions</i>	4
<i>Details</i>	6
<i>Harmonies</i>	11
<i>Previews</i>	20
<i>Color Blindness Simulation</i>	23
<i>CSS Examples</i>	26

Color

CIELCh(57, 78.349, 3.857)

Conversions

Conversions Part 1

Format	Color
Hex	FE3183
RGB	254, 49, 131
RGB Percent	100%, 19%, 51%
CMY	0.0037, 0.8075, 0.4861
CMYK	0.00, 0.81, 0.48, 0.00
HSL	336°, 99%, 59%
HSV	336°, 81%, 100%
XYZ	46.0926, 24.9227, 23.8684
YIQ	119.6430, 95.8580, 68.9620

Conversions

Conversions Part 2

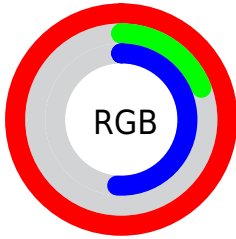
Format	Color
R_{YB}	254, 49, 131
Decimal	16658819
CIE _{Lab}	57.00, 78.17, 5.27
CIE _{LCh}	57, 78.349, 3.857
Yxy	24.9227, 0.4858, 0.2627
Android (android.graphics.Color)	4294848899 (0xFFFE3183)
YUV	119.6430, 5.5990, 117.8311
Hunter-Lab	49.9226, 77.4412, 6.5988

Details

The CIELCh color **57, 78.349, 3.857** is a dark color, and the websafe version is hex **FF3399**. The color can be described as middle washed rose. A complement of this color would be **89, 70.940, 158.597**, and the grayscale version is **50, 0.007, 296.813**.

A 20% lighter version of the original color is **68, 60.210, 350.685**, and **41, 67.997, 8.948** is the 20% darker color. If you saturate the color by 10%, you get **55, 82.398, 8.100**, and if you desaturate by 10%, it is **60, 72.179, 0.508**.

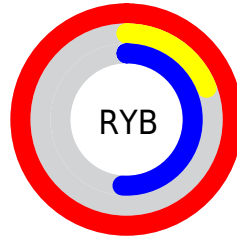
Distribution



Red (100%)

Green (19%)

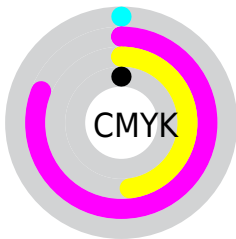
Blue (51%)



Red (100%)

Yellow (19%)

Blue (51%)

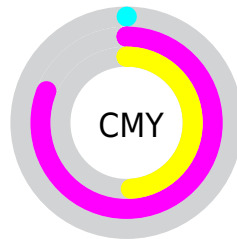


Cyan (0%)

Magenta (81%)

Yellow (48%)

Black (0%)



Cyan (0%)

Magenta (81%)

Yellow (49%)

Brightness & Saturation Gradients

These gradients show how the CIELCh color 57, 78.349, 3.857 changes by changing the brightness by 10 percent. The first figure shows a shift by +10% for each color and the second figure -10%.


Similar to the brightness gradients but the following saturation gradients show a change of the CIELCh color 57, 78.349, 3.857 by changing the saturation by 10% instead.

 57, 78.349, 3.857  57, 78.349, 3.857

 100, 78.349, 3.857  47, 78.349, 3.857

 77, 78.349, 3.857  37, 78.349, 3.857

 87, 78.349, 3.857  27, 78.349, 3.857

 97, 78.349, 3.857  17, 78.349, 3.857

 7, 78.349, 3.857

 0, 78.349, 3.857

 57, 78.349, 3.857  57, 78.349, 3.857

 55, 82.398, 8.100  60, 72.179, 0.508

 54, 84.767, 12.825  64, 64.065,

357.874

69, 54.482,
355.778

74, 43.986,
354.074

80, 33.059,
352.653

86, 22.063,
351.437

93, 11.233,
350.365

99, 0.709, 348.738

100, 0.329,
201.397

Harmonies

Complementary

The Complementary color scheme is a pair of colors which are on the opposite of each other on the color wheel.



57, 78.349, 3.857



89, 70.940, 158.597

Rectangle

The Rectangle color scheme consists of four colors that form a rectangle on the color wheel.



57, 78.349, 3.857



57, 78.349, 53.857



57, 78.349, 183.857



57, 78.349, 233.857

Sweetspot

The Sweet Spot groups the original color and five complimentary colors.



57, 78.345, 3.859



84, 25.784, 351.822



50, 111.000, 315.234



43, 17.776, 352.255



0, 0.000, 0.000



53, 0.007, 296.813

Same Dimension

The Same Dimension uses a secret algorithm to generate beautiful new colors.



57, 78.345, 3.859



55, 84.269, 11.282



58, 86.141, 37.826



50, 5.988, 350.244



41, 68.328, 11.824



10, 31.301, 4.803

Inverse Universe

The Inverse Universe completely reimagines the original color for something new.



57, 78.345, 3.859



55, 84.269, 11.282



85, 43.118, 211.488



50, 5.988, 350.244



41, 68.328, 11.824



10, 31.301, 4.803

Previews

White Background



This preview shows how the CIELCh color 57, 78.349, 3.857 looks on a white background.

Color Contrast Check

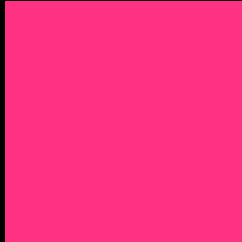
Large Text (above 18pt) WCAG AA ✓ Pass

Any Text WCAG AA ✗ Fail

Large Text (above 18pt) WCAG AAA ✗ Fail

Any Text WCAG AAA ✗ Fail

Black Background



This preview shows how the CIELCh color 57, 78.349, 3.857 looks on a black background.

Color Contrast Check

Large Text (above 18pt) WCAG AA ✓ Pass

Any Text WCAG AA ✓ Pass

Large Text (above 18pt) WCAG AAA ✓ Pass

Any Text WCAG AAA × Fail

If you want to check with other color combinations, try the [Color Contrast Checker](#).

CIELCh 57, 78.349, 3.857

Background



This preview shows how black text looks on a background with the CIELCh color 57, 78.349, 3.857.



This preview shows how white text looks on a background with the CIELCh color 57, 78.349, 3.857.

Color Blindness Simulation

Color vision deficiency is a very complex topic, and I could not describe the different causes any better than Wikipedia does, so if you want to learn more, you should check out their [article about color blindness](#).

Dichromacy



Original Color

57, 78.349, 3.857

Protanopia

57, 24.674, 284.404

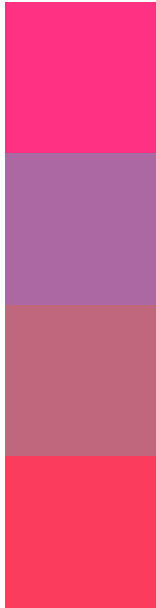
Deuteranopia

57, 11.868, 51.805



Tritanopia
57, 79.974, 30.804

Trichromacy



Original Color
57, 78.349, 3.857

Protanomaly
53, 41.212, 331.136

Deuteranomaly
54, 38.612, 5.285

Tritanomaly
57, 77.431, 21.239

Monochromacy



Original Color
57, 78.349, 3.857

Achromatopsia
50, 0.007, 296.813

Achromatomaly
49, 34.439, 354.470

CSS Examples

Text

The CSS property to change the color of the text to CIELCh 57, 78.349, 3.857 is called "color". The color property can be set on classes, ids or directly on the HTML element.

This example shows how text in the color `rgb(254, 49, 131)` looks like.

```
.text, #text, p{  
    color:rgb(254, 49, 131)  
}
```

If you want to add a text shadow in that color use the text-shadow property, you can generate a text shadow directly with our [CSS Text Shadow Generator](#).

Here you see how black text with a 4 pixel rgb(254, 49, 131) colored shadow looks like.

```
.shadow{ text-shadow: 4px 4px 2px rgb(254, 49, 131) }
```

Border

The CSS property to change the border of an element to CIELCh 57, 78.349, 3.857 is called "border". The border property can be set on classes, ids or directly on the HTML element.

This example shows the color as border, it can be applied via the CSS property "border" or "border-color".

```
.border, #border, table{ border:4px solid rgb(254, 49, 131) }
```

If only the border color should be changed use the property `border-color`.

```
.border{ border-color:rgb(254, 49, 131) }
```

If you want to add a box shadow in that color use:

Here you see how a box with a 4 pixel `rgb(254, 49, 131)` colored shadow looks like.

```
.boxshadow{ -moz-box-shadow:4px 4px 4px  
4px rgb(254, 49, 131); -webkit-box-  
shadow:4px 4px 4px 4px rgb(254, 49, 131);  
box-shadow:4px 4px 4px 4px rgb(254, 49,  
131) }
```

Background

The CSS property to change the background color of an element to CIELCh 57, 78.349, 3.857 is called "background". The background property can be set on classes, ids or directly on the HTML element.

```
.background, #background, body{  
background: rgb(254, 49, 131) }
```

If only the background color should be changed can be used:

```
.background{ background-color: rgb(254, 49,  
131) }
```

This example shows the color as background, it is applied via the CSS property "background".

To optimize and compress your CSS code, you can use our [online CSS compressor and optimizer](#) based on csstidy. If you want to create a linear or radial gradient as background or border, check our [CSS Gradient Generator](#).

Hey! You found this booklet interesting? Support Converting Colors with the new Membership Option!

The pro membership hides all ads, plus gives you double the colors in the color bucket, and more awesome pro features!

[Learn more, Memberships starting at \\$2.50/m!](#)

**Follow me
on Twitter!**

@ConvertingColor