

Converting Colors

CIELCh(57, 78.532, 13.526)

Have a look what the booklet for
CIELCh(57, 78.532, 13.526) contains.

CIELCh(57, 78.292, 13.487)	3
<i>Conversions</i>	4
<i>Details</i>	6
<i>Harmonies</i>	11
<i>Previews</i>	20
<i>Color Blindness Simulation</i>	23
<i>CSS Examples</i>	26

Color

CIELCh(57, 78.292, 13.487)

Conversions

Conversions Part 1

Format	Color
Hex	FF346D
RGB	255, 52, 109
RGB Percent	100%, 20%, 43%
CMY	0.0000, 0.7944, 0.5716
CMYK	0.00, 0.79, 0.57, 0.00
HSL	343°, 100%, 60%
HSV	343°, 79%, 100%
XYZ	45.3787, 24.9227, 16.9565
YIQ	119.1950, 102.6910, 60.7630

Conversions

Conversions Part 2

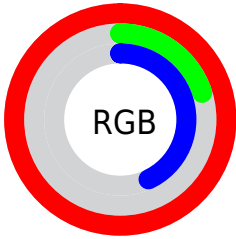
Format	Color
RYB	255, 52, 109
Decimal	16725101
CIELab	57.00, 76.13, 18.26
CIELCh	57, 78.292, 13.487
Yxy	24.9227, 0.5201, 0.2856
Android (android.graphics.Color)	4294915181 (0xFFFF346D)
YUV	119.1950, -5.0261, 119.1010
Hunter-Lab	49.9226, 74.8886, 14.8076

Details

The CIELCh color **57, 78.292, 13.487** is a dark color, and the websafe version is hex **FF3366**. The color can be described as middle washed rose. A complement of this color would be **90, 61.987, 167.201**, and the grayscale version is **50, 0.007, 296.813**.

A 20% lighter version of the original color is **67, 56.204, 3.130**, and **40, 69.833, 19.002** is the 20% darker color. If you saturate the color by 10%, you get **55, 84.158, 18.233**, and if you desaturate by 10%, it is **60, 70.623, 9.573**.

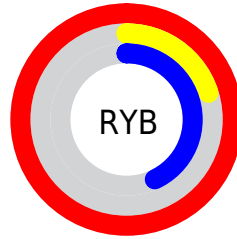
Distribution



Red (100%)

Green (20%)

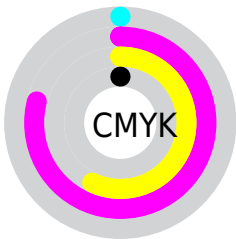
Blue (43%)



Red (100%)

Yellow (20%)

Blue (43%)

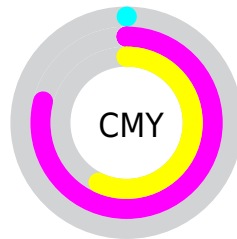


Cyan (0%)

Magenta (79%)

Yellow (57%)

Black (0%)



Cyan (0%)

Magenta (79%)

Yellow (57%)


Brightness & Saturation Gradients

These gradients show how the CIELCh color 57, 78.292, 13.487 changes by changing the brightness by 10 percent. The first figure shows a shift by +10% for each color and the second figure -10%.

Similar to the brightness gradients but the following saturation gradients show a change of the CIELCh color 57, 78.292, 13.487 by changing the saturation by 10% instead.

 57, 78.292, 13.487

 57, 78.292, 13.487

 100, 78.292,
13.487

 47, 78.292, 13.487

 77, 78.292, 13.487

 37, 78.292, 13.487

 87, 78.292, 13.487

 27, 78.292, 13.487

 97, 78.292, 13.487

 17, 78.292, 13.487

 7, 78.292, 13.487

 0, 78.292, 13.487

 57, 78.292, 13.487

 57, 78.292, 13.487

 55, 84.158, 18.233

 60, 70.623, 9.573

 54, 88.963, 23.786

 64, 61.606, 6.526

■ 54, 89.236, 24.090

■ 69, 51.554, 4.122

■ 75, 40.948, 2.199

■ 81, 30.198, 0.628

■ 87, 19.596,
359.314

■ 94, 9.323, 358.173

100, 0.012,
296.813

Harmonies

Complementary

The Complementary color scheme is a pair of colors which are on the opposite of each other on the color wheel.



57, 78.292, 13.487



90, 61.987, 167.201

Rectangle

The Rectangle color scheme consists of four colors that form a rectangle on the color wheel.



57, 78.292, 13.487



57, 78.292, 63.487



57, 78.292, 193.487



57, 78.292, 243.487

Sweetspot

The Sweet Spot groups the original color and five complimentary colors.



57, 78.185, 13.438



84, 24.394, 359.886



54, 109.128, 318.700



43, 16.860, 0.364



0, 0.000, 0.000



53, 0.007, 296.813

Same Dimension

The Same Dimension uses a secret algorithm to generate beautiful new colors.



57, 78.185, 13.438



54, 86.888, 21.276



62, 80.190, 43.340



50, 5.613, 358.179



40, 71.386, 23.000



10, 31.546, 14.072

Inverse Universe

The Inverse Universe completely reimagines the original color for something new.



57, 78.185, 13.438



54, 86.888, 21.276



79, 41.483, 232.234



50, 5.613, 358.179



40, 71.386, 23.000



10, 31.546, 14.072

Previews

White Background



This preview shows how the CIELCh color 57, 78.292, 13.487 looks on a white background.

Color Contrast Check

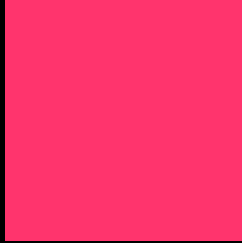
Large Text (above 18pt) WCAG AA ✓ Pass

Any Text WCAG AA ✗ Fail

Large Text (above 18pt) WCAG AAA ✗ Fail

Any Text WCAG AAA ✗ Fail

Black Background



This preview shows how the CIELCh color 57, 78.292, 13.487 looks on a black background.

Color Contrast Check

Large Text (above 18pt) WCAG AA ✓ Pass

Any Text WCAG AA ✓ Pass

Large Text (above 18pt) WCAG AAA ✓ Pass

Any Text WCAG AAA × Fail

If you want to check with other color combinations, try the [Color Contrast Checker](#).

CIELCh 57, 78.292, 13.487

Background



This preview shows how black text looks on a background with the CIELCh color 57, 78.292, 13.487.

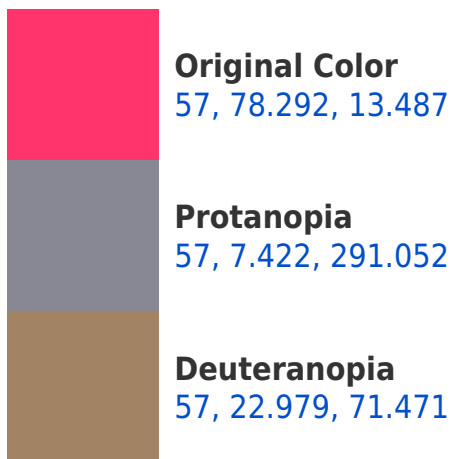


This preview shows how white text looks on a background with the CIELCh color 57, 78.292, 13.487.

Color Blindness Simulation

Color vision deficiency is a very complex topic, and I could not describe the different causes any better than Wikipedia does, so if you want to learn more, you should check out their [article about color blindness](#).

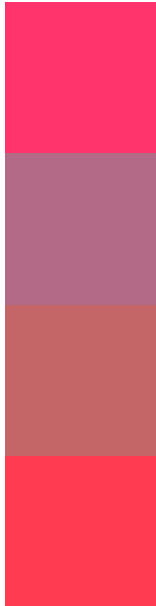
Dichromacy





Tritanopia
57, 82.778, 31.830

Trichromacy



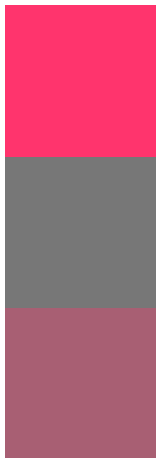
Original Color
57, 78.292, 13.487

Protanomaly
54, 33.142, 354.127

Deuteranomaly
54, 40.983, 23.913

Tritanomaly
57, 80.312, 25.557

Monochromacy



Original Color
57, 78.292, 13.487

Achromatopsia
50, 0.007, 296.813

Achromatomaly
49, 32.152, 3.190

CSS Examples

Text

The CSS property to change the color of the text to CIELCh 57, 78.292, 13.487 is called "color". The color property can be set on classes, ids or directly on the HTML element.

This example shows how text in the color `rgb(255, 52, 109)` looks like.

```
.text, #text, p{  
    color:rgb(255, 52, 109)  
}
```

If you want to add a text shadow in that color use the text-shadow property, you can generate a text shadow directly with our [CSS Text Shadow Generator](#).

Here you see how black text with a 4 pixel rgb(255, 52, 109) colored shadow looks like.

```
.shadow{ text-shadow: 4px 4px 2px rgb(255, 52, 109) }
```

Border

The CSS property to change the border of an element to CIELCh 57, 78.292, 13.487 is called "border". The border property can be set on classes, ids or directly on the HTML element.

This example shows the color as border, it can be applied via the CSS property "border" or "border-color".

```
.border, #border, table{ border:4px solid rgb(255, 52, 109) }
```

If only the border color should be changed use the property `border-color`.

```
.border{ border-color:rgb(255, 52, 109) }
```

If you want to add a box shadow in that color use:

Here you see how a box with a 4 pixel `rgb(255, 52, 109)` colored shadow looks like.

```
.boxshadow{ -moz-box-shadow:4px 4px 4px  
4px rgb(255, 52, 109); -webkit-box-  
shadow:4px 4px 4px 4px rgb(255, 52, 109);  
box-shadow:4px 4px 4px 4px rgb(255, 52,  
109) }
```

Background

The CSS property to change the background color of an element to CIELCh 57, 78.292, 13.487 is called "background". The background property can be set on classes, ids or directly on the HTML element.

```
.background, #background, body{  
background: rgb(255, 52, 109) }
```

If only the background color should be changed can be used:

```
.background{ background-color: rgb(255, 52,  
109) }
```

This example shows the color as background, it is applied via the CSS property "background".

To optimize and compress your CSS code, you can use our [online CSS compressor and optimizer](#) based on csstidy. If you want to create a linear or radial gradient as background or border, check our [CSS Gradient Generator](#).

Hey! You found this booklet interesting? Support Converting Colors with the new Membership Option!

The pro membership hides all ads, plus gives you double the colors in the color bucket, and more awesome pro features!

[Learn more, Memberships starting at \\$2.50/m!](#)

**Follow me
on Twitter!**

@ConvertingColor