

Converting Colors

CIELCh(58, 16.065, 71.475)

Have a look what the booklet for
CIELCh(58, 16.065, 71.475) contains.

CIELCh(58, 16.131, 73.108)	3
<i>Conversions</i>	4
<i>Details</i>	6
<i>Harmonies</i>	11
<i>Previews</i>	20
<i>Color Blindness Simulation</i>	23
<i>CSS Examples</i>	26

Color

CIELCh(58, 16.131, 73.108)

Conversions

Conversions Part 1

Format	Color
Hex	9E8871
RGB	158, 136, 113
RGB Percent	62%, 53%, 44%
CMY	0.3815, 0.4677, 0.5579
CMYK	0.00, 0.14, 0.29, 0.38
HSL	31°, 19%, 53%
HSV	31°, 29%, 62%
XYZ	25.7790, 25.9610, 19.1991
YIQ	139.9560, 20.4950, -2.4890

Conversions

Conversions Part 2

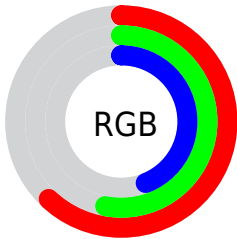
Format	Color
R_YB	156, 158, 113
Decimal	10389617
CIE _{Lab}	58.00, 4.69, 15.44
CIE _{LCh}	58, 16.131, 73.108
Yxy	25.9610, 0.3634, 0.3660
Android (android.graphics.Color)	4288579697 (0xFF9E8871)
YUV	139.9560, -13.2893, 15.8246
Hunter-Lab	50.9519, 1.1458, 13.3253

Details

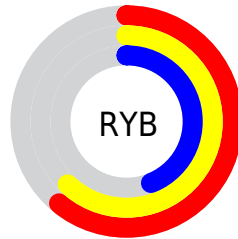
The CIELCh color $58, 16.131, 73.108$ is a dark color, and the websafe version is hex 999999 . A complement of this color would be $55, 15.024, 260.954$, and the grayscale version is $58, 0.007, 296.813$.

A 20% lighter version of the original color is $78, 15.981, 72.622$, and $38, 16.112, 72.127$ is the 20% darker color. If you saturate the color by 10%, you get $56, 22.277, 71.862$, and if you desaturate by 10%, it is $60, 10.244, 74.349$.

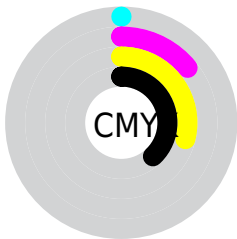
Distribution



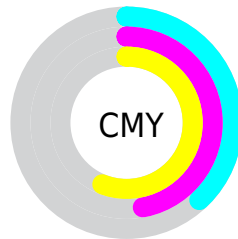
- Red (62%)
- Green (53%)
- Blue (44%)



- Red (61%)
- Yellow (62%)
- Blue (44%)



- Cyan (0%)
- Magenta (14%)
- Yellow (29%)
- Black (38%)



- Cyan (38%)
- Magenta (47%)
- Yellow (56%)


Brightness & Saturation Gradients

These gradients show how the CIELCh color 58, 16.131, 73.108 changes by changing the brightness by 10 percent. The first figure shows a shift by +10% for each color and the second figure -10%.

Similar to the brightness gradients but the following saturation gradients show a change of the CIELCh color 58, 16.131, 73.108 by changing the saturation by 10% instead.

 58, 16.131, 73.108

 58, 16.131, 73.108

 100, 16.131,
73.108

 48, 16.131, 73.108

 78, 16.131, 73.108

 38, 16.131, 73.108

 88, 16.131, 73.108

 28, 16.131, 73.108

 98, 16.131, 73.108

 18, 16.131, 73.108

 8, 16.131, 73.108

 0, 16.131, 73.108

 58, 16.131, 73.108

 58, 16.131, 73.108

 56, 22.277, 71.862

 60, 10.244, 74.349

 53, 28.668, 70.592

 63, 4.608, 75.538

■ 51, 35.248, 69.295

■ 65, 0.793, 257.182

■ 49, 41.882, 67.934

■ 68, 5.980, 258.019

■ 47, 48.284, 66.421

■ 70, 10.974,
259.126

■ 45, 53.925, 64.571

■ 73, 15.798,
260.206

■ 43, 58.419, 62.298

■ 43, 59.133, 62.016

■ 76, 20.470,
261.246

■ 78, 25.007,
262.243

■ 81, 29.424,
263.195

Harmonies

Complementary

The Complementary color scheme is a pair of colors which are on the opposite of each other on the color wheel.



58, 16.131, 73.108



55, 15.024, 260.954

Rectangle

The Rectangle color scheme consists of four colors that form a rectangle on the color wheel.



58, 16.131, 73.108



58, 16.131, 123.108



58, 16.131, 253.108



58, 16.131, 303.108

Sweetspot

The Sweet Spot groups the original color and five complimentary colors.



58, 16.131, 73.116



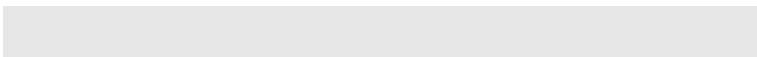
79, 6.013, 75.464



53, 22.017, 346.214



41, 4.181, 75.306



91, 0.011, 296.813



43, 0.006, 296.813

Same Dimension

The Same Dimension uses a secret algorithm to generate beautiful new colors.



58, 16.131, 73.116



72, 24.042, 72.350



64, 24.728, 107.480



32, 3.070, 75.455



39, 54.902, 62.362



2, 3.881, 73.757

Inverse Universe

The Inverse Universe completely reimagines the original color for something new.



55, 15.024, 260.954



68, 22.009, 262.177



49, 26.442, 293.554



32, 3.012, 257.868



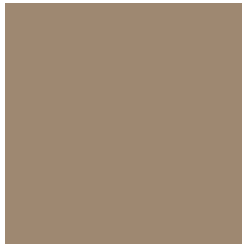
30, 46.978, 284.153



2, 4.036, 259.264

Previews

White Background



This preview shows how the CIELCh color 58, 16.131, 73.108 looks on a white background.

Color Contrast Check

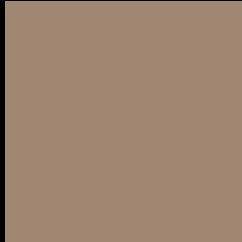
Large Text (above 18pt) WCAG AA ✓ Pass

Any Text WCAG AA × Fail

Large Text (above 18pt) WCAG AAA × Fail

Any Text WCAG AAA × Fail

Black Background



This preview shows how the CIE LCh color 58, 16.131, 73.108 looks on a black background.

Color Contrast Check

Large Text (above 18pt) WCAG AA ✓ Pass

Any Text WCAG AA ✓ Pass

Large Text (above 18pt) WCAG AAA ✓ Pass

Any Text WCAG AAA × Fail

If you want to check with other color combinations, try the [Color Contrast Checker](#).

CIELCh 58, 16.131, 73.108

Background



This preview shows how black text looks on a background with the CIELCh color 58, 16.131, 73.108.



This preview shows how white text looks on a background with the CIELCh color 58, 16.131, 73.108.

Color Blindness Simulation

Color vision deficiency is a very complex topic, and I could not describe the different causes any better than Wikipedia does, so if you want to learn more, you should check out their [article about color blindness](#).

Dichromacy



Original Color

58, 16.131, 73.108

Protanopia

58, 14.629, 93.501

Deuteranopia

58, 17.018, 64.067



Tritanopia
58, 12.822, 354.647

Trichromacy



Original Color
58, 16.131, 73.108

Protanomaly
58, 14.832, 85.059

Deuteranomaly
58, 16.519, 68.463

Tritanomaly
58, 11.096, 26.322

Monochromacy



Original Color
58, 16.131, 73.108

Achromatopsia
58, 0.007, 296.813

Achromatomaly
58, 5.555, 74.070

CSS Examples

Text

The CSS property to change the color of the text to CIELCh 58, 16.131, 73.108 is called "color". The color property can be set on classes, ids or directly on the HTML element.

This example shows how text in the color `rgb(158, 136, 113)` looks like.

```
.text, #text, p{  
    color:rgb(158, 136, 113)  
}
```

If you want to add a text shadow in that color use the text-shadow property, you can generate a text shadow directly with our [CSS Text Shadow Generator](#).

Here you see how black text with a 4 pixel rgb(158, 136, 113) colored shadow looks like.

```
.shadow{ text-shadow: 4px 4px 2px rgb(158, 136, 113) }
```

Border

The CSS property to change the border of an element to CIELCh 58, 16.131, 73.108 is called "border". The border property can be set on classes, ids or directly on the HTML element.

This example shows the color as border, it can be applied via the CSS property "border" or "border-color".

```
.border, #border, table{ border:4px solid rgb(158, 136, 113) }
```

If only the border color should be changed use the property `border-color`.

```
.border{ border-color:rgb(158, 136, 113) }
```

If you want to add a box shadow in that color use:

Here you see how a box with a 4 pixel `rgb(158, 136, 113)` colored shadow looks like.

```
.boxshadow{ -moz-box-shadow:4px 4px 4px  
4px rgb(158, 136, 113); -webkit-box-  
shadow:4px 4px 4px 4px rgb(158, 136, 113);  
box-shadow:4px 4px 4px 4px rgb(158, 136,  
113) }
```

Background

The CSS property to change the background color of an element to CIELCh 58, 16.131, 73.108 is called "background". The background property can be set on classes, ids or directly on the HTML element.

```
.background, #background, body{  
background: rgb(158, 136, 113) }
```

If only the background color should be changed can be used:

```
.background{ background-color: rgb(158,  
136, 113) }
```

This example shows the color as background, it is applied via the CSS property "background".

To optimize and compress your CSS code, you can use our [online CSS compressor and optimizer](#) based on csstidy. If you want to create a linear or radial gradient as background or border, check our [CSS Gradient Generator](#).

Hey! You found this booklet interesting? Support Converting Colors with the new Membership Option!

The pro membership hides all ads, plus gives you double the colors in the color bucket, and more awesome pro features!

[Learn more, Memberships starting at \\$2.50/m!](#)

**Follow me
on Twitter!**

@ConvertingColor