

Converting Colors

CIELCh(58, 16.933, 21.114)

Have a look what the booklet for
CIELCh(58, 16.933, 21.114) contains.

CIELCh(58, 16.944, 21.204)	3
<i>Conversions</i>	4
<i>Details</i>	6
<i>Harmonies</i>	11
<i>Previews</i>	20
<i>Color Blindness Simulation</i>	23
<i>CSS Examples</i>	26

Color

CIELCh(58, 16.944, 21.204)

Conversions

Conversions Part 1

Format	Color
Hex	AA8181
RGB	170, 129, 129
RGB Percent	67%, 51%, 51%
CMY	0.3320, 0.4929, 0.4929
CMYK	0.00, 0.24, 0.24, 0.33
HSL	0°, 20%, 59%
HSV	0°, 24%, 67%
XYZ	28.5258, 25.9610, 24.3863
YIQ	141.2590, 24.4360, 8.6920

Conversions

Conversions Part 2

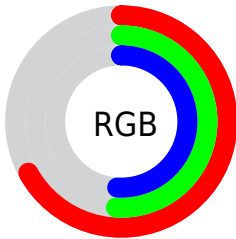
Format	Color
R _Y B	170, 129, 129
Decimal	11174273
CIE Lab	58.00, 15.80, 6.13
CIE LCh	58, 16.944, 21.204
Yxy	25.9610, 0.3617, 0.3291
Android (android.graphics.Color)	4289364353 (0xFFAA8181)
YUV	141.2590, -6.0437, 25.2059
Hunter-Lab	50.9519, 10.7688, 7.2893

Details

The CIELCh color **58, 16.944, 21.204** is a dark color, and the websafe version is hex **CC9999**. A complement of this color would be **67, 14.464, 198.225**, and the grayscale version is **59, 0.008, 296.813**.

A 20% lighter version of the original color is **78, 16.964, 20.788**, and **38, 16.763, 21.922** is the 20% darker color. If you saturate the color by 10%, you get **53, 24.876, 22.376**, and if you desaturate by 10%, it is **63, 9.533, 20.297**.

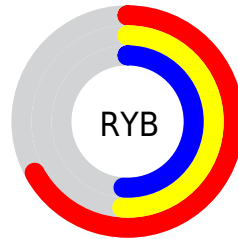
Distribution



Red (67%)

Green (51%)

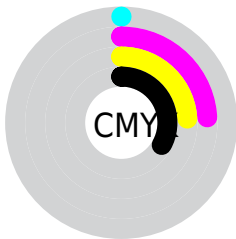
Blue (51%)



Red (67%)

Yellow (51%)

Blue (51%)

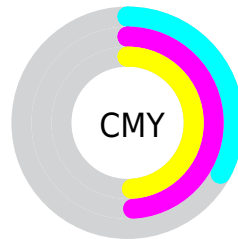


Cyan (0%)

Magenta (24%)

Yellow (24%)

Black (33%)



Cyan (33%)

Magenta (49%)

Yellow (49%)

Brightness & Saturation Gradients

These gradients show how the CIELCh color 58, 16.944, 21.204 changes by changing the brightness by 10 percent. The first figure shows a shift by +10% for each color and the second figure -10%.

Similar to the brightness gradients but the following saturation gradients show a change of the CIELCh color 58, 16.944, 21.204 by changing the saturation by 10% instead.

■ 58, 16.944, 21.204

■ 58, 16.944, 21.204

■ 100, 16.944,
21.204

■ 48, 16.944, 21.204

■ 78, 16.944, 21.204

■ 38, 16.944, 21.204

■ 88, 16.944, 21.204

■ 28, 16.944, 21.204

■ 98, 16.944, 21.204

■ 18, 16.944, 21.204

■ 8, 16.944, 21.204

■ 0, 16.944, 21.204

■ 58, 16.944, 21.204

■ 58, 16.944, 21.204

■ 53, 24.876, 22.376

■ 63, 9.533, 20.297

■ 49, 33.273, 23.889

■ 68, 2.659, 19.474

45, 41.998, 25.856

73, 3.705, 199.249

42, 50.835, 28.375

78, 9.598, 198.739

39, 59.481, 31.480

83, 15.069,
198.378

37, 67.484, 34.988

88, 20.165,
198.092

36, 73.918, 38.210

35, 77.168, 39.894

93, 24.932,
197.861

95, 26.663,
197.774

Harmonies

Complementary

The Complementary color scheme is a pair of colors which are on the opposite of each other on the color wheel.



58, 16.944, 21.204



67, 14.464, 198.225

Rectangle

The Rectangle color scheme consists of four colors that form a rectangle on the color wheel.



58, 16.944, 21.204



58, 16.944, 71.204



58, 16.944, 201.204



58, 16.944, 251.204

Sweetspot

The Sweet Spot groups the original color and five complimentary colors.



58, 16.942, 21.210



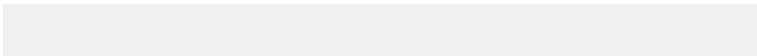
84, 5.718, 19.746



59, 27.748, 325.728



44, 3.754, 19.792



95, 0.011, 296.813



47, 0.006, 296.813

Same Dimension

The Same Dimension uses a secret algorithm to generate beautiful new colors.



58, 16.942, 21.210



71, 25.813, 21.807



63, 14.278, 72.475



33, 3.723, 19.916



30, 69.025, 39.361



1, 6.571, 19.413

Inverse Universe

The Inverse Universe completely reimagines the original color for something new.



67, 14.464, 198.225



84, 21.175, 197.978



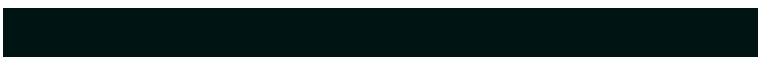
61, 13.396, 258.944



35, 3.515, 199.002



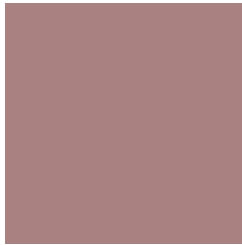
55, 33.382, 196.404



5, 6.571, 199.436

Previews

White Background



This preview shows how the CIELCh color 58, 16.944, 21.204 looks on a white background.

Color Contrast Check

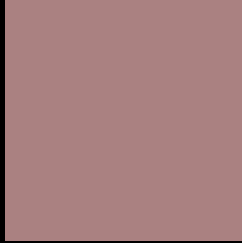
Large Text (above 18pt) WCAG AA ✓ Pass

Any Text WCAG AA ✗ Fail

Large Text (above 18pt) WCAG AAA ✗ Fail

Any Text WCAG AAA ✗ Fail

Black Background



This preview shows how the CIE LCh color 58, 16.944, 21.204 looks on a black background.

Color Contrast Check

Large Text (above 18pt) WCAG AA ✓ Pass

Any Text WCAG AA ✓ Pass

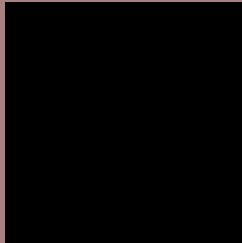
Large Text (above 18pt) WCAG AAA ✓ Pass

Any Text WCAG AAA × Fail

If you want to check with other color combinations, try the [Color Contrast Checker](#).

CIELCh 58, 16.944, 21.204

Background



This preview shows how black text looks on a background with the CIELCh color 58, 16.944, 21.204.



This preview shows how white text looks on a background with the CIELCh color 58, 16.944, 21.204.

Color Blindness Simulation

Color vision deficiency is a very complex topic, and I could not describe the different causes any better than Wikipedia does, so if you want to learn more, you should check out their [article about color blindness](#).

Dichromacy



Original Color

58, 16.944, 21.204

Protanopia

58, 2.753, 74.659

Deuteranopia

58, 9.889, 43.698



Tritanopia
58, 18.187, 3.440

Trichromacy



Original Color
58, 16.944, 21.204

Protanomaly
58, 7.356, 28.907

Deuteranomaly
58, 12.319, 33.748

Tritanomaly
58, 17.882, 8.694

Monochromacy



Original Color
58, 16.944, 21.204

Achromatopsia
59, 0.008, 296.813

Achromatomaly
58, 5.987, 19.945

CSS Examples

Text

The CSS property to change the color of the text to CIELCh 58, 16.944, 21.204 is called "color". The color property can be set on classes, ids or directly on the HTML element.

This example shows how text in the color `rgb(170, 129, 129)` looks like.

```
.text, #text, p{  
    color:rgb(170, 129, 129)  
}
```

If you want to add a text shadow in that color use the text-shadow property, you can generate a text shadow directly with our [CSS Text Shadow Generator](#).

Here you see how black text with a 4 pixel rgb(170, 129, 129) colored shadow looks like.

```
.shadow{ text-shadow: 4px 4px 2px rgb(170, 129, 129) }
```

Border

The CSS property to change the border of an element to CIELCh 58, 16.944, 21.204 is called "border". The border property can be set on classes, ids or directly on the HTML element.

This example shows the color as border, it can be applied via the CSS property "border" or "border-color".

```
.border, #border, table{ border:4px solid rgb(170, 129, 129) }
```

If only the border color should be changed use the property `border-color`.

```
.border{ border-color:rgb(170, 129, 129) }
```

If you want to add a box shadow in that color use:

Here you see how a box with a 4 pixel `rgb(170, 129, 129)` colored shadow looks like.

```
.boxshadow{ -moz-box-shadow:4px 4px 4px  
4px rgb(170, 129, 129); -webkit-box-  
shadow:4px 4px 4px 4px rgb(170, 129, 129);  
box-shadow:4px 4px 4px 4px rgb(170, 129,  
129) }
```

Background

The CSS property to change the background color of an element to CIELCh 58, 16.944, 21.204 is called "background". The background property can be set on classes, ids or directly on the HTML element.

```
.background, #background, body{  
background: rgb(170, 129, 129) }
```

If only the background color should be changed can be used:

```
.background{ background-color: rgb(170,  
129, 129) }
```

This example shows the color as background, it is applied via the CSS property "background".

To optimize and compress your CSS code, you can use our [online CSS compressor and optimizer](#) based on csstidy. If you want to create a linear or radial gradient as background or border, check our [CSS Gradient Generator](#).

Hey! You found this booklet interesting? Support Converting Colors with the new Membership Option!

The pro membership hides all ads, plus gives you double the colors in the color bucket, and more awesome pro features!

[Learn more, Memberships starting at \\$2.50/m!](#)

**Follow me
on Twitter!**

@ConvertingColor