

Converting Colors

CIELCh(58, 17.754, 64.312)

Have a look what the booklet for
CIELCh(58, 17.754, 64.312) contains.

CIELCh(58, 17.760, 64.263)	3
<i>Conversions</i>	4
<i>Details</i>	6
<i>Harmonies</i>	11
<i>Previews</i>	20
<i>Color Blindness Simulation</i>	23
<i>CSS Examples</i>	26

Color

CIELCh(58, 17.760, 64.263)

Conversions

Conversions Part 1

Format	Color
Hex	A38670
RGB	163, 134, 112
RGB Percent	64%, 53%, 44%
CMY	0.3612, 0.4749, 0.5612
CMYK	0.00, 0.18, 0.31, 0.36
HSL	26°, 22%, 54%
HSV	26°, 31%, 64%
XYZ	26.5086, 25.9610, 18.9114
YIQ	140.1630, 24.3460, -0.6940

Conversions

Conversions Part 2

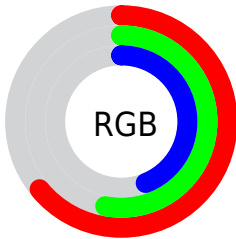
Format	Color
R_{YB}	163, 151, 112
Decimal	10716784
CIE Lab	58.00, 7.71, 16.00
CIE LCh	58, 17.760, 64.263
Yxy	25.9610, 0.3714, 0.3637
Android (android.graphics.Color)	4288906864 (0xFFA38670)
YUV	140.1630, -13.8844, 20.0280
Hunter-Lab	50.9519, 3.7017, 13.6602

Details

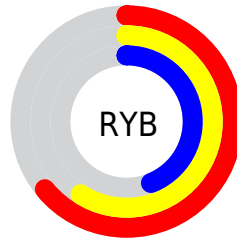
The CIELCh color $58, 17.760, 64.263$ is a dark color, and the websafe version is hex `CC9999`. A complement of this color would be $57, 15.710, 252.187$, and the grayscale version is $58, 0.007, 296.813$.

A 20% lighter version of the original color is $78, 17.770, 63.387$, and $38, 17.671, 63.688$ is the 20% darker color. If you saturate the color by 10%, you get $55, 24.133, 63.229$, and if you desaturate by 10%, it is $61, 11.739, 65.327$.

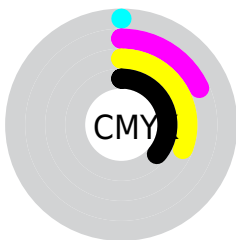
Distribution



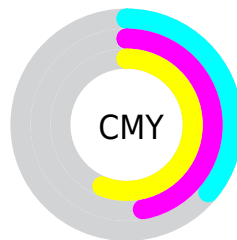
- Red (64%)
- Green (53%)
- Blue (44%)



- Red (64%)
- Yellow (59%)
- Blue (44%)



- Cyan (0%)
- Magenta (18%)
- Yellow (31%)
- Black (36%)



- Cyan (36%)
- Magenta (47%)
- Yellow (56%)

Brightness & Saturation Gradients

These gradients show how the CIELCh color 58, 17.760, 64.263 changes by changing the brightness by 10 percent. The first figure shows a shift by +10% for each color and the second figure -10%.

Similar to the brightness gradients but the following saturation gradients show a change of the CIELCh color 58, 17.760, 64.263 by changing the saturation by 10% instead.

■ 58, 17.760, 64.263

■ 58, 17.760, 64.263

■ 100, 17.760,
64.263

■ 48, 17.760, 64.263

■ 78, 17.760, 64.263

■ 38, 17.760, 64.263

■ 88, 17.760, 64.263

■ 28, 17.760, 64.263

■ 98, 17.760, 64.263

■ 18, 17.760, 64.263

■ 8, 17.760, 64.263

■ 0, 17.760, 64.263

■ 58, 17.760, 64.263

■ 58, 17.760, 64.263

■ 55, 24.133, 63.229

■ 61, 11.739, 65.327

■ 53, 30.850, 62.207

■ 64, 6.053, 66.376

50, 37.860, 61.195

67, 0.675, 66.978

48, 45.015, 60.143

70, 4.424, 248.664

45, 51.990, 58.933

72, 9.275, 249.672

43, 58.145, 57.304

75, 13.906,
250.686

42, 62.773, 55.690

78, 18.344,
251.676

81, 22.613,
252.635

84, 25.417,
250.610

Harmonies

Complementary

The Complementary color scheme is a pair of colors which are on the opposite of each other on the color wheel.



58, 17.760, 64.263



57, 15.710, 252.187

Rectangle

The Rectangle color scheme consists of four colors that form a rectangle on the color wheel.



58, 17.760, 64.263



58, 17.760, 114.263



58, 17.760, 244.263



58, 17.760, 294.263

Sweetspot

The Sweet Spot groups the original color and five complimentary colors.



58, 17.760, 64.271



82, 5.927, 66.592



53, 26.160, 342.009



43, 4.168, 66.451



93, 0.011, 296.813



45, 0.006, 296.813

Same Dimension

The Same Dimension uses a secret algorithm to generate beautiful new colors.



58, 17.760, 64.271



71, 27.269, 63.498



65, 25.714, 103.385



33, 3.016, 66.582



37, 57.589, 56.079



3, 4.521, 62.778

Inverse Universe

The Inverse Universe completely reimagines the original color for something new.



57, 15.710, 252.187



70, 23.329, 253.690



50, 27.345, 290.619



33, 2.923, 248.805



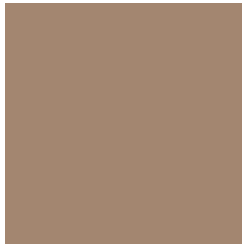
34, 40.642, 275.451



2, 4.742, 253.783

Previews

White Background



This preview shows how the CIELCh color 58, 17.760, 64.263 looks on a white background.

Color Contrast Check

Large Text (above 18pt) WCAG AA ✓ Pass

Any Text WCAG AA × Fail

Large Text (above 18pt) WCAG AAA × Fail

Any Text WCAG AAA × Fail

Black Background



This preview shows how the CIE LCh color 58, 17.760, 64.263 looks on a black background.

Color Contrast Check

Large Text (above 18pt) WCAG AA ✓ Pass

Any Text WCAG AA ✓ Pass

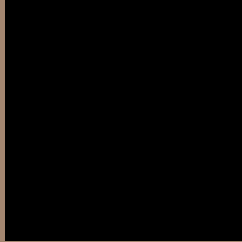
Large Text (above 18pt) WCAG AAA ✓ Pass

Any Text WCAG AAA × Fail

If you want to check with other color combinations, try the [Color Contrast Checker](#).

CIELCh 58, 17.760, 64.263

Background



This preview shows how black text looks on a background with the CIELCh color 58, 17.760, 64.263.



This preview shows how white text looks on a background with the CIELCh color 58, 17.760, 64.263.

Color Blindness Simulation

Color vision deficiency is a very complex topic, and I could not describe the different causes any better than Wikipedia does, so if you want to learn more, you should check out their [article about color blindness](#).

Dichromacy



Original Color

58, 17.760, 64.263

Protanopia

58, 14.629, 93.501

Deuteranopia

58, 17.760, 64.263



Tritanopia
58, 15.450, 359.713

Trichromacy



Original Color
58, 17.760, 64.263

Protanomaly
58, 15.226, 82.094

Deuteranomaly
58, 17.760, 64.263

Tritanomaly
58, 13.993, 23.147

Monochromacy



Original Color
58, 17.760, 64.263

Achromatopsia
58, 0.007, 296.813

Achromatomaly
58, 6.067, 67.785

CSS Examples

Text

The CSS property to change the color of the text to CIELCh 58, 17.760, 64.263 is called "color". The color property can be set on classes, ids or directly on the HTML element.

This example shows how text in the color `rgb(163, 134, 112)` looks like.

```
.text, #text, p{  
    color:rgb(163, 134, 112)  
}
```

If you want to add a text shadow in that color use the text-shadow property, you can generate a text shadow directly with our [CSS Text Shadow Generator](#).

Here you see how black text with a 4 pixel rgb(163, 134, 112) colored shadow looks like.

```
.shadow{ text-shadow: 4px 4px 2px rgb(163, 134, 112) }
```

Border

The CSS property to change the border of an element to CIELCh 58, 17.760, 64.263 is called "border". The border property can be set on classes, ids or directly on the HTML element.

This example shows the color as border, it can be applied via the CSS property "border" or "border-color".

```
.border, #border, table{ border:4px solid rgb(163, 134, 112) }
```

If only the border color should be changed use the property `border-color`.

```
.border{ border-color:rgb(163, 134, 112) }
```

If you want to add a box shadow in that color use:

Here you see how a box with a 4 pixel `rgb(163, 134, 112)` colored shadow looks like.

```
.boxshadow{ -moz-box-shadow:4px 4px 4px  
4px rgb(163, 134, 112); -webkit-box-  
shadow:4px 4px 4px 4px rgb(163, 134, 112);  
box-shadow:4px 4px 4px 4px rgb(163, 134,  
112) }
```

Background

The CSS property to change the background color of an element to CIELCh 58, 17.760, 64.263 is called "background". The background property can be set on classes, ids or directly on the HTML element.

```
.background, #background, body{  
background: rgb(163, 134, 112) }
```

If only the background color should be changed can be used:

```
.background{ background-color: rgb(163,  
134, 112) }
```

This example shows the color as background, it is applied via the CSS property "background".

To optimize and compress your CSS code, you can use our [online CSS compressor and optimizer](#) based on csstidy. If you want to create a linear or radial gradient as background or border, check our [CSS Gradient Generator](#).

Hey! You found this booklet interesting? Support Converting Colors with the new Membership Option!

The pro membership hides all ads, plus gives you double the colors in the color bucket, and more awesome pro features!

[Learn more, Memberships starting at \\$2.50/m!](#)

**Follow me
on Twitter!**

@ConvertingColor