

Converting Colors

CIELCh(58, 18.043, 69.758)

Have a look what the booklet for
CIELCh(58, 18.043, 69.758) contains.

CIELCh(58, 18.173, 70.534)	3
<i>Conversions</i>	4
<i>Details</i>	6
<i>Harmonies</i>	11
<i>Previews</i>	20
<i>Color Blindness Simulation</i>	23
<i>CSS Examples</i>	26

Color

CIELCh(58, 18.173, 70.534)

Conversions

Conversions Part 1

Format	Color
Hex	A1876E
RGB	161, 135, 110
RGB Percent	63%, 53%, 43%
CMY	0.3693, 0.4712, 0.5693
CMYK	0.00, 0.16, 0.32, 0.37
HSL	29°, 21%, 53%
HSV	29°, 32%, 63%
XYZ	26.1075, 25.9610, 18.3396
YIQ	139.9240, 23.5210, -2.2630

Conversions

Conversions Part 2

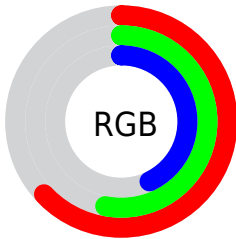
Format	Color
R_{YB}	161, 159, 110
Decimal	10585966
CIE _{Lab}	58.00, 6.06, 17.13
CIE _{LCh}	58, 18.173, 70.534
Yxy	25.9610, 0.3708, 0.3687
Android (android.graphics.Color)	4288776046 (0xFFA1876E)
YUV	139.9240, -14.7525, 18.4837
Hunter-Lab	50.9519, 2.2966, 14.3255

Details

The CIELCh color $58, 18.173, 70.534$ is a dark color, and the websafe version is hex 999966 . A complement of this color would be $56, 16.582, 259.262$, and the grayscale version is $58, 0.007, 296.813$.

A 20% lighter version of the original color is $78, 18.136, 69.368$, and $38, 18.081, 70.405$ is the 20% darker color. If you saturate the color by 10%, you get $56, 24.488, 69.325$, and if you desaturate by 10%, it is $61, 12.144, 71.747$.

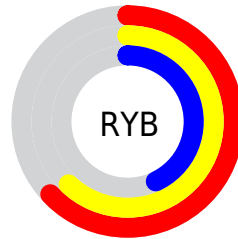
Distribution



Red (63%)

Green (53%)

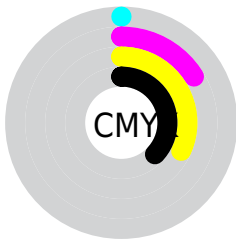
Blue (43%)



Red (63%)

Yellow (62%)

Blue (43%)

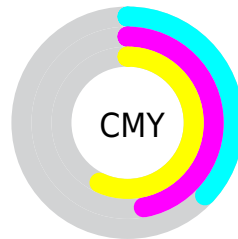


Cyan (0%)

Magenta (16%)

Yellow (32%)

Black (37%)



Cyan (37%)

Magenta (47%)

Yellow (57%)

Brightness & Saturation Gradients

These gradients show how the CIELCh color 58, 18.173, 70.534 changes by changing the brightness by 10 percent. The first figure shows a shift by +10% for each color and the second figure -10%.

Similar to the brightness gradients but the following saturation gradients show a change of the CIELCh color 58, 18.173, 70.534 by changing the saturation by 10% instead.

■ 58, 18.173, 70.534

■ 58, 18.173, 70.534

■ 100, 18.173,
70.534

■ 48, 18.173, 70.534

■ 78, 18.173, 70.534

■ 38, 18.173, 70.534

■ 88, 18.173, 70.534

■ 28, 18.173, 70.534

■ 98, 18.173, 70.534

■ 18, 18.173, 70.534

■ 8, 18.173, 70.534

■ 0, 18.173, 70.534

■ 58, 18.173, 70.534

■ 58, 18.173, 70.534

■ 56, 24.488, 69.325

■ 61, 12.144, 71.747

■ 53, 31.067, 68.099

■ 63, 6.393, 72.927

■ 51, 37.841, 66.847

■ 66, 0.904, 73.809

■ 49, 44.638, 65.519

■ 68, 4.347, 255.395

■ 46, 51.107, 63.995

■ 71, 9.384, 256.483

■ 45, 56.610, 62.039

■ 74, 14.230,
257.563

■ 43, 60.498, 60.231

■ 76, 18.909,
258.608

■ 79, 23.438,
259.613

■ 82, 27.835,
260.576

Harmonies

Complementary

The Complementary color scheme is a pair of colors which are on the opposite of each other on the color wheel.



58, 18.173, 70.534



56, 16.582, 259.262

Rectangle

The Rectangle color scheme consists of four colors that form a rectangle on the color wheel.



58, 18.173, 70.534



58, 18.173, 120.534



58, 18.173, 250.534



58, 18.173, 300.534

Sweetspot

The Sweet Spot groups the original color and five complimentary colors.



58, 18.173, 70.541



81, 6.740, 73.100



52, 25.145, 345.619



42, 4.604, 72.950



92, 0.011, 296.813



44, 0.006, 296.813

Same Dimension

The Same Dimension uses a secret algorithm to generate beautiful new colors.



58, 18.173, 70.541



72, 27.435, 69.689



65, 27.439, 106.461



33, 3.109, 73.203



39, 56.077, 60.581



3, 4.625, 69.130

Inverse Universe

The Inverse Universe completely reimagines the original color for something new.



56, 16.582, 259.262



68, 24.465, 260.748



48, 29.533, 293.415



33, 3.041, 255.593



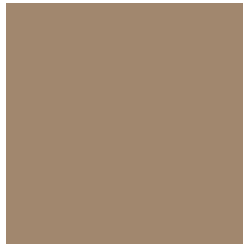
32, 45.731, 282.148



2, 4.937, 259.455

Previews

White Background



This preview shows how the CIELCh color 58, 18.173, 70.534 looks on a white background.

Color Contrast Check

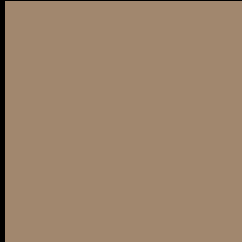
Large Text (above 18pt) WCAG AA ✓ Pass

Any Text WCAG AA × Fail

Large Text (above 18pt) WCAG AAA × Fail

Any Text WCAG AAA × Fail

Black Background



This preview shows how the CIELCh color 58, 18.173, 70.534 looks on a black background.

Color Contrast Check

Large Text (above 18pt) WCAG AA ✓ Pass

Any Text WCAG AA ✓ Pass

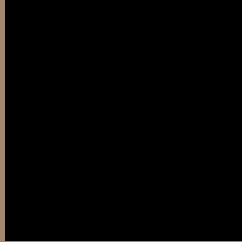
Large Text (above 18pt) WCAG AAA ✓ Pass

Any Text WCAG AAA × Fail

If you want to check with other color combinations, try the [Color Contrast Checker](#).

CIELCh 58, 18.173, 70.534

Background



This preview shows how black text looks on a background with the CIELCh color 58, 18.173, 70.534.



This preview shows how white text looks on a background with the CIELCh color 58, 18.173, 70.534.

Color Blindness Simulation

Color vision deficiency is a very complex topic, and I could not describe the different causes any better than Wikipedia does, so if you want to learn more, you should check out their [article about color blindness](#).

Dichromacy



Original Color

58, 18.173, 70.534

Protanopia

58, 15.723, 94.368

Deuteranopia

58, 18.627, 66.460



Tritanopia
58, 14.305, 357.743

Trichromacy



Original Color
58, 18.173, 70.534

Protanomaly
58, 16.258, 83.638

Deuteranomaly
58, 18.326, 67.444

Tritanomaly
58, 12.787, 25.733

Monochromacy



Original Color
58, 18.173, 70.534

Achromatopsia
58, 0.007, 296.813

Achromatomaly
58, 6.508, 70.990

CSS Examples

Text

The CSS property to change the color of the text to CIELCh 58, 18.173, 70.534 is called "color". The color property can be set on classes, ids or directly on the HTML element.

This example shows how text in the color `rgb(161, 135, 110)` looks like.

```
.text, #text, p{  
    color:rgb(161, 135, 110)  
}
```

If you want to add a text shadow in that color use the text-shadow property, you can generate a text shadow directly with our [CSS Text Shadow Generator](#).

Here you see how black text with a 4 pixel rgb(161, 135, 110) colored shadow looks like.

```
.shadow{ text-shadow: 4px 4px 2px rgb(161, 135, 110) }
```

Border

The CSS property to change the border of an element to CIELCh 58, 18.173, 70.534 is called "border". The border property can be set on classes, ids or directly on the HTML element.

This example shows the color as border, it can be applied via the CSS property "border" or "border-color".

```
.border, #border, table{ border:4px solid rgb(161, 135, 110) }
```

If only the border color should be changed use the property border-color.

```
.border{ border-color:rgb(161, 135, 110) }
```

If you want to add a box shadow in that color use:

Here you see how a box with a 4 pixel rgb(161, 135, 110) colored shadow looks like.

```
.boxshadow{ -moz-box-shadow:4px 4px 4px  
4px rgb(161, 135, 110); -webkit-box-  
shadow:4px 4px 4px 4px rgb(161, 135, 110);  
box-shadow:4px 4px 4px 4px rgb(161, 135,  
110) }
```

Background

The CSS property to change the background color of an element to CIELCh 58, 18.173, 70.534 is called "background". The background property can be set on classes, ids or directly on the HTML element.

```
.background, #background, body{  
background: rgb(161, 135, 110) }
```

If only the background color should be changed can be used:

```
.background{ background-color: rgb(161,  
135, 110) }
```

This example shows the color as background, it is applied via the CSS property "background".

To optimize and compress your CSS code, you can use our [online CSS compressor and optimizer](#) based on csstidy. If you want to create a linear or radial gradient as background or border, check our [CSS Gradient Generator](#).

Hey! You found this booklet interesting? Support Converting Colors with the new Membership Option!

The pro membership hides all ads, plus gives you double the colors in the color bucket, and more awesome pro features!

[Learn more, Memberships starting at \\$2.50/m!](#)

**Follow me
on Twitter!**

@ConvertingColor