

Converting Colors

CIELCh(58, 19.373, 66.528)

Have a look what the booklet for
CIELCh(58, 19.373, 66.528) contains.

| | |
|--|----|
| CIELCh(58, 19.373, 66.528) | 3 |
| <i>Conversions</i> | 4 |
| <i>Details</i> | 6 |
| <i>Harmonies</i> | 11 |
| <i>Previews</i> | 20 |
| <i>Color Blindness Simulation</i> | 23 |
| <i>CSS Examples</i> | 26 |

Color

CIELCh(58, 19.373, 66.528)

Conversions

Conversions Part 1

| Format | Color |
|---------------|----------------------------|
| Hex | A4866D |
| RGB | 164, 134, 109 |
| RGB Percent | 64%, 53%, 43% |
| CMY | 0.3577, 0.4753, 0.5733 |
| CMYK | 0.00, 0.18, 0.34, 0.36 |
| HSL | 27°, 23%, 53% |
| HSV | 27°, 34%, 64% |
| XYZ | 26.5096, 25.9610, 18.0248 |
| YIQ | 140.1200, 25.9050, -1.4150 |

Conversions

Conversions Part 2

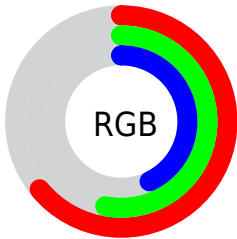
| Format | Color |
|--|---|
| RYB | 164, 155, 109 |
| Decimal | 10782317 |
| CIELab | 58.00, 7.72, 17.77 |
| CIELCh | 58, 19.373, 66.528 |
| Yxy | 25.9610, 0.3760, 0.3683 |
| Android (android.graphics.Color) | 4288972397 (0xFFA4866D) |
| YUV | 140.1200, -15.3422, 20.9428 |
| Hunter-Lab | 50.9519, 3.7053, 14.6919 |

Details

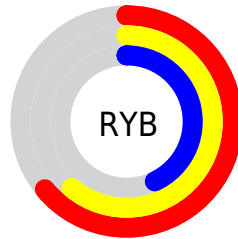
The CIELCh color $58, 19.373, 66.528$ is a dark color, and the websafe version is hex `CC9999`. A complement of this color would be $56, 17.199, 255.478$, and the grayscale version is $58, 0.007, 296.813$.

A 20% lighter version of the original color is $78, 19.259, 65.702$, and $38, 19.442, 65.990$ is the 20% darker color. If you saturate the color by 10%, you get $55, 25.840, 65.416$, and if you desaturate by 10%, it is $61, 13.235, 67.660$.

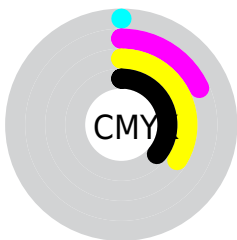
Distribution



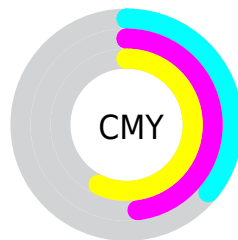
- Red (64%)
- Green (53%)
- Blue (43%)



- Red (64%)
- Yellow (61%)
- Blue (43%)



- Cyan (0%)
- Magenta (18%)
- Yellow (34%)
- Black (36%)



- Cyan (36%)
- Magenta (48%)
- Yellow (57%)


Brightness & Saturation Gradients

These gradients show how the CIELCh color 58, 19.373, 66.528 changes by changing the brightness by 10 percent. The first figure shows a shift by +10% for each color and the second figure -10%.

Similar to the brightness gradients but the following saturation gradients show a change of the CIELCh color 58, 19.373, 66.528 by changing the saturation by 10% instead.

 58, 19.373, 66.528

 58, 19.373, 66.528

 100, 19.373,
66.528

 48, 19.373, 66.528

 78, 19.373, 66.528

 38, 19.373, 66.528

 88, 19.373, 66.528

 28, 19.373, 66.528

 98, 19.373, 66.528

 18, 19.373, 66.528

 8, 19.373, 66.528

 0, 19.373, 66.528

 58, 19.373, 66.528

 58, 19.373, 66.528

 55, 25.840, 65.416

 61, 13.235, 67.660

 53, 32.617, 64.304

 63, 7.417, 68.775

50, 39.627, 63.179

66, 1.897, 69.769

48, 46.685, 61.980

69, 3.352, 251.172

46, 53.393, 60.564

72, 8.358, 252.204

44, 59.033, 58.643

75, 13.149,
253.254

43, 62.320, 57.381

78, 17.749,
254.278

81, 22.183,
255.269

84, 25.988,
255.279

Harmonies

Complementary

The Complementary color scheme is a pair of colors which are on the opposite of each other on the color wheel.



58, 19.373, 66.528



56, 17.199, 255.478

Rectangle

The Rectangle color scheme consists of four colors that form a rectangle on the color wheel.



58, 19.373, 66.528



58, 19.373, 116.528



58, 19.373, 246.528



58, 19.373, 296.528

Sweetspot

The Sweet Spot groups the original color and five complimentary colors.



58, 19.373, 66.535



81, 6.674, 69.143



53, 27.586, 343.990



43, 4.606, 68.999



93, 0.011, 296.813



45, 0.006, 296.813

Same Dimension

The Same Dimension uses a secret algorithm to generate beautiful new colors.



58, 19.373, 66.535



71, 29.005, 65.733



65, 28.548, 104.766



33, 3.048, 69.240



38, 56.952, 57.792



3, 4.555, 65.315

Inverse Universe

The Inverse Universe completely reimagines the original color for something new.



56, 17.199, 255.478



69, 25.014, 257.023



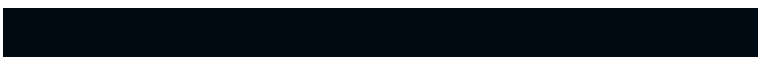
49, 30.717, 292.404



33, 2.965, 251.542



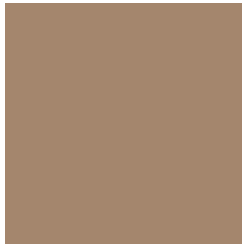
33, 42.581, 278.249



2, 4.813, 256.073

Previews

White Background



This preview shows how the CIELCh color 58, 19.373, 66.528 looks on a white background.

Color Contrast Check

Large Text (above 18pt) WCAG AA ✓ Pass

Any Text WCAG AA × Fail

Large Text (above 18pt) WCAG AAA × Fail

Any Text WCAG AAA × Fail

Black Background



This preview shows how the CIELCh color 58, 19.373, 66.528 looks on a black background.

Color Contrast Check

Large Text (above 18pt) WCAG AA ✓ Pass

Any Text WCAG AA ✓ Pass

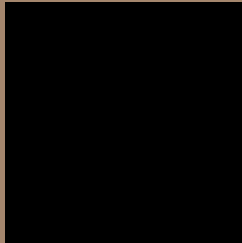
Large Text (above 18pt) WCAG AAA ✓ Pass

Any Text WCAG AAA × Fail

If you want to check with other color combinations, try the [Color Contrast Checker](#).

CIELCh 58, 19.373, 66.528

Background



This preview shows how black text looks on a background with the CIELCh color 58, 19.373, 66.528.



This preview shows how white text looks on a background with the CIELCh color 58, 19.373, 66.528.

Color Blindness Simulation

Color vision deficiency is a very complex topic, and I could not describe the different causes any better than Wikipedia does, so if you want to learn more, you should check out their [article about color blindness](#).

Dichromacy



Original Color


58, 19.373, 66.528

Protanopia

58, 16.270, 94.750

Deuteranopia

58, 19.071, 67.477



Tritanopia
58, 15.829, 0.308

Trichromacy



Original Color
58, 19.373, 66.528

Protanomaly
58, 16.966, 83.006

Deuteranomaly
58, 19.071, 67.477

Tritanomaly
58, 14.494, 25.326

Monochromacy



Original Color
58, 19.373, 66.528

Achromatopsia
58, 0.007, 296.813

Achromatomaly
58, 6.773, 68.279

CSS Examples

Text

The CSS property to change the color of the text to CIELCh 58, 19.373, 66.528 is called "color". The color property can be set on classes, ids or directly on the HTML element.

This example shows how text in the color `rgb(164, 134, 109)` looks like.

```
.text, #text, p{  
    color:rgb(164, 134, 109)  
}
```

If you want to add a text shadow in that color use the text-shadow property, you can generate a text shadow directly with our [CSS Text Shadow Generator](#).

Here you see how black text with a 4 pixel rgb(164, 134, 109) colored shadow looks like.

```
.shadow{ text-shadow: 4px 4px 2px rgb(164, 134, 109) }
```

Border

The CSS property to change the border of an element to CIELCh 58, 19.373, 66.528 is called "border". The border property can be set on classes, ids or directly on the HTML element.

This example shows the color as border, it can be applied via the CSS property "border" or "border-color".

```
.border, #border, table{ border:4px solid rgb(164, 134, 109) }
```

If only the border color should be changed use the property `border-color`.

```
.border{ border-color:rgb(164, 134, 109) }
```

If you want to add a box shadow in that color use:

Here you see how a box with a 4 pixel `rgb(164, 134, 109)` colored shadow looks like.

```
.boxshadow{ -moz-box-shadow:4px 4px 4px  
4px rgb(164, 134, 109); -webkit-box-  
shadow:4px 4px 4px 4px rgb(164, 134, 109);  
box-shadow:4px 4px 4px 4px rgb(164, 134,  
109) }
```

Background

The CSS property to change the background color of an element to CIELCh 58, 19.373, 66.528 is called "background". The background property can be set on classes, ids or directly on the HTML element.

```
.background, #background, body{  
background: rgb(164, 134, 109) }
```

If only the background color should be changed can be used:

```
.background{ background-color: rgb(164,  
134, 109) }
```

This example shows the color as background, it is applied via the CSS property "background".

To optimize and compress your CSS code, you can use our [online CSS compressor and optimizer](#) based on csstidy. If you want to create a linear or radial gradient as background or border, check our [CSS Gradient Generator](#).

Hey! You found this booklet interesting? Support Converting Colors with the new Membership Option!

The pro membership hides all ads, plus gives you double the colors in the color bucket, and more awesome pro features!

[Learn more, Memberships starting at \\$2.50/m!](#)

**Follow me
on Twitter!**

@ConvertingColor