

Converting Colors

CIELCh(58, 20.720, 17.893)

Have a look what the booklet for
CIELCh(58, 20.720, 17.893) contains.

CIELCh(58, 20.734, 18.589)	3
<i>Conversions</i>	4
<i>Details</i>	6
<i>Harmonies</i>	11
<i>Previews</i>	20
<i>Color Blindness Simulation</i>	23
<i>CSS Examples</i>	26

Color

CIELCh(58, 20.734, 18.589)

Conversions

Conversions Part 1

Format	Color
Hex	B17F81
RGB	177, 127, 129
RGB Percent	69%, 50%, 51%
CMY	0.3074, 0.5034, 0.4955
CMYK	0.00, 0.28, 0.27, 0.31
HSL	358°, 24%, 59%
HSV	358°, 28%, 69%
XYZ	29.5228, 25.9610, 24.0977
YIQ	142.1780, 29.1580, 11.2220

Conversions

Conversions Part 2

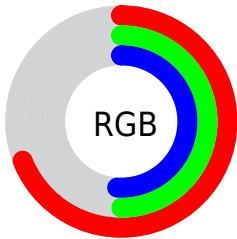
Format	Color
RYB	177, 127, 129
Decimal	11632513
CIELab	58.00, 19.65, 6.61
CIELCh	58, 20.734, 18.589
Yxy	25.9610, 0.3710, 0.3262
Android (android.graphics.Color)	4289822593 (0xFFB17F81)
YUV	142.1780, -6.4968, 30.5389
Hunter-Lab	50.9519, 14.2615, 7.6252

Details

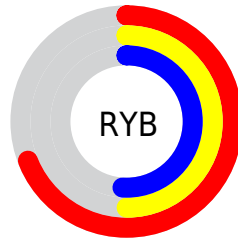
The CIELCh color **58, 20.734, 18.589** is a dark color, and the websafe version is hex **996666**. A complement of this color would be **69, 17.401, 194.347**, and the grayscale version is **59, 0.008, 296.813**.

A 20% lighter version of the original color is **78, 20.909, 18.267**, and **38, 20.861, 17.759** is the 20% darker color. If you saturate the color by 10%, you get **53, 28.986, 19.987**, and if you desaturate by 10%, it is **63, 12.942, 17.493**.

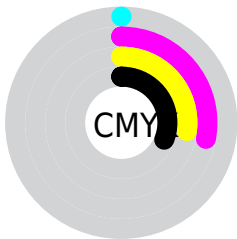
Distribution



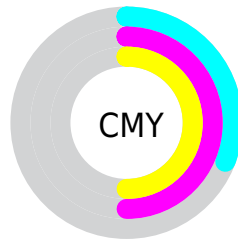
- Red (69%)
- Green (50%)
- Blue (51%)



- Red (69%)
- Yellow (50%)
- Blue (51%)



- Cyan (0%)
- Magenta (28%)
- Yellow (27%)
- Black (31%)



- Cyan (31%)
- Magenta (50%)
- Yellow (50%)

Brightness & Saturation Gradients

These gradients show how the CIELCh color 58, 20.734, 18.589 changes by changing the brightness by 10 percent. The first figure shows a shift by +10% for each color and the second figure -10%.

Similar to the brightness gradients but the following saturation gradients show a change of the CIELCh color 58, 20.734, 18.589 by changing the saturation by 10% instead.

■ 58, 20.734, 18.589

■ 58, 20.734, 18.589

■ 100, 20.734,
18.589

■ 48, 20.734, 18.589

■ 78, 20.734, 18.589

■ 38, 20.734, 18.589

■ 88, 20.734, 18.589

■ 28, 20.734, 18.589

■ 98, 20.734, 18.589

■ 18, 20.734, 18.589

■ 8, 20.734, 18.589

■ 0, 20.734, 18.589

■ 58, 20.734, 18.589

■ 58, 20.734, 18.589

■ 53, 28.986, 19.987

■ 63, 12.942, 17.493

■ 49, 37.596, 21.772

■ 68, 5.658, 16.581

45, 46.377, 24.064

73, 1.120, 196.421

42, 55.072, 26.967

78, 7.421, 195.478

39, 63.366, 30.499

83, 13.285,
194.980

38, 70.841, 34.422

88, 18.755,
194.578

37, 76.736, 37.876

94, 23.878,
194.240

37, 77.613, 38.317

95, 24.940,
197.880

Harmonies

Complementary

The Complementary color scheme is a pair of colors which are on the opposite of each other on the color wheel.



58, 20.734, 18.589



69, 17.401, 194.347

Rectangle

The Rectangle color scheme consists of four colors that form a rectangle on the color wheel.



58, 20.734, 18.589



58, 20.734, 68.589



58, 20.734, 198.589



58, 20.734, 248.589

Sweetspot

The Sweet Spot groups the original color and five complimentary colors.



58, 20.732, 18.594



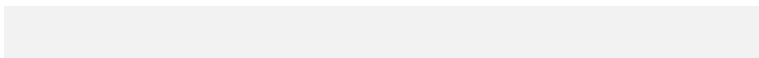
86, 6.750, 16.567



59, 33.099, 324.523



45, 4.818, 16.697



96, 0.011, 296.813



48, 0.006, 296.813

Same Dimension

The Same Dimension uses a secret algorithm to generate beautiful new colors.



58, 20.732, 18.594



70, 31.477, 19.430



64, 17.096, 66.604



35, 3.912, 16.672



31, 69.450, 37.908



2, 9.170, 16.834

Inverse Universe

The Inverse Universe completely reimagines the original color for something new.



58, 20.732, 18.594



70, 31.477, 19.430



62, 15.452, 253.934



35, 3.912, 16.672



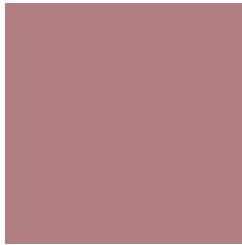
31, 69.450, 37.908



2, 9.170, 16.834

Previews

White Background



This preview shows how the CIELCh color 58, 20.734, 18.589 looks on a white background.

Color Contrast Check

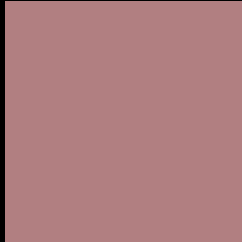
Large Text (above 18pt) WCAG AA ✓ Pass

Any Text WCAG AA ✗ Fail

Large Text (above 18pt) WCAG AAA ✗ Fail

Any Text WCAG AAA ✗ Fail

Black Background



This preview shows how the CIELCh color 58, 20.734, 18.589 looks on a black background.

Color Contrast Check

Large Text (above 18pt) WCAG AA ✓ Pass

Any Text WCAG AA ✓ Pass

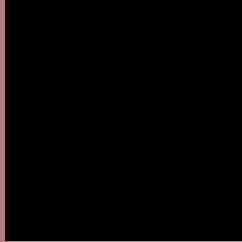
Large Text (above 18pt) WCAG AAA ✓ Pass

Any Text WCAG AAA × Fail

If you want to check with other color combinations, try the [Color Contrast Checker](#).

CIELCh 58, 20.734, 18.589

Background



This preview shows how black text looks on a background with the CIELCh color 58, 20.734, 18.589.



This preview shows how white text looks on a background with the CIELCh color 58, 20.734, 18.589.

Color Blindness Simulation

Color vision deficiency is a very complex topic, and I could not describe the different causes any better than Wikipedia does, so if you want to learn more, you should check out their [article about color blindness](#).

Dichromacy



Original Color

58, 20.734, 18.589

Protanopia

58, 2.753, 74.659

Deuteranopia

58, 10.536, 45.537



Tritanopia
58, 21.318, 8.152

Trichromacy



Original Color
58, 20.734, 18.589

Protanomaly
58, 8.173, 28.100

Deuteranomaly
58, 13.854, 30.090

Tritanomaly
58, 21.202, 11.152

Monochromacy



Original Color
58, 20.734, 18.589

Achromatopsia
59, 0.008, 296.813

Achromatomaly
58, 7.629, 15.904

CSS Examples

Text

The CSS property to change the color of the text to CIELCh 58, 20.734, 18.589 is called "color". The color property can be set on classes, ids or directly on the HTML element.

This example shows how text in the color `rgb(177, 127, 129)` looks like.

```
.text, #text, p{  
    color:rgb(177, 127, 129)  
}
```

If you want to add a text shadow in that color use the text-shadow property, you can generate a text shadow directly with our [CSS Text Shadow Generator](#).

Here you see how black text with a 4 pixel rgb(177, 127, 129) colored shadow looks like.

```
.shadow{ text-shadow: 4px 4px 2px rgb(177, 127, 129) }
```

Border

The CSS property to change the border of an element to CIELCh 58, 20.734, 18.589 is called "border". The border property can be set on classes, ids or directly on the HTML element.

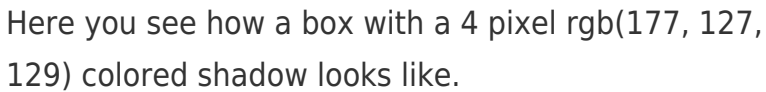
This example shows the color as border, it can be applied via the CSS property "border" or "border-color".

```
.border, #border, table{ border:4px solid rgb(177, 127, 129) }
```

If only the border color should be changed use the property `border-color`.

```
.border{ border-color:rgb(177, 127, 129) }
```

If you want to add a box shadow in that color use:



Here you see how a box with a 4 pixel `rgb(177, 127, 129)` colored shadow looks like.

```
.boxshadow{ -moz-box-shadow:4px 4px 4px 4px rgb(177, 127, 129); -webkit-box-shadow:4px 4px 4px 4px rgb(177, 127, 129); box-shadow:4px 4px 4px 4px rgb(177, 127, 129) }
```

Background

The CSS property to change the background color of an element to CIELCh 58, 20.734, 18.589 is called "background". The background property can be set on classes, ids or directly on the HTML element.

```
.background, #background, body{  
background: rgb(177, 127, 129) }
```

If only the background color should be changed can be used:

```
.background{ background-color: rgb(177,  
127, 129) }
```

This example shows the color as background, it is applied via the CSS property "background".

To optimize and compress your CSS code, you can use our [online CSS compressor and optimizer](#) based on csstidy. If you want to create a linear or radial gradient as background or border, check our [CSS Gradient Generator](#).

Hey! You found this booklet interesting? Support Converting Colors with the new Membership Option!

The pro membership hides all ads, plus gives you double the colors in the color bucket, and more awesome pro features!

[Learn more, Memberships starting at \\$2.50/m!](#)

**Follow me
on Twitter!**

@ConvertingColor