

# Converting Colors

CIELCh(58, 23.873, 31.245)

Have a look what the booklet for  
CIELCh(58, 23.873, 31.245) contains.

<b>CIELCh(58, 23.873, 31.245)</b> .....	3
<i><b>Conversions</b></i> .....	4
<i><b>Details</b></i> .....	6
<i><b>Harmonies</b></i> .....	11
<i><b>Previews</b></i> .....	20
<i><b>Color Blindness Simulation</b></i> .....	23
<i><b>CSS Examples</b></i> .....	26

**Color**

**CIELCh(58, 23.873, 31.245)**

# Conversions

## Conversions Part 1

<b>Format</b>	<b>Color</b>
Hex	B57E77
RGB	181, 126, 119
RGB Percent	71%, 49%, 47%
CMY	0.2914, 0.5070, 0.5344
CMYK	0.00, 0.30, 0.34, 0.29
HSL	7°, 29%, 59%
HSV	7°, 34%, 71%
XYZ	29.7215, 25.9610, 20.8097
YIQ	141.6470, 35.0270, 9.4830

# Conversions

## Conversions Part 2

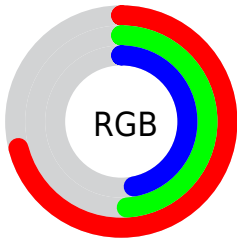
<b>Format</b>	<b>Color</b>
<b>R<sub>YB</sub></b>	181, 127, 119
Decimal	11894391
CIE <sub>Lab</sub>	58.00, 20.41, 12.38
CIE <sub>LCh</sub>	58, 23.873, 31.245
Yxy	25.9610, 0.3886, 0.3394
Android (android.graphics.Color)	4290084471 (0xFFB57E77)
YUV	141.6470, -11.1650, 34.5126
Hunter-Lab	50.9519, 14.9577, 11.4513

# Details

The CIELCh color **58, 23.873, 31.245** is a dark color, and the websafe version is hex **996666**. A complement of this color would be **68, 18.668, 209.998**, and the grayscale version is **59, 0.008, 296.813**.

A 20% lighter version of the original color is **78, 23.833, 31.459**, and **38, 23.763, 30.164** is the 20% darker color. If you saturate the color by 10%, you get **54, 32.070, 32.112**, and if you desaturate by 10%, it is **62, 16.235, 30.636**.

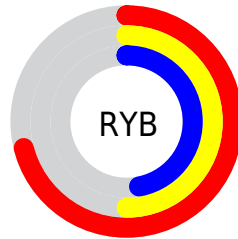
# Distribution



Red (71%)

Green (49%)

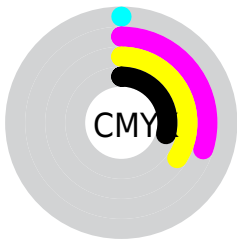
Blue (47%)



Red (71%)

Yellow (50%)

Blue (47%)

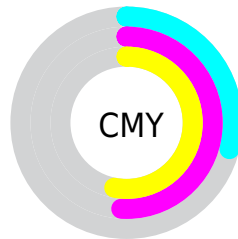


Cyan (0%)

Magenta (30%)

Yellow (34%)

Black (29%)



Cyan (29%)

Magenta (51%)

Yellow (53%)

# Brightness & Saturation Gradients

These gradients show how the CIELCh color 58, 23.873, 31.245 changes by changing the brightness by 10 percent. The first figure shows a shift by +10% for each color and the second figure -10%.

Similar to the brightness gradients but the following saturation gradients show a change of the CIELCh color 58, 23.873, 31.245 by changing the saturation by 10% instead.



■ 58, 23.873, 31.245

■ 58, 23.873, 31.245

■ 100, 23.873,  
31.245

■ 48, 23.873, 31.245

■ 78, 23.873, 31.245

■ 38, 23.873, 31.245

■ 88, 23.873, 31.245

■ 28, 23.873, 31.245

■ 98, 23.873, 31.245

■ 18, 23.873, 31.245

■ 8, 23.873, 31.245

■ 0, 23.873, 31.245

■ 58, 23.873, 31.245

■ 58, 23.873, 31.245

■ 54, 32.070, 32.112

■ 62, 16.235, 30.636

■ 50, 40.775, 33.282

■ 67, 9.167, 30.203

46, 49.857, 34.809

72, 2.644, 29.806

43, 59.069, 36.686

76, 3.375, 210.008

41, 67.924, 38.738

81, 8.940, 209.853

39, 75.360, 40.413

86, 14.100,  
209.834

38, 78.949, 41.424

91, 18.902,  
209.874

95, 23.441,  
199.302

95, 23.791,  
197.951

# Harmonies

# Complementary

The Complementary color scheme is a pair of colors which are on the opposite of each other on the color wheel.



58, 23.873, 31.245



68, 18.668, 209.998

# Rectangle

The Rectangle color scheme consists of four colors that form a rectangle on the color wheel.



58, 23.873, 31.245



58, 23.873, 81.245



58, 23.873, 211.245



58, 23.873, 261.245

# Sweetspot

The Sweet Spot groups the original color and five complimentary colors.



58, 23.871, 31.250



87, 7.795, 30.056



58, 38.603, 329.248



45, 5.344, 30.105



96, 0.011, 296.813



49, 0.007, 296.813



# Same Dimension

The Same Dimension uses a secret algorithm to generate beautiful new colors.



58, 23.871, 31.250



70, 36.334, 31.860



66, 23.164, 80.955



35, 3.523, 30.026



32, 69.293, 41.348



2, 8.422, 27.329





# Inverse Universe

The Inverse Universe completely reimagines the original color for something new.



68, 18.668, 209.998



84, 26.690, 210.212



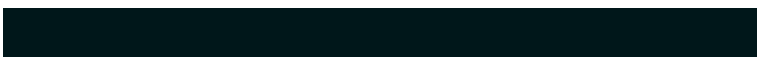
59, 22.285, 270.991



37, 3.320, 209.906



52, 30.243, 216.490



6, 7.900, 215.415



# Previews

## White Background



This preview shows how the CIELCh color 58, 23.873, 31.245 looks on a white background.

## Color Contrast Check

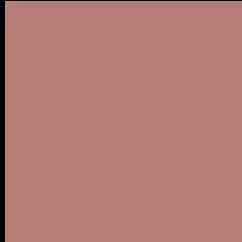
Large Text (above 18pt) WCAG AA ✓ Pass

Any Text WCAG AA ✗ Fail

Large Text (above 18pt) WCAG AAA ✗ Fail

Any Text WCAG AAA ✗ Fail

# Black Background



This preview shows how the CIE LCh color 58, 23.873, 31.245 looks on a black background.

## Color Contrast Check

Large Text (above 18pt) WCAG AA ✓ Pass

Any Text WCAG AA ✓ Pass

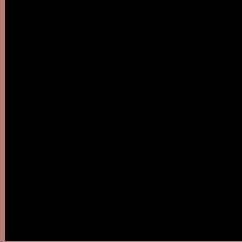
Large Text (above 18pt) WCAG AAA ✓ Pass

Any Text WCAG AAA × Fail

If you want to check with other color combinations, try the [Color Contrast Checker](#).

# CIELCh 58, 23.873, 31.245

## Background



This preview shows how black text looks on a background with the CIELCh color 58, 23.873, 31.245.



This preview shows how white text looks on a background with the CIELCh color 58, 23.873, 31.245.

# Color Blindness Simulation

Color vision deficiency is a very complex topic, and I could not describe the different causes any better than Wikipedia does, so if you want to learn more, you should check out their [article about color blindness](#).

## Dichromacy



### Original Color

58, 23.873, 31.245

### Protanopia

58, 7.884, 88.070

### Deuteranopia

58, 15.056, 59.649



**Tritanopia**  
58, 24.221, 10.223



# Trichromacy



**Original Color**  
58, 23.873, 31.245

**Protanomaly**  
58, 12.195, 50.794

**Deuteranomaly**  
58, 17.488, 45.460

**Tritanomaly**  
58, 23.735, 18.022

# Monochromacy



**Original Color**  
58, 23.873, 31.245

**Achromatopsia**  
59, 0.008, 296.813

**Achromatomaly**  
58, 8.173, 28.100

# CSS Examples

## Text

The CSS property to change the color of the text to CIELCh 58, 23.873, 31.245 is called "color". The color property can be set on classes, ids or directly on the HTML element.

This example shows how text in the color `rgb(181, 126, 119)` looks like.

```
.text, #text, p{  
    color:rgb(181, 126, 119)  
}
```

If you want to add a text shadow in that color use the text-shadow property, you can generate a text shadow directly with our [CSS Text Shadow Generator](#).

Here you see how black text with a 4 pixel rgb(181, 126, 119) colored shadow looks like.

```
.shadow{ text-shadow: 4px 4px 2px rgb(181, 126, 119) }
```

## Border

The CSS property to change the border of an element to CIELCh 58, 23.873, 31.245 is called "border". The border property can be set on classes, ids or directly on the HTML element.

This example shows the color as border, it can be applied via the CSS property "border" or "border-color".

```
.border, #border, table{ border:4px solid rgb(181, 126, 119) }
```

If only the border color should be changed use the property `border-color`.

```
.border{ border-color:rgb(181, 126, 119) }
```

If you want to add a box shadow in that color use:

Here you see how a box with a 4 pixel `rgb(181, 126, 119)` colored shadow looks like.

```
.boxshadow{ -moz-box-shadow:4px 4px 4px  
4px rgb(181, 126, 119); -webkit-box-  
shadow:4px 4px 4px 4px rgb(181, 126, 119);  
box-shadow:4px 4px 4px 4px rgb(181, 126,  
119) }
```

# Background

The CSS property to change the background color of an element to CIELCh 58, 23.873, 31.245 is called "background". The background property can be set on classes, ids or directly on the HTML element.

```
.background, #background, body{  
background: rgb(181, 126, 119) }
```

If only the background color should be changed can be used:

```
.background{ background-color: rgb(181,  
126, 119) }
```

This example shows the color as background, it is applied via the CSS property "background".

To optimize and compress your CSS code, you can use our [online CSS compressor and optimizer](#) based on csstidy. If you want to create a linear or radial gradient as background or border, check our [CSS Gradient Generator](#).

Hey! You found this booklet interesting? Support Converting Colors with the new Membership Option!

The pro membership hides all ads, plus gives you double the colors in the color bucket, and more awesome pro features!

**[Learn more, Memberships starting at \\$2.50/m!](#)**

**Follow me  
on Twitter!**

@ConvertingColor