

Converting Colors

CIELCh(58, 25.857, 24.720)

Have a look what the booklet for
CIELCh(58, 25.857, 24.720) contains.

CIELCh(58, 25.853, 24.694)	3
<i>Conversions</i>	4
<i>Details</i>	6
<i>Harmonies</i>	11
<i>Previews</i>	20
<i>Color Blindness Simulation</i>	23
<i>CSS Examples</i>	26

Color

CIELCh(58, 25.853, 24.694)

Conversions

Conversions Part 1

Format	Color
Hex	B97C7A
RGB	185, 124, 122
RGB Percent	73%, 49%, 48%
CMY	0.2763, 0.5154, 0.5232
CMYK	0.00, 0.33, 0.34, 0.28
HSL	2°, 31%, 60%
HSV	2°, 34%, 72%
XYZ	30.5377, 25.9610, 21.6789
YIQ	142.0110, 36.9980, 12.3100

Conversions

Conversions Part 2

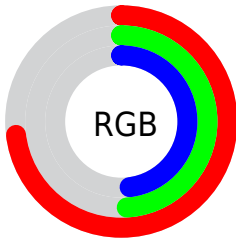
Format	Color
RYB	185, 124, 122
Decimal	12156026
CIELab	58.00, 23.49, 10.80
CIELCh	58, 25.853, 24.694
Yxy	25.9610, 0.3906, 0.3321
Android (android.graphics.Color)	4290346106 (0xFFB97C7A)
YUV	142.0110, -9.8654, 37.7014
Hunter-Lab	50.9519, 17.8169, 10.4398

Details

The CIELCh color **58, 25.853, 24.694** is a dark color, and the websafe version is hex **996666**. A complement of this color would be **70, 20.360, 200.921**, and the grayscale version is **59, 0.008, 296.813**.

A 20% lighter version of the original color is **78, 25.699, 25.065**, and **38, 26.041, 24.843** is the 20% darker color. If you saturate the color by 10%, you get **53, 34.642, 26.053**, and if you desaturate by 10%, it is **63, 17.586, 23.667**.

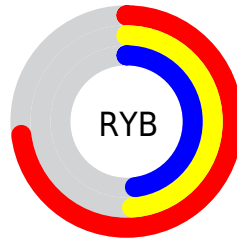
Distribution



Red (73%)

Green (49%)

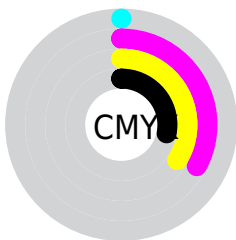
Blue (48%)



Red (73%)

Yellow (49%)

Blue (48%)

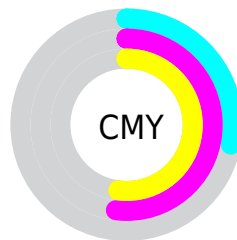


Cyan (0%)

Magenta (33%)

Yellow (34%)

Black (28%)



Cyan (28%)

Magenta (52%)

Yellow (52%)

Brightness & Saturation Gradients

These gradients show how the CIELCh color 58, 25.853, 24.694 changes by changing the brightness by 10 percent. The first figure shows a shift by +10% for each color and the second figure -10%.

Similar to the brightness gradients but the following saturation gradients show a change of the CIELCh color 58, 25.853, 24.694 by changing the saturation by 10% instead.

■ 58, 25.853, 24.694

■ 58, 25.853, 24.694

■ 100, 25.853,
24.694

■ 48, 25.853, 24.694

■ 78, 25.853, 24.694

■ 38, 25.853, 24.694

■ 88, 25.853, 24.694

■ 28, 25.853, 24.694

■ 98, 25.853, 24.694

■ 18, 25.853, 24.694

■ 8, 25.853, 24.694

■ 0, 25.853, 24.694

■ 58, 25.853, 24.694

■ 58, 25.853, 24.694

■ 53, 34.642, 26.053

■ 63, 17.586, 23.667

■ 49, 43.842, 27.824

■ 68, 9.893, 22.871

46, 53.250, 30.094

73, 2.771, 22.150

43, 62.557, 32.884

78, 3.811, 202.031

40, 71.256, 36.002

83, 9.900, 201.609

39, 78.278, 38.777

89, 15.546,
201.332

39, 81.574, 40.333

94, 20.802,
201.127

96, 22.692,
198.019

Harmonies

Complementary

The Complementary color scheme is a pair of colors which are on the opposite of each other on the color wheel.



58, 25.853, 24.694



70, 20.360, 200.921

Rectangle

The Rectangle color scheme consists of four colors that form a rectangle on the color wheel.



58, 25.853, 24.694



58, 25.853, 74.694



58, 25.853, 204.694



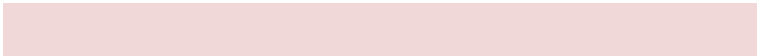
58, 25.853, 254.694

Sweetspot

The Sweet Spot groups the original color and five complimentary colors.



58, 25.851, 24.699



88, 8.534, 22.598



59, 41.326, 326.727



46, 5.851, 22.693



97, 0.011, 296.813



50, 0.007, 296.813

Same Dimension

The Same Dimension uses a secret algorithm to generate beautiful new colors.



58, 25.851, 24.699



70, 39.490, 25.689



66, 22.285, 72.919



36, 3.880, 22.542



32, 71.436, 40.057



2, 10.393, 21.383

Inverse Universe

The Inverse Universe completely reimagines the original color for something new.



70, 20.360, 200.921



88, 29.251, 200.752



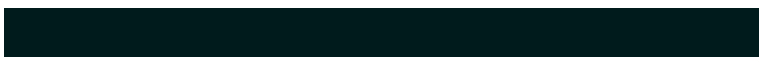
62, 20.474, 262.741



38, 3.658, 201.816



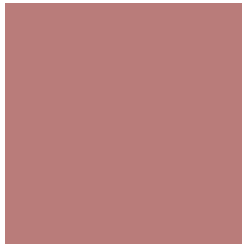
56, 33.179, 201.434



8, 9.999, 202.112

Previews

White Background



This preview shows how the CIELCh color 58, 25.853, 24.694 looks on a white background.

Color Contrast Check

Large Text (above 18pt) WCAG AA ✓ Pass

Any Text WCAG AA ✗ Fail

Large Text (above 18pt) WCAG AAA ✗ Fail

Any Text WCAG AAA ✗ Fail

Black Background



This preview shows how the CIELCh color 58, 25.853, 24.694 looks on a black background.

Color Contrast Check

Large Text (above 18pt) WCAG AA ✓ Pass

Any Text WCAG AA ✓ Pass

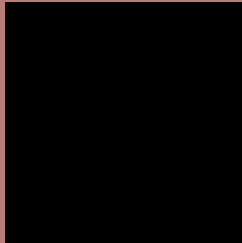
Large Text (above 18pt) WCAG AAA ✓ Pass

Any Text WCAG AAA × Fail

If you want to check with other color combinations, try the [Color Contrast Checker](#).

CIELCh 58, 25.853, 24.694

Background



This preview shows how black text looks on a background with the CIELCh color 58, 25.853, 24.694.



This preview shows how white text looks on a background with the CIELCh color 58, 25.853, 24.694.

Color Blindness Simulation

Color vision deficiency is a very complex topic, and I could not describe the different causes any better than Wikipedia does, so if you want to learn more, you should check out their [article about color blindness](#).

Dichromacy



Original Color

58, 25.853, 24.694

Protanopia

58, 5.628, 84.107

Deuteranopia

58, 13.580, 55.716



Tritanopia
58, 26.338, 11.501

Trichromacy



Original Color
58, 25.853, 24.694

Protanomaly
58, 11.278, 37.846

Deuteranomaly
58, 17.316, 37.937

Tritanomaly
58, 25.867, 16.189

Monochromacy



Original Color
58, 25.853, 24.694

Achromatopsia
59, 0.008, 296.813

Achromatomaly
58, 8.871, 20.275

CSS Examples

Text

The CSS property to change the color of the text to CIELCh 58, 25.853, 24.694 is called "color". The color property can be set on classes, ids or directly on the HTML element.

This example shows how text in the color `rgb(185, 124, 122)` looks like.

```
.text, #text, p{  
    color:rgb(185, 124, 122)  
}
```

If you want to add a text shadow in that color use the text-shadow property, you can generate a text shadow directly with our [CSS Text Shadow Generator](#).

Here you see how black text with a 4 pixel rgb(185, 124, 122) colored shadow looks like.

```
.shadow{ text-shadow: 4px 4px 2px rgb(185, 124, 122) }
```

Border

The CSS property to change the border of an element to CIELCh 58, 25.853, 24.694 is called "border". The border property can be set on classes, ids or directly on the HTML element.

This example shows the color as border, it can be applied via the CSS property "border" or "border-color".

```
.border, #border, table{ border:4px solid rgb(185, 124, 122) }
```

If only the border color should be changed use the property `border-color`.

```
.border{ border-color:rgb(185, 124, 122) }
```

If you want to add a box shadow in that color use:

Here you see how a box with a 4 pixel `rgb(185, 124, 122)` colored shadow looks like.

```
.boxshadow{ -moz-box-shadow:4px 4px 4px  
4px rgb(185, 124, 122); -webkit-box-  
shadow:4px 4px 4px 4px rgb(185, 124, 122);  
box-shadow:4px 4px 4px 4px rgb(185, 124,  
122) }
```

Background

The CSS property to change the background color of an element to CIELCh 58, 25.853, 24.694 is called "background". The background property can be set on classes, ids or directly on the HTML element.

```
.background, #background, body{  
background: rgb(185, 124, 122) }
```

If only the background color should be changed can be used:

```
.background{ background-color: rgb(185,  
124, 122) }
```

This example shows the color as background, it is applied via the CSS property "background".

To optimize and compress your CSS code, you can use our [online CSS compressor and optimizer](#) based on csstidy. If you want to create a linear or radial gradient as background or border, check our [CSS Gradient Generator](#).

Hey! You found this booklet interesting? Support Converting Colors with the new Membership Option!

The pro membership hides all ads, plus gives you double the colors in the color bucket, and more awesome pro features!

[Learn more, Memberships starting at \\$2.50/m!](#)

**Follow me
on Twitter!**

@ConvertingColor