

Converting Colors

CIELCh(58, 26.132, 22.319)

Have a look what the booklet for
CIELCh(58, 26.132, 22.319) contains.

CIELCh(58, 26.132, 22.319)	3
<i>Conversions</i>	4
<i>Details</i>	6
<i>Harmonies</i>	11
<i>Previews</i>	20
<i>Color Blindness Simulation</i>	23
<i>CSS Examples</i>	26

Color

CIELCh(58, 26.132, 22.319)

Conversions

Conversions Part 1

Format	Color
Hex	B97B7B
RGB	185, 123, 123
RGB Percent	73%, 48%, 48%
CMY	0.2740, 0.5171, 0.5172
CMYK	0.00, 0.33, 0.33, 0.27
HSL	0°, 31%, 60%
HSV	0°, 33%, 73%
XYZ	30.7215, 25.9610, 22.1708
YIQ	141.5380, 36.9520, 13.1440

Conversions

Conversions Part 2

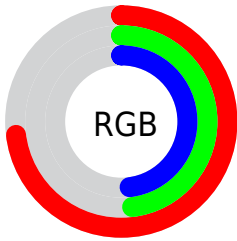
Format	Color
RYB	185, 123, 123
Decimal	12155771
CIELab	58.00, 24.17, 9.92
CIElCh	58, 26.132, 22.319
Yxy	25.9610, 0.3896, 0.3292
Android (android.graphics.Color)	4290345851 (0xFFB97B7B)
YUV	141.5380, -9.1392, 38.1162
Hunter-Lab	50.9519, 18.4607, 9.8674

Details

The CIELCh color **58, 26.132, 22.319** is a dark color, and the websafe version is hex **996666**. A complement of this color would be **71, 20.768, 197.797**, and the grayscale version is **59, 0.008, 296.813**.

A 20% lighter version of the original color is **78, 25.965, 22.767**, and **38, 26.313, 22.385** is the 20% darker color. If you saturate the color by 10%, you get **53, 35.101, 23.832**, and if you desaturate by 10%, it is **63, 17.661, 21.163**.

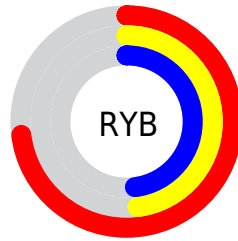
Distribution



Red (73%)

Green (48%)

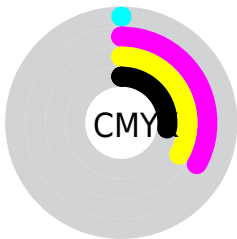
Blue (48%)



Red (73%)

Yellow (48%)

Blue (48%)

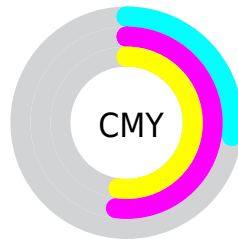


Cyan (0%)

Magenta (33%)

Yellow (33%)

Black (27%)



Cyan (27%)

Magenta (52%)

Yellow (52%)

Brightness & Saturation Gradients

These gradients show how the CIELCh color 58, 26.132, 22.319 changes by changing the brightness by 10 percent. The first figure shows a shift by +10% for each color and the second figure -10%.

Similar to the brightness gradients but the following saturation gradients show a change of the CIELCh color 58, 26.132, 22.319 by changing the saturation by 10% instead.

■ 58, 26.132, 22.319

■ 58, 26.132, 22.319

■ 100, 26.132,
22.319

■ 48, 26.132, 22.319

■ 78, 26.132, 22.319

■ 38, 26.132, 22.319

■ 88, 26.132, 22.319

■ 28, 26.132, 22.319

■ 98, 26.132, 22.319

■ 18, 26.132, 22.319

■ 8, 26.132, 22.319

■ 0, 26.132, 22.319

■ 58, 26.132, 22.319

■ 58, 26.132, 22.319

■ 53, 35.101, 23.832

■ 63, 17.661, 21.163

■ 49, 44.432, 25.796

■ 68, 9.759, 20.254

45, 53.890, 28.318

73, 2.431, 19.407

42, 63.149, 31.433

79, 4.348, 199.204

40, 71.725, 34.961

84, 10.624,
198.709

39, 78.621, 38.206

90, 16.449,
198.352

38, 82.213, 39.999

95, 21.873,
198.069

96, 22.519,
198.030

Harmonies

Complementary

The Complementary color scheme is a pair of colors which are on the opposite of each other on the color wheel.



58, 26.132, 22.319



71, 20.768, 197.797

Rectangle

The Rectangle color scheme consists of four colors that form a rectangle on the color wheel.



58, 26.132, 22.319



58, 26.132, 72.319



58, 26.132, 202.319



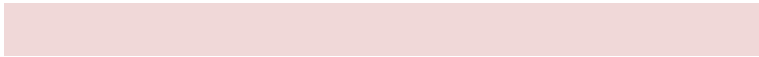
58, 26.132, 252.319

Sweetspot

The Sweet Spot groups the original color and five complimentary colors.



58, 26.130, 22.323



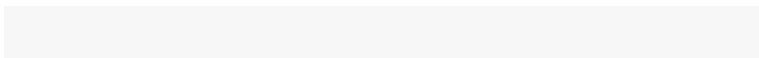
88, 8.804, 19.988



60, 41.158, 326.230



46, 6.036, 20.098



97, 0.011, 296.813



50, 0.007, 296.813

Same Dimension

The Same Dimension uses a secret algorithm to generate beautiful new colors.



58, 26.130, 22.323



70, 39.453, 23.362



66, 21.739, 71.289



36, 4.003, 19.923



32, 71.869, 39.600



2, 10.637, 19.411

Inverse Universe

The Inverse Universe completely reimagines the original color for something new.



71, 20.768, 197.797



89, 29.646, 197.514



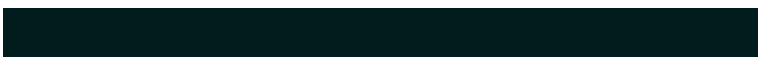
62, 19.811, 260.788



38, 3.777, 198.993



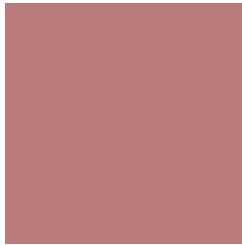
58, 34.639, 196.400



8, 10.517, 197.750

Previews

White Background



This preview shows how the CIELCh color 58, 26.132, 22.319 looks on a white background.

Color Contrast Check

Large Text (above 18pt) WCAG AA ✓ Pass

Any Text WCAG AA ✗ Fail

Large Text (above 18pt) WCAG AAA ✗ Fail

Any Text WCAG AAA ✗ Fail

Black Background



This preview shows how the CIE LCh color 58, 26.132, 22.319 looks on a black background.

Color Contrast Check

Large Text (above 18pt) WCAG AA ✓ Pass

Any Text WCAG AA ✓ Pass

Large Text (above 18pt) WCAG AAA ✓ Pass

Any Text WCAG AAA × Fail

If you want to check with other color combinations, try the [Color Contrast Checker](#).

CIELCh 58, 26.132, 22.319

Background



This preview shows how black text looks on a background with the CIELCh color 58, 26.132, 22.319.



This preview shows how white text looks on a background with the CIELCh color 58, 26.132, 22.319.

Color Blindness Simulation

Color vision deficiency is a very complex topic, and I could not describe the different causes any better than Wikipedia does, so if you want to learn more, you should check out their [article about color blindness](#).

Dichromacy



Original Color

58, 26.132, 22.319

Protanopia

58, 4.428, 82.798

Deuteranopia

58, 13.210, 56.789



Tritanopia
58, 26.749, 11.729

Trichromacy



Original Color
58, 26.132, 22.319

Protanomaly
58, 10.923, 32.337

Deuteranomaly
58, 16.872, 38.329

Tritanomaly
58, 26.730, 15.320

Monochromacy



Original Color
58, 26.132, 22.319

Achromatopsia
59, 0.008, 296.813

Achromatomaly
58, 9.284, 20.320

CSS Examples

Text

The CSS property to change the color of the text to CIELCh 58, 26.132, 22.319 is called "color". The color property can be set on classes, ids or directly on the HTML element.

This example shows how text in the color `rgb(185, 123, 123)` looks like.

```
.text, #text, p{  
    color:rgb(185, 123, 123)  
}
```

If you want to add a text shadow in that color use the text-shadow property, you can generate a text shadow directly with our [CSS Text Shadow Generator](#).

Here you see how black text with a 4 pixel rgb(185, 123, 123) colored shadow looks like.

```
.shadow{ text-shadow: 4px 4px 2px rgb(185, 123, 123) }
```

Border

The CSS property to change the border of an element to CIELCh 58, 26.132, 22.319 is called "border". The border property can be set on classes, ids or directly on the HTML element.

This example shows the color as border, it can be applied via the CSS property "border" or "border-color".

```
.border, #border, table{ border:4px solid rgb(185, 123, 123) }
```

If only the border color should be changed use the property `border-color`.

```
.border{ border-color:rgb(185, 123, 123) }
```

If you want to add a box shadow in that color use:

Here you see how a box with a 4 pixel `rgb(185, 123, 123)` colored shadow looks like.

```
.boxshadow{ -moz-box-shadow:4px 4px 4px  
4px rgb(185, 123, 123); -webkit-box-  
shadow:4px 4px 4px 4px rgb(185, 123, 123);  
box-shadow:4px 4px 4px 4px rgb(185, 123,  
123) }
```

Background

The CSS property to change the background color of an element to CIELCh 58, 26.132, 22.319 is called "background". The background property can be set on classes, ids or directly on the HTML element.

```
.background, #background, body{  
background: rgb(185, 123, 123) }
```

If only the background color should be changed can be used:

```
.background{ background-color: rgb(185,  
123, 123) }
```

This example shows the color as background, it is applied via the CSS property "background".

To optimize and compress your CSS code, you can use our [online CSS compressor and optimizer](#) based on csstidy. If you want to create a linear or radial gradient as background or border, check our [CSS Gradient Generator](#).

Hey! You found this booklet interesting? Support Converting Colors with the new Membership Option!

The pro membership hides all ads, plus gives you double the colors in the color bucket, and more awesome pro features!

[Learn more, Memberships starting at \\$2.50/m!](#)

**Follow me
on Twitter!**

@ConvertingColor