

Converting Colors

CIELCh(58, 36.886, 61.974)

Have a look what the booklet for
CIELCh(58, 36.886, 61.974) contains.

CIELCh(58, 36.871, 62.211)	3
<i>Conversions</i>	4
<i>Details</i>	6
<i>Harmonies</i>	11
<i>Previews</i>	20
<i>Color Blindness Simulation</i>	23
<i>CSS Examples</i>	26

Color

CIELCh(58, 36.871, 62.211)

Conversions

Conversions Part 1

Format	Color
Hex	B87F53
RGB	184, 127, 83
RGB Percent	72%, 50%, 33%
CMY	0.2788, 0.5023, 0.6748
CMYK	0.00, 0.31, 0.55, 0.28
HSL	26°, 42%, 52%
HSV	26°, 55%, 72%
XYZ	28.8834, 25.9610, 11.6572
YIQ	139.0270, 48.0960, -1.6000

Conversions

Conversions Part 2

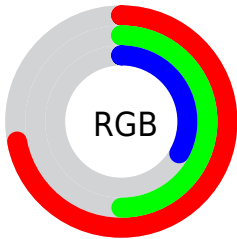
Format	Color
RYB	184, 161, 83
Decimal	12091219
CIELab	58.00, 17.19, 32.62
CIElCh	58, 36.871, 62.211
Yxy	25.9610, 0.4343, 0.3904
Android (android.graphics.Color)	4290281299 (0xFFB87F53)
YUV	139.0270, -27.6213, 39.4413
Hunter-Lab	50.9519, 12.0215, 22.1015

Details

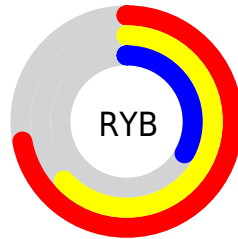
The CIELCh color **58, 36.871, 62.211** is a dark color, and the websafe version is hex **CC9966**. A complement of this color would be **56, 29.314, 258.492**, and the grayscale version is **58, 0.007, 296.813**.

A 20% lighter version of the original color is **78, 37.157, 62.264**, and **38, 37.098, 62.558** is the 20% darker color. If you saturate the color by 10%, you get **55, 44.685, 61.164**, and if you desaturate by 10%, it is **61, 29.323, 63.259**.

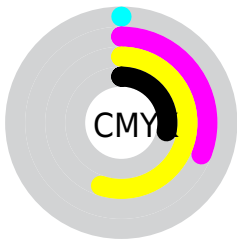
Distribution



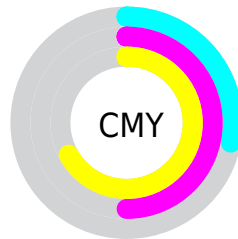
- Red (72%)
- Green (50%)
- Blue (33%)



- Red (72%)
- Yellow (63%)
- Blue (33%)



- Cyan (0%)
- Magenta (31%)
- Yellow (55%)
- Black (28%)



- Cyan (28%)
- Magenta (50%)
- Yellow (67%)

Brightness & Saturation Gradients

These gradients show how the CIELCh color 58, 36.871, 62.211 changes by changing the brightness by 10 percent. The first figure shows a shift by +10% for each color and the second figure -10%.

Similar to the brightness gradients but the following saturation gradients show a change of the CIELCh color 58, 36.871, 62.211 by changing the saturation by 10% instead.

■ 58, 36.871, 62.211

■ 58, 36.871, 62.211

■ 100, 36.871,
62.211

■ 48, 36.871, 62.211

■ 78, 36.871, 62.211

■ 38, 36.871, 62.211

■ 88, 36.871, 62.211

■ 28, 36.871, 62.211

■ 98, 36.871, 62.211

■ 18, 36.871, 62.211

■ 8, 36.871, 62.211

■ 0, 36.871, 62.211

■ 58, 36.871, 62.211

■ 58, 36.871, 62.211

■ 55, 44.685, 61.164

■ 61, 29.323, 63.259

■ 53, 52.533, 60.031

■ 64, 22.138, 64.318

50, 59.914, 58.642

67, 15.341, 65.394

48, 65.940, 56.655

70, 8.921, 66.472

47, 68.706, 55.624

73, 2.854, 67.478

76, 2.895, 248.843

80, 8.357, 249.830

83, 13.567,
250.864

86, 18.554,
251.877

Harmonies

Complementary

The Complementary color scheme is a pair of colors which are on the opposite of each other on the color wheel.



58, 36.871, 62.211



56, 29.314, 258.492

Rectangle

The Rectangle color scheme consists of four colors that form a rectangle on the color wheel.



58, 36.871, 62.211



58, 36.871, 112.211



58, 36.871, 242.211



58, 36.871, 292.211

Sweetspot

The Sweet Spot groups the original color and five complimentary colors.



58, 36.870, 62.215



88, 11.920, 66.326



50, 48.910, 345.670



46, 8.090, 66.107



97, 0.011, 296.813



50, 0.007, 296.813

Same Dimension

The Same Dimension uses a secret algorithm to generate beautiful new colors.



58, 36.870, 62.215



70, 56.620, 60.926



71, 49.340, 101.812



37, 3.332, 67.058



40, 60.490, 56.149



5, 8.710, 54.306

Inverse Universe

The Inverse Universe completely reimagines the original color for something new.



56, 29.314, 258.492



67, 42.678, 262.531



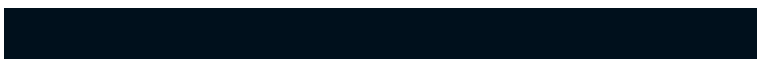
42, 56.614, 295.961



37, 3.230, 249.331



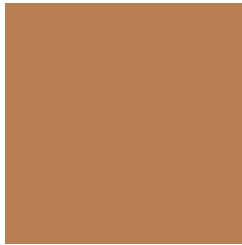
37, 43.295, 276.291



4, 9.622, 261.585

Previews

White Background



This preview shows how the CIELCh color 58, 36.871, 62.211 looks on a white background.

Color Contrast Check

Large Text (above 18pt) WCAG AA ✓ Pass

Any Text WCAG AA × Fail

Large Text (above 18pt) WCAG AAA × Fail

Any Text WCAG AAA × Fail

Black Background



This preview shows how the CIELCh color 58, 36.871, 62.211 looks on a black background.

Color Contrast Check

Large Text (above 18pt) WCAG AA ✓ Pass

Any Text WCAG AA ✓ Pass

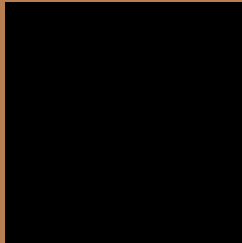
Large Text (above 18pt) WCAG AAA ✓ Pass

Any Text WCAG AAA × Fail

If you want to check with other color combinations, try the [Color Contrast Checker](#).

CIELCh 58, 36.871, 62.211

Background



This preview shows how black text looks on a background with the CIELCh color 58, 36.871, 62.211.



This preview shows how white text looks on a background with the CIELCh color 58, 36.871, 62.211.

Color Blindness Simulation

Color vision deficiency is a very complex topic, and I could not describe the different causes any better than Wikipedia does, so if you want to learn more, you should check out their [article about color blindness](#).

Dichromacy



Original Color

58, 36.871, 62.211

Protanopia

58, 29.552, 96.342

Deuteranopia

58, 33.652, 76.679



Tritanopia
58, 28.021, 12.409

Trichromacy



Original Color
58, 36.871, 62.211

Protanomaly
58, 30.724, 81.686

Deuteranomaly
58, 34.694, 71.468

Tritanomaly
58, 28.460, 33.555

Monochromacy



Original Color
58, 36.871, 62.211

Achromatopsia
58, 0.007, 296.813

Achromatomaly
58, 12.407, 66.582

CSS Examples

Text

The CSS property to change the color of the text to CIELCh 58, 36.871, 62.211 is called "color". The color property can be set on classes, ids or directly on the HTML element.

This example shows how text in the color `rgb(184, 127, 83)` looks like.

```
.text, #text, p{  
    color:rgb(184, 127, 83)  
}
```

If you want to add a text shadow in that color use the text-shadow property, you can generate a text shadow directly with our [CSS Text Shadow Generator](#).

Here you see how black text with a 4 pixel rgb(184, 127, 83) colored shadow looks like.

```
.shadow{ text-shadow: 4px 4px 2px rgb(184, 127, 83) }
```

Border

The CSS property to change the border of an element to CIELCh 58, 36.871, 62.211 is called "border". The border property can be set on classes, ids or directly on the HTML element.

This example shows the color as border, it can be applied via the CSS property "border" or "border-color".

```
.border, #border, table{ border:4px solid rgb(184, 127, 83) }
```

If only the border color should be changed use the property `border-color`.

```
.border{ border-color:rgb(184, 127, 83) }
```

If you want to add a box shadow in that color use:

Here you see how a box with a 4 pixel `rgb(184, 127, 83)` colored shadow looks like.

```
.boxshadow{ -moz-box-shadow:4px 4px 4px  
4px rgb(184, 127, 83); -webkit-box-  
shadow:4px 4px 4px 4px rgb(184, 127, 83);  
box-shadow:4px 4px 4px 4px rgb(184, 127,  
83) }
```

Background

The CSS property to change the background color of an element to CIELCh 58, 36.871, 62.211 is called "background". The background property can be set on classes, ids or directly on the HTML element.

```
.background, #background, body{  
background: rgb(184, 127, 83) }
```

If only the background color should be changed can be used:

```
.background{ background-color: rgb(184,  
127, 83) }
```

This example shows the color as background, it is applied via the CSS property "background".

To optimize and compress your CSS code, you can use our [online CSS compressor and optimizer](#) based on csstidy. If you want to create a linear or radial gradient as background or border, check our [CSS Gradient Generator](#).

Hey! You found this booklet interesting? Support Converting Colors with the new Membership Option!

The pro membership hides all ads, plus gives you double the colors in the color bucket, and more awesome pro features!

[Learn more, Memberships starting at \\$2.50/m!](#)

**Follow me
on Twitter!**

@ConvertingColor