

Converting Colors

CIELCh(58, 38.771, 71.455)

Have a look what the booklet for
CIELCh(58, 38.771, 71.455) contains.

CIELCh(58, 38.693, 71.497)	3
<i>Conversions</i>	4
<i>Details</i>	6
<i>Harmonies</i>	11
<i>Previews</i>	20
<i>Color Blindness Simulation</i>	23
<i>CSS Examples</i>	26

Color

CIELCh(58, 38.693, 71.497)

Conversions

Conversions Part 1

Format	Color
Hex	B2824B
RGB	178, 130, 75
RGB Percent	70%, 51%, 29%
CMY	0.3017, 0.4900, 0.7057
CMYK	0.00, 0.27, 0.58, 0.30
HSL	32°, 41%, 50%
HSV	32°, 58%, 70%
XYZ	27.6361, 25.9610, 10.2204
YIQ	138.0820, 46.2630, -6.9290

Conversions

Conversions Part 2

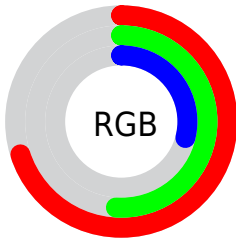
Format	Color
R_{YB}	165, 178, 75
Decimal	11698763
CIE _{Lab}	58.00, 12.28, 36.69
CIE _{LCh}	58, 38.693, 71.497
Yxy	25.9610, 0.4330, 0.4068
Android (android.graphics.Color)	4289888843 (0xFFB2824B)
YUV	138.0820, -31.0994, 35.0081
Hunter-Lab	50.9519, 7.6516, 23.7735

Details

The CIELCh color **58, 38.693, 71.497** is a dark color, and the websafe version is hex **CC9966**. A complement of this color would be **51, 34.045, 270.708**, and the grayscale version is **58, 0.007, 296.813**.

A 20% lighter version of the original color is **78, 38.717, 71.731**, and **38, 38.557, 71.755** is the 20% darker color. If you saturate the color by 10%, you get **56, 45.932, 70.069**, and if you desaturate by 10%, it is **60, 31.466, 72.861**.

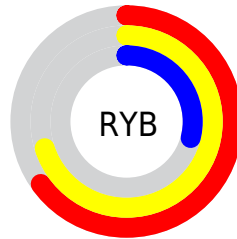
Distribution



Red (70%)

Green (51%)

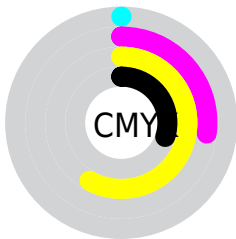
Blue (29%)



Red (65%)

Yellow (70%)

Blue (29%)

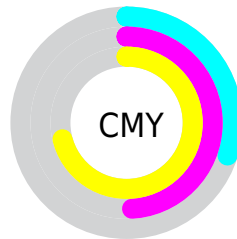


Cyan (0%)

Magenta (27%)

Yellow (58%)

Black (30%)



Cyan (30%)

Magenta (49%)

Yellow (71%)

Brightness & Saturation Gradients

These gradients show how the CIELCh color 58, 38.693, 71.497 changes by changing the brightness by 10 percent. The first figure shows a shift by +10% for each color and the second figure -10%.

Similar to the brightness gradients but the following saturation gradients show a change of the CIELCh color 58, 38.693, 71.497 by changing the saturation by 10% instead.

■ 58, 38.693, 71.497

■ 58, 38.693, 71.497

■ 100, 38.693,
71.497

■ 48, 38.693, 71.497

■ 78, 38.693, 71.497

■ 38, 38.693, 71.497

■ 88, 38.693, 71.497

■ 28, 38.693, 71.497

■ 98, 38.693, 71.497

■ 18, 38.693, 71.497

■ 8, 38.693, 71.497

■ 0, 38.693, 71.497

■ 58, 38.693, 71.497

■ 58, 38.693, 71.497

■ 56, 45.932, 70.069

■ 60, 31.466, 72.861

■ 54, 52.852, 68.477

■ 63, 24.412, 74.186

51, 58.854, 66.542

65, 17.601, 75.487

50, 63.302, 64.067

68, 11.051, 76.760

49, 64.258, 63.573

71, 4.760, 77.981

73, 1.288, 259.515

76, 7.115, 260.504

79, 12.742,
261.631

81, 18.190,
262.725

Harmonies

Complementary

The Complementary color scheme is a pair of colors which are on the opposite of each other on the color wheel.



58, 38.693, 71.497



51, 34.045, 270.708

Rectangle

The Rectangle color scheme consists of four colors that form a rectangle on the color wheel.



58, 38.693, 71.497



58, 38.693, 121.497



58, 38.693, 251.497



58, 38.693, 301.497

Sweetspot

The Sweet Spot groups the original color and five complimentary colors.



58, 38.693, 71.501



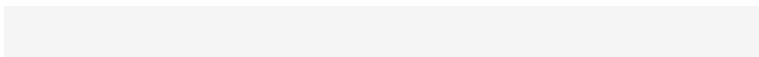
86, 13.039, 76.830



47, 47.400, 352.359



46, 8.828, 76.582



96, 0.011, 296.813



49, 0.007, 296.813

Same Dimension

The Same Dimension uses a secret algorithm to generate beautiful new colors.



58, 38.693, 71.501



71, 58.030, 69.715



70, 53.242, 106.462



36, 3.452, 77.808



42, 57.356, 64.051



5, 7.673, 66.755

Inverse Universe

The Inverse Universe completely reimagines the original color for something new.



51, 34.045, 270.708



60, 50.156, 274.891



38, 62.872, 299.710



36, 3.396, 260.284



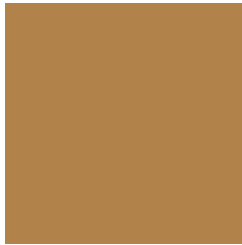
31, 51.964, 286.545



3, 9.066, 268.695

Previews

White Background



This preview shows how the CIELCh color 58, 38.693, 71.497 looks on a white background.

Color Contrast Check

Large Text (above 18pt) WCAG AA ✓ Pass

Any Text WCAG AA × Fail

Large Text (above 18pt) WCAG AAA × Fail

Any Text WCAG AAA × Fail

Black Background



This preview shows how the CIE LCh color 58, 38.693, 71.497 looks on a black background.

Color Contrast Check

Large Text (above 18pt) WCAG AA ✓ Pass

Any Text WCAG AA ✓ Pass

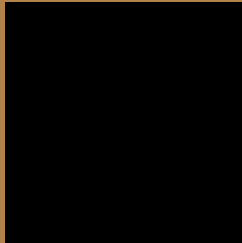
Large Text (above 18pt) WCAG AAA ✓ Pass

Any Text WCAG AAA × Fail

If you want to check with other color combinations, try the [Color Contrast Checker](#).

CIELCh 58, 38.693, 71.497

Background



This preview shows how black text looks on a background with the CIELCh color 58, 38.693, 71.497.



This preview shows how white text looks on a background with the CIELCh color 58, 38.693, 71.497.

Color Blindness Simulation

Color vision deficiency is a very complex topic, and I could not describe the different causes any better than Wikipedia does, so if you want to learn more, you should check out their [article about color blindness](#).

Dichromacy



Original Color

58, 38.693, 71.497

Protanopia

58, 34.899, 96.416

Deuteranopia

58, 37.772, 78.581



Tritanopia
58, 25.118, 9.486

Trichromacy



Original Color
58, 38.693, 71.497

Protanomaly
58, 35.176, 86.517

Deuteranomaly
58, 38.335, 75.891

Tritanomaly
58, 25.362, 39.648

Monochromacy



Original Color
58, 38.693, 71.497

Achromatopsia
57, 0.007, 296.813

Achromatomaly
57, 13.711, 75.133

CSS Examples

Text

The CSS property to change the color of the text to CIELCh 58, 38.693, 71.497 is called "color". The color property can be set on classes, ids or directly on the HTML element.

This example shows how text in the color `rgb(178, 130, 75)` looks like.

```
.text, #text, p{  
    color:rgb(178, 130, 75)  
}
```

If you want to add a text shadow in that color use the text-shadow property, you can generate a text shadow directly with our [CSS Text Shadow Generator](#).

Here you see how black text with a 4 pixel rgb(178, 130, 75) colored shadow looks like.

```
.shadow{ text-shadow: 4px 4px 2px rgb(178, 130, 75) }
```

Border

The CSS property to change the border of an element to CIELCh 58, 38.693, 71.497 is called "border". The border property can be set on classes, ids or directly on the HTML element.

This example shows the color as border, it can be applied via the CSS property "border" or "border-color".

```
.border, #border, table{ border:4px solid rgb(178, 130, 75) }
```

If only the border color should be changed use the property `border-color`.

```
.border{ border-color:rgb(178, 130, 75) }
```

If you want to add a box shadow in that color use:

Here you see how a box with a 4 pixel `rgb(178, 130, 75)` colored shadow looks like.

```
.boxshadow{ -moz-box-shadow:4px 4px 4px  
4px rgb(178, 130, 75); -webkit-box-  
shadow:4px 4px 4px 4px rgb(178, 130, 75);  
box-shadow:4px 4px 4px 4px rgb(178, 130,  
75) }
```

Background

The CSS property to change the background color of an element to CIELCh 58, 38.693, 71.497 is called "background". The background property can be set on classes, ids or directly on the HTML element.

```
.background, #background, body{  
background: rgb(178, 130, 75) }
```

If only the background color should be changed can be used:

```
.background{ background-color: rgb(178,  
130, 75) }
```

This example shows the color as background, it is applied via the CSS property "background".

To optimize and compress your CSS code, you can use our [online CSS compressor and optimizer](#) based on csstidy. If you want to create a linear or radial gradient as background or border, check our [CSS Gradient Generator](#).

Hey! You found this booklet interesting? Support Converting Colors with the new Membership Option!

The pro membership hides all ads, plus gives you double the colors in the color bucket, and more awesome pro features!

[Learn more, Memberships starting at \\$2.50/m!](#)

**Follow me
on Twitter!**

@ConvertingColor