

Converting Colors

CIELCh(58, 40.560, 6.765)

Have a look what the booklet for
CIELCh(58, 40.560, 6.765) contains.

CIELCh(58, 40.546, 6.470)	3
<i>Conversions</i>	4
<i>Details</i>	6
<i>Harmonies</i>	11
<i>Previews</i>	20
<i>Color Blindness Simulation</i>	23
<i>CSS Examples</i>	26

Color

CIELCh(58, 40.546, 6.470)

Conversions

Conversions Part 1

Format	Color
Hex	CE6E85
RGB	206, 110, 133
RGB Percent	81%, 43%, 52%
CMY	0.1922, 0.5687, 0.4785
CMYK	0.00, 0.47, 0.35, 0.19
HSL	346°, 49%, 62%
HSV	346°, 47%, 81%
XYZ	35.2558, 25.9610, 25.3378
YIQ	141.3260, 49.8330, 27.5050

Conversions

Conversions Part 2

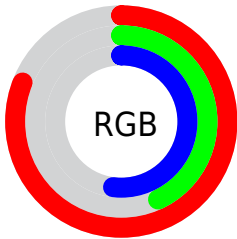
Format	Color
R_{YB}	206, 110, 133
Decimal	13528709
CIE _{Lab}	58.00, 40.29, 4.57
CIE _{LCh}	58, 40.546, 6.470
Yxy	25.9610, 0.4073, 0.2999
Android (android.graphics.Color)	4291718789 (0xFFCE6E85)
YUV	141.3260, -4.1047, 56.7191
Hunter-Lab	50.9519, 34.3459, 6.1821

Details

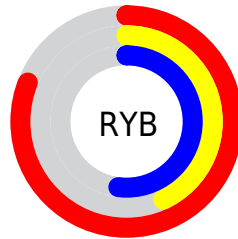
The CIELCh color **58, 40.546, 6.470** is a dark color, and the websafe version is hex **CC6666**. A complement of this color would be **77, 34.014, 175.507**, and the grayscale version is **59, 0.008, 296.813**.

A 20% lighter version of the original color is **77, 36.524, 4.412**, and **38, 40.476, 6.417** is the 20% darker color. If you saturate the color by 10%, you get **54, 49.334, 8.741**, and if you desaturate by 10%, it is **63, 31.508, 4.652**.

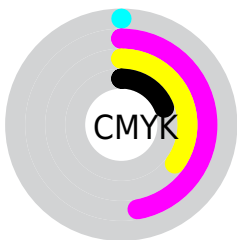
Distribution



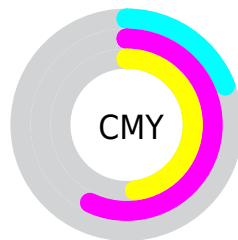
- Red (81%)
- Green (43%)
- Blue (52%)



- Red (81%)
- Yellow (43%)
- Blue (52%)



- Cyan (0%)
- Magenta (47%)
- Yellow (35%)
- Black (19%)



- Cyan (19%)
- Magenta (57%)
- Yellow (48%)

Brightness & Saturation Gradients

These gradients show how the CIELCh color 58, 40.546, 6.470 changes by changing the brightness by 10 percent. The first figure shows a shift by +10% for each color and the second figure -10%.

Similar to the brightness gradients but the following saturation gradients show a change of the CIELCh color 58, 40.546, 6.470 by changing the saturation by 10% instead.

 58, 40.546, 6.470

 58, 40.546, 6.470

 100, 40.546, 6.470

 48, 40.546, 6.470

 78, 40.546, 6.470

 38, 40.546, 6.470

 88, 40.546, 6.470

 28, 40.546, 6.470

 98, 40.546, 6.470

 18, 40.546, 6.470

 8, 40.546, 6.470

 0, 40.546, 6.470

 58, 40.546, 6.470

 58, 40.546, 6.470

 54, 49.334, 8.741

 63, 31.508, 4.652

 50, 57.518, 11.606

 68, 22.515, 3.162

47, 64.735, 15.229

73, 13.757, 1.911

45, 70.781, 19.724

79, 5.344, 0.803

44, 75.761, 25.010

85, 2.675, 180.183

43, 77.427, 26.793

90, 10.288,
179.248

96, 17.510,
178.525

97, 16.257,
198.426

Harmonies

Complementary

The Complementary color scheme is a pair of colors which are on the opposite of each other on the color wheel.



58, 40.546, 6.470



77, 34.014, 175.507

Rectangle

The Rectangle color scheme consists of four colors that form a rectangle on the color wheel.



58, 40.546, 6.470



58, 40.546, 56.470



58, 40.546, 186.470



58, 40.546, 236.470

Sweetspot

The Sweet Spot groups the original color and five complimentary colors.



58, 40.543, 6.472



91, 13.719, 1.634



58, 58.740, 319.252



47, 9.519, 1.883



0, 0.000, 0.000



53, 0.007, 296.813

Same Dimension

The Same Dimension uses a secret algorithm to generate beautiful new colors.



58, 40.543, 6.472



66, 58.040, 8.764



63, 34.819, 44.290



40, 4.586, 1.109



34, 65.411, 25.834



4, 18.332, 7.782

Inverse Universe

The Inverse Universe completely reimagines the original color for something new.



58, 40.543, 6.472



66, 58.040, 8.764



70, 25.058, 229.846



40, 4.586, 1.109



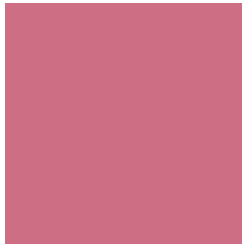
34, 65.411, 25.834



4, 18.332, 7.782

Previews

White Background



This preview shows how the CIELCh color 58, 40.546, 6.470 looks on a white background.

Color Contrast Check

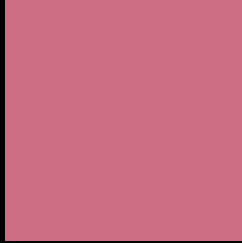
Large Text (above 18pt) WCAG AA ✓ Pass

Any Text WCAG AA ✗ Fail

Large Text (above 18pt) WCAG AAA ✗ Fail

Any Text WCAG AAA ✗ Fail

Black Background



This preview shows how the CIE LCh color 58, 40.546, 6.470 looks on a black background.

Color Contrast Check

Large Text (above 18pt) WCAG AA ✓ Pass

Any Text WCAG AA ✓ Pass

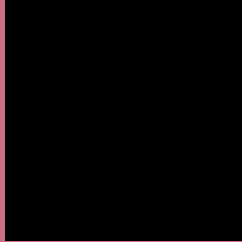
Large Text (above 18pt) WCAG AAA ✓ Pass

Any Text WCAG AAA × Fail

If you want to check with other color combinations, try the [Color Contrast Checker](#).

CIELCh 58, 40.546, 6.470

Background



This preview shows how black text looks on a background with the CIELCh color 58, 40.546, 6.470.



This preview shows how white text looks on a background with the CIELCh color 58, 40.546, 6.470.

Color Blindness Simulation

Color vision deficiency is a very complex topic, and I could not describe the different causes any better than Wikipedia does, so if you want to learn more, you should check out their [article about color blindness](#).

Dichromacy



Original Color

58, 40.546, 6.470

Protanopia

58, 6.273, 294.368

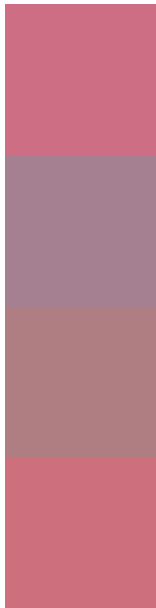
Deuteranopia

58, 9.649, 40.717



Tritanopia
58, 39.268, 17.857

Trichromacy



Original Color
58, 40.546, 6.470

Protanomaly
57, 16.845, 348.766

Deuteranomaly
58, 20.308, 15.336

Tritanomaly
58, 39.503, 13.187

Monochromacy



Original Color
58, 40.546, 6.470

Achromatopsia
59, 0.008, 296.813

Achromatomaly
58, 14.758, 3.232

CSS Examples

Text

The CSS property to change the color of the text to CIELCh 58, 40.546, 6.470 is called "color". The color property can be set on classes, ids or directly on the HTML element.

This example shows how text in the color `rgb(206, 110, 133)` looks like.

```
.text, #text, p{  
    color:rgb(206, 110, 133)  
}
```

If you want to add a text shadow in that color use the text-shadow property, you can generate a text shadow directly with our [CSS Text Shadow Generator](#).

Here you see how black text with a 4 pixel rgb(206, 110, 133) colored shadow looks like.

```
.shadow{ text-shadow: 4px 4px 2px rgb(206, 110, 133) }
```

Border

The CSS property to change the border of an element to CIELCh 58, 40.546, 6.470 is called "border". The border property can be set on classes, ids or directly on the HTML element.

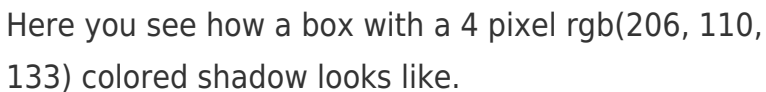
This example shows the color as border, it can be applied via the CSS property "border" or "border-color".

```
.border, #border, table{ border:4px solid rgb(206, 110, 133) }
```

If only the border color should be changed use the property `border-color`.

```
.border{ border-color:rgb(206, 110, 133) }
```

If you want to add a box shadow in that color use:



Here you see how a box with a 4 pixel `rgb(206, 110, 133)` colored shadow looks like.

```
.boxshadow{ -moz-box-shadow:4px 4px 4px 4px rgb(206, 110, 133); -webkit-box-shadow:4px 4px 4px 4px rgb(206, 110, 133); box-shadow:4px 4px 4px 4px rgb(206, 110, 133) }
```

Background

The CSS property to change the background color of an element to CIELCh 58, 40.546, 6.470 is called "background". The background property can be set on classes, ids or directly on the HTML element.

```
.background, #background, body{  
background: rgb(206, 110, 133) }
```

If only the background color should be changed can be used:

```
.background{ background-color: rgb(206,  
110, 133) }
```

This example shows the color as background, it is applied via the CSS property "background".

To optimize and compress your CSS code, you can use our [online CSS compressor and optimizer](#) based on csstidy. If you want to create a linear or radial gradient as background or border, check our [CSS Gradient Generator](#).

Hey! You found this booklet interesting? Support Converting Colors with the new Membership Option!

The pro membership hides all ads, plus gives you double the colors in the color bucket, and more awesome pro features!

[Learn more, Memberships starting at \\$2.50/m!](#)

**Follow me
on Twitter!**

@ConvertingColor