

Converting Colors

CIELCh(58, 40.746, 72.051)

Have a look what the booklet for
CIELCh(58, 40.746, 72.051) contains.

CIELCh(58, 40.818, 72.314)	3
<i>Conversions</i>	4
<i>Details</i>	6
<i>Harmonies</i>	11
<i>Previews</i>	20
<i>Color Blindness Simulation</i>	23
<i>CSS Examples</i>	26

Color

CIELCh(58, 40.818, 72.314)

Conversions

Conversions Part 1

Format	Color
Hex	B38247
RGB	179, 130, 71
RGB Percent	70%, 51%, 28%
CMY	0.2985, 0.4906, 0.7220
CMYK	0.00, 0.27, 0.60, 0.30
HSL	33°, 43%, 49%
HSV	33°, 60%, 70%
XYZ	27.6664, 25.9610, 9.4974
YIQ	137.9250, 48.1430, -7.9610

Conversions

Conversions Part 2

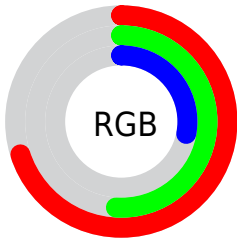
Format	Color
RYB	161, 179, 71
Decimal	11764295
CIELab	58.00, 12.40, 38.89
CIElCh	58, 40.818, 72.314
Yxy	25.9610, 0.4383, 0.4113
Android (android.graphics.Color)	4289954375 (0xFFB38247)
YUV	137.9250, -32.9940, 36.0228
Hunter-Lab	50.9519, 7.7578, 24.6148

Details

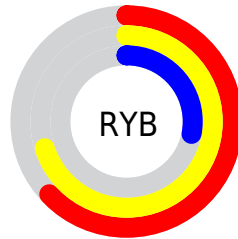
The CIELCh color **58, 40.818, 72.314** is a dark color, and the websafe version is hex **CC9966**. A complement of this color would be **49, 36.266, 272.756**, and the grayscale version is **58, 0.007, 296.813**.

A 20% lighter version of the original color is **78, 40.764, 72.639**, and **38, 40.927, 72.490** is the 20% darker color. If you saturate the color by 10%, you get **56, 47.992, 70.829**, and if you desaturate by 10%, it is **60, 33.562, 73.715**.

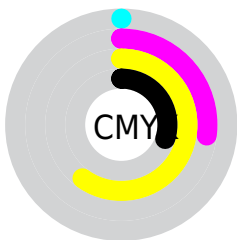
Distribution



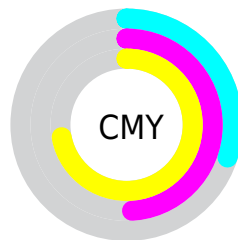
- Red (70%)
- Green (51%)
- Blue (28%)



- Red (63%)
- Yellow (70%)
- Blue (28%)



- Cyan (0%)
- Magenta (27%)
- Yellow (60%)
- Black (30%)



- Cyan (30%)
- Magenta (49%)
- Yellow (72%)

Brightness & Saturation Gradients

These gradients show how the CIELCh color 58, 40.818, 72.314 changes by changing the brightness by 10 percent. The first figure shows a shift by +10% for each color and the second figure -10%.

Similar to the brightness gradients but the following saturation gradients show a change of the CIELCh color 58, 40.818, 72.314 by changing the saturation by 10% instead.

■ 58, 40.818, 72.314

■ 58, 40.818, 72.314

■ 100, 40.818,
72.314

■ 48, 40.818, 72.314

■ 78, 40.818, 72.314

■ 38, 40.818, 72.314

■ 88, 40.818, 72.314

■ 28, 40.818, 72.314

■ 98, 40.818, 72.314

■ 18, 40.818, 72.314

■ 8, 40.818, 72.314

■ 0, 40.818, 72.314

■ 58, 40.818, 72.314

■ 58, 40.818, 72.314

■ 56, 47.992, 70.829

■ 60, 33.562, 73.715

■ 54, 54.688, 69.144

■ 63, 26.427, 75.068

■ 52, 60.225, 67.056

■ 65, 19.504, 76.391

■ 50, 64.230, 64.638

■ 68, 12.828, 77.685

■ 70, 6.402, 78.936

■ 73, 0.214, 78.799

■ 75, 5.755, 261.482

■ 78, 11.524,
262.616

■ 81, 17.115,
263.723

Harmonies

Complementary

The Complementary color scheme is a pair of colors which are on the opposite of each other on the color wheel.



58, 40.818, 72.314



49, 36.266, 272.756

Rectangle

The Rectangle color scheme consists of four colors that form a rectangle on the color wheel.



58, 40.818, 72.314



58, 40.818, 122.314



58, 40.818, 252.314



58, 40.818, 302.314

Sweetspot

The Sweet Spot groups the original color and five complimentary colors.



58, 40.818, 72.318



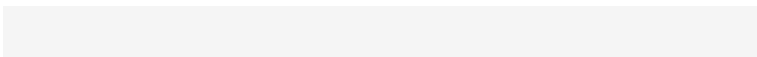
86, 13.954, 77.947



46, 49.333, 352.836



45, 9.830, 77.579



96, 0.011, 296.813



49, 0.007, 296.813

Same Dimension

The Same Dimension uses a secret algorithm to generate beautiful new colors.



58, 40.818, 72.318



70, 60.722, 70.375



71, 55.418, 106.282



36, 3.485, 79.062



43, 57.145, 65.124



5, 7.716, 68.136

Inverse Universe

The Inverse Universe completely reimagines the original color for something new.



49, 36.266, 272.756



58, 53.360, 277.243



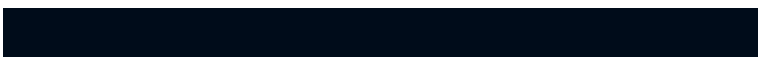
36, 66.122, 300.216



36, 3.434, 261.546



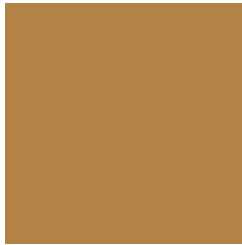
31, 53.213, 287.620



3, 9.164, 269.578

Previews

White Background



This preview shows how the CIELCh color 58, 40.818, 72.314 looks on a white background.

Color Contrast Check

Large Text (above 18pt) WCAG AA ✓ Pass

Any Text WCAG AA × Fail

Large Text (above 18pt) WCAG AAA × Fail

Any Text WCAG AAA × Fail

Black Background



This preview shows how the CIE LCh color 58, 40.818, 72.314 looks on a black background.

Color Contrast Check

Large Text (above 18pt) WCAG AA ✓ Pass

Any Text WCAG AA ✓ Pass

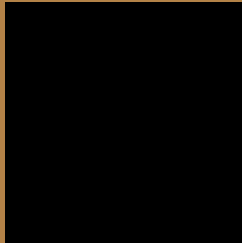
Large Text (above 18pt) WCAG AAA ✓ Pass

Any Text WCAG AAA × Fail

If you want to check with other color combinations, try the [Color Contrast Checker](#).

CIELCh 58, 40.818, 72.314

Background



This preview shows how black text looks on a background with the CIELCh color 58, 40.818, 72.314.



This preview shows how white text looks on a background with the CIELCh color 58, 40.818, 72.314.

Color Blindness Simulation

Color vision deficiency is a very complex topic, and I could not describe the different causes any better than Wikipedia does, so if you want to learn more, you should check out their [article about color blindness](#).

Dichromacy



Original Color

58, 40.818, 72.314

Protanopia

58, 37.041, 95.965

Deuteranopia

58, 39.923, 79.037



Tritanopia
58, 25.482, 11.003

Trichromacy



Original Color
58, 40.818, 72.314

Protanomaly
58, 37.354, 86.599

Deuteranomaly
58, 40.477, 76.478

Tritanomaly
58, 26.307, 41.540

Monochromacy



Original Color
58, 40.818, 72.314

Achromatopsia
57, 0.007, 296.813

Achromatomaly
57, 14.197, 76.277

CSS Examples

Text

The CSS property to change the color of the text to CIELCh 58, 40.818, 72.314 is called "color". The color property can be set on classes, ids or directly on the HTML element.

This example shows how text in the color `rgb(179, 130, 71)` looks like.

```
.text, #text, p{  
    color:rgb(179, 130, 71)  
}
```

If you want to add a text shadow in that color use the text-shadow property, you can generate a text shadow directly with our [CSS Text Shadow Generator](#).

Here you see how black text with a 4 pixel rgb(179, 130, 71) colored shadow looks like.

```
.shadow{ text-shadow: 4px 4px 2px rgb(179, 130, 71) }
```

Border

The CSS property to change the border of an element to CIELCh 58, 40.818, 72.314 is called "border". The border property can be set on classes, ids or directly on the HTML element.

This example shows the color as border, it can be applied via the CSS property "border" or "border-color".

```
.border, #border, table{ border:4px solid rgb(179, 130, 71) }
```

If only the border color should be changed use the property `border-color`.

```
.border{ border-color:rgb(179, 130, 71) }
```

If you want to add a box shadow in that color use:

Here you see how a box with a 4 pixel `rgb(179, 130, 71)` colored shadow looks like.

```
.boxshadow{ -moz-box-shadow:4px 4px 4px 4px rgb(179, 130, 71); -webkit-box-shadow:4px 4px 4px 4px rgb(179, 130, 71); box-shadow:4px 4px 4px 4px rgb(179, 130, 71) }
```

Background

The CSS property to change the background color of an element to CIELCh 58, 40.818, 72.314 is called "background". The background property can be set on classes, ids or directly on the HTML element.

```
.background, #background, body{  
background: rgb(179, 130, 71) }
```

If only the background color should be changed can be used:

```
.background{ background-color: rgb(179,  
130, 71) }
```

This example shows the color as background, it is applied via the CSS property "background".

To optimize and compress your CSS code, you can use our [online CSS compressor and optimizer](#) based on csstidy. If you want to create a linear or radial gradient as background or border, check our [CSS Gradient Generator](#).

Hey! You found this booklet interesting? Support Converting Colors with the new Membership Option!

The pro membership hides all ads, plus gives you double the colors in the color bucket, and more awesome pro features!

[Learn more, Memberships starting at \\$2.50/m!](#)

**Follow me
on Twitter!**

@ConvertingColor