

Converting Colors

CIELCh(58, 41.932, 65.646)

Have a look what the booklet for
CIELCh(58, 41.932, 65.646) contains.

CIELCh(58, 41.865, 65.684)	3
<i>Conversions</i>	4
<i>Details</i>	6
<i>Harmonies</i>	11
<i>Previews</i>	20
<i>Color Blindness Simulation</i>	23
<i>CSS Examples</i>	26

Color

CIELCh(58, 41.865, 65.684)

Conversions

Conversions Part 1

Format	Color
Hex	BA7F49
RGB	186, 127, 73
RGB Percent	73%, 50%, 29%
CMY	0.2721, 0.5033, 0.7150
CMYK	0.00, 0.32, 0.61, 0.27
HSL	29°, 45%, 51%
HSV	29°, 61%, 73%
XYZ	28.8960, 25.9610, 9.7363
YIQ	138.4850, 52.4980, -4.2860

Conversions

Conversions Part 2

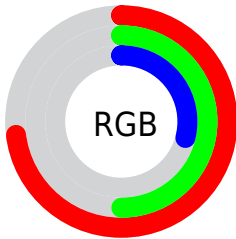
Format	Color
R_{YB}	186, 176, 73
Decimal	12222281
CIE _{Lab}	58.00, 17.24, 38.15
CIE _{LCh}	58, 41.865, 65.684
Yxy	25.9610, 0.4474, 0.4019
Android (android.graphics.Color)	4290412361 (0xFFBA7F49)
YUV	138.4850, -32.2841, 41.6707
Hunter-Lab	50.9519, 12.0656, 24.3367

Details

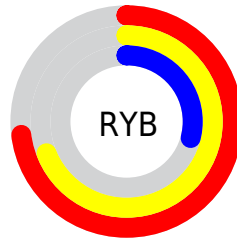
The CIELCh color **58, 41.865, 65.684** is a dark color, and the websafe version is hex **CC9966**. A complement of this color would be **53, 34.189, 265.581**, and the grayscale version is **58, 0.007, 296.813**.

A 20% lighter version of the original color is **78, 41.887, 65.845**, and **38, 41.665, 65.861** is the 20% darker color. If you saturate the color by 10%, you get **55, 49.570, 64.396**, and if you desaturate by 10%, it is **61, 34.220, 66.910**.

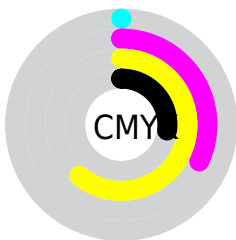
Distribution



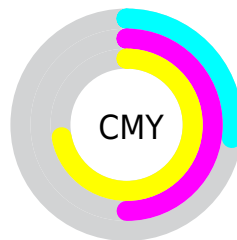
- Red (73%)
- Green (50%)
- Blue (29%)



- Red (73%)
- Yellow (69%)
- Blue (29%)



- Cyan (0%)
- Magenta (32%)
- Yellow (61%)
- Black (27%)




- Cyan (27%)
- Magenta (50%)
- Yellow (72%)


Brightness & Saturation Gradients

These gradients show how the CIELCh color 58, 41.865, 65.684 changes by changing the brightness by 10 percent. The first figure shows a shift by +10% for each color and the second figure -10%.

Similar to the brightness gradients but the following saturation gradients show a change of the CIELCh color 58, 41.865, 65.684 by changing the saturation by 10% instead.

 58, 41.865, 65.684

 58, 41.865, 65.684

 100, 41.865,
65.684

 48, 41.865, 65.684

 78, 41.865, 65.684

 38, 41.865, 65.684

 88, 41.865, 65.684

 28, 41.865, 65.684

 98, 41.865, 65.684

 18, 41.865, 65.684

 8, 41.865, 65.684

 0, 41.865, 65.684

 58, 41.865, 65.684

 58, 41.865, 65.684

 55, 49.570, 64.396

 61, 34.220, 66.910

 53, 56.940, 62.910

 63, 26.822, 68.113

51, 63.244, 60.980

66, 19.745, 69.311

49, 67.792, 58.805

69, 13.007, 70.504

72, 6.598, 71.671

75, 0.495, 72.168

78, 5.332, 254.128

81, 10.910,
255.218

84, 16.269,
256.296

Harmonies

Complementary

The Complementary color scheme is a pair of colors which are on the opposite of each other on the color wheel.



58, 41.865, 65.684



53, 34.189, 265.581

Rectangle

The Rectangle color scheme consists of four colors that form a rectangle on the color wheel.



58, 41.865, 65.684



58, 41.865, 115.684



58, 41.865, 245.684



58, 41.865, 295.684

Sweetspot

The Sweet Spot groups the original color and five complimentary colors.



58, 41.864, 65.688



89, 13.857, 70.804



48, 52.769, 348.597



47, 9.779, 70.458



98, 0.011, 296.813



51, 0.007, 296.813

Same Dimension

The Same Dimension uses a secret algorithm to generate beautiful new colors.



58, 41.864, 65.688



70, 63.650, 63.925



72, 55.910, 102.982



37, 3.404, 71.841



41, 59.307, 59.362



5, 8.735, 58.783

Inverse Universe

The Inverse Universe completely reimagines the original color for something new.



53, 34.189, 265.581



63, 50.147, 270.475



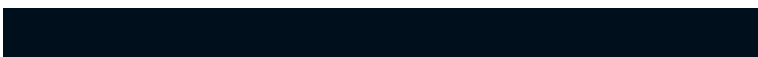
38, 66.378, 298.556



37, 3.321, 254.242



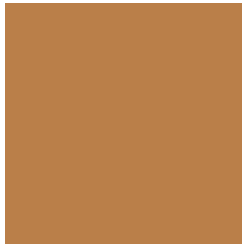
35, 47.157, 281.155



4, 10.006, 265.517

Previews

White Background



This preview shows how the CIELCh color 58, 41.865, 65.684 looks on a white background.

Color Contrast Check

Large Text (above 18pt) WCAG AA ✓ Pass

Any Text WCAG AA × Fail

Large Text (above 18pt) WCAG AAA × Fail

Any Text WCAG AAA × Fail

Black Background



This preview shows how the CIELCh color 58, 41.865, 65.684 looks on a black background.

Color Contrast Check

Large Text (above 18pt) WCAG AA ✓ Pass

Any Text WCAG AA ✓ Pass

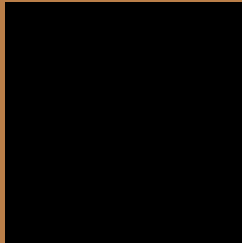
Large Text (above 18pt) WCAG AAA ✓ Pass

Any Text WCAG AAA × Fail

If you want to check with other color combinations, try the [Color Contrast Checker](#).

CIELCh 58, 41.865, 65.684

Background



This preview shows how black text looks on a background with the CIELCh color 58, 41.865, 65.684.



This preview shows how white text looks on a background with the CIELCh color 58, 41.865, 65.684.

Color Blindness Simulation

Color vision deficiency is a very complex topic, and I could not describe the different causes any better than Wikipedia does, so if you want to learn more, you should check out their [article about color blindness](#).

Dichromacy



Original Color

58, 41.865, 65.684

Protanopia

58, 35.503, 95.761

Deuteranopia

58, 39.447, 78.786



Tritanopia
58, 29.298, 13.048

Trichromacy



Original Color
58, 41.865, 65.684

Protanomaly
58, 36.447, 83.977

Deuteranomaly
58, 39.922, 73.932

Tritanomaly
58, 30.029, 36.283

Monochromacy



Original Color
58, 41.865, 65.684

Achromatopsia
57, 0.007, 296.813

Achromatomaly
57, 14.507, 70.922

CSS Examples

Text

The CSS property to change the color of the text to CIELCh 58, 41.865, 65.684 is called "color". The color property can be set on classes, ids or directly on the HTML element.

This example shows how text in the color `rgb(186, 127, 73)` looks like.

```
.text, #text, p{  
    color:rgb(186, 127, 73)  
}
```

If you want to add a text shadow in that color use the text-shadow property, you can generate a text shadow directly with our [CSS Text Shadow Generator](#).

Here you see how black text with a 4 pixel rgb(186, 127, 73) colored shadow looks like.

```
.shadow{ text-shadow: 4px 4px 2px rgb(186, 127, 73) }
```

Border

The CSS property to change the border of an element to CIELCh 58, 41.865, 65.684 is called "border". The border property can be set on classes, ids or directly on the HTML element.

This example shows the color as border, it can be applied via the CSS property "border" or "border-color".

```
.border, #border, table{ border:4px solid rgb(186, 127, 73) }
```

If only the border color should be changed use the property border-color.

```
.border{ border-color:rgb(186, 127, 73) }
```

If you want to add a box shadow in that color use:

Here you see how a box with a 4 pixel rgb(186, 127, 73) colored shadow looks like.

```
.boxshadow{ -moz-box-shadow:4px 4px 4px  
4px rgb(186, 127, 73); -webkit-box-  
shadow:4px 4px 4px 4px rgb(186, 127, 73);  
box-shadow:4px 4px 4px 4px rgb(186, 127,  
73) }
```

Background

The CSS property to change the background color of an element to CIELCh 58, 41.865, 65.684 is called "background". The background property can be set on classes, ids or directly on the HTML element.

```
.background, #background, body{  
background: rgb(186, 127, 73) }
```

If only the background color should be changed can be used:

```
.background{ background-color: rgb(186,  
127, 73) }
```

This example shows the color as background, it is applied via the CSS property "background".

To optimize and compress your CSS code, you can use our [online CSS compressor and optimizer](#) based on csstidy. If you want to create a linear or radial gradient as background or border, check our [CSS Gradient Generator](#).

Hey! You found this booklet interesting? Support Converting Colors with the new Membership Option!

The pro membership hides all ads, plus gives you double the colors in the color bucket, and more awesome pro features!

[Learn more, Memberships starting at \\$2.50/m!](#)

**Follow me
on Twitter!**

@ConvertingColor