

Converting Colors

CIELCh(58, 43.164, 62.528)

Have a look what the booklet for
CIELCh(58, 43.164, 62.528) contains.

CIELCh(58, 42.849, 62.740)	3
<i>Conversions</i>	4
<i>Details</i>	6
<i>Harmonies</i>	11
<i>Previews</i>	20
<i>Color Blindness Simulation</i>	23
<i>CSS Examples</i>	26

Color

CIELCh(58, 42.849, 62.740)

Conversions

Conversions Part 1

Format	Color
Hex	BD7D49
RGB	189, 125, 73
RGB Percent	74%, 49%, 29%
CMY	0.2589, 0.5098, 0.7138
CMYK	0.00, 0.34, 0.61, 0.26
HSL	27°, 47%, 51%
HSV	27°, 61%, 74%
XYZ	29.5160, 25.9610, 9.7563
YIQ	138.2080, 54.8360, -2.6040

Conversions

Conversions Part 2

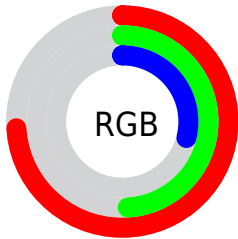
Format	Color
RYB	189, 167, 73
Decimal	12418377
CIELab	58.00, 19.63, 38.09
CIElCh	58, 42.849, 62.740
Yxy	25.9610, 0.4525, 0.3980
Android (android.graphics.Color)	4290608457 (0xFFBD7D49)
YUV	138.2080, -32.1475, 44.5446
Hunter-Lab	50.9519, 14.2375, 24.3135

Details

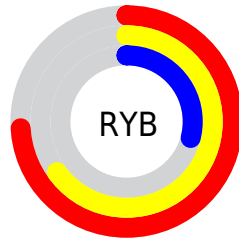
The CIELCh color **58, 42.849, 62.740** is a dark color, and the websafe version is hex **996633**. A complement of this color would be **55, 33.615, 262.178**, and the grayscale version is **58, 0.007, 296.813**.

A 20% lighter version of the original color is **78, 42.744, 63.022**, and **38, 42.836, 62.789** is the 20% darker color. If you saturate the color by 10%, you get **55, 50.828, 61.582**, and if you desaturate by 10%, it is **61, 34.980, 63.849**.

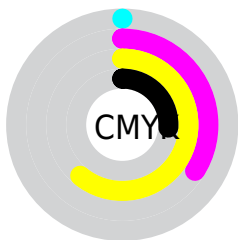
Distribution



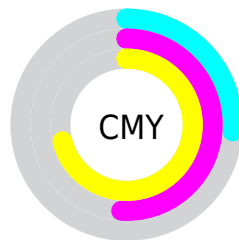
- Red (74%)
- Green (49%)
- Blue (29%)



- Red (74%)
- Yellow (65%)
- Blue (29%)



- Cyan (0%)
- Magenta (34%)
- Yellow (61%)
- Black (26%)



- Cyan (26%)
- Magenta (51%)
- Yellow (71%)

Brightness & Saturation Gradients

These gradients show how the CIELCh color 58, 42.849, 62.740 changes by changing the brightness by 10 percent. The first figure shows a shift by +10% for each color and the second figure -10%.

Similar to the brightness gradients but the following saturation gradients show a change of the CIELCh color 58, 42.849, 62.740 by changing the saturation by 10% instead.

■ 58, 42.849, 62.740

■ 58, 42.849, 62.740

■ 100, 42.849,
62.740

■ 48, 42.849, 62.740

■ 78, 42.849, 62.740

■ 38, 42.849, 62.740

■ 88, 42.849, 62.740

■ 28, 42.849, 62.740

■ 98, 42.849, 62.740

■ 18, 42.849, 62.740

■ 8, 42.849, 62.740

■ 0, 42.849, 62.740

■ 58, 42.849, 62.740

■ 58, 42.849, 62.740

■ 55, 50.828, 61.582

■ 61, 34.980, 63.849

■ 53, 58.511, 60.230

■ 64, 27.410, 64.949

50, 65.126, 58.412

67, 20.207, 66.061

49, 69.703, 56.472

70, 13.385, 67.179

73, 6.930, 68.285

76, 0.812, 68.987

79, 5.000, 250.660

83, 10.539,
251.709

86, 15.838,
252.757

Harmonies

Complementary

The Complementary color scheme is a pair of colors which are on the opposite of each other on the color wheel.



58, 42.849, 62.740



55, 33.615, 262.178

Rectangle

The Rectangle color scheme consists of four colors that form a rectangle on the color wheel.



58, 42.849, 62.740



58, 42.849, 112.740



58, 42.849, 242.740



58, 42.849, 292.740

Sweetspot

The Sweet Spot groups the original color and five complimentary colors.



58, 42.848, 62.744



89, 13.787, 67.524



49, 54.860, 346.639



46, 9.655, 67.199



98, 0.011, 296.813



51, 0.007, 296.813

Same Dimension

The Same Dimension uses a secret algorithm to generate beautiful new colors.



58, 42.848, 62.744



69, 65.363, 61.101



73, 55.620, 101.197



38, 3.428, 68.502



41, 60.862, 57.023



5, 10.031, 53.984

Inverse Universe

The Inverse Universe completely reimagines the original color for something new.



55, 33.615, 262.178



65, 48.856, 267.323



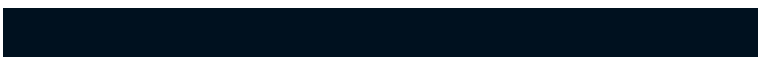
39, 65.503, 297.481



38, 3.329, 250.826



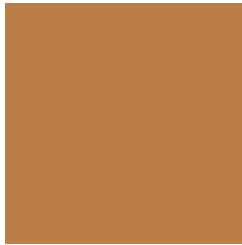
37, 45.001, 277.885



4, 10.970, 263.806

Previews

White Background



This preview shows how the CIELCh color 58, 42.849, 62.740 looks on a white background.

Color Contrast Check

Large Text (above 18pt) WCAG AA ✓ Pass

Any Text WCAG AA × Fail

Large Text (above 18pt) WCAG AAA × Fail

Any Text WCAG AAA × Fail

Black Background



This preview shows how the CIE LCh color 58, 42.849, 62.740 looks on a black background.

Color Contrast Check

Large Text (above 18pt) WCAG AA ✓ Pass

Any Text WCAG AA ✓ Pass

Large Text (above 18pt) WCAG AAA ✓ Pass

Any Text WCAG AAA × Fail

If you want to check with other color combinations, try the [Color Contrast Checker](#).

CIELCh 58, 42.849, 62.740

Background



This preview shows how black text looks on a background with the CIELCh color 58, 42.849, 62.740.



This preview shows how white text looks on a background with the CIELCh color 58, 42.849, 62.740.

Color Blindness Simulation

Color vision deficiency is a very complex topic, and I could not describe the different causes any better than Wikipedia does, so if you want to learn more, you should check out their [article about color blindness](#).

Dichromacy



Original Color

58, 42.849, 62.740

Protanopia

58, 34.987, 95.685

Deuteranopia

58, 39.447, 78.786



Tritanopia
58, 31.004, 14.867

Trichromacy



Original Color
58, 42.849, 62.740

Protanomaly
58, 36.349, 82.433

Deuteranomaly
58, 40.074, 72.512

Tritanomaly
58, 32.480, 36.439

Monochromacy



Original Color
58, 42.849, 62.740

Achromatopsia
57, 0.007, 296.813

Achromatomaly
57, 14.947, 65.840

CSS Examples

Text

The CSS property to change the color of the text to CIELCh 58, 42.849, 62.740 is called "color". The color property can be set on classes, ids or directly on the HTML element.

This example shows how text in the color `rgb(189, 125, 73)` looks like.

```
.text, #text, p{  
    color:rgb(189, 125, 73)  
}
```

If you want to add a text shadow in that color use the text-shadow property, you can generate a text shadow directly with our [CSS Text Shadow Generator](#).

Here you see how black text with a 4 pixel rgb(189, 125, 73) colored shadow looks like.

```
.shadow{ text-shadow: 4px 4px 2px rgb(189, 125, 73) }
```

Border

The CSS property to change the border of an element to CIELCh 58, 42.849, 62.740 is called "border". The border property can be set on classes, ids or directly on the HTML element.

This example shows the color as border, it can be applied via the CSS property "border" or "border-color".

```
.border, #border, table{ border:4px solid rgb(189, 125, 73) }
```

If only the border color should be changed use the property `border-color`.

```
.border{ border-color:rgb(189, 125, 73) }
```

If you want to add a box shadow in that color use:

Here you see how a box with a 4 pixel `rgb(189, 125, 73)` colored shadow looks like.

```
.boxshadow{ -moz-box-shadow:4px 4px 4px  
4px rgb(189, 125, 73); -webkit-box-  
shadow:4px 4px 4px 4px rgb(189, 125, 73);  
box-shadow:4px 4px 4px 4px rgb(189, 125,  
73) }
```

Background

The CSS property to change the background color of an element to CIELCh 58, 42.849, 62.740 is called "background". The background property can be set on classes, ids or directly on the HTML element.

```
.background, #background, body{  
background: rgb(189, 125, 73) }
```

If only the background color should be changed can be used:

```
.background{ background-color: rgb(189,  
125, 73) }
```

This example shows the color as background, it is applied via the CSS property "background".

To optimize and compress your CSS code, you can use our [online CSS compressor and optimizer](#) based on csstidy. If you want to create a linear or radial gradient as background or border, check our [CSS Gradient Generator](#).

Hey! You found this booklet interesting? Support Converting Colors with the new Membership Option!

The pro membership hides all ads, plus gives you double the colors in the color bucket, and more awesome pro features!

[Learn more, Memberships starting at \\$2.50/m!](#)

**Follow me
on Twitter!**

@ConvertingColor