

Converting Colors

CIELCh(58, 57.273, 2.327)

Have a look what the booklet for
CIELCh(58, 57.273, 2.327) contains.

CIELCh(58, 56.950, 2.094)	3
<i>Conversions</i>	4
<i>Details</i>	6
<i>Harmonies</i>	11
<i>Previews</i>	20
<i>Color Blindness Simulation</i>	23
<i>CSS Examples</i>	26

Color

CIELCh(58, 56.950, 2.094)

Conversions

Conversions Part 1

Format	Color
Hex	E45C8A
RGB	228, 92, 138
RGB Percent	89%, 36%, 54%
CMY	0.1061, 0.6394, 0.4590
CMYK	0.00, 0.60, 0.39, 0.11
HSL	340°, 72%, 63%
HSV	340°, 60%, 89%
XYZ	40.3801, 25.9610, 26.9064
YIQ	137.9080, 66.2900, 43.1380

Conversions

Conversions Part 2

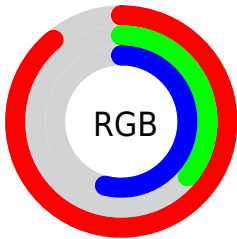
Format	Color
R _Y B	228, 92, 138
Decimal	14965898
CIE Lab	58.00, 56.91, 2.08
CIE LCh	58, 56.950, 2.094
Yxy	25.9610, 0.4330, 0.2784
Android (android.graphics.Color)	4293155978 (0xFFE45C8A)
YUV	137.9080, 0.0454, 79.0107
Hunter-Lab	50.9519, 52.2978, 4.3568

Details

The CIELCh color **58, 56.950, 2.094** is a light color, and the websafe version is hex **FF6699**. The color can be described as light muted rose. A complement of this color would be **82, 49.174, 166.452**, and the grayscale version is **57, 0.007, 296.813**.

A 20% lighter version of the original color is **74, 45.542, 354.142**, and **38, 56.862, 2.198** is the 20% darker color. If you saturate the color by 10%, you get **54, 64.852, 4.900**, and if you desaturate by 10%, it is **62, 47.937, 359.871**.

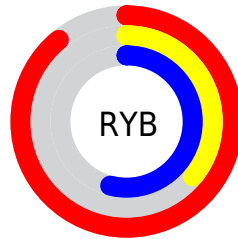
Distribution



Red (89%)

Green (36%)

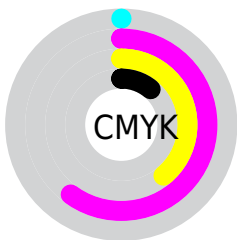
Blue (54%)



Red (89%)

Yellow (36%)

Blue (54%)

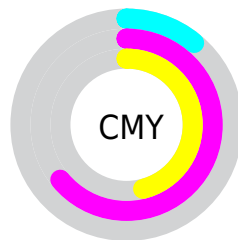


Cyan (0%)

Magenta (60%)

Yellow (39%)

Black (11%)



Cyan (11%)

Magenta (64%)

Yellow (46%)

Brightness & Saturation Gradients

These gradients show how the CIELCh color 58, 56.950, 2.094 changes by changing the brightness by 10 percent. The first figure shows a shift by +10% for each color and the second figure -10%.

Similar to the brightness gradients but the following saturation gradients show a change of the CIELCh color 58, 56.950, 2.094 by changing the saturation by 10% instead.

 58, 56.950, 2.094

 58, 56.950, 2.094

 100, 56.950, 2.094

 48, 56.950, 2.094

 78, 56.950, 2.094

 38, 56.950, 2.094

 88, 56.950, 2.094

 28, 56.950, 2.094

 98, 56.950, 2.094

 18, 56.950, 2.094


 8, 56.950, 2.094

 0, 56.950, 2.094

 58, 56.950, 2.094

 58, 56.950, 2.094

 54, 64.852, 4.900

 62, 47.937,
359.871

 51, 71.238, 8.464

49, 75.941, 12.941

68, 38.291,
358.073

48, 79.404, 18.243

73, 28.407,
356.587

48, 79.526, 18.423

79, 18.572,
355.327

85, 8.968, 354.222

91, 0.303, 175.027

97, 9.195, 172.558

98, 9.205, 198.896

Harmonies

Complementary

The Complementary color scheme is a pair of colors which are on the opposite of each other on the color wheel.



58, 56.950, 2.094



82, 49.174, 166.452

Rectangle

The Rectangle color scheme consists of four colors that form a rectangle on the color wheel.



58, 56.950, 2.094



58, 56.950, 52.094



58, 56.950, 182.094



58, 56.950, 232.094

Sweetspot

The Sweet Spot groups the original color and five complimentary colors.



58, 56.947, 2.096



88, 18.577, 355.148



55, 79.683, 316.569



45, 12.969, 355.490



0, 0.000, 0.000



53, 0.007, 296.813

Same Dimension

The Same Dimension uses a secret algorithm to generate beautiful new colors.



58, 56.947, 2.096



59, 72.710, 5.809



61, 53.944, 36.759



45, 5.300, 354.200



38, 65.969, 17.430



7, 26.715, 6.277

Inverse Universe

The Inverse Universe completely reimagines the original color for something new.



58, 56.947, 2.096



59, 72.710, 5.809



78, 33.296, 216.700



45, 5.300, 354.200



38, 65.969, 17.430



7, 26.715, 6.277

Previews

White Background



This preview shows how the CIELCh color 58, 56.950, 2.094 looks on a white background.

Color Contrast Check

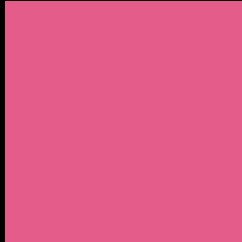
Large Text (above 18pt) WCAG AA ✓ Pass

Any Text WCAG AA ✗ Fail

Large Text (above 18pt) WCAG AAA ✗ Fail

Any Text WCAG AAA ✗ Fail

Black Background



This preview shows how the CIELCh color 58, 56.950, 2.094 looks on a black background.

Color Contrast Check

Large Text (above 18pt) WCAG AA ✓ Pass

Any Text WCAG AA ✓ Pass

Large Text (above 18pt) WCAG AAA ✓ Pass

Any Text WCAG AAA × Fail

If you want to check with other color combinations, try the [Color Contrast Checker](#).

CIELCh 58, 56.950, 2.094

Background



This preview shows how black text looks on a background with the CIELCh color 58, 56.950, 2.094.



This preview shows how white text looks on a background with the CIELCh color 58, 56.950, 2.094.

Color Blindness Simulation

Color vision deficiency is a very complex topic, and I could not describe the different causes any better than Wikipedia does, so if you want to learn more, you should check out their [article about color blindness](#).

Dichromacy



Original Color

58, 56.950, 2.094

Protanopia

58, 15.407, 285.281

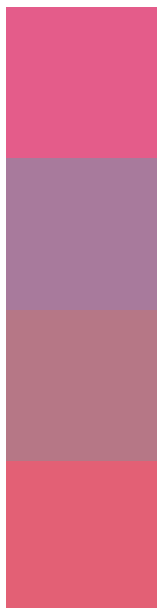
Deuteranopia

58, 8.853, 34.946



Tritanopia
58, 54.381, 23.242

Trichromacy



Original Color
58, 56.950, 2.094

Protanomaly
57, 26.071, 334.589

Deuteranomaly
57, 26.842, 4.396

Tritanomaly
58, 54.642, 15.213

Monochromacy



Original Color
58, 56.950, 2.094

Achromatopsia
57, 0.007, 296.813

Achromatomaly
56, 22.160, 356.335

CSS Examples

Text

The CSS property to change the color of the text to CIELCh 58, 56.950, 2.094 is called "color". The color property can be set on classes, ids or directly on the HTML element.

This example shows how text in the color `rgb(228, 92, 138)` looks like.

```
.text, #text, p{  
    color:rgb(228, 92, 138)  
}
```

If you want to add a text shadow in that color use the text-shadow property, you can generate a text shadow directly with our [CSS Text Shadow Generator](#).

Here you see how black text with a 4 pixel rgb(228, 92, 138) colored shadow looks like.

```
.shadow{ text-shadow: 4px 4px 2px rgb(228, 92, 138) }
```

Border

The CSS property to change the border of an element to CIELCh 58, 56.950, 2.094 is called "border". The border property can be set on classes, ids or directly on the HTML element.

This example shows the color as border, it can be applied via the CSS property "border" or "border-color".

```
.border, #border, table{ border:4px solid rgb(228, 92, 138) }
```

If only the border color should be changed use the property `border-color`.

```
.border{ border-color:rgb(228, 92, 138) }
```

If you want to add a box shadow in that color use:

Here you see how a box with a 4 pixel `rgb(228, 92, 138)` colored shadow looks like.

```
.boxshadow{ -moz-box-shadow:4px 4px 4px  
4px rgb(228, 92, 138); -webkit-box-  
shadow:4px 4px 4px 4px rgb(228, 92, 138);  
box-shadow:4px 4px 4px 4px rgb(228, 92,  
138) }
```

Background

The CSS property to change the background color of an element to CIELCh 58, 56.950, 2.094 is called "background". The background property can be set on classes, ids or directly on the HTML element.

```
.background, #background, body{  
background: rgb(228, 92, 138) }
```

If only the background color should be changed can be used:

```
.background{ background-color: rgb(228, 92,  
138) }
```

This example shows the color as background, it is applied via the CSS property "background".

To optimize and compress your CSS code, you can use our [online CSS compressor and optimizer](#) based on csstidy. If you want to create a linear or radial gradient as background or border, check our [CSS Gradient Generator](#).

Hey! You found this booklet interesting? Support Converting Colors with the new Membership Option!

The pro membership hides all ads, plus gives you double the colors in the color bucket, and more awesome pro features!

[Learn more, Memberships starting at \\$2.50/m!](#)

**Follow me
on Twitter!**

@ConvertingColor