

Converting Colors

CIELCh(58, 59.502, 5.161)

Have a look what the booklet for
CIELCh(58, 59.502, 5.161) contains.

CIELCh(58, 59.575, 4.696)	3
<i>Conversions</i>	4
<i>Details</i>	6
<i>Harmonies</i>	11
<i>Previews</i>	20
<i>Color Blindness Simulation</i>	23
<i>CSS Examples</i>	26

Color

CIELCh(58, 59.575, 4.696)

Conversions

Conversions Part 1

Format	Color
Hex	E85885
RGB	232, 88, 133
RGB Percent	91%, 35%, 52%
CMY	0.0887, 0.6535, 0.4772
CMYK	0.00, 0.62, 0.43, 0.09
HSL	341°, 76%, 63%
HSV	341°, 62%, 91%
XYZ	41.1791, 25.9610, 25.1477
YIQ	136.1860, 71.3790, 44.5230

Conversions

Conversions Part 2

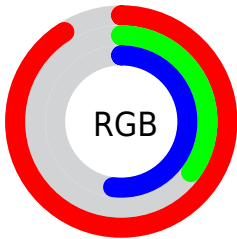
Format	Color
R_{YB}	232, 88, 133
Decimal	15227013
CIE _{Lab}	58.00, 59.38, 4.88
CIE _{LCh}	58, 59.575, 4.696
Yxy	25.9610, 0.4462, 0.2813
Android (android.graphics.Color)	4293417093 (0xFFE85885)
YUV	136.1860, -1.5707, 84.0289
Hunter-Lab	50.9519, 55.0970, 6.4034

Details

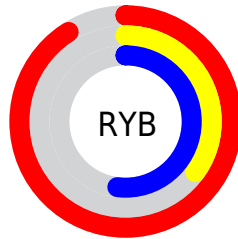
The CIELCh color **58, 59.575, 4.696** is a light color, and the websafe version is hex **FF6699**. The color can be described as light muted rose. A complement of this color would be **84, 50.211, 167.893**, and the grayscale version is **57, 0.007, 296.813**.

A 20% lighter version of the original color is **73, 46.766, 355.982**, and **38, 59.670, 4.663** is the 20% darker color. If you saturate the color by 10%, you get **54, 67.433, 7.778**, and if you desaturate by 10%, it is **62, 50.555, 2.266**.

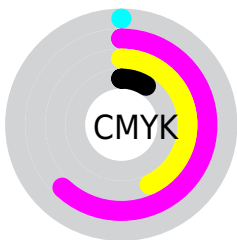
Distribution



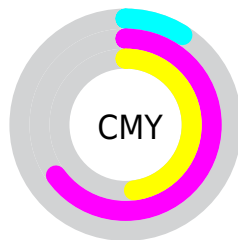
- Red (91%)
- Green (35%)
- Blue (52%)



- Red (91%)
- Yellow (35%)
- Blue (52%)



- Cyan (0%)
- Magenta (62%)
- Yellow (43%)
- Black (9%)



- Cyan (9%)
- Magenta (65%)
- Yellow (48%)

Brightness & Saturation Gradients

These gradients show how the CIELCh color 58, 59.575, 4.696 changes by changing the brightness by 10 percent. The first figure shows a shift by +10% for each color and the second figure -10%.

Similar to the brightness gradients but the following saturation gradients show a change of the CIELCh color 58, 59.575, 4.696 by changing the saturation by 10% instead.

 58, 59.575, 4.696

 58, 59.575, 4.696

 100, 59.575, 4.696

 48, 59.575, 4.696

 78, 59.575, 4.696

 38, 59.575, 4.696

 88, 59.575, 4.696

 28, 59.575, 4.696

 98, 59.575, 4.696

 18, 59.575, 4.696

 8, 59.575, 4.696

 0, 59.575, 4.696

 58, 59.575, 4.696

 58, 59.575, 4.696

 54, 67.433, 7.778

 62, 50.555, 2.266

 52, 73.775, 11.684

 67, 40.848, 0.318

50, 78.542, 16.528

73, 30.863,
358.725

49, 81.658, 20.924

79, 20.911,
357.390

85, 11.189,
356.237

91, 1.812, 355.012

97, 7.171, 174.515

98, 7.726, 199.002

Harmonies

Complementary

The Complementary color scheme is a pair of colors which are on the opposite of each other on the color wheel.



58, 59.575, 4.696



84, 50.211, 167.893

Rectangle

The Rectangle color scheme consists of four colors that form a rectangle on the color wheel.



58, 59.575, 4.696



58, 59.575, 54.696



58, 59.575, 184.696



58, 59.575, 234.696

Sweetspot

The Sweet Spot groups the original color and five complimentary colors.



58, 59.572, 4.698



87, 19.398, 357.043



56, 83.884, 317.642



45, 13.417, 357.390



0, 0.000, 0.000



53, 0.007, 296.813

Same Dimension

The Same Dimension uses a secret algorithm to generate beautiful new colors.



58, 59.572, 4.698



59, 74.132, 8.635



62, 56.237, 39.445



46, 5.323, 355.967



38, 67.395, 19.914



7, 27.800, 8.650

Inverse Universe

The Inverse Universe completely reimagines the original color for something new.



58, 59.572, 4.698



59, 74.132, 8.635



77, 34.099, 222.217



46, 5.323, 355.967



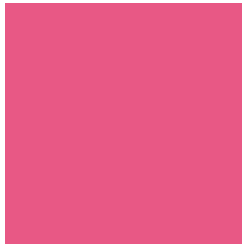
38, 67.395, 19.914



7, 27.800, 8.650

Previews

White Background



This preview shows how the CIELCh color 58, 59.575, 4.696 looks on a white background.

Color Contrast Check

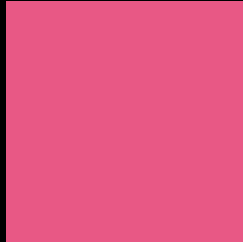
Large Text (above 18pt) WCAG AA ✓ Pass

Any Text WCAG AA ✗ Fail

Large Text (above 18pt) WCAG AAA ✗ Fail

Any Text WCAG AAA ✗ Fail

Black Background



This preview shows how the CIELCh color 58, 59.575, 4.696 looks on a black background.

Color Contrast Check

Large Text (above 18pt) WCAG AA ✓ Pass

Any Text WCAG AA ✓ Pass

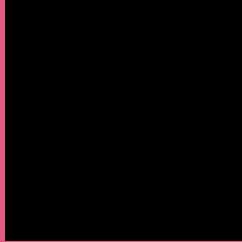
Large Text (above 18pt) WCAG AAA ✓ Pass

Any Text WCAG AAA × Fail

If you want to check with other color combinations, try the [Color Contrast Checker](#).

CIELCh 58, 59.575, 4.696

Background



This preview shows how black text looks on a background with the CIELCh color 58, 59.575, 4.696.



This preview shows how white text looks on a background with the CIELCh color 58, 59.575, 4.696.

Color Blindness Simulation

Color vision deficiency is a very complex topic, and I could not describe the different causes any better than Wikipedia does, so if you want to learn more, you should check out their [article about color blindness](#).

Dichromacy



Original Color

58, 59.575, 4.696

Protanopia

58, 13.686, 285.685

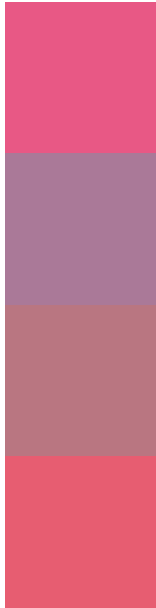
Deuteranopia

58, 10.819, 48.140



Tritanopia
58, 57.931, 24.121

Trichromacy



Original Color
58, 59.575, 4.696

Protanomaly
57, 25.765, 339.363

Deuteranomaly
57, 28.193, 10.218

Tritanomaly
58, 57.568, 16.976

Monochromacy



Original Color
58, 59.575, 4.696

Achromatopsia
57, 0.007, 296.813

Achromatomaly
56, 23.317, 357.873

CSS Examples

Text

The CSS property to change the color of the text to CIELCh 58, 59.575, 4.696 is called "color". The color property can be set on classes, ids or directly on the HTML element.

This example shows how text in the color `rgb(232, 88, 133)` looks like.

```
.text, #text, p{  
    color:rgb(232, 88, 133)  
}
```

If you want to add a text shadow in that color use the text-shadow property, you can generate a text shadow directly with our [CSS Text Shadow Generator](#).

Here you see how black text with a 4 pixel rgb(232, 88, 133) colored shadow looks like.

```
.shadow{ text-shadow: 4px 4px 2px rgb(232, 88, 133) }
```

Border

The CSS property to change the border of an element to CIELCh 58, 59.575, 4.696 is called "border". The border property can be set on classes, ids or directly on the HTML element.

This example shows the color as border, it can be applied via the CSS property "border" or "border-color".

```
.border, #border, table{ border:4px solid rgb(232, 88, 133) }
```

If only the border color should be changed use the property `border-color`.

```
.border{ border-color:rgb(232, 88, 133) }
```

If you want to add a box shadow in that color use:

Here you see how a box with a 4 pixel `rgb(232, 88, 133)` colored shadow looks like.

```
.boxshadow{ -moz-box-shadow:4px 4px 4px 4px rgb(232, 88, 133); -webkit-box-shadow:4px 4px 4px 4px rgb(232, 88, 133); box-shadow:4px 4px 4px 4px rgb(232, 88, 133) }
```

Background

The CSS property to change the background color of an element to CIELCh 58, 59.575, 4.696 is called "background". The background property can be set on classes, ids or directly on the HTML element.

```
.background, #background, body{  
background: rgb(232, 88, 133) }
```

If only the background color should be changed can be used:

```
.background{ background-color: rgb(232, 88,  
133) }
```

This example shows the color as background, it is applied via the CSS property "background".

To optimize and compress your CSS code, you can use our [online CSS compressor and optimizer](#) based on csstidy. If you want to create a linear or radial gradient as background or border, check our [CSS Gradient Generator](#).

Hey! You found this booklet interesting? Support Converting Colors with the new Membership Option!

The pro membership hides all ads, plus gives you double the colors in the color bucket, and more awesome pro features!

[Learn more, Memberships starting at \\$2.50/m!](#)

**Follow me
on Twitter!**

@ConvertingColor