

Converting Colors

CIELCh(58, 62.244, 15.625)

Have a look what the booklet for
CIELCh(58, 62.244, 15.625) contains.

CIELCh(58, 62.283, 15.606)	3
<i>Conversions</i>	4
<i>Details</i>	6
<i>Harmonies</i>	11
<i>Previews</i>	20
<i>Color Blindness Simulation</i>	23
<i>CSS Examples</i>	26

Color

CIELCh(58, 62.283, 15.606)

Conversions

Conversions Part 1

Format	Color
Hex	ED5671
RGB	237, 86, 113
RGB Percent	93%, 34%, 44%
CMY	0.0693, 0.6615, 0.5558
CMYK	0.00, 0.64, 0.52, 0.07
HSL	349°, 81%, 63%
HSV	349°, 64%, 93%
XYZ	41.3792, 25.9610, 18.5290
YIQ	134.2270, 81.3290, 40.4090

Conversions

Conversions Part 2

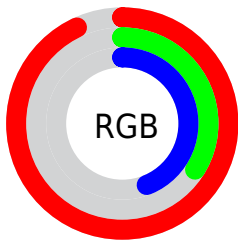
Format	Color
R_{YB}	237, 86, 113
Decimal	15554161
CIE _{Lab}	58.00, 59.99, 16.76
CIE _{LCh}	58, 62.283, 15.606
Yxy	25.9610, 0.4819, 0.3023
Android (android.graphics.Color)	4293744241 (0xFFED5671)
YUV	134.2270, -10.4649, 90.1319
Hunter-Lab	50.9519, 55.7981, 14.1052

Details

The CIELCh color **58, 62.283, 15.606** is a dark color, and the websafe version is hex **CC3366**. The color can be described as middle muted rose. A complement of this color would be **86, 46.104, 178.403**, and the grayscale version is **56, 0.007, 296.813**.

A 20% lighter version of the original color is **72, 45.134, 9.301**, and **38, 62.119, 15.203** is the 20% darker color. If you saturate the color by 10%, you get **54, 71.321, 19.170**, and if you desaturate by 10%, it is **62, 52.451, 12.793**.

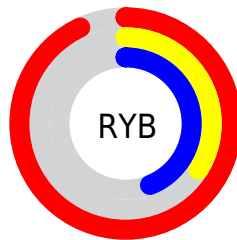
Distribution



Red (93%)

Green (34%)

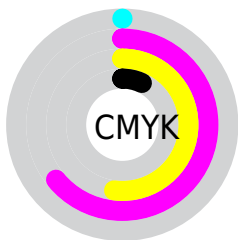
Blue (44%)



Red (93%)

Yellow (34%)

Blue (44%)

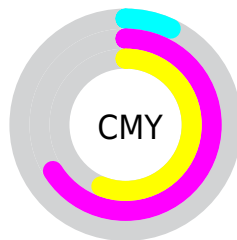


Cyan (0%)

Magenta (64%)

Yellow (52%)

Black (7%)



Cyan (7%)

Magenta (66%)

Yellow (56%)


Brightness & Saturation Gradients

These gradients show how the CIELCh color 58, 62.283, 15.606 changes by changing the brightness by 10 percent. The first figure shows a shift by +10% for each color and the second figure -10%.

Similar to the brightness gradients but the following saturation gradients show a change of the CIELCh color 58, 62.283, 15.606 by changing the saturation by 10% instead.

 58, 62.283, 15.606

 58, 62.283, 15.606

 100, 62.283,
15.606

 48, 62.283, 15.606

 78, 62.283, 15.606

 38, 62.283, 15.606

 88, 62.283, 15.606

 28, 62.283, 15.606

 98, 62.283, 15.606

 18, 62.283, 15.606

 8, 62.283, 15.606

 0, 62.283, 15.606

 58, 62.283, 15.606

 58, 62.283, 15.606

 54, 71.321, 19.170

 62, 52.451, 12.793

 52, 79.292, 23.563

 68, 42.228, 10.573

50, 86.128, 28.657

73, 31.972, 8.804

50, 90.051, 31.927

79, 21.952, 7.368

85, 12.334, 6.171

92, 3.198, 5.047

98, 5.431, 184.495

99, 6.069, 199.130

Harmonies

Complementary

The Complementary color scheme is a pair of colors which are on the opposite of each other on the color wheel.



58, 62.283, 15.606



86, 46.104, 178.403

Rectangle

The Rectangle color scheme consists of four colors that form a rectangle on the color wheel.



58, 62.283, 15.606



58, 62.283, 65.606



58, 62.283, 195.606



58, 62.283, 245.606

Sweetspot

The Sweet Spot groups the original color and five complimentary colors.



58, 62.280, 15.608



87, 18.489, 6.798



58, 87.869, 321.806



45, 12.820, 7.152



0, 0.000, 0.000



53, 0.007, 296.813

Same Dimension

The Same Dimension uses a secret algorithm to generate beautiful new colors.



58, 62.280, 15.608



58, 77.664, 20.258



66, 55.340, 50.279



47, 5.123, 5.719



38, 73.632, 30.997



8, 29.067, 16.496

Inverse Universe

The Inverse Universe completely reimagines the original color for something new.



58, 62.280, 15.608



58, 77.664, 20.258



73, 36.211, 244.354



47, 5.123, 5.719



38, 73.632, 30.997



8, 29.067, 16.496

Previews

White Background



This preview shows how the CIELCh color 58, 62.283, 15.606 looks on a white background.

Color Contrast Check

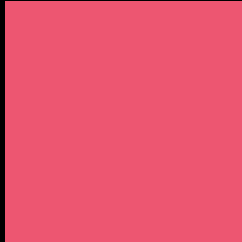
Large Text (above 18pt) WCAG AA ✓ Pass

Any Text WCAG AA ✗ Fail

Large Text (above 18pt) WCAG AAA ✗ Fail

Any Text WCAG AAA ✗ Fail

Black Background



This preview shows how the CIELCh color 58, 62.283, 15.606 looks on a black background.

Color Contrast Check

Large Text (above 18pt) WCAG AA ✓ Pass

Any Text WCAG AA ✓ Pass

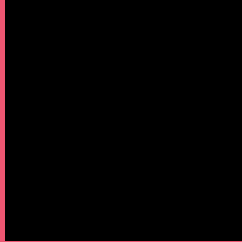
Large Text (above 18pt) WCAG AAA ✓ Pass

Any Text WCAG AAA × Fail

If you want to check with other color combinations, try the [Color Contrast Checker](#).

CIELCh 58, 62.283, 15.606

Background



This preview shows how black text looks on a background with the CIELCh color 58, 62.283, 15.606.



This preview shows how white text looks on a background with the CIELCh color 58, 62.283, 15.606.

Color Blindness Simulation

Color vision deficiency is a very complex topic, and I could not describe the different causes any better than Wikipedia does, so if you want to learn more, you should check out their [article about color blindness](#).

Dichromacy



Original Color

58, 62.283, 15.606

Protanopia

58, 1.313, 353.602

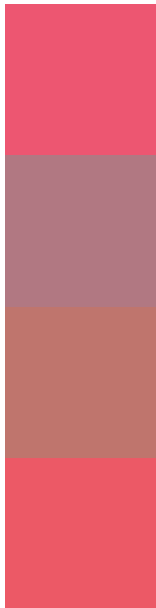
Deuteranopia

58, 20.725, 69.304



Tritanopia
58, 62.918, 25.764

Trichromacy



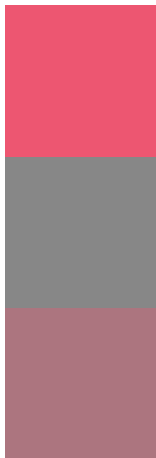
Original Color
58, 62.283, 15.606

Protanomaly
56, 24.004, 8.720

Deuteranomaly
57, 32.753, 30.769

Tritanomaly
58, 62.096, 21.994

Monochromacy



Original Color
58, 62.283, 15.606

Achromatopsia
56, 0.007, 296.813

Achromatomaly
55, 23.293, 8.192

CSS Examples

Text

The CSS property to change the color of the text to CIELCh 58, 62.283, 15.606 is called "color". The color property can be set on classes, ids or directly on the HTML element.

This example shows how text in the color `rgb(237, 86, 113)` looks like.

```
.text, #text, p{  
    color:rgb(237, 86, 113)  
}
```

If you want to add a text shadow in that color use the text-shadow property, you can generate a text shadow directly with our [CSS Text Shadow Generator](#).

Here you see how black text with a 4 pixel rgb(237, 86, 113) colored shadow looks like.

```
.shadow{ text-shadow: 4px 4px 2px rgb(237, 86, 113) }
```

Border

The CSS property to change the border of an element to CIELCh 58, 62.283, 15.606 is called "border". The border property can be set on classes, ids or directly on the HTML element.

This example shows the color as border, it can be applied via the CSS property "border" or "border-color".

```
.border, #border, table{ border:4px solid rgb(237, 86, 113) }
```

If only the border color should be changed use the property border-color.

```
.border{ border-color:rgb(237, 86, 113) }
```

If you want to add a box shadow in that color use:

Here you see how a box with a 4 pixel rgb(237, 86, 113) colored shadow looks like.

```
.boxshadow{ -moz-box-shadow:4px 4px 4px  
4px rgb(237, 86, 113); -webkit-box-  
shadow:4px 4px 4px 4px rgb(237, 86, 113);  
box-shadow:4px 4px 4px 4px rgb(237, 86,  
113) }
```

Background

The CSS property to change the background color of an element to CIELCh 58, 62.283, 15.606 is called "background". The background property can be set on classes, ids or directly on the HTML element.

```
.background, #background, body{  
background: rgb(237, 86, 113) }
```

If only the background color should be changed can be used:

```
.background{ background-color: rgb(237, 86,  
113) }
```

This example shows the color as background, it is applied via the CSS property "background".

To optimize and compress your CSS code, you can use our [online CSS compressor and optimizer](#) based on csstidy. If you want to create a linear or radial gradient as background or border, check our [CSS Gradient Generator](#).

Hey! You found this booklet interesting? Support Converting Colors with the new Membership Option!

The pro membership hides all ads, plus gives you double the colors in the color bucket, and more awesome pro features!

[Learn more, Memberships starting at \\$2.50/m!](#)

**Follow me
on Twitter!**

@ConvertingColor