

Converting Colors

CIELCh(58, 68.882, 9.477)

Have a look what the booklet for
CIELCh(58, 68.882, 9.477) contains.

CIELCh(58, 68.993, 9.341)	3
<i>Conversions</i>	4
<i>Details</i>	6
<i>Harmonies</i>	11
<i>Previews</i>	20
<i>Color Blindness Simulation</i>	23
<i>CSS Examples</i>	26

Color

CIELCh(58, 68.993, 9.341)

Conversions

Conversions Part 1

Format	Color
Hex	F64A7B
RGB	246, 74, 123
RGB Percent	96%, 29%, 48%
CMY	0.0348, 0.7093, 0.5173
CMYK	0.00, 0.70, 0.50, 0.03
HSL	343°, 91%, 63%
HSV	343°, 70%, 97%
XYZ	44.0868, 25.9610, 21.4582
YIQ	131.0140, 86.7830, 51.7030

Conversions

Conversions Part 2

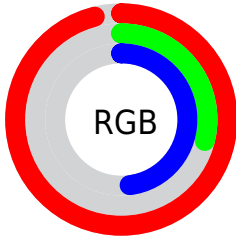
Format	Color
R_{YB}	246, 74, 123
Decimal	16140923
CIE _{Lab}	58.00, 68.08, 11.20
CIE _{LCh}	58, 68.993, 9.341
Yxy	25.9610, 0.4818, 0.2837
Android (android.graphics.Color)	4294331003 (0xFFFF64A7B)
YUV	131.0140, -3.9509, 100.8427
Hunter-Lab	50.9519, 65.2834, 10.6965

Details

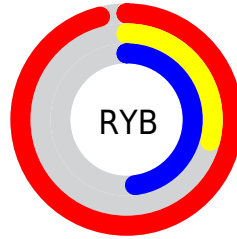
The CIELCh color **58, 68.993, 9.341** is a dark color, and the websafe version is hex **FF6699**. The color can be described as middle washed rose. A complement of this color would be **88, 55.827, 168.597**, and the grayscale version is **55, 0.007, 296.813**.

A 20% lighter version of the original color is **70, 50.711, 359.142**, and **39, 66.288, 10.914** is the 20% darker color. If you saturate the color by 10%, you get **55, 76.245, 13.211**, and if you desaturate by 10%, it is **62, 60.298, 6.292**.

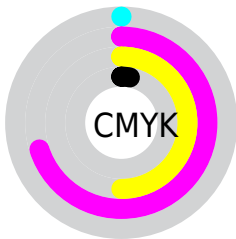
Distribution



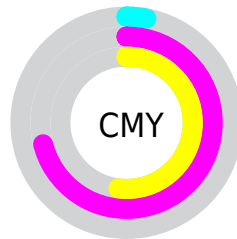
- Red (96%)
- Green (29%)
- Blue (48%)



- Red (96%)
- Yellow (29%)
- Blue (48%)



- Cyan (0%)
- Magenta (70%)
- Yellow (50%)
- Black (3%)




- Cyan (3%)
- Magenta (71%)
- Yellow (52%)

Brightness & Saturation Gradients

These gradients show how the CIELCh color 58, 68.993, 9.341 changes by changing the brightness by 10 percent. The first figure shows a shift by +10% for each color and the second figure -10%.


Similar to the brightness gradients but the following saturation gradients show a change of the CIELCh color 58, 68.993, 9.341 by changing the saturation by 10% instead.

 58, 68.993, 9.341  58, 68.993, 9.341

 100, 68.993, 9.341  48, 68.993, 9.341

 78, 68.993, 9.341  38, 68.993, 9.341

 88, 68.993, 9.341  28, 68.993, 9.341

 98, 68.993, 9.341  18, 68.993, 9.341

 8, 68.993, 9.341

 0, 68.993, 9.341

 58, 68.993, 9.341  58, 68.993, 9.341

 55, 76.245, 13.211  62, 60.298, 6.292

 53, 81.942, 18.009  67, 50.574, 3.884

52, 86.546, 23.538

72, 40.286, 1.958

52, 86.603, 23.603

78, 29.837, 0.383

84, 19.516,
359.066

91, 9.503, 357.923

97, 0.108, 182.273

99, 3.072, 199.426

Harmonies

Complementary

The Complementary color scheme is a pair of colors which are on the opposite of each other on the color wheel.



58, 68.993, 9.341



88, 55.827, 168.597

Rectangle

The Rectangle color scheme consists of four colors that form a rectangle on the color wheel.



58, 68.993, 9.341



58, 68.993, 59.341



58, 68.993, 189.341



58, 68.993, 239.341

Sweetspot

The Sweet Spot groups the original color and five complimentary colors.



58, 68.989, 9.343



86, 21.263, 359.208



55, 97.096, 318.255



44, 14.464, 359.558



0, 0.000, 0.000



53, 0.007, 296.813

Same Dimension

The Same Dimension uses a secret algorithm to generate beautiful new colors.



58, 68.989, 9.343



56, 81.011, 15.148



62, 67.544, 41.425



48, 5.438, 357.880



39, 69.762, 22.513



9, 29.714, 12.168

Inverse Universe

The Inverse Universe completely reimagines the original color for something new.



58, 68.989, 9.343



56, 81.011, 15.148



79, 38.005, 226.597



48, 5.438, 357.880



39, 69.762, 22.513



9, 29.714, 12.168

Previews

White Background



This preview shows how the CIELCh color 58, 68.993, 9.341 looks on a white background.

Color Contrast Check

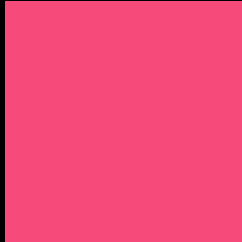
Large Text (above 18pt) WCAG AA ✓ Pass

Any Text WCAG AA ✗ Fail

Large Text (above 18pt) WCAG AAA ✗ Fail

Any Text WCAG AAA ✗ Fail

Black Background



This preview shows how the CIELCh color 58, 68.993, 9.341 looks on a black background.

Color Contrast Check

Large Text (above 18pt) WCAG AA ✓ Pass

Any Text WCAG AA ✓ Pass

Large Text (above 18pt) WCAG AAA ✓ Pass

Any Text WCAG AAA × Fail

If you want to check with other color combinations, try the [Color Contrast Checker](#).

CIELCh 58, 68.993, 9.341

Background



This preview shows how black text looks on a background with the CIELCh color 58, 68.993, 9.341.



This preview shows how white text looks on a background with the CIELCh color 58, 68.993, 9.341.

Color Blindness Simulation

Color vision deficiency is a very complex topic, and I could not describe the different causes any better than Wikipedia does, so if you want to learn more, you should check out their [article about color blindness](#).

Dichromacy



Original Color

58, 68.993, 9.341

Protanopia

58, 10.812, 287.519

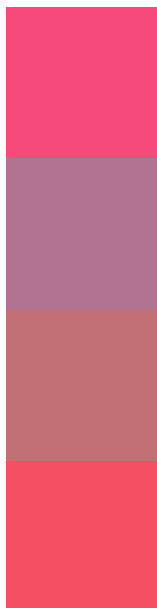
Deuteranopia

58, 16.187, 61.498



Tritanopia
58, 69.889, 27.430

Trichromacy



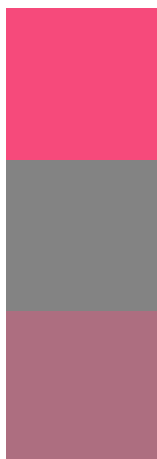
Original Color
58, 68.993, 9.341

Protanomaly
56, 29.480, 347.914

Deuteranomaly
56, 34.350, 18.082

Tritanomaly
58, 68.856, 21.001

Monochromacy



Original Color
58, 68.993, 9.341

Achromatopsia
55, 0.007, 296.813

Achromatomaly
54, 27.516, 1.175

CSS Examples

Text

The CSS property to change the color of the text to CIELCh 58, 68.993, 9.341 is called "color". The color property can be set on classes, ids or directly on the HTML element.

This example shows how text in the color `rgb(246, 74, 123)` looks like.

```
.text, #text, p{  
    color:rgb(246, 74, 123)  
}
```

If you want to add a text shadow in that color use the text-shadow property, you can generate a text shadow directly with our [CSS Text Shadow Generator](#).

Here you see how black text with a 4 pixel rgb(246, 74, 123) colored shadow looks like.

```
.shadow{ text-shadow: 4px 4px 2px rgb(246, 74, 123) }
```

Border

The CSS property to change the border of an element to CIELCh 58, 68.993, 9.341 is called "border". The border property can be set on classes, ids or directly on the HTML element.

This example shows the color as border, it can be applied via the CSS property "border" or "border-color".

```
.border, #border, table{ border:4px solid rgb(246, 74, 123) }
```

If only the border color should be changed use the property border-color.

```
.border{ border-color:rgb(246, 74, 123) }
```

If you want to add a box shadow in that color use:

Here you see how a box with a 4 pixel rgb(246, 74, 123) colored shadow looks like.

```
.boxshadow{ -moz-box-shadow:4px 4px 4px  
4px rgb(246, 74, 123); -webkit-box-  
shadow:4px 4px 4px 4px rgb(246, 74, 123);  
box-shadow:4px 4px 4px 4px rgb(246, 74,  
123) }
```

Background

The CSS property to change the background color of an element to CIELCh 58, 68.993, 9.341 is called "background". The background property can be set on classes, ids or directly on the HTML element.

```
.background, #background, body{  
background: rgb(246, 74, 123) }
```

If only the background color should be changed can be used:

```
.background{ background-color: rgb(246, 74,  
123) }
```

This example shows the color as background, it is applied via the CSS property "background".

To optimize and compress your CSS code, you can use our [online CSS compressor and optimizer](#) based on csstidy. If you want to create a linear or radial gradient as background or border, check our [CSS Gradient Generator](#).

Hey! You found this booklet interesting? Support Converting Colors with the new Membership Option!

The pro membership hides all ads, plus gives you double the colors in the color bucket, and more awesome pro features!

[Learn more, Memberships starting at \\$2.50/m!](#)

**Follow me
on Twitter!**

@ConvertingColor