

Converting Colors

CIELCh(58, 70.261, 7.857)

Have a look what the booklet for
CIELCh(58, 70.261, 7.857) contains.

CIELCh(58, 70.256, 7.950)	3
<i>Conversions</i>	4
<i>Details</i>	6
<i>Harmonies</i>	11
<i>Previews</i>	20
<i>Color Blindness Simulation</i>	23
<i>CSS Examples</i>	26

Color

CIELCh(58, 70.256, 7.950)

Conversions

Conversions Part 1

Format	Color
Hex	F8487E
RGB	248, 72, 126
RGB Percent	97%, 28%, 49%
CMY	0.0291, 0.7192, 0.5072
CMYK	0.00, 0.71, 0.49, 0.03
HSL	342°, 92%, 63%
HSV	342°, 71%, 97%
XYZ	44.6022, 25.9610, 22.2880
YIQ	130.7800, 87.5620, 54.1060

Conversions

Conversions Part 2

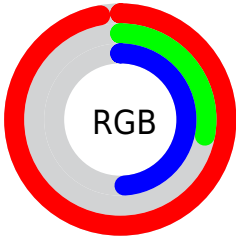
Format	Color
R_{YB}	248, 72, 126
Decimal	16271486
CIE _{Lab}	58.00, 69.58, 9.72
CIE _{LCh}	58, 70.256, 7.950
Yxy	25.9610, 0.4804, 0.2796
Android (android.graphics.Color)	4294461566 (0xFFFF8487E)
YUV	130.7800, -2.3565, 102.8019
Hunter-Lab	50.9519, 67.0893, 9.7310

Details

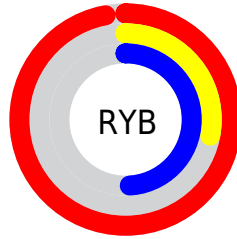
The CIELCh color **58, 70.256, 7.950** is a dark color, and the websafe version is hex **FF6699**. The color can be described as middle washed rose. A complement of this color would be **88, 58.044, 166.701**, and the grayscale version is **55, 0.007, 296.813**.

A 20% lighter version of the original color is **70, 51.630, 357.118**, and **40, 66.768, 10.339** is the 20% darker color. If you saturate the color by 10%, you get **55, 77.089, 11.837**, and if you desaturate by 10%, it is **62, 61.847, 4.890**.

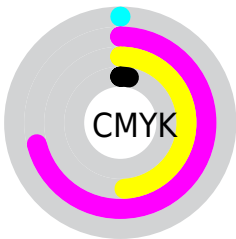
Distribution



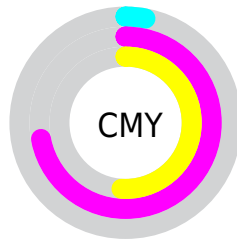
- Red (97%)
- Green (28%)
- Blue (49%)



- Red (97%)
- Yellow (28%)
- Blue (49%)



- Cyan (0%)
- Magenta (71%)
- Yellow (49%)
- Black (3%)



- Cyan (3%)
- Magenta (72%)
- Yellow (51%)

Brightness & Saturation Gradients

These gradients show how the CIELCh color 58, 70.256, 7.950 changes by changing the brightness by 10 percent. The first figure shows a shift by +10% for each color and the second figure -10%.

Similar to the brightness gradients but the following saturation gradients show a change of the CIELCh color 58, 70.256, 7.950 by changing the saturation by 10% instead.

 58, 70.256, 7.950  58, 70.256, 7.950

 100, 70.256, 7.950  48, 70.256, 7.950

 78, 70.256, 7.950  38, 70.256, 7.950

 88, 70.256, 7.950  28, 70.256, 7.950

 98, 70.256, 7.950  18, 70.256, 7.950

 8, 70.256, 7.950

 0, 70.256, 7.950

 58, 70.256, 7.950  58, 70.256, 7.950

 55, 77.089, 11.837  62, 61.847, 4.890

 53, 82.274, 16.664  67, 52.271, 2.474

52, 85.974, 21.595

72, 42.011, 0.539

78, 31.498,
358.956

84, 21.046,
357.630

90, 10.858,
356.482

97, 1.044, 355.025

99, 2.567, 199.501

Harmonies

Complementary

The Complementary color scheme is a pair of colors which are on the opposite of each other on the color wheel.



58, 70.256, 7.950



88, 58.044, 166.701

Rectangle

The Rectangle color scheme consists of four colors that form a rectangle on the color wheel.



58, 70.256, 7.950



58, 70.256, 57.950



58, 70.256, 187.950



58, 70.256, 237.950

Sweetspot

The Sweet Spot groups the original color and five complimentary colors.



58, 70.252, 7.952



86, 21.468, 357.624



55, 98.873, 317.753



44, 14.598, 357.969



0, 0.000, 0.000



53, 0.007, 296.813

Same Dimension

The Same Dimension uses a secret algorithm to generate beautiful new colors.



58, 70.252, 7.952



56, 81.170, 13.677



62, 69.916, 40.468



49, 5.593, 356.310



40, 69.719, 20.546



9, 30.551, 11.541

Inverse Universe

The Inverse Universe completely reimagines the original color for something new.



58, 70.252, 7.952



56, 81.170, 13.677



80, 38.606, 224.012



49, 5.593, 356.310



40, 69.719, 20.546



9, 30.551, 11.541

Previews

White Background



This preview shows how the CIELCh color 58, 70.256, 7.950 looks on a white background.

Color Contrast Check

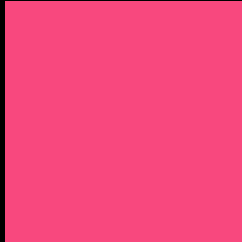
Large Text (above 18pt) WCAG AA ✓ Pass

Any Text WCAG AA ✗ Fail

Large Text (above 18pt) WCAG AAA ✗ Fail

Any Text WCAG AAA ✗ Fail

Black Background



This preview shows how the CIELCh color 58, 70.256, 7.950 looks on a black background.

Color Contrast Check

Large Text (above 18pt) WCAG AA ✓ Pass

Any Text WCAG AA ✓ Pass

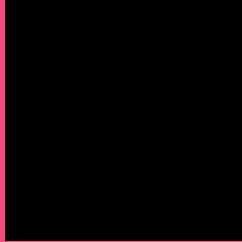
Large Text (above 18pt) WCAG AAA ✓ Pass

Any Text WCAG AAA × Fail

If you want to check with other color combinations, try the [Color Contrast Checker](#).

CIELCh 58, 70.256, 7.950

Background



This preview shows how black text looks on a background with the CIELCh color 58, 70.256, 7.950.



This preview shows how white text looks on a background with the CIELCh color 58, 70.256, 7.950.

Color Blindness Simulation

Color vision deficiency is a very complex topic, and I could not describe the different causes any better than Wikipedia does, so if you want to learn more, you should check out their [article about color blindness](#).

Dichromacy



Original Color

58, 70.256, 7.950

Protanopia

58, 13.123, 285.341

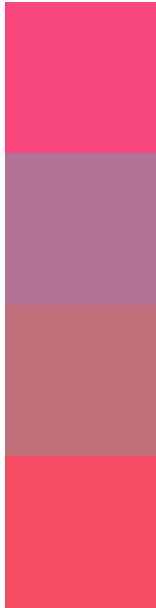
Deuteranopia

58, 15.056, 59.649



Tritanopia
58, 70.960, 28.053

Trichromacy



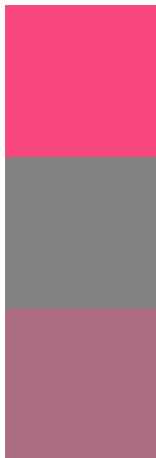
Original Color
58, 70.256, 7.950

Protanomaly
56, 30.969, 343.405

Deuteranomaly
56, 34.270, 15.314

Tritanomaly
58, 69.517, 20.861

Monochromacy



Original Color
58, 70.256, 7.950

Achromatopsia
54, 0.007, 296.813

Achromatomaly
53, 28.069, 0.463

CSS Examples

Text

The CSS property to change the color of the text to CIELCh 58, 70.256, 7.950 is called "color". The color property can be set on classes, ids or directly on the HTML element.

This example shows how text in the color `rgb(248, 72, 126)` looks like.

```
.text, #text, p{  
    color:rgb(248, 72, 126)  
}
```

If you want to add a text shadow in that color use the text-shadow property, you can generate a text shadow directly with our [CSS Text Shadow Generator](#).

Here you see how black text with a 4 pixel rgb(248, 72, 126) colored shadow looks like.

```
.shadow{ text-shadow: 4px 4px 2px rgb(248, 72, 126) }
```

Border

The CSS property to change the border of an element to CIELCh 58, 70.256, 7.950 is called "border". The border property can be set on classes, ids or directly on the HTML element.

This example shows the color as border, it can be applied via the CSS property "border" or "border-color".

```
.border, #border, table{ border:4px solid rgb(248, 72, 126) }
```

If only the border color should be changed use the property border-color.

```
.border{ border-color:rgb(248, 72, 126) }
```

If you want to add a box shadow in that color use:

Here you see how a box with a 4 pixel rgb(248, 72, 126) colored shadow looks like.

```
.boxshadow{ -moz-box-shadow:4px 4px 4px  
4px rgb(248, 72, 126); -webkit-box-  
shadow:4px 4px 4px 4px rgb(248, 72, 126);  
box-shadow:4px 4px 4px 4px rgb(248, 72,  
126) }
```

Background

The CSS property to change the background color of an element to CIELCh 58, 70.256, 7.950 is called "background". The background property can be set on classes, ids or directly on the HTML element.

```
.background, #background, body{  
background: rgb(248, 72, 126) }
```

If only the background color should be changed can be used:

```
.background{ background-color: rgb(248, 72,  
126) }
```

This example shows the color as background, it is applied via the CSS property "background".

To optimize and compress your CSS code, you can use our [online CSS compressor and optimizer](#) based on csstidy. If you want to create a linear or radial gradient as background or border, check our [CSS Gradient Generator](#).

Hey! You found this booklet interesting? Support Converting Colors with the new Membership Option!

The pro membership hides all ads, plus gives you double the colors in the color bucket, and more awesome pro features!

[Learn more, Memberships starting at \\$2.50/m!](#)

**Follow me
on Twitter!**

@ConvertingColor