

Converting Colors

CIELCh(58, 72.216, 2.218)

Have a look what the booklet for
CIELCh(58, 72.216, 2.218) contains.

CIELCh(58, 72.183, 2.568)	3
<i>Conversions</i>	4
<i>Details</i>	6
<i>Harmonies</i>	11
<i>Previews</i>	20
<i>Color Blindness Simulation</i>	23
<i>CSS Examples</i>	26

Color

CIELCh(58, 72.183, 2.568)

Conversions

Conversions Part 1

Format	Color
Hex	F94489
RGB	249, 68, 137
RGB Percent	98%, 27%, 54%
CMY	0.0249, 0.7348, 0.4639
CMYK	0.00, 0.73, 0.45, 0.02
HSL	337°, 93%, 62%
HSV	337°, 73%, 98%
XYZ	45.4791, 25.9610, 26.1715
YIQ	129.9850, 85.7270, 59.8310

Conversions

Conversions Part 2

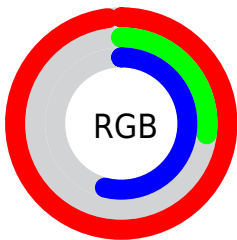
Format	Color
R _{YB}	249, 68, 137
Decimal	16336009
CIE Lab	58.00, 72.11, 3.23
CIE LCh	58, 72.183, 2.568
Yxy	25.9610, 0.4659, 0.2660
Android (android.graphics.Color)	4294526089 (0xFFFF94489)
YUV	129.9850, 3.4584, 104.3762
Hunter-Lab	50.9519, 70.1612, 5.2120

Details

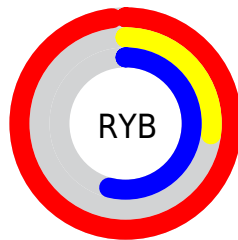
The CIELCh color **58, 72.183, 2.568** is a light color, and the websafe version is hex **FF6699**. The color can be described as light washed rose. A complement of this color would be **88, 63.840, 161.304**, and the grayscale version is **54, 0.007, 296.813**.

A 20% lighter version of the original color is **70, 55.401, 350.000**, and **40, 66.906, 4.860** is the 20% darker color. If you saturate the color by 10%, you get **55, 77.970, 6.203**, and if you desaturate by 10%, it is **62, 64.477, 359.714**.

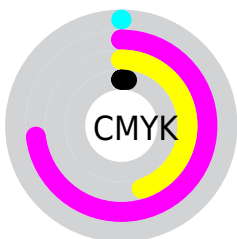
Distribution



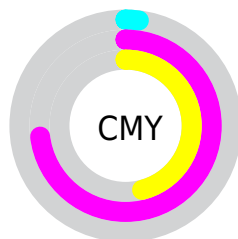
- Red (98%)
- Green (27%)
- Blue (54%)



- Red (98%)
- Yellow (27%)
- Blue (54%)



- Cyan (0%)
- Magenta (73%)
- Yellow (45%)
- Black (2%)



- Cyan (2%)
- Magenta (73%)
- Yellow (46%)

Brightness & Saturation Gradients

These gradients show how the CIELCh color 58, 72.183, 2.568 changes by changing the brightness by 10 percent. The first figure shows a shift by +10% for each color and the second figure -10%.

Similar to the brightness gradients but the following saturation gradients show a change of the CIELCh color 58, 72.183, 2.568 by changing the saturation by 10% instead.

 58, 72.183, 2.568

 58, 72.183, 2.568

 100, 72.183, 2.568

 48, 72.183, 2.568

 78, 72.183, 2.568

 38, 72.183, 2.568

 88, 72.183, 2.568

 28, 72.183, 2.568

 98, 72.183, 2.568

 18, 72.183, 2.568


 8, 72.183, 2.568

 0, 72.183, 2.568

 58, 72.183, 2.568

 58, 72.183, 2.568

 55, 77.970, 6.203

 62, 64.477,
359.714

 54, 81.795, 10.769

53, 83.762, 14.548

66, 55.277,
357.454

71, 45.114,
355.630

77, 34.476,
354.123

83, 23.732,
352.846

90, 13.133,
351.732

96, 2.827, 350.624

100, 2.204,
199.566

Harmonies

Complementary

The Complementary color scheme is a pair of colors which are on the opposite of each other on the color wheel.



58, 72.183, 2.568



88, 63.840, 161.304

Rectangle

The Rectangle color scheme consists of four colors that form a rectangle on the color wheel.



58, 72.183, 2.568



58, 72.183, 52.568



58, 72.183, 182.568



58, 72.183, 232.568

Sweetspot

The Sweet Spot groups the original color and five complimentary colors.



58, 72.179, 2.569



86, 23.352, 352.755



52, 101.268, 315.777



44, 15.742, 353.080



0, 0.000, 0.000



53, 0.007, 296.813

Same Dimension

The Same Dimension uses a secret algorithm to generate beautiful new colors.



58, 72.179, 2.569



56, 81.389, 8.055



60, 74.859, 36.874



49, 5.826, 351.387



40, 67.901, 13.538



9, 30.460, 5.949

Inverse Universe

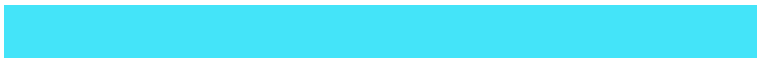
The Inverse Universe completely reimagines the original color for something new.



58, 72.179, 2.569



56, 81.389, 8.055



84, 40.380, 213.199



49, 5.826, 351.387



40, 67.901, 13.538



9, 30.460, 5.949

Previews

White Background



This preview shows how the CIELCh color 58, 72.183, 2.568 looks on a white background.

Color Contrast Check

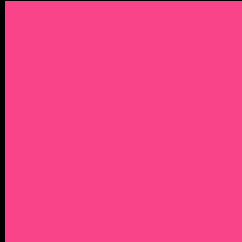
Large Text (above 18pt) WCAG AA ✓ Pass

Any Text WCAG AA ✗ Fail

Large Text (above 18pt) WCAG AAA ✗ Fail

Any Text WCAG AAA ✗ Fail

Black Background



This preview shows how the CIELCh color 58, 72.183, 2.568 looks on a black background.

Color Contrast Check

Large Text (above 18pt) WCAG AA ✓ Pass

Any Text WCAG AA ✓ Pass

Large Text (above 18pt) WCAG AAA ✓ Pass

Any Text WCAG AAA × Fail

If you want to check with other color combinations, try the [Color Contrast Checker](#).

CIELCh 58, 72.183, 2.568

Background



This preview shows how black text looks on a background with the CIELCh color 58, 72.183, 2.568.

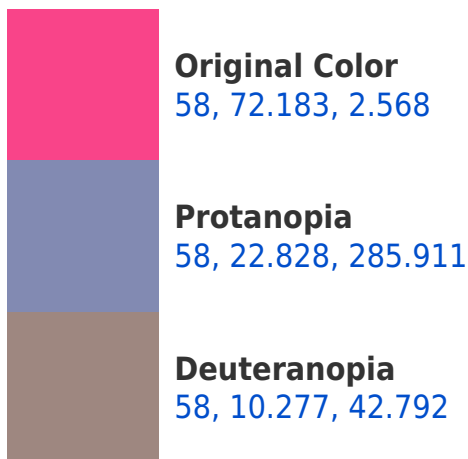


This preview shows how white text looks on a background with the CIELCh color 58, 72.183, 2.568.

Color Blindness Simulation

Color vision deficiency is a very complex topic, and I could not describe the different causes any better than Wikipedia does, so if you want to learn more, you should check out their [article about color blindness](#).

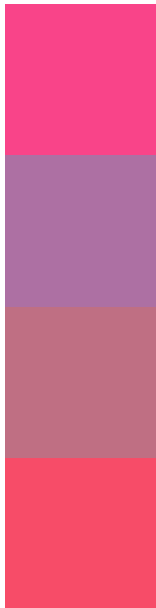
Dichromacy





Tritanopia
58, 71.610, 27.845

Trichromacy



Original Color
58, 72.183, 2.568

Protanomaly
55, 36.648, 331.463

Deuteranomaly
56, 34.192, 4.751

Tritanomaly
58, 69.947, 18.700

Monochromacy



Original Color
58, 72.183, 2.568

Achromatopsia
54, 0.007, 296.813

Achromatomaly
53, 29.893, 354.954

CSS Examples

Text

The CSS property to change the color of the text to CIELCh 58, 72.183, 2.568 is called "color". The color property can be set on classes, ids or directly on the HTML element.

This example shows how text in the color `rgb(249, 68, 137)` looks like.

```
.text, #text, p{  
    color:rgb(249, 68, 137)  
}
```

If you want to add a text shadow in that color use the text-shadow property, you can generate a text shadow directly with our [CSS Text Shadow Generator](#).

Here you see how black text with a 4 pixel rgb(249, 68, 137) colored shadow looks like.

```
.shadow{ text-shadow: 4px 4px 2px rgb(249, 68, 137) }
```

Border

The CSS property to change the border of an element to CIELCh 58, 72.183, 2.568 is called "border". The border property can be set on classes, ids or directly on the HTML element.

This example shows the color as border, it can be applied via the CSS property "border" or "border-color".

```
.border, #border, table{ border:4px solid rgb(249, 68, 137) }
```

If only the border color should be changed use the property `border-color`.

```
.border{ border-color:rgb(249, 68, 137) }
```

If you want to add a box shadow in that color use:

Here you see how a box with a 4 pixel `rgb(249, 68, 137)` colored shadow looks like.

```
.boxshadow{ -moz-box-shadow:4px 4px 4px  
4px rgb(249, 68, 137); -webkit-box-  
shadow:4px 4px 4px 4px rgb(249, 68, 137);  
box-shadow:4px 4px 4px 4px rgb(249, 68,  
137) }
```

Background

The CSS property to change the background color of an element to CIELCh 58, 72.183, 2.568 is called "background". The background property can be set on classes, ids or directly on the HTML element.

```
.background, #background, body{  
background: rgb(249, 68, 137) }
```

If only the background color should be changed can be used:

```
.background{ background-color: rgb(249, 68,  
137) }
```

This example shows the color as background, it is applied via the CSS property "background".

To optimize and compress your CSS code, you can use our [online CSS compressor and optimizer](#) based on csstidy. If you want to create a linear or radial gradient as background or border, check our [CSS Gradient Generator](#).

Hey! You found this booklet interesting? Support Converting Colors with the new Membership Option!

The pro membership hides all ads, plus gives you double the colors in the color bucket, and more awesome pro features!

[Learn more, Memberships starting at \\$2.50/m!](#)

**Follow me
on Twitter!**

@ConvertingColor